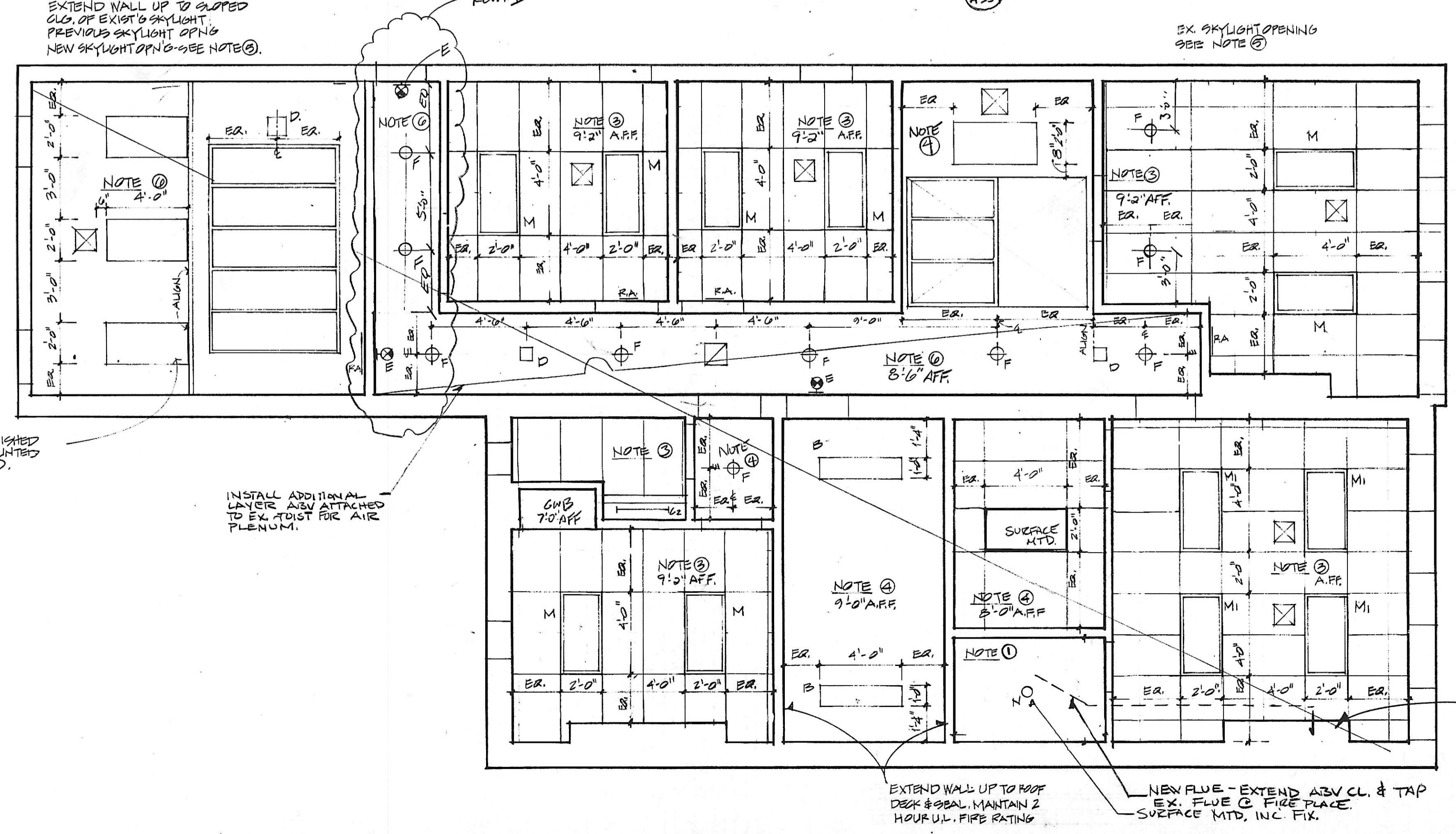


1 SECOND FLOOR REFLECTED CL. PLAN



2 THIRD FLOOR REFLECTED CL. PLAN

- CEILING NOTATION**
- NOTE #1
RATED GWB CEILING**
Maintain 1-hour rating UL design #1501 attach 5/8" type "X" GWB directly to existing joist. Shim as required to remain flat. Duct or lighting penetrations require fire dampers for ducts and tenting for fixtures.
- NOTE #2
RATED, SUSPENDED GWB CEILING**
Maintain UL design for suspended GWB ceiling. Suspend rated metal framing and attach 5/8" GWB type "X". Duct penetrations require fire dampers and lighting penetrations require tenting.
- NOTE #3
UNRATED LAY-IN CEILING**
Install lay-in ceiling - 2'x'4'
See specification.
- NOTE #4
UNRATED - SUSPENDED GWB CEILING**
Install suspended GWB ceiling. No fire rating required. Install 1/2" GWB to metal hat section and black iron.
- NOTE #5
EXISTING SKYLIGHT AND MONITOR**
Existing skylight to remain. Remove existing wall board. Insulate throat and sloped ceiling with R-19 batt insulation with vapor barrier. Install 1/2" GWB, furr as required. Check skylight for leakage, see roof plan for additional notation.
- NOTE #6
GWB CEILING**
Attach 1/2" GWB with foil back vapor barrier directly to existing framing. Add framing as required. Shim or use furring. Channel to maintain level condition.
- NOTE #7
INSULATION**
Install continuous layer of fiberglass batt insulation R-30 to entire roof area. Maintain tight butted condition throughout. DUCT WK TO PASS UNDER INSULATION ON WARM SIDE TYP.
- NOTE #8
EXISTING PLASTER CEILING**
Patch and repair existing plaster and wood lath ceiling. Salvage center medallion and existing moldings. Clean, scale, prime and paint. All wiring to be fished thru joist.

GENERAL NOTES

- Maintain fire rating for 1-hour fire separation between the basement and first floor.
- Install all ceilings at elevations shown. Extend ductwork and fixtures up between joist to maintain levels shown. Variations from locations indicated due to existing framing must be verified with the architect.
- All surfaces to be painted excluding lay-in ceilings.

NO.	DATE	DESCRIPTION
1	10-30-89	REV FOR PERMIT

REVISIONS	

Cho Wilks & Benn
218 West Saratoga Street
Baltimore, Maryland 21201
(301) 576-0440
ARCHITECTS

MARYLAND institute

DRAWN BY: JAM CHECKED BY:

**Reflected Ceiling Plan
ALTERNATE #2
Second & Third Floors**

PROJECT NO: 1712 SHEET NO:
SCALE: 1/4" = 1'-0"
DATE: 8-11-89
LATEST REV: 10-30-89

ALTERNATE #2