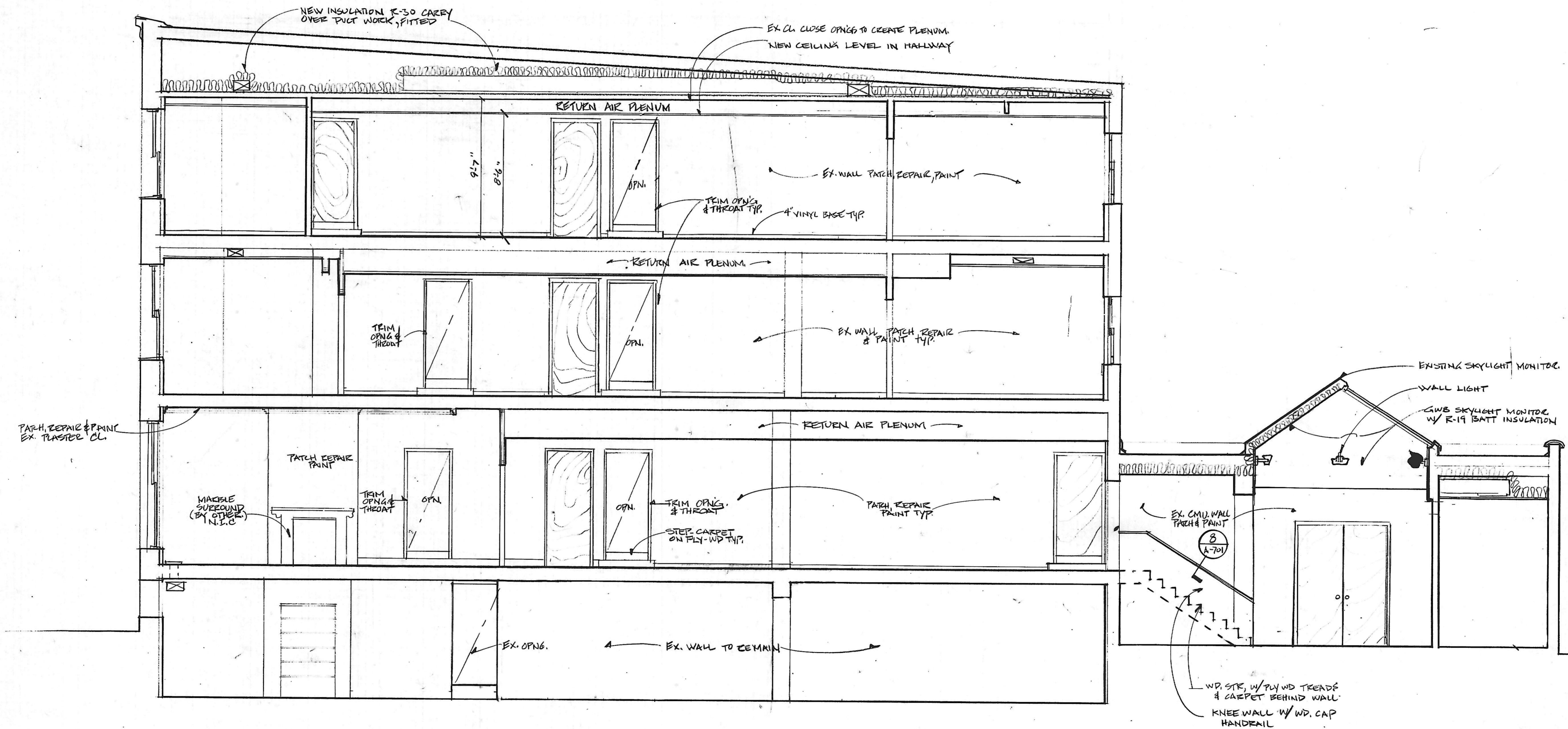


GENERAL NOTES

① MAINTAIN MAX. CEILING HEIGHTS FOR DUCT WORK BTW EX. FRAMING



① Longitudinal Section West

A-502
502

NO.	DATE	DESCRIPTION

NO.	DATE	DESCRIPTION

Cho Wilks & Benn
316 North Charles Street
Baltimore, Maryland 21201
(301) 576-0440
ARCHITECTS

MARYLAND
institute

DRAWN BY: JCM CHECKED BY:

Longitudinal Section
- West
Contract Dwg.

PROJECT NO.: 1110 SHEET NO.:

SCALE: 1/4" = 1'-0"

DATE: 8-11-89

LATEST REV.: 8-11-89

A-502