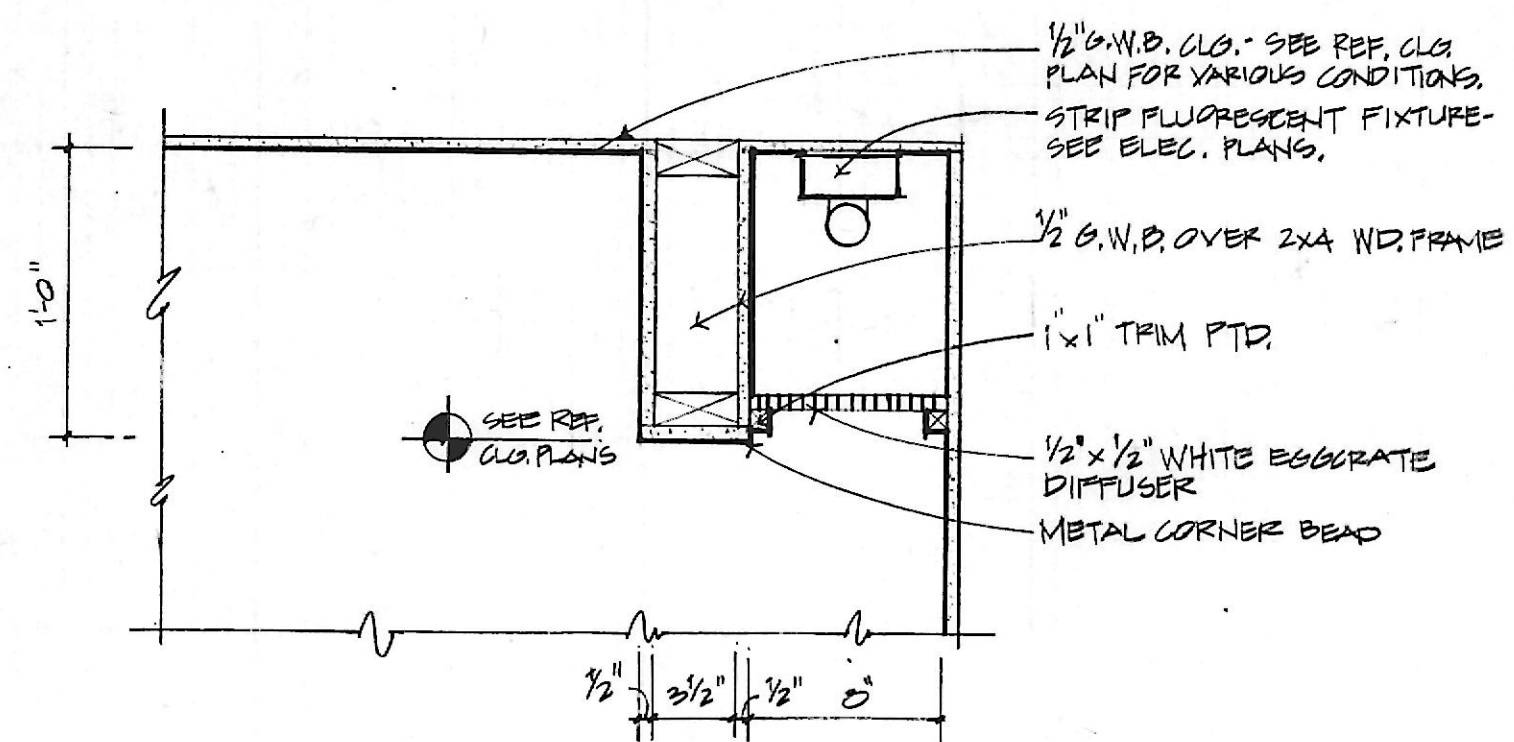
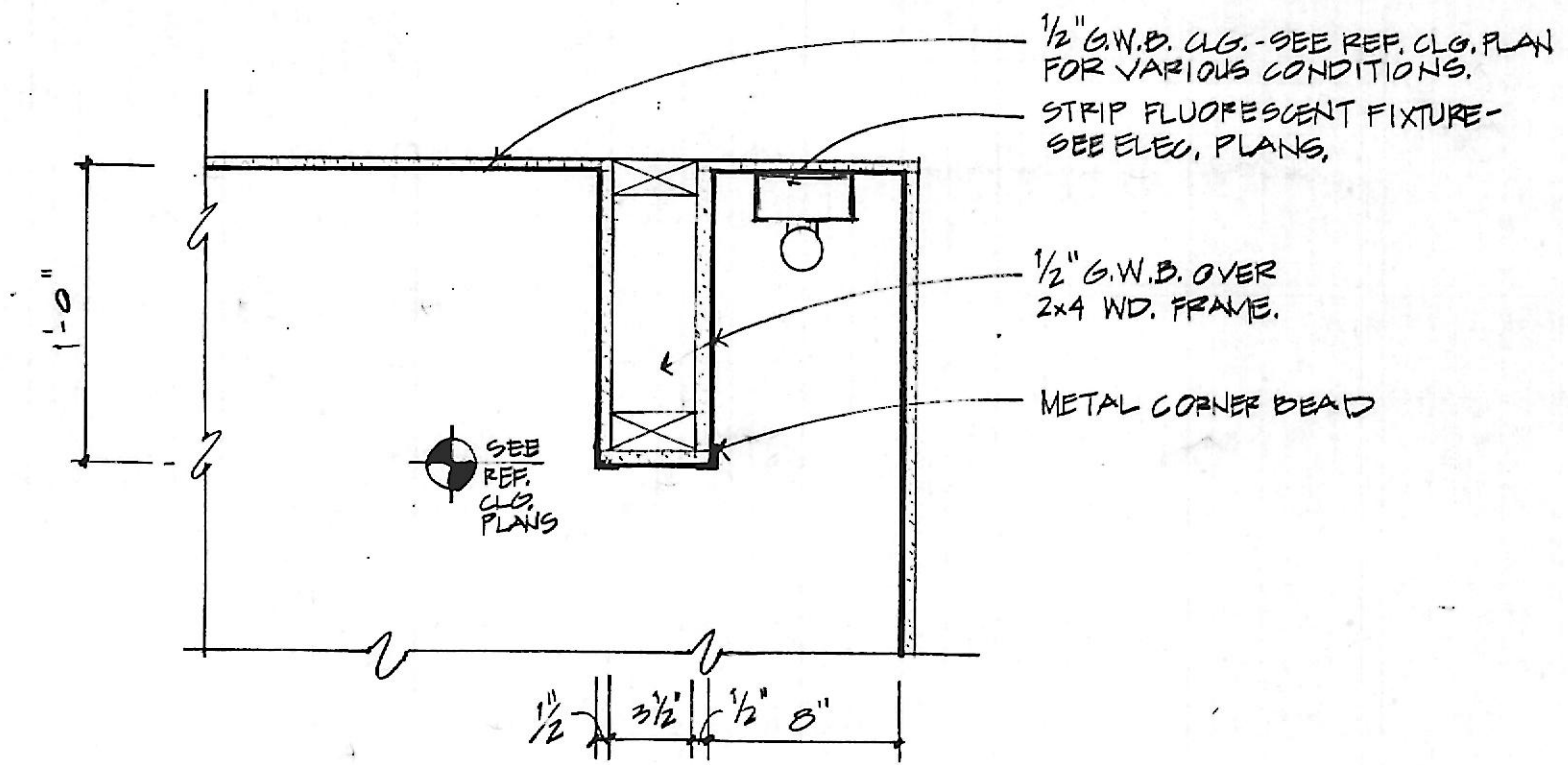


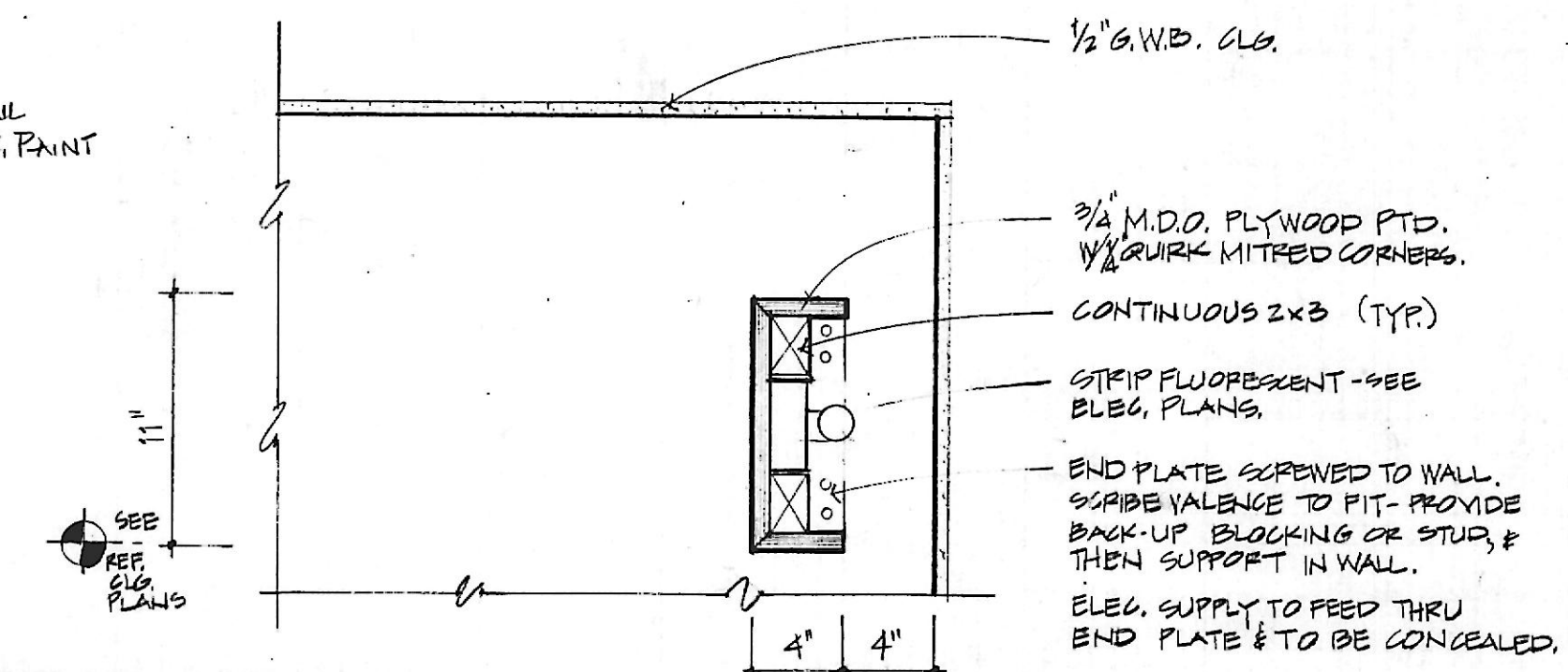
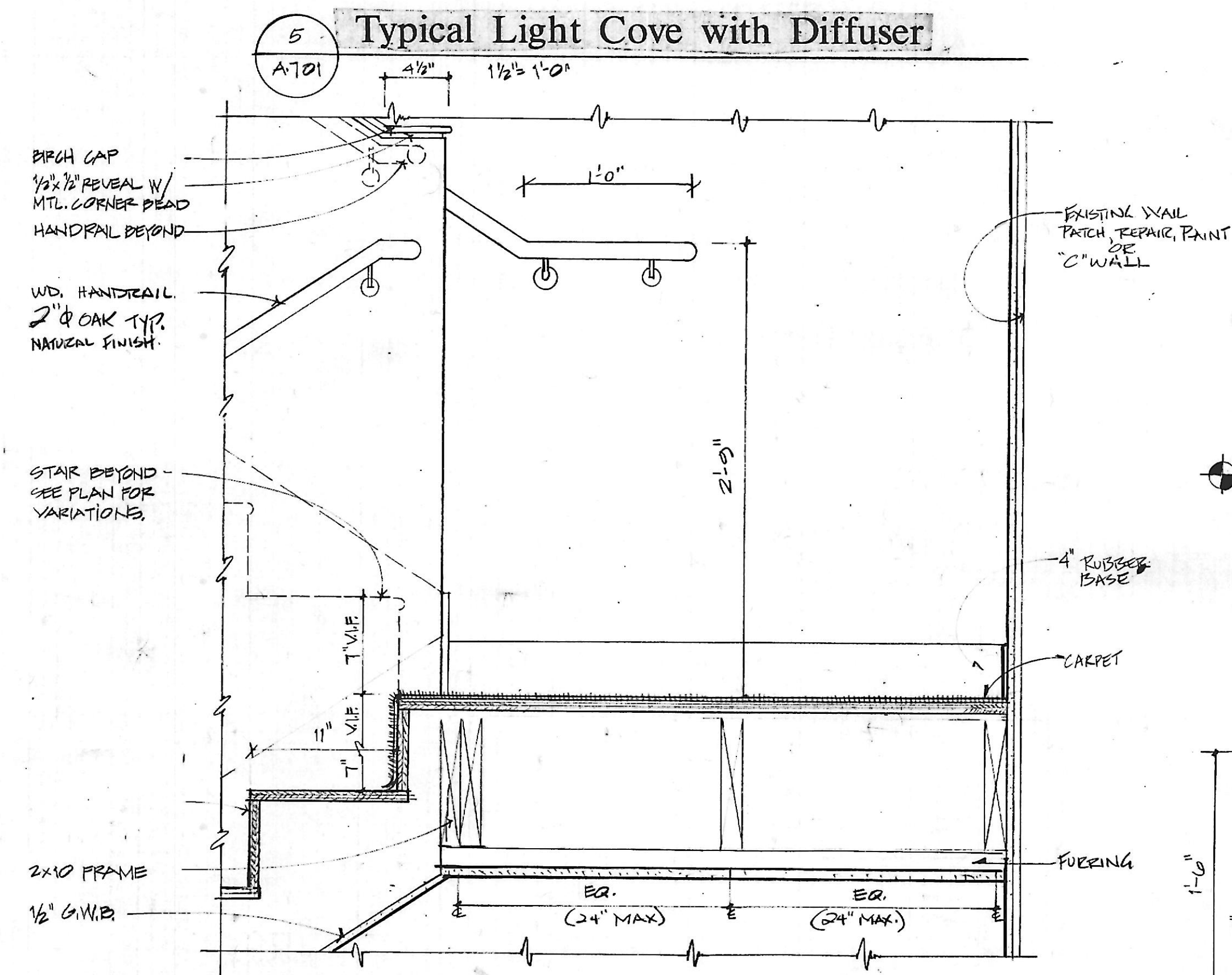
8 Section thru Stair Partition  
A-701 FULL SCALE



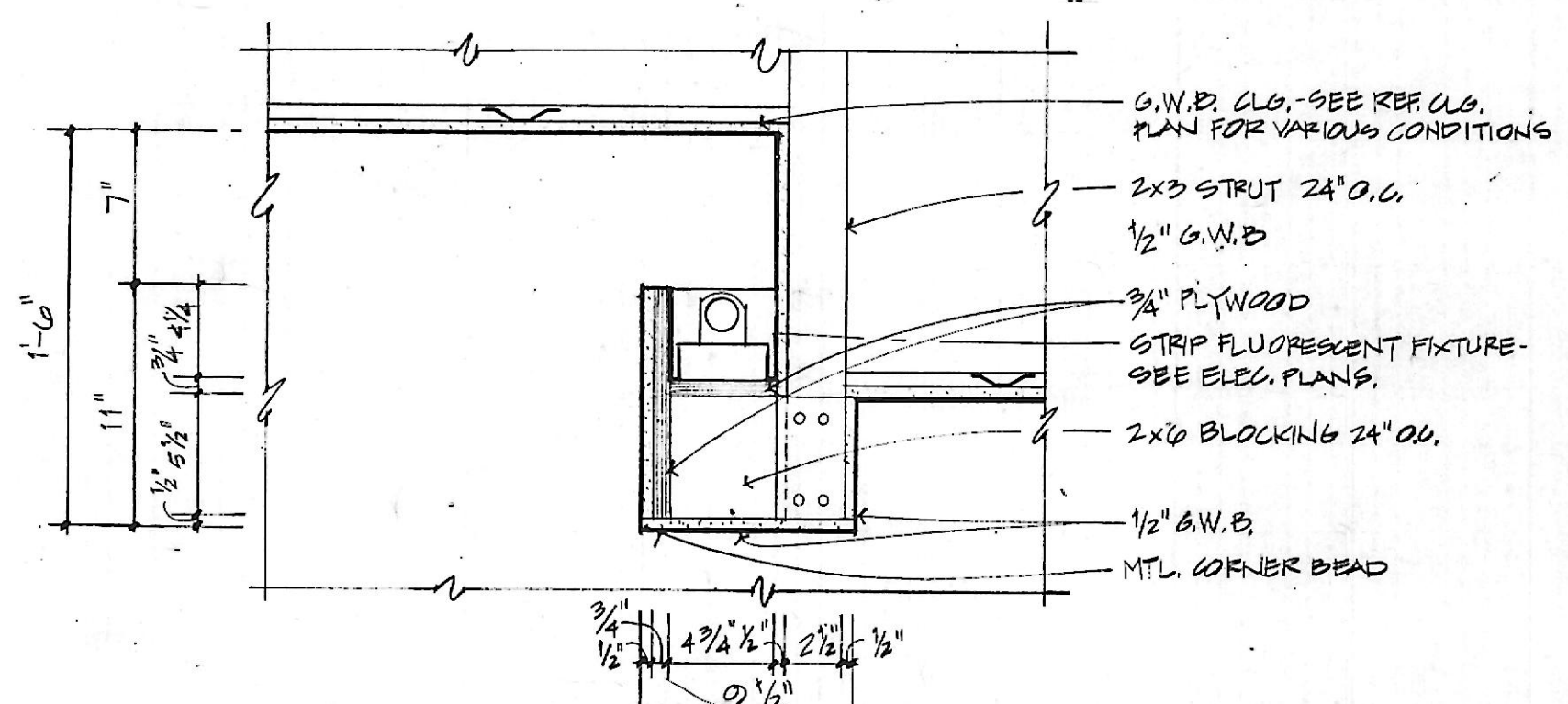
5 Typical Light Cove with Diffuser  
A-701 1/2" = 1'-0"



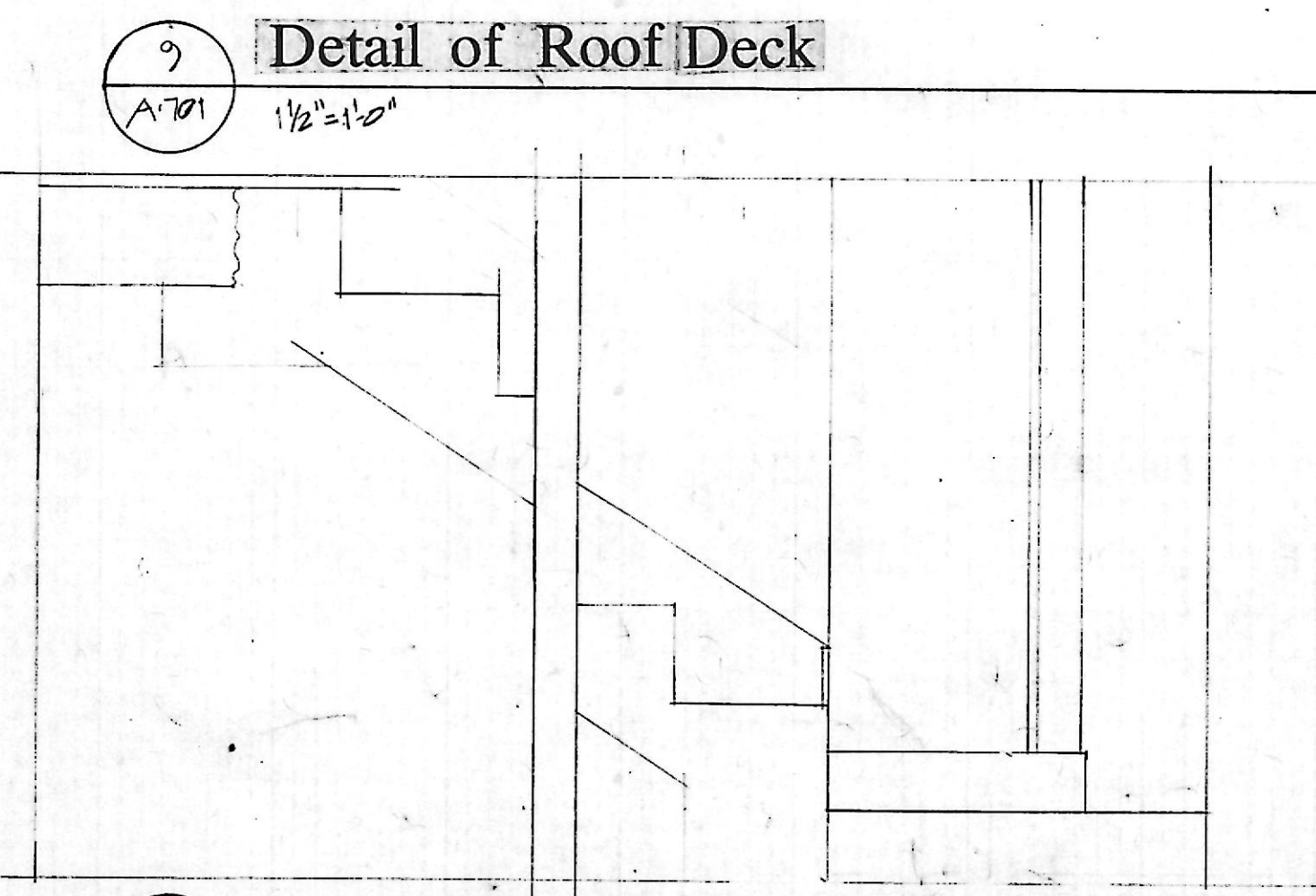
1 Section thru Typical Light Cove  
A-701 1/2" = 1'-0"



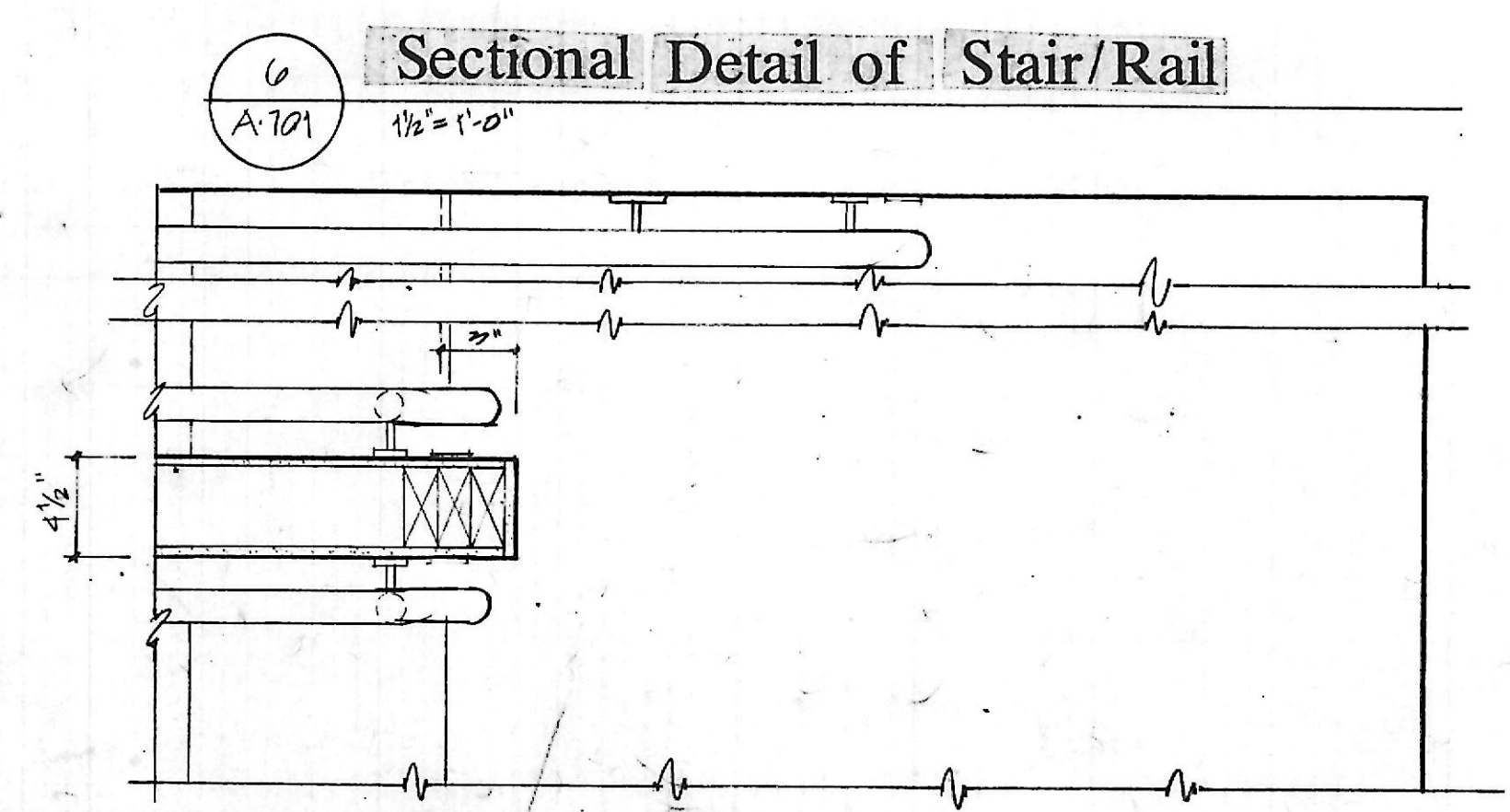
2 Detail of Typical Fluorescent Valence  
A-701 1/2" = 1'-0"



3 Detail of Beam/Cove  
A-701 1/2" = 1'-0"

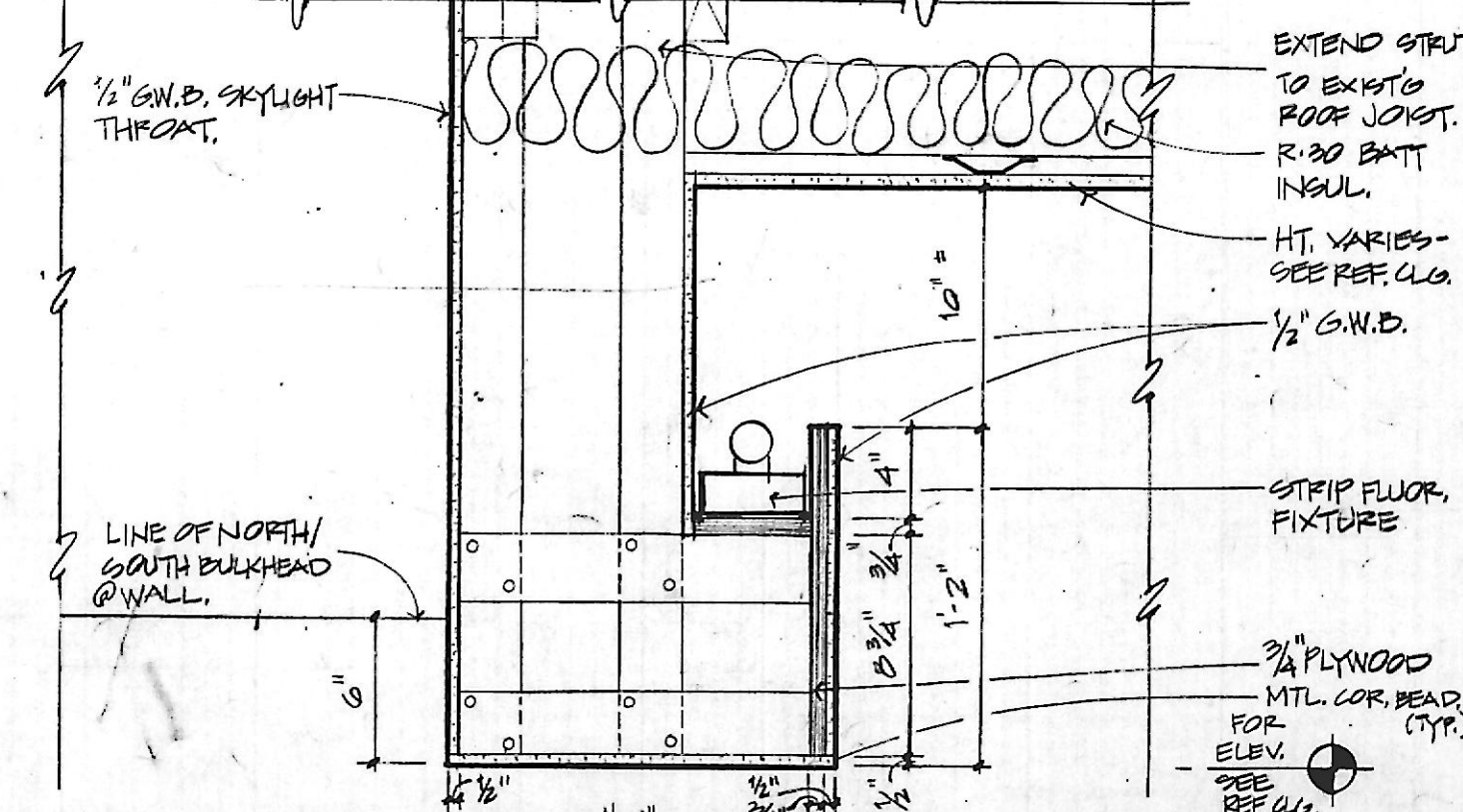


9 Detail of Roof Deck  
A-701 1/2" = 1'-0"



6 Sectional Detail of Stair/Rail  
A-701 1/2" = 1'-0"

7 Plan Detail of Rail  
A-701 1/2" = 1'-0"



4 Detail - Beam / Cove  
A-701 1/2" = 1'-0"

NO	DATE	DESCRIPTION
REVISIONS		

**Cho Wilks & Benn**  
316 North Charles Street  
Baltimore, Maryland 21201  
(301) 576-0440  
ARCHITECTS

**MARYLAND institute**

DRAWN BY: JCM CHECKED BY:

**DETAILS**  
Contract Dwg.

PROJECT NO: 1712 SHEET NO:  
SCALE: AS NOTED **A-701**  
DATE: 8-11-89  
LATEST REV: 8-11-89