

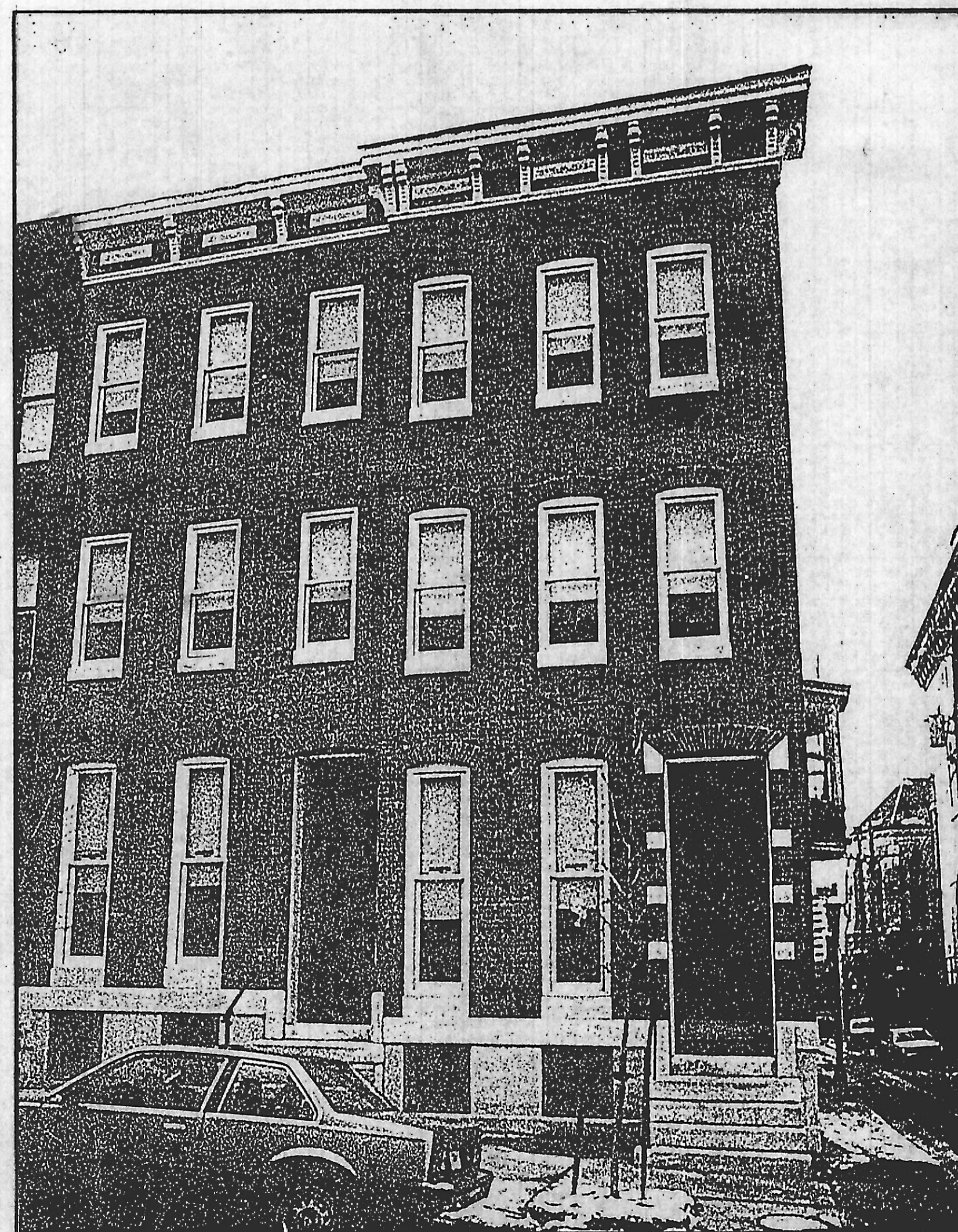
MARYLAND INSTITUTE College of Art administrative offices

Architect
Mechanical·Electrical
Structural

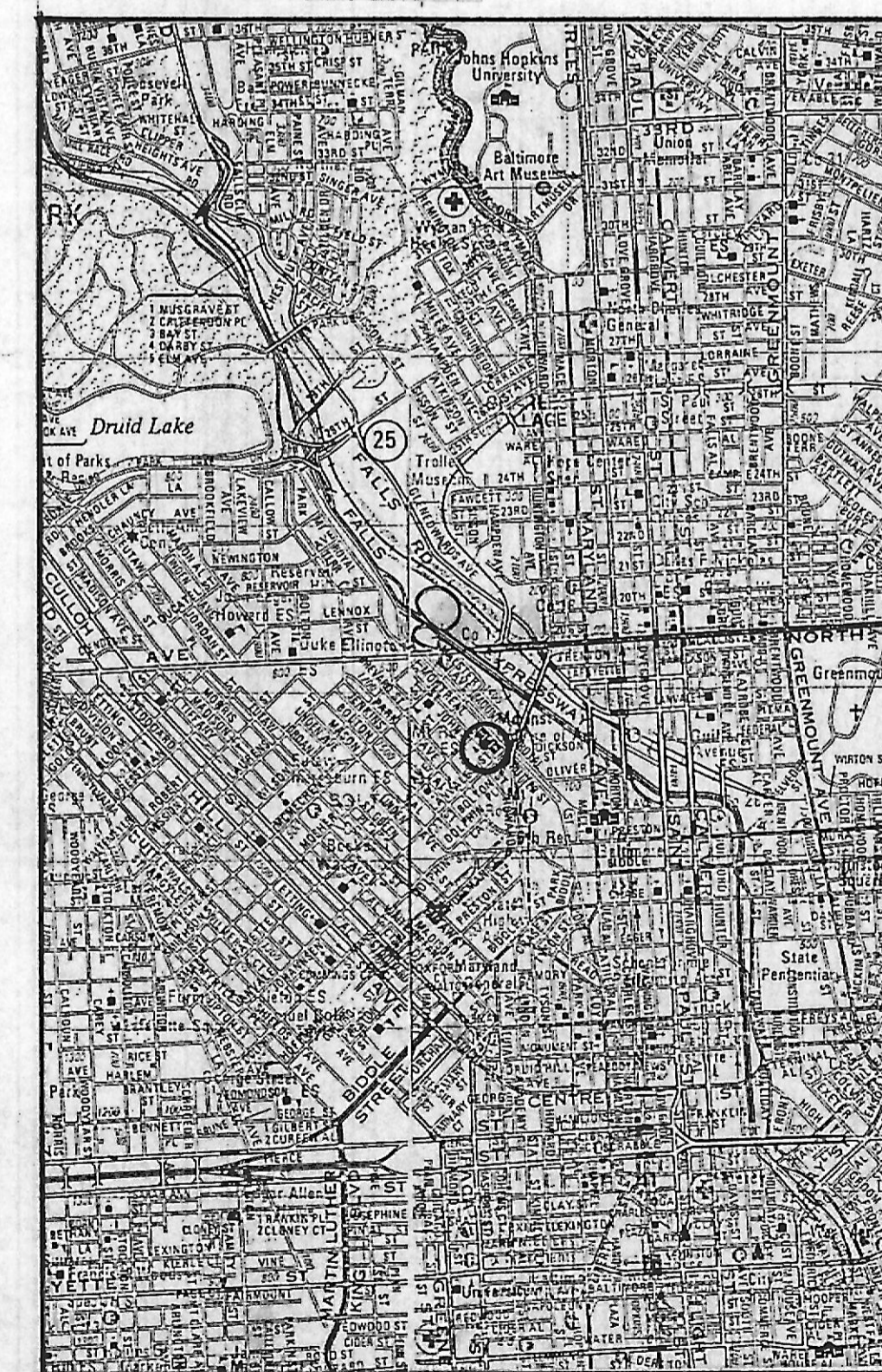
Cho, Wilks & Benn
Kibart, Inc.
LPJ, Inc.

Index

- C-1 Cover Sheet
- A-101 Site Plan
- A-201 Demolition: Basement
- A-202 Demolition: First Floor
- A-203 Demolition: Second Floor
- A-204 Demolition: Third Floor
- A-205 Demolition: Roof
- A-251 Demolition: North/South Elevations
- A-252 Demolition: East Elevation
- A-301 Basement Floor Plan
- A-302 First Floor Plan
- A-303 Second Floor Plan
- A-304 Third Floor Plan
- A-305 Roof Plan
- A-351 Reflected Ceiling Plan: Basement/First
- A-352 Reflected Ceiling Plan: Second/Third
- A-401 North/South Elevations
- A-402 East Elevation
- A-501 Transverse Sections
- A-502 Main Stair Section
- A-503 Longitudinal Section - West
- A-504 Longitudinal Section - East
- A-601 Interior Elevations
- A-701 Details
- A-702 Details
- A-801 Schedules/Mall Types



Location Map



NO.	DATE	DESCRIPTION

Cho Wilks & Benn
316 North Charles Street
Baltimore, Maryland 21201
(301) 576-0440
ARCHITECTS

MARYLAND
institute

DRAWN BY: JCM CHECKED BY:

COVER SHEET

PROJECT NO: 1112 SHEET NO:

SCALE: C-1

DATE: 7/14/88

LATEST REV:

Proberts ET.

Arch. 758
Struct. 758
ME - N/A