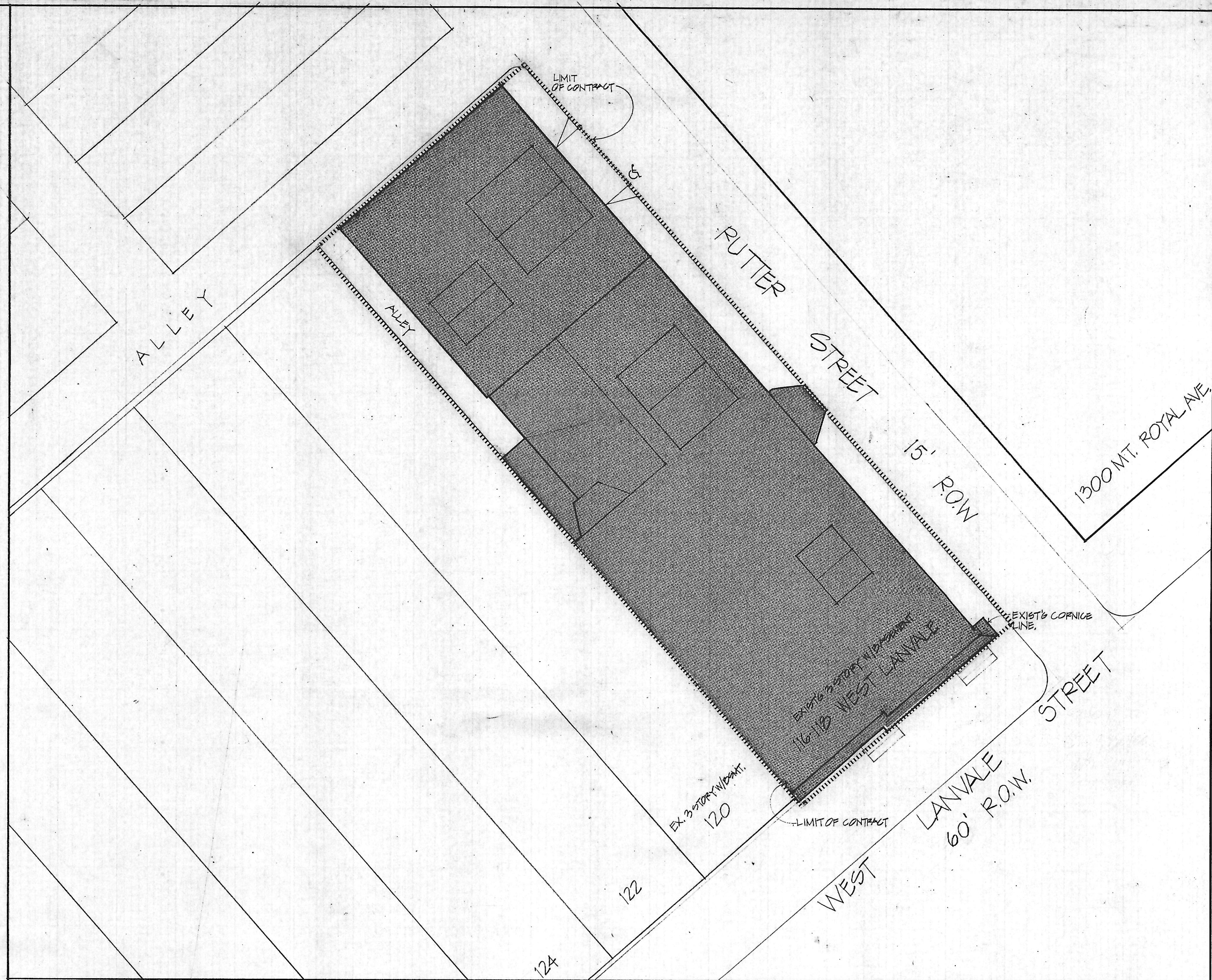


GENERAL NOTES



1 SITE PLAN
SCALE: 1/8" = 1'-0"



SITE and ZONING INFORMATION

116/118 WEST LANVALE

WARD : 14 ZONING : R-6
 SECTION: 3 SPRINKLERED: NO
 BLOCK : 404 USE GROUP: B
 LOT : 18/19 F.A.R. : 1.0
 CONSTRUCTION TYPE: 3B PARKING: REAR/SIDEYARD REQ'D - EXCEPTION FOR EXIST'G CONDITIONS
 HEIGHT: 3 STORY plus BASEMENT, 43'-EXISTING AREA : 7930 sq. ft.

ABBREVIATIONS & SYMBOLS

A.F.F. Above Finish Floor	DBL. Double	FT. Foot	O.A. Over All	T.O.B. Top of Beam
ALUM. Aluminum	DET. Detail	GALV. Galvanized	O.C. On Center	TYP. Typical
APP. Approved	DIA. Diameter	GWB. Gypsum Wall Board	OPN'G. Opening	VCT. Vinyl Composition Tile
APPROX. Approximately	DN. Down	GYP. Gypsum	PART. Partial	W. With
BETW. Between	DRWG. Drawing	H/C. Handicapped	PR. Pair	WD. Wood
BLDG. Building	DWG. Drawing	HR. Hour	PROJ. Project	WP. Waterproof
BLKG. Blocking	EA. Each	HT. Height	PT. Pressure Treated	
BM. Beam	EL. Elevation	INSUL. Insulation	PTD. Painted	
B.S. Both Sides	ELEC. Electrical	JAN. Janitor	REF. Reflected	
BSMT. Basement	ELEV. Elevation	JMO. Medium Density Overlay	REQ'D. Required	
BTM. Bottom	EQ. Equal	MECH. Mechanical	REV. Revised	
CDX. C-D Exterior	EQPT. Equipment	MFG. Manufacturer	RM. Room	
CLG. Ceiling	E.S. Each Side	MIN. Minimum	SHT. Sheet	
C.M.U. Concrete Masonry Unit	EX. Existing	MO. Masonry Opening	SIM. Similar	
CONC. Concrete	EXIST. Existing	MTL. Metal	SP. Space	
CONN. Connection	EXT. Exterior	N. North	ST. Street	
CONST. Construction	FF. Finished Floor	N.I.C. Not In Contract	STL. Steel	
CONT. Continuous	FLR. Floor	NO. Number	STRUCT. Structural	

- = HANDICAPPED ACCESS
- = HANDICAPPED ACCESSIBLE SPACE
- = DEMOLITION NOTES
- = WINDOW TYPES, SEE A.D.O.I.
- = WALL TYPES, SEE A.D.O.I.
- = FINISHES, SEE A.D.O.I.
- = PAINT COLOR
- = DOOR/HARDWARE TYPES - SEE A.D.O.I.

Cho Wilks & Benn
 316 North Charles Street
 Baltimore, Maryland 21201
 (301) 576-0440
ARCHITECTS

MARYLAND institute

DRAWN BY: JCM CHECKED BY:

SITE PLAN

PROJECT NO: 1712 SHEET NO: **A-101**
 SCALE: 1/8" = 1'-0"
 DATE: 26 MAY 88
 LATEST REV: