

**GENERAL NOTES:**

- REFER TO E001 FOR LEGEND, ABBREVIATIONS AND GENERAL NOTES.
- COORDINATE ALL PITCH/SHAFT DEVICES INCLUDING, BUT NOT LIMITED TO SWITCHES, OUTLETS, FIRE ALARM DEVICES WITH PIT LADDERS, ELEVATORS BEAMS, TRAVEL CABLES, ETC.
- COORDINATE RECEPTACLE LOCATIONS IN ROOM 110 COMMONS WITH OWNER AND ARCHITECT PRIOR TO ROUGH-IN.

**DRAWING NOTES:**

- PROVIDE HARDWIRED CONNECTION ABOVE ACCESSIBLE CEILING FOR CORD REEL. PROVIDE CORD REEL MOUNT TO RIGID STRUCTURE ABOVE ACCESSIBLE CEILING. PROVIDE NEMA 5-20R, GFCI DUPLEX RECEPTACLE FOR BELOW CEILING CONNECTION POINT. COORDINATE WITH ARCHITECT AND CEILING TILE PROVIDER / INSTALLER PRIOR TO ROUGH-IN. CORD REEL BASIS OF DESIGN: HUBBELL HBL25212, RECEPTABLES BASIS OF DESIGN: HBL5596C.
- PROVIDE COMBINATION POWER/DATA, 6" DEEP RECESSED FLOOR BOX WITH INDUSTRIAL CARPET INSERT, (2) DUPLEX RECEPTABLES AND (1) IT/DATA GANG. PROVIDE 1-1/4" SPARE CONDUIT WITH PULL STRING TO NEAREST ACCESSIBLE CEILING SPACE FOR DATA. COORDINATE DATA DEVICES WITH DIVISION 27, 28 AND OWNER. BASIS OF DESIGN: LEGRAND EP845.
- PROVIDE POWER CONNECTION FOR FUME HOOD. PROVIDE ALL NECESSARY RACEWAYS, JUNCTION BOXES, WIRING, AND INTERCONNECTIONS TO PROVIDE A COMPLETE AND OPERABLE SYSTEM. COORDINATE WITH DISPLAY CASE PROVIDER/INSTALLER.
- DISCONNECT AND STARTER PROVIDED BY DIVISION 23 AND INSTALLED BY DIVISION 26.
- PROVIDE POWER CONNECTIONS FOR DISPLAY CASE. PROVIDE ALL NECESSARY RACEWAYS, JUNCTION BOXES, WIRING, AND INTERCONNECTIONS TO PROVIDE A COMPLETE AND OPERABLE SYSTEM. COORDINATE WITH DISPLAY CASE PROVIDER/INSTALLER. REFER TO LIGHTING DRAWINGS FOR ADDITIONAL INFORMATION.
- PROVIDE ELECTRICAL CONNECTION FOR HAND DRYER. PROVIDE ALL NECESSARY RACEWAYS, JUNCTION BOXES, WIRING, AND INTERCONNECTIONS TO PROVIDE A COMPLETE AND OPERABLE SYSTEM. COORDINATE WITH EQUIPMENT PROVIDER/INSTALLER.
- PROVIDE MASTER EMERGENCY POWER OFF SWITCH FOR PANEL RP1CS. PROVIDE YELLOW, FLUSH, TURN TO RESET (SUSTAINED CONTACTS), PUSHBUTTON WITH UNIVERSAL TAMPER COVER, 2 SETS OF FORM C CONTACTS AND TEXT READING "EMERGENCY POWER OFF" (ST1 STOPPER STATION SERIES SS2-2-PO OR APPROVED EQUAL). ACTIVATION OF EPO SHALL OPEN MAIN CIRCUIT BREAKER OF PANEL RP1CS. REFER TO SHUNT TRIP CONNECTION DIAGRAM ON SHEET E001 FOR MORE INFORMATION.
- PROVIDE 120V SUPPLY CIRCUIT FOR GAS SHUT-OFF SOLENOID. SOLENOID SHALL OPEN MAIN CIRCUIT BREAKER OF PANEL RP1CS. REFER TO SHUNT TRIP CONNECTION DIAGRAM ON SHEET E001 FOR MORE INFORMATION.
- PROVIDE 120V SUPPLY CIRCUIT FOR RECIRCULATING WATER SHUT-OFF SOLENOID. SOLENOID PROVIDED UNDER DIVISION 22. REFER TO PLUMBING DRAWINGS FOR ADDITIONAL INFORMATION.
- PROVIDE 208V, 2P MANUAL MOTOR STARTER IN NEMA 1 ENCLOSURE.
- PROVIDE RECESSED COMBINATION FLOOR BOX WITH METALLIC COVER AND SYSTEMS FURNITURE CONNECTION FOR PRE-WIRED SYSTEMS FURNITURE. PROVIDE POWER CIRCUIT. PROVIDE 1-1/4" SPARE CONDUIT WITH PULL STRING FROM BOX TO NEAREST ACCESSIBLE CEILING SPACE FOR DATA CABLES. PROVIDE JUNCTION BOX CONNECTION FOR PRE-WIRED SYSTEMS FURNITURE. PROVIDE FLEX CONNECTION AND FINAL CONNECTION FROM JUNCTION TO FURNITURE CONNECTION LOCATION. COORDINATE CONNECTION REQUIREMENTS AND LOCATIONS WITH FURNITURE PROVIDER / INSTALLER PRIOR TO PURCHASING AND INSTALLING BOX EQUIPMENT.
- PROVIDE ELECTRICAL CONNECTION FOR UPS EQUIPMENT. PROVIDE ALL NECESSARY RACEWAYS, JUNCTION BOXES, WIRING, AND INTERCONNECTIONS TO PROVIDE A COMPLETE AND OPERABLE SYSTEM. COORDINATE WITH SYSTEM PROVIDER/INSTALLER.
- COORDINATE RECEPTACLE LOCATIONS AND TYPES IN THIS ROOM WITH OWNER, DIVISION 27, AND DIVISION 28 PRIOR TO ROUGH-IN.
- CIRCUIT ALL RECEPTABLES IN THIS ROOM TO THE PANEL NOTED UNLESS OTHERWISE NOTED. CONNECT TO THE CIRCUIT NUMBER SHOWN NEXT TO RECEPTACLE.
- RECEPTACLE PROVIDED BY CASEWORK MANUFACTURER. PROVIDE ALL NECESSARY RACEWAYS, WIRING AND INTERCONNECTIONS TO PROVIDE A COMPLETE AND OPERABLE SYSTEM. COORDINATE WITH SYSTEM PROVIDER/INSTALLER.
- PROVIDE 1-1/4" SPARE CONDUIT FROM FLOOR BOX TO SMARTBOARD FOR DATA CONNECTION. COORDINATE WITH OWNER AND SYSTEM PROVIDER/INSTALLER.
- MOTORIZED WINDOW SHADE SUPPLIED UNDER DIVISION 11. PROVIDE DISCONNECT SWITCH, AND JUNCTION BOX OR RECEPTACLE AS REQUIRED FOR FINAL EQUIPMENT INSTALLED. PROVIDE JUNCTION BOXES, RACEWAYS, WIRING AND ALL INTERCONNECTIONS TO PROVIDE A COMPLETE AND OPERABLE SYSTEM. PROVIDE EMPTY 3/4" CONDUIT FROM CONTROL LOCATION TO SCREEN FOR CONTROL INTERCONNECTION. COORDINATE WITH EQUIPMENT PROVIDER/INSTALLER.
- MOTORIZED WINDOW SHADE CONTROL SWITCH(STATION)S) DEVICE SUPPLIED BY DIVISION 11 AND INSTALLED UNDER DIVISION 26. PROVIDE ALL NECESSARY RACEWAYS, JUNCTION BOXES, WIRING AND ALL INTERCONNECTIONS TO PROVIDE A COMPLETE AND OPERABLE SYSTEM. COORDINATE WITH EQUIPMENT PROVIDER/INSTALLER. LOCATION OF CONTROL SWITCH WITH OWNER.
- PROVIDE MASTER EMERGENCY POWER OFF SWITCH FOR PANEL RP1DS. PROVIDE YELLOW, FLUSH, TURN TO RESET (SUSTAINED CONTACTS), PUSHBUTTON WITH UNIVERSAL TAMPER COVER, 2 SETS OF FORM C CONTACTS AND TEXT READING "EMERGENCY POWER OFF" (ST1 STOPPER STATION SERIES SS2-2-PO OR APPROVED EQUAL). ACTIVATION OF EPO SHALL OPEN MAIN CIRCUIT BREAKER OF PANEL RP1DS. REFER TO SHUNT TRIP CONNECTION DIAGRAM ON SHEET E001 FOR MORE INFORMATION.
- PROVIDE 208V, 2P MANUAL MOTOR STARTER IN NEMA 1 ENCLOSURE.
- PROVIDE RECESSED COMBINATION FLOOR BOX WITH METALLIC COVER AND SYSTEMS FURNITURE CONNECTION FOR PRE-WIRED SYSTEMS FURNITURE. PROVIDE POWER CIRCUIT. PROVIDE 1-1/4" SPARE CONDUIT WITH PULL STRING FROM BOX TO NEAREST ACCESSIBLE CEILING SPACE FOR DATA CABLES. PROVIDE JUNCTION BOX CONNECTION FOR PRE-WIRED SYSTEMS FURNITURE. PROVIDE FLEX CONNECTION AND FINAL CONNECTION FROM JUNCTION TO FURNITURE CONNECTION LOCATION. COORDINATE CONNECTION REQUIREMENTS AND LOCATIONS WITH FURNITURE PROVIDER / INSTALLER PRIOR TO PURCHASING AND INSTALLING BOX EQUIPMENT.
- PROVIDE 208V, 2P, 30A NON-FUSED DISCONNECT SWITCH IN NEMA 1 ENCLOSURE.
- PROVIDE WIRING AND CONDUIT FOR ALL ELECTRICAL INTERCONNECTIONS FROM DSS UNIT TO DSSCU UNIT LOCATED ON ROOF TOP. PROVIDE POWER SUPPLY FROM PANEL BOARD OR FROM ASSOCIATED OUTDOOR DSS UNIT AS REQUIRED BY FINAL EQUIPMENT INSTALLED. COORDINATE WITH DSS/DSSCU PROVIDER/INSTALLER.
- PROVIDE 1-1/4" SPARE CONDUIT FROM FLOOR BOX TO TELEVISION FOR DATA CONNECTION. COORDINATE WITH OWNER AND SYSTEM PROVIDER/INSTALLER.
- PROVIDE RECESSED FLOOR BOX WITH METALLIC COVER AND TWO (2) DUPLEX RECEPTABLES.
- COORDINATE FINAL RECEPTACLE LOCATIONS IN THIS ROOM WITH OWNER AND ARCHITECT PRIOR TO ROUGH-IN.
- PROVIDE COMBINATION POWER/DATA, 6" DEEP RECESSED FLOOR BOX WITH INDUSTRIAL CARPET INSERT, (2) DUPLEX RECEPTABLES AND (1) IT/DATA GANG. PROVIDE 3/4" SPARE CONDUIT WITH PULL STRING FROM BOX TO NEAREST ACCESSIBLE CEILING SPACE ON FIRST FLOOR FOR DATA CABLES. PROVIDE DEVICE PLATES AS NECESSARY. BASIS OF DESIGN: LEGRAND DATA SERIES RECEPTABLES. COORDINATE WITH DEVICES IN MECHANICAL/ELECTRIC ROOMS BELOW WHILE MAINTAINING ALL CODE REQUIRED CLEARANCES IN THE SPACE BELOW.

FIRST FLR ROOM LIST	
111	ELEVATOR
112	SCIENCE CLASSROOM
115	PIEF ROOM
114	SCIENCE CLASSROOM
105	ELECT.
117	TOILET
104	CYBER LAB
117B	STORAGE
121A	CYBER I.T.
121A	STORAGE
119	LEARNING COMMONS
121	OFFICE
121	ELECT.
113	TOILET
119	MEDIA
116B	MURRAY TESTING #2
115	I.T.
116	MURRAY CLASSROOM
114	TESTING #1
119	VESTIBULE
120	LOBBY
101	RECEPTION
104	CONFERENCE
102	CORRIDOR
107	A.P. #2
103	FACULTY ROOM
106	STORAGE
109	WORK ROOM
130	A.P. #1
130	TOILET
110	JANITOR
109	ELEC RM
133	STAIR - B
134	CORRIDOR
135	STAIR - A



SEAL:  
PROFESSIONAL CERTIFICATION. I HEREBY CERTIFY THAT THESE DOCUMENTS WERE PREPARED OR APPROVED BY ME, AND THAT I AM A DULY LICENSED ENGINEER UNDER THE LAWS OF THE STATE OF MARYLAND. LICENSE NUM. EXP. DATE:

PROJECT:  
**INNOVATIVE LEARNING CENTER**  
NEW MIDDLE SCHOOL

500 CHESTNUT AVE  
TOWSON, MD 21204

PREPARED FOR:  
**LOYOLA BLAKEFIELD**

500 CHESTNUT AVE  
TOWSON, MD 21204

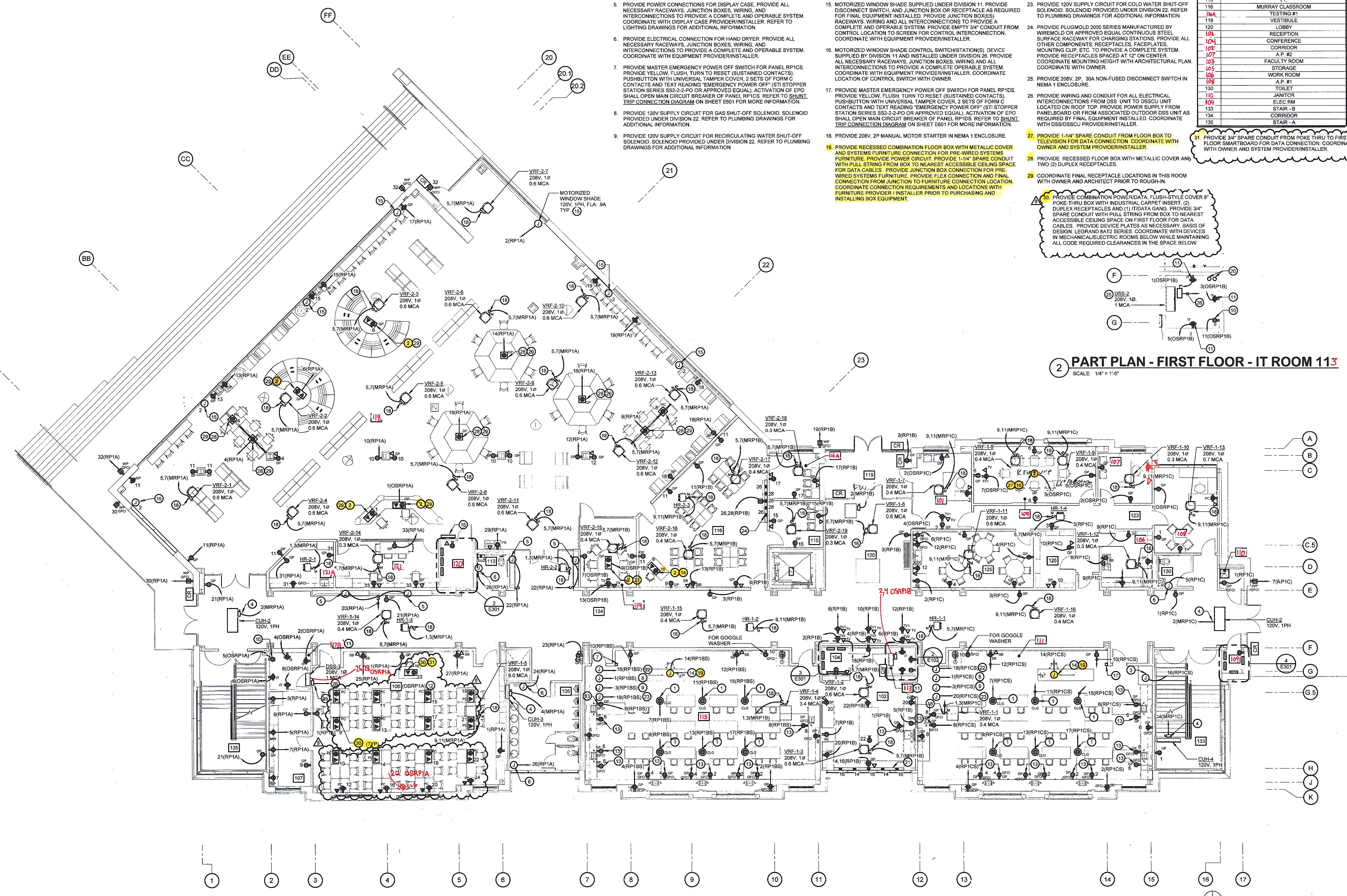
12-08-2019 CONFORMED SET  
MARK DATE DESCRIPTION  
PROJECT NO: 18-00386-001  
DATE: AUGUST 30, 2019  
SCALE: As indicated  
DESIGNED BY: BKM  
DRAWN BY: BKM  
CHECKED BY: BKM

DRAWING TITLE:  
**FIRST FLOOR PLAN POWER**

SHEET NUMBER:  
**E102**

L  
E  
D  
C  
B  
A

L  
U  
D  
C  
B  
A



**2 PART PLAN - FIRST FLOOR - IT ROOM 113**  
SCALE: 1/4" = 1'-0"

**1 FIRST FLOOR PLAN - POWER**  
SCALE: 1/8" = 1'-0"

Created using AutoCAD 2019. Plot: 18-00386-001\_E102.dwg, 18-08-2019 10:28:02 AM. User: jmt