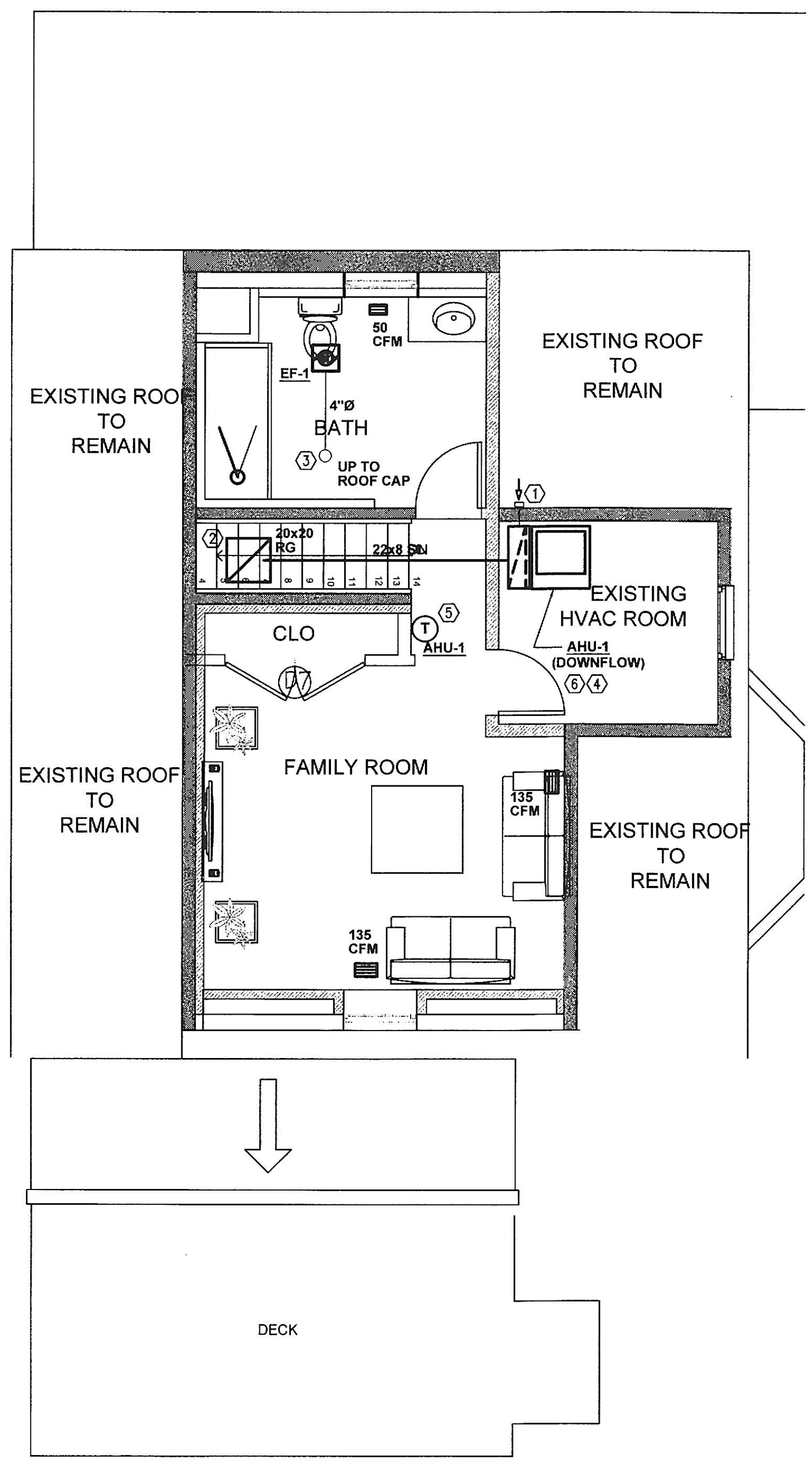


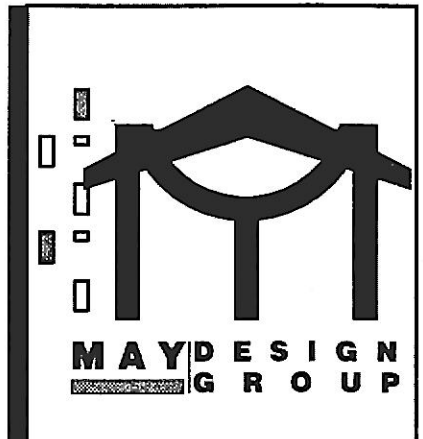
PROPOSED SECOND FLOOR PLAN
SCALE = 1/4"=1'-0"



PROPOSED THIRD FLOOR PLAN
SCALE = 1/4"=1'-0"

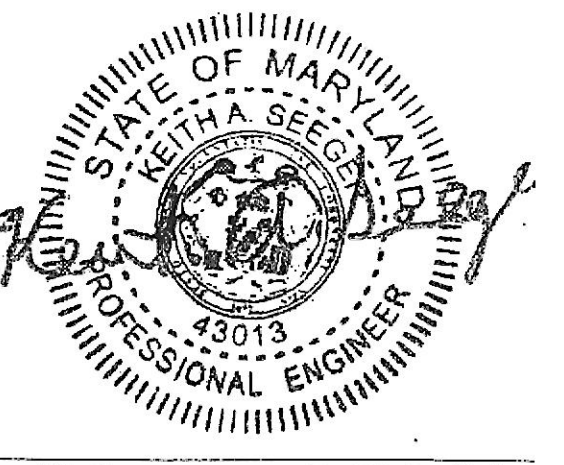
- KEYED NOTES – NEW WORK**
- ① ROUTE 6" ØA (INSULATED) DUCT TO EXTERIOR WALL AND PROVIDE WALL CAP. MAINTAIN CODE REQUIRED CLEARANCE FROM BUILDING OPENINGS. PROVIDE WITH MOTORIZED DAMPER AND VOLUME DAMPER.
 - ② PROVIDE RA GRILLE.
 - ③ 4" ROUTE EA DUCT TO EXTERIOR WALL OR ROOF AND PROVIDE SEHO WALL CAP WITH BACKRAFT DAMPER OR ROOF CAP. EA DUCT SIZE SHALL BE 4" FOR ONE EXHAUST FAN. LOCATE MINIMUM 3 FEET HORIZONTALLY FROM OPERABLE WINDOW EDGE.
 - ④ ROUTE REFRIGERANT PIPING BETWEEN INDOOR AND OUTDOOR UNIT. EXACT ROUTE TO BE DETERMINED IN FIELD. MAINTAIN SERVICE CLEARANCE AROUND UNIT.
 - ⑤ PROVIDE PROGRAMMABLE THERMOSTAT. TYPICAL.
 - ⑥ CONNECT CONDENSATE LINE TO FLOOR DRAIN GC TO COORDINATE, TYP.
 - ⑦ DUCT UP TO FLOOR REGISTER. PROVIDE FLOOR REGISTER BOOT. TYPICAL.

- GENERAL NOTES – NEW WORK**
- REFER TO DRAWING M100 AND M101 FOR SYMBOLS, ABBREVIATIONS, SCHEDULES, GENERAL NOTES AND DETAILS
- COORDINATE WITH ARCHITECT/OWNER FOR EXACT LOCATION OF AIR DEVICES IN CEILING.
- PROVIDE ELECTRONIC WATER DETECTION DEVICE WITH ALARM IN CONDENSATION DRAIN PAN INTERLOCKED TO SHUTDOWN AIR HANDLING UNIT.
- PROVIDE 7 DAY PROGRAMMABLE THERMOSTAT MOUNTED 48" AFF. PROVIDE HONEYWELL PRO8000 TSTAT WITH AN OUTDOOR SENSOR TO MAINTAIN BALANCE POINT BETWEEN HP AND BACK-UP HEAT. WHEN THE ZONE THERMOSTAT GENERATES A CALL FOR HEATING, SWITCH THE HEAT PUMP TO HEATING MODE. IF THE HEAT PUMP CAN NOT MEET THE HEATING REQUIREMENT, THE HEAT PUMP WILL BE LOCKED OUT AND THE BACK UP RESISTANCE HEATER WILL BE ENABLED TO SUPPLY THE REQUIRED HEAT TO THE ZONE. ELECTRIC HEATER SHALL NOT ENERGIZED WHEN THE HEATING LOAD COULD BE MET BY THE HEAT PUMP SYSTEM.
- HVAC REGISTER BOOTS THAT PENETRATE BUILDING THERMAL ENVELOPE SHALL BE SEALED TO THE SUB FLOOR OR DRYWALL.
- PROVIDE MOTORIZED DAMPER FOR OUTDOOR AIR INTAKES SHALL BE PROVIDED WITH CLASS 1A MOTORIZED DAMPERS WITH A MAXIMUM LEAKAGE RATE OF 40CFM/FT² AT 1.0 INCH WATER GAUGE (W.G.) WHEN TESTED IN ACCORDANCE WITH AMCA 5000D.
- PROVIDE BACKDRAFT (GRAVITY) DAMPER FOR BATHROOM, KITCHEN EXHAUST FANS, SHALL HAVE A LEAKAGE OF 40 CFM/FT² AT 1.0 INCH WATER GAUGE (W.G.) WHEN TESTED IN ACCORDANCE WITH AMCA 500D.
- CONTRACTOR SHALL SUPPLY AND INSTALL ALL NECESSARY DUCT ACCESSORIES; SUCH AS VOLUME DAMPERS, FIRE DAMPERS, TURNING VANES, DUCT HARDWARE, DUCT ACCESS DOORS, FLEXIBLE CONNECTIONS, AND CEILING ACCESS DOORS. THE CONTRACTOR SHALL COMPLY WITH SMACNA DUCT CONSTRUCTION STANDARDS. COORDINATE INSTALLATION OF DUCT ACCESSORIES WITH OTHER WORK.
- DRYER AND KITCHEN EXHAUST DUCTS THAT PENETRATE FIRE RATED ASSEMBLY SHALL BE CONSTRUCTED OF STEEL HAVING A MINIMUM WALL THICKNESS OF 0.0187 INCHES (NO. 26 GAGE).
- PROPOSED LOCATION OF BACKDRAFT DAMPER FOR BATHROOM EXHAUST AND KITCHEN HOOD AND MOTORIZED DAMPER FOR OA DUCT. PROVIDE AN ACCESS PANEL AT DRY WALL CEILING & INSPECTION DOOR. SEE DETAIL.
- PROTECT DUCT PENETRATION OF THE FIRE RATED ASSEMBLY WITH AN APPROVED FIRESTOP MATERIAL (3M FIRE PROTECTION PRODUCTS—TYPE CP-20WB+ CAULK, FB-3000WT SEALANT, OR APPROVED EQUAL).



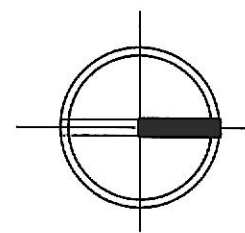
4015 WOODLEA AVE
BALTIMORE, 21206 MD
SQ: 6,996 LOT: 016

PROFESSIONAL CERTIFICATION:
I HEREBY CERTIFY THAT THESE DOCUMENTS WERE PREPARED AND APPROVED BY ME, AND THAT I AM A DULY LICENSED PROFESSIONAL ENGINEER UNDER LAWS OF THE STATE OF MARYLAND.
LICENSE NO.: 43013 EXPIRATION DATE: 12-11-2020



SCALE: AS NOTED
DATE:
PROJECT NUMBER:

FLOOR PLANS



M101