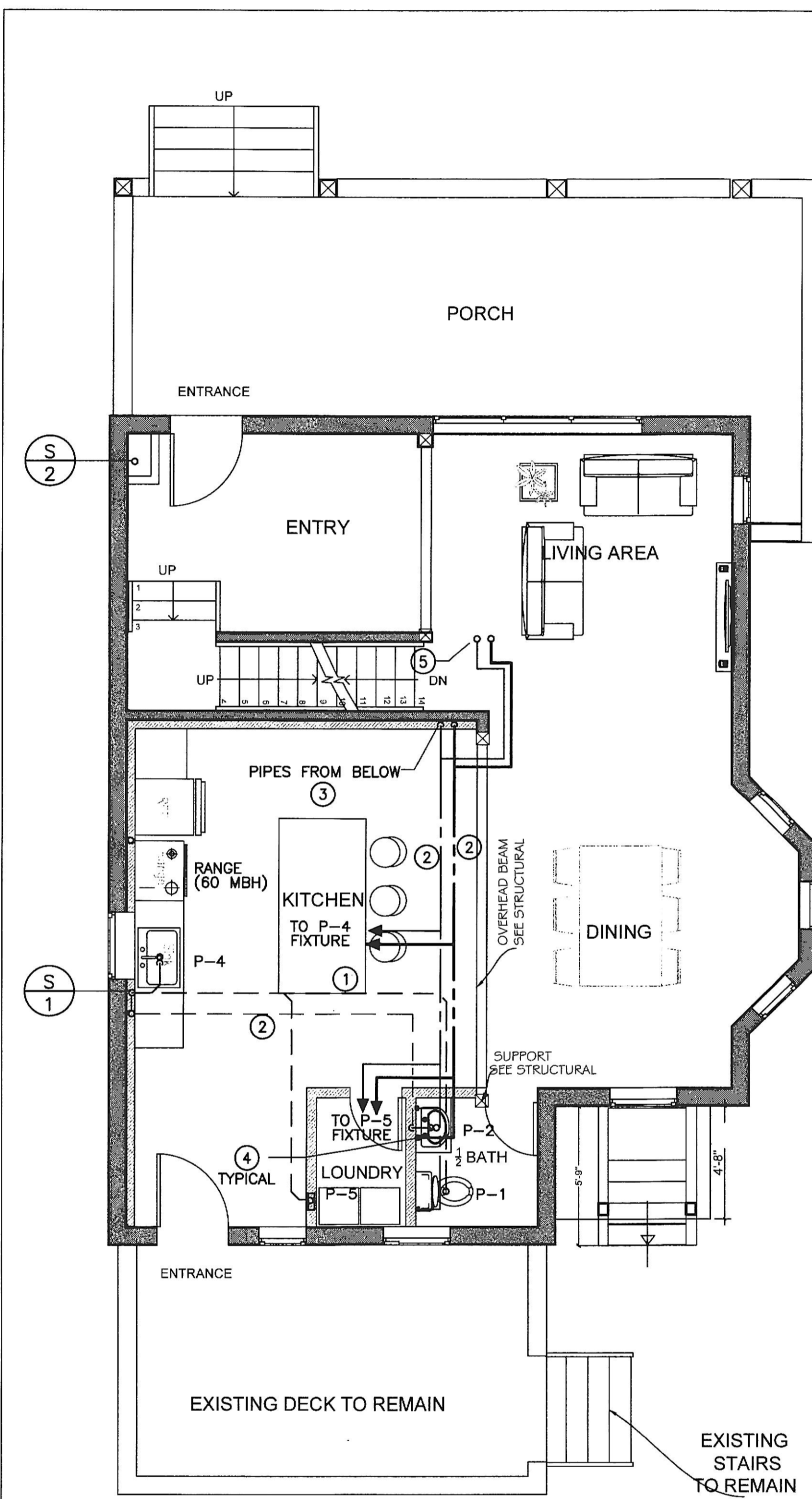


**PROPOSED BASEMENT PLAN**  
SCALE = 1/4"=1'-0"



**PROPOSED FIRST FLOOR PLAN**  
SCALE = 1/4"=1'-0"

**GENERAL NOTES**

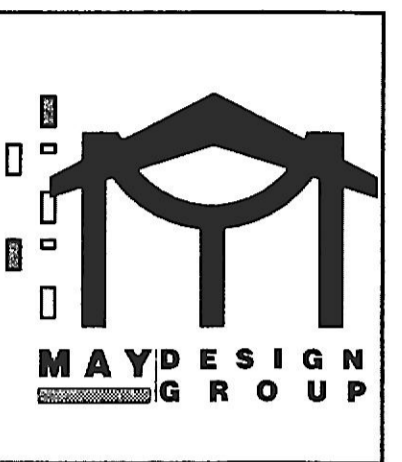
1. SEE SPECIFICATIONS FOR PLUMBING PIPING INSULATION R-VALUE.
2. PROVIDE BACKWATER VALVE IN SANITARY LINE.
3. PROVIDE SHUT-OFF VALVE.
4. PROVIDE WATER HAMMER ARRESTORS FOR DISHWASHER AND WASHING MACHINE.
5. PROVIDE EXPANSION TANK TO SERVE HOT WATER HEATER.
6. PROVIDE ANTI-SCALD MIXING VALVE FOR TUB AND SHOWER. MAX TEMPERATURE: 120°F.
7. WATER TEMPERATURE CONTROLS SHALL BE PROVIDED ON WATER HEATER TO CONTROL TEMPERATURE BETWEEN 110°F AND MAX.

**REFERENCED PLAN NOTES**

- ① SEE CIVIL DRAWINGS FOR CONTINUATION.
- ② GAS PRV AND GAS METER PROVIDED BY GAS COMPANY.
- ③ 1.25" CW LINE FROM 1.5" WATER METER VAULT. SEE CIVIL DRAWING FOR CONTINUATION.
- ④ 0.75"HW AND 0.75"CW TO SERVE GW-1. SEE DWH DETAIL FOR CONTINUATION.
- ⑤ INSTALL THE FOLLOWING AT ACCESSIBLE LOCATIONS UNDER COUNTER: WATER HAMMER, SHUT-OFF VALVE AND BACKFLOW PREVENTER FOR DW.
- ⑥ 1.5" FIRE SERVICE LINE. SPRINKLER SYSTEM BY SPRINKLER CONTRACTOR.
- ⑦ SEE RISER DIAGRAM FOR PIPE SIZES

**REFERENCED PLAN NOTES ⑧**

1. PIPE(S) BELOW FLOOR
2. PIPE(S) ABOVE CEILING
3. PIPE(S) UP TO FIXTURE
4. PIPE(S) DN TO FIXTURE
5. PIPE(S) UP TO CLG FLOOR ABOVE



4015 WOODLEA AVE  
BALTIMORE, 21206 MD  
SQ: 6,996 LOT: 016

PROFESSIONAL CERTIFICATION:  
I HEREBY CERTIFY THAT THESE DOCUMENTS WERE PREPARED AND APPROVED BY ME, AND THAT I AM A DULY LICENSED PROFESSIONAL ENGINEER UNDER LAWS OF THE STATE OF MARYLAND.  
LICENSE NO: 43013 EXPIRATION DATE: 12-11-2020



SCALE: AS NOTED

DATE:

PROJECT NUMBER:

**FLOOR PLANS**

**P100**

