

Check CD.
 Consider
 Wire up #yed to the machine

MECHANICAL LEGEND

| | | | |
|-----|---|--|---|
| AFF | ABOVE FINISHED FLOOR | | SUPPLY AIR DUCT - INSIDE DIMENSION - 20"HORZ.X12"VERT. (TURNED UP/DOWN) |
| TYP | TYPICAL | | RETURN AIR DUCT - INSIDE DIMENSION - (TURNED UP/DOWN) |
| NTS | NOT TO SCALE | | EXHAUST AIR DUCT - INSIDE DIMENSION - (TURNED UP/DOWN) |
| NO | NORMALLY OPEN | | OUTSIDE AIR DUCT - INSIDE DIMENSION - (TURNED UP/DOWN) |
| NC | NORMALLY CLOSED | | SUPPLY AIR DUCT - ROUND 14" DIAMETER |
| | TAGGED NOTE | | REFRIGERANT PIPING - VRF MANUFACTURER |
| | MECHANICAL EQUIPMENT DESIGNATOR XXX - EQUIPMENT TYPE YY - EQUIPMENT SIZE ZZZ - UNIQUE IDENTIFIER | | CONDENSATE DRAIN LINE |
| | INDICATES AIR DISTRIBUTION DEVICE SPECIFICATION (L=LOUVER, T=TRANSFER GRILLE, S=SUPPLY DIFFUSER OR REGISTER, R=RETURN GRILLE OR REGISTER, E=EXHAUST GRILLE OR REGISTER) | | NATURAL GAS |
| | FLEXIBLE DUCT | | PIPING/ROUND DUCTWORK CONTINUATION |
| | ACCESS DOOR IN BOTTOM OF DUCT | | PIPING TRANSITION |
| | ACCESS DOOR IN SIDE OF DUCT | | DIRECTION OF FLOW (PIPING) |
| | OPPOSED BLADE DAMPER (MOTORIZED) | | PIPING ELBOW (TURNED UP/DOWN) |
| | VOLUME DAMPER (MANUAL) | | PIPING TEE (TURNED UP/DOWN) |
| | TURNING VANES | | CLEAN OUT |
| | FIRE DAMPER | | ACCESS DOOR IN CEILING |
| | FIRE/SMOKE DAMPER | | PRESSURE RELIEF DOOR |
| | SMOKE DAMPER | | TEMPERATURE SENSOR |
| | OFFSET UP IN DIRECTION OF ARROW | | THERMOSTAT |
| | DUCTWORK CONTINUATION | | HUMIDISTAT |
| | | | CARBON DIOXIDE SENSOR |
| | | | DUCT SMOKE DETECTOR |
| | | | DUCT MOUNTED PRESSURE SENSOR |
| | | | MANUAL RELEASE FOR STAGE SMOKE VENTS |
| | | | MANUAL SWITCH FOR FAN |

- GENERAL NOTES (APPLICABLE TO ALL DRAWINGS)**
- EACH CONTRACTOR, SUPPLIER AND/OR MANUFACTURER SHALL REFER TO ALL DOCUMENTS PERTAINING TO THIS PROJECT AND COORDINATE ACCORDINGLY SO AS TO ENSURE ADEQUACY OF FIT, COMPLIANCE WITH SPECIFICATIONS, PROPER VOLTAGE AND CURRENT CHARACTERISTICS AND AVOID CONFLICT WITH ANY OTHER BUILDINGS SYSTEMS. VERIFY SAME WITH SHOP DRAWINGS.
 - ALL OFFSETS, TURNS, FITTINGS, TRIM, DETAIL, ETC., MAY NOT BE INDICATED, BUT SHALL BE PROVIDED AS REQUIRED. ADDITIONAL ALLOWANCES SHALL BE INCLUDED FOR SAME AT EACH PROPOSERS' DISCRETION.
 - OBSERVE ALL APPLICABLE CODES, RULES AND REGULATIONS (CITY, COUNTY, LOCAL, STATE, FEDERAL, MUNICIPALITY, UTILITY COMPANY, OSHA, ETC.).
 - ALL SYSTEMS, EQUIPMENT AND MATERIALS ARE TO BE INSTALLED IN A NEAT AND WORKMANLIKE MANNER. WORK NOT DONE SO SHALL BE REMOVED AND REINSTALLED SATISFACTORILY.
 - WHERE MOUNTING HEIGHTS ARE NOT INDICATED OR ARE IN CONFLICT WITH ANY OTHER BUILDING SYSTEM, CONTACT THE ENGINEERS BEFORE INSTALLATION. REFER ALSO TO ARCHITECTURAL WALL INTERIOR AND EXTERIOR WALL ELEVATIONS, CEILING HEIGHTS AND OTHER DETAIL OF THESE DOCUMENTS.
 - DO NOT SCALE FROM DRAWINGS, PRINTING DISTORTS SCALE. WORK SHALL BE LAID OUT FROM DIMENSIONED DRAWINGS, OR DIMENSIONS SUPPLIED TO THE CONTRACTOR.
 - THIS CONTRACTOR SHALL BE RESPONSIBLE FOR ALL CUTTING AND PATCHING REQUIRED FOR HIS WORK. ALL CUTTING AND PATCHING SHALL MATCH ADJACENT SURFACES. REFER TO ARCHITECTURAL DRAWINGS FOR ADDITIONAL INFORMATION.
 - TURNING VANES SHALL BE INSTALLED IN ALL SUPPLY, RETURN, AND EXHAUST DUCT WORK ELBOWS.
 - THESE DRAWINGS ARE ACCURATE TO THE BEST OF OUR KNOWLEDGE, HOWEVER LOCATIONS, DEPTHS, ELEVATIONS AND SIZES WERE TAKEN FROM DIFFERENT SOURCES AND ARE SUBJECT TO DEVIATION. THE CONTRACTOR SHALL ASSUME SOME DEVIATIONS AND INCLUDE OFFSETS, ADDITIONAL PIPING, ETC AT THE TIME OF BID.
 - WHERE PENETRATING ROOFING MEMBRANE OR OTHER MATERIALS USED FOR WEATHERPROOFING THE BUILDING, MAKE SUCH PENETRATIONS IN A WAY THAT WILL NOT VOID OR DIMINISH THE ROOFING WARRANTY OR INTEGRITY IN ANY WAY. COORDINATE ALL SUCH PENETRATIONS WITH THE ROOFING INSTALLER.
 - DEVIATION FROM SPECIFICATIONS OR PLANS REQUIRES PRIOR WRITTEN APPROVAL FROM THE ENGINEERS AND MUST BE SUBMITTED IN WRITING NO LATER THAN TEN DAYS PRIOR TO THE BID DATE.
 - COORDINATE THE LOCATION OF DRAINS, ELECTRICAL OUTLETS, ETC. WITH ALL MECHANICAL ROOM EQUIPMENT, ETC. PRIOR TO COMMENCING INSTALLATION. WORK NOT SO COORDINATED SHALL BE REMOVED AND PROPERLY INSTALLED AT THE EXPENSE OF THE RESPONSIBLE CONTRACTOR(S).
 - THE PURPOSE AND INTENT OF ALL THE DOCUMENTS PERTAINING TO THIS PROJECT IS TO PROVIDE A COMPLETE, FUNCTIONAL, SAFE, NEW FACILITY. ANYTHING LESS SHALL BE UNACCEPTABLE.
 - ANY VIBRATING, OSCILLATING OR OTHER NOISE OR MOTION PRODUCING EQUIPMENT SHALL BE ISOLATED FROM SURROUNDING SYSTEMS IN AN APPROVED MANNER. NOISY OR STRUCTURALLY DAMAGING INSTALLATIONS SHALL BE SATISFACTORILY REPLACED OR REPAIRED AT THE INSTALLING CONTRACTOR'S EXPENSE. THE FINAL DECISION ON THE SUITABILITY OF A PARTICULAR INSTALLATION'S ACCEPTABILITY SHALL BE THAT OF THE ENGINEER.
 - INSTALL EQUIPMENT, MATERIALS, ETC. IN STRICT ACCORD WITH MANUFACTURER'S RECOMMENDATIONS AND DIRECTIONS. IF IN CONFLICT WITH THE DESIGN INDICATED IN CONTRACT DOCUMENTS, ADVISE THE ENGINEERS PRIOR TO INSTALLATION FOR CLARIFICATION.
 - ALL SUPPORTS FOR EQUIPMENT, DEVICES OR FIXTURES SHALL BE UNIQUE, FROM THE BUILDING STRUCTURE. DO NOT SUPPORT WORK FROM OTHER TRADES, EQUIPMENT OR SUPPORTS WITHOUT WRITTEN PERMISSION FROM THE ENGINEER AND CONSENT OF THE OTHER TRADE, IN WRITING. REFER TO SEISMIC PROTECTION DRAWINGS.
 - DEVIATIONS IN SIZE, CAPACITIES, FIT, FINISH, ETC. FOR EQUIPMENT FROM THAT PRIME SPECIFIED SHALL BE THE RESPONSIBILITY OF THE PURCHASER OF THAT EQUIPMENT. ANY PROVISIONS REQUIRED TO ACCOMMODATE A DEVIATION, WHETHER APPROVED BY THE ENGINEERS OR NOT, SHALL BE THE RESPONSIBILITY OF THE PURCHASER.
 - THE GENERAL CONTRACTOR FOR THIS CONSTRUCTION IS RESPONSIBLE FOR THE COORDINATION, APPEARANCE, SCHEDULING AND TIMELINESS OF THE WORK OF ALL TRADES, CONTRACTORS, SUPPLIERS, INSTALLERS, ETC.
 - VALVES, BALANCING DAMPERS OR ANY MECHANICAL/ELECTRICAL ITEM SHALL NOT BE LOCATED ABOVE A HARD CEILING. IF THIS IS NOT POSSIBLE, THEN AN APPROPRIATELY SIZED ACCESS DOOR SHALL BE PLACED UNDER THE ITEM TO ALLOW EASY MAINTENANCE AND ADJUSTMENT.
 - THE GENERAL CONTRACTOR SHALL ENSURE PROPER COORDINATION BETWEEN ALL TRADES SUCH THAT CONDUITS, PIPING, DUCTWORK, ETC. DO NOT BLOCK ACCESS TO VALVES, EQUIPMENT, DUCT ACCESS DOORS, ETC. ITEMS THAT HAVE BEEN INSTALLED WHERE ACCESS IS COMPROMISED SHALL BE RELOCATED AT THE CONTRACTOR'S EXPENSE.

VMDO

VMDO Architects
 200 E. Herriet Street
 Charlottesville, VA 22907
 434.296.5684
 vmdo.com



10411 Meeting Street
 Progress, Kentucky 40359
 502.326.3085 - F 502.326.2691
 www.cmtagr.com



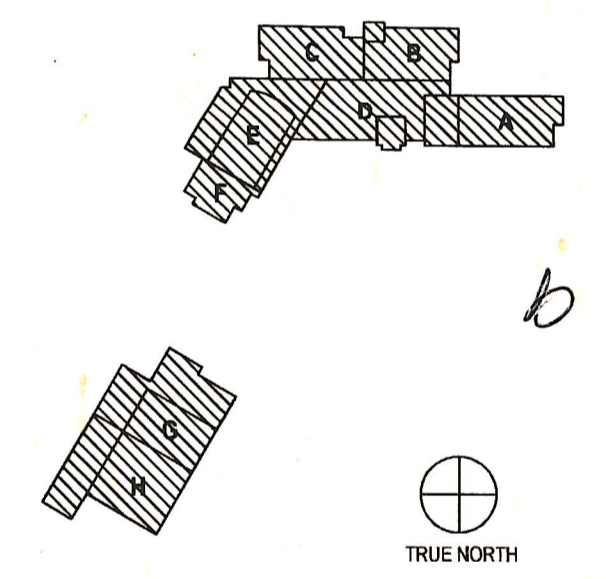
PAUL VI CATHOLIC HIGH SCHOOL

CATHOLIC DIOCESE OF ARLINGTON
 200 North Glebe Road
 Arlington, VA 22203

Loudoun County ZCPA Number 2016-XXXX
 VMDO Project Number 15.1188



Checked By _____ DRH
 Drawn By _____ CMG



| ISSUES AND REVISIONS | |
|-----------------------------|----------|
| NO. SUBMITTAL | DATE |
| 100% CONSTRUCTION DOCUMENTS | 03.17.17 |

MECHANICAL LEGEND AND GENERAL NOTES

M001