

- GENERAL NOTES: AIR DISTRIBUTION**
- CONTRACTOR RESPONSIBLE FOR LOCATING ALL HORIZONTAL UNITS CONCEALED ABOVE THE CEILING SO THAT ALL REQUIRED CLEARANCES ARE MAINTAINED AND COORDINATED WITH ALL TRADES. REFER TO INSTALLATION DETAILS ON SHEET M801. PROVIDE ACCESS DOOR IF REQUIRED.
 - CONTRACTOR RESPONSIBLE FOR LOCATING ALL DAMPERS IN DUCTWORK SO THAT ACCESSIBILITY IS MAINTAINED. COORDINATE WITH CEILING SYSTEM. PROVIDE ACCESS DOOR IF REQUIRED.
 - PROVIDE A HIGH EFFICIENCY TAKE-OFF AND VOLUME DAMPER AT EACH GRILLE, REGISTER, AND DIFFUSER BRANCH RUNOUT. REFER TO THE DETAIL ON SHEET M600 FOR SPECIFIC REQUIREMENTS.
 - NO DUCTWORK TO BE ROUTED OVER ELECTRICAL PANELS/TRANSFORMERS. REFER TO ELECTRICAL PLANS FOR EQUIPMENT LOCATIONS.
 - REFER TO VERTICAL UNIT INSTALLATION DETAIL ON SHEET M801 FOR SPECIFIC REQUIREMENTS.
 - REFER TO EXHAUST/RETURN AIR CANOPY DETAIL ON SHEET M600 FOR ADDITIONAL INFORMATION FOR E-6/R-6 GRILLES.
 - REFER TO CEILING CASSETTE INSTALLATION DETAIL ON SHEET M801 FOR SPECIFIC REQUIREMENTS.
 - REFER TO OUTDOOR AIR SCHEDULE FOR REQUIRED CFM AND DUCT RUN-OUT SIZE FOR ALL OUTSIDE AIR DUCTWORK ROUTED TO AC UNITS.
 - MAINTAIN MANUFACTURERS RECOMMENDED SERVICE CLEARANCE FOR ALL VAV BOXES. REFER TO DETAIL ON SHEET M600 FOR ADDITIONAL INFORMATION.

- KEYNOTES**
- PROVIDE NEOPRENE VIBRATION ISOLATION HANGERS/SUPPORT KIT WITH FAN TRANSITION TO FAN OPENING AS REQUIRED. USE FLEXIBLE CANVAS CONNECTORS AT THE INLET AND OUTLET OF THE FAN.
 - EXHAUST FAN TO BE CONTROLLED BY MANUAL SWITCH. COORDINATE WITH ELECTRICAL CONTRACTOR.
 - PROVIDE 16"x8" SHEET METAL SLEEVE IN WALL ABOVE CEILING FOR EXHAUST AIR PATH. EXTEND SLEEVE 6" ON BOTH SIDE OF WALL.
 - PROVIDE A 1/2" MESH SCREEN ON DUCT OPENING. PROVIDE EXPANDED THROAT TAP AT END OF DUCT RUN.
 - MOUNT BOTTOM OF UNIT HEATER 8" AFF.
 - MOUNT BOTTOM OF ELECTRIC HEATER 18" AFF.
 - DISCHARGE 8" ROUND DUCT TO ABOVE ADJACENT CEILING.
 - MOUNT BOTTOM OF AC UNIT 9'-0" AFF.
 - DUCTWORK UP TO FLOOR ABOVE. REFER TO SHEET M117 FOR CONTINUATION.
 - ROUTE EA DISCHARGE OUT EXTERIOR WALL AND TERMINATE WITH WALL CAP.
 - EXPOSED DUCTWORK TO HAVE CANVAS JACKET AND PAINTED. ALL STRUCTURAL BRACING/HANGERS FOR DUCTWORK TO BE PAINTED TO MATCH ADJACENT SURFACES.
 - PROVIDE PAINT CRIP DUCTWORK TO ALLOW ALL EXPOSED DUCTWORK TO BE PAINTED. ALL STRUCTURAL BRACING/HANGERS FOR DUCTWORK TO BE PAINTED TO MATCH ADJACENT SURFACES.
 - MOUNT TEMPERATURE CONTROL PANEL 4'-0" AFF. COORDINATE POWER AND DATA WITH ELECTRICAL CONTRACTOR.
 - ROUTE DUCTWORK THROUGH HOLE IN BEAM. COORDINATE HOLE LOCATION WITH STRUCTURAL DRAWINGS.
 - COORDINATE DUCTWORK ROUTING WITH LIGHTING LAYOUT. NO DUCTWORK TO BE ROUTED OVER LIGHTS.
 - MOUNT SIDEWALL GRILLE IN FACE OF SOFFIT, CENTER LINE OF GRILLE TO BE AT 8'-10" AFF.
 - CONNECT TWO (2) 12"x12" BRANCH DUCTS WITH HIGH EFFICIENCY TAKE-OFFS TO 14"x14" RISER. TERMINATE 12"x12" DUCT WITH 1/2" CUBE CORE. TYPICAL OF TWO. HOLD DUCTWORK AS HIGH AS POSSIBLE. REFER TO SHEET M117 FOR CONTINUATION.

GRD RUNOUT SCHEDULE

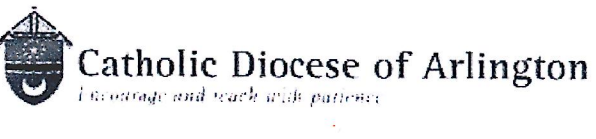
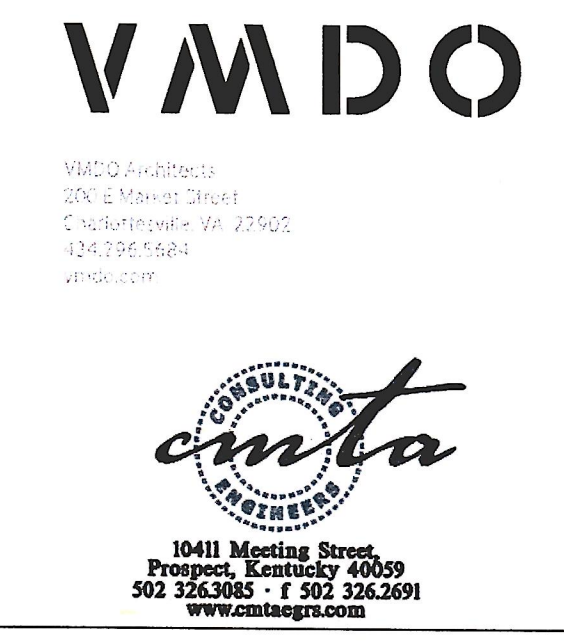
| DIFFUSER | DUCT SIZE | DIFFUSER | DUCT SIZE | GRILLE | DUCT SIZE |
|----------|-----------|----------|-----------|--------|-----------|
| S-1 | 6" | R-1 | 6" | E-1 | 6" |
| S-2 | 8" | R-2 | 8" | E-2 | 8" |
| S-3 | 10" | R-3 | 10" | E-3 | 10" |
| S-4 | 12" | R-4 | 12" | E-4 | 12" |
| S-5 | 36x4 | R-5 | 14" | E-5 | 14" |
| S-6 | 10" | R-6 | 22x22 | E-6 | 22x22 |
| S-7 | 24x6 | R-7 | 16x8 | E-7 | 10x4 |
| S-8 | 10x12" | R-8 | 36x12 | E-8 | 16x8 |
| S-9 | 10x4 | R-9 | 8" | E-9 | 36x12 |
| S-10 | 12x6 | R-10 | 8" | E-10 | 6" |
| S-11 | 16x8 | R-11 | 12" | E-11 | 8" |
| S-12 | 20x10 | R-12 | 14" | E-12 | 10" |
| S-13 | 8" | | | E-13 | 14" |
| S-14 | 6" | | | | |
| S-15 | 8" | | | | |
| S-16 | 10" | | | | |
| S-17 | 12" | | | | |

CASSETTE OA RUNOUT SCHEDULE

| UNIT | AIRFLOW | DUCT SIZE | UNIT | AIRFLOW | DUCT SIZE |
|----------------|---------|-----------|---------------|---------|-----------|
| AC-7.5MC 0808E | 25 | 6" | AC-9.5MC 1810 | 150 | 8" |
| AC-18C 0808A | 175 | 8" | AC-12MC 1811 | 150 | 8" |
| AC-7.5MC 0813E | 25 | 6" | AC-9.5MC 1812 | 100 | 8" |
| AC-7.5MC 1808 | 25 | 6" | AC-9.5MC 1813 | 100 | 8" |

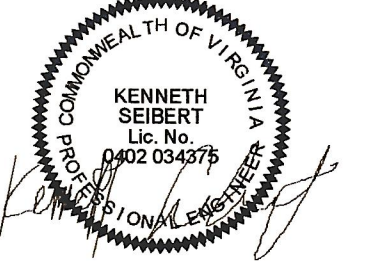
VAV DUCT RUNOUT SCHEDULE

| TAG | DUCT SIZE | TAG | DUCT SIZE |
|--------|-----------|--------|-----------|
| VAV-05 | 5" | VAV-10 | 10" |
| VAV-06 | 6" | VAV-12 | 12" |
| VAV-08 | 8" | VAV-14 | 14" |

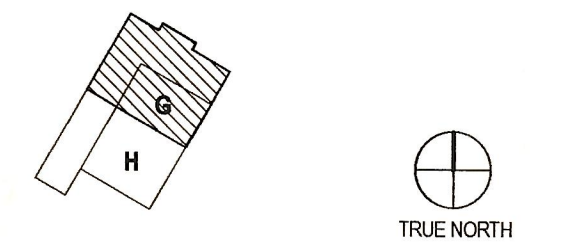
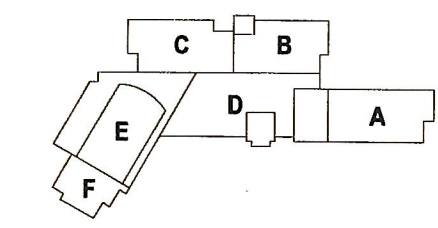


PAUL VI CATHOLIC HIGH SCHOOL

CATHOLIC DIOCESE OF ARLINGTON
 200 North Globe Road
 Arlington, VA 22203
 Loudoun County ZCPA Number 2016-0005
 VMDO Project Number 15.1188



Checked By DRH
 Drawn By CMG



ISSUES AND REVISIONS

| NO. | SUBMITTAL | DATE |
|------|------------------------|----------|
| 100% | CONSTRUCTION DOCUMENTS | 03.17.17 |
| 3 | ADDENDUM #3 | 05.04.17 |

**FLOOR PLAN LEVEL 0
 AREA G - AIR
 DISTRIBUTION**

- T Stats
- VRF
- CEFE
- Duct Smoke Det
- Elec. Heater

M107

1 LEVEL 0 - AIR DISTRIBUTION - AREA G
 1/8" = 1'-0"