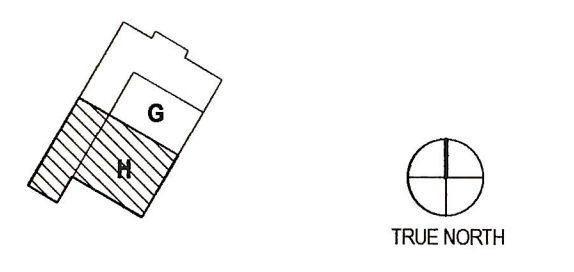
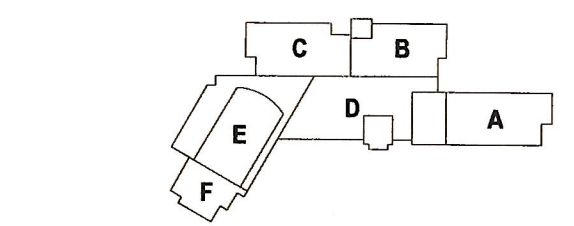


- GENERAL NOTES: AIR DISTRIBUTION**
- CONTRACTOR RESPONSIBLE FOR LOCATING ALL HORIZONTAL UNITS CONCEALED ABOVE THE CEILING SO THAT ALL REQUIRED CLEARANCES ARE MAINTAINED AND COORDINATED WITH ALL TRADES. REFER TO INSTALLATION DETAILS ON SHEET M601. PROVIDE ACCESS DOOR IF REQUIRED.
 - CONTRACTOR RESPONSIBLE FOR LOCATING ALL DAMPERS IN DUCTWORK SO THAT ACCESSIBILITY IS MAINTAINED, COORDINATE WITH CEILING SYSTEM. PROVIDE ACCESS DOOR IF REQUIRED.
 - PROVIDE A HIGH EFFICIENCY TAKE-OFF AND VOLUME DAMPER AT EACH GRILLE, REGISTER, AND DIFFUSER BRANCH RUNOUT. REFER TO THE DETAIL ON SHEET M600 FOR SPECIFIC REQUIREMENTS.
 - NO DUCTWORK TO BE ROUTED OVER ELECTRICAL PANELS/TRANSFORMERS. REFER TO ELECTRICAL PLANS FOR EQUIPMENT LOCATIONS.
 - REFER TO VERTICAL UNIT INSTALLATION DETAIL ON SHEET M601 FOR SPECIFIC REQUIREMENTS.
 - REFER TO EXHAUST/RETURN AIR CANOPY DETAIL ON SHEET M600 FOR ADDITIONAL INFORMATION FOR E-6R-6 GRILLES.
 - REFER TO CEILING CASSETTE INSTALLATION DETAIL ON SHEET M601 FOR SPECIFIC REQUIREMENTS.
 - REFER TO OUTDOOR AIR SCHEDULE FOR REQUIRED CFM AND DUCT RUN-OUT SIZE FOR ALL OUTSIDE AIR DUCTWORK ROUTED TO AC UNITS.
 - MAINTAIN MANUFACTURERS RECOMMENDED SERVICE CLEARANCE FOR ALL VAV BOXES. REFER TO DETAIL ON SHEET M600 FOR ADDITIONAL INFORMATION.

- KEYNOTES**
- PROVIDE 12" DEEP PLENUM FULL SIZE OF LOUVER. INTERNALLY LINE PLENUM WITH 1/2" ELASTOMERIC INSULATION. PROVIDE EXPANDED THROAT TAP AT PLENUM CONNECTION.
 - PROVIDE NEOPRENE VIBRATION ISOLATION HANGING/SUPPORT KIT WITH FAN. TRANSITION TO FAN OPENING AS REQUIRED. USE FLEXIBLE CANVAS CONNECTORS AT THE INLET AND OUTLET OF THE FAN.
 - PROVIDE 16"x8" SHEET METAL SLEEVE IN WALL ABOVE CEILING FOR EXHAUST AIR PATH. EXTEND SLEEVE 6" ON BOTH SIDE OF WALL.
 - MOUNT BOTTOM OF ELECTRIC HEATER 18" AFF EXPOSED ROUND DUCTWORK TO BE DOUBLE WALL AND PAINTED. ALL STRUCTURAL BRACING / HANGERS FOR DUCTWORK TO BE PAINTED TO MATCH ADJACENT SURFACES.
 - DIFFUSERS SHALL BE INSTALLED AT A 45 DEGREE ANGLE TOWARDS THE FLOOR. REFER TO THE DETAIL ON SHEET M600 FOR ADDITIONAL DETAILS.
 - DISCHARGE 8" ROUND DUCT TO ABOVE ADJACENT CEILING.
 - MOUNT BOTTOM OF AC UNIT 9'-0" AFF.
 - ROUTE EA DISCHARGE OUT EXTERIOR WALL AND TERMINATE WITH WALL CAP.
 - DUCTWORK UP TO FLOOR ABOVE. REFER TO SHEET M118 FOR CONTINUATION.
 - 12" MAKE-UP AIR DUCT DOWN INTO SPACE BEHIND DRYERS. DUCT SHALL TERMINATE IN OPEN SERVICE SPACE BEHIND DRYER. PROVIDE MOTORIZED SHUT-OFF DAMPERS IN MAKE-UP AIR DUCT.
 - MOUNT TEMPERATURE CONTROL PANEL 4'-0" AFF. COORDINATE POWER AND DATA WITH ELECTRICAL CONTRACTOR.
 - MOUNT SIDEWALL GRILLE IN FACE OF SOFFIT. CENTER LINE OF GRILLE TO BE AT 8'-10" AFF.
 - ROUTE DRYER 8" EXHAUST UP AND CONNECT TO MAIN AT 45 DEGREES. REFER TO MANUFACTURER INSTALLATION REQUIREMENTS FOR MORE INFORMATION.

DIFFUSER	DUCT SIZE	DIFFUSER	DUCT SIZE	GRILLE	DUCT SIZE
S-1	8"	R-1	6"	E-1	6"
S-2	8"	R-2	8"	E-2	8"
S-3	10"	R-3	10"	E-3	10"
S-4	12"	R-4	12"	E-4	12"
S-5	36x4	R-5	14"	E-5	14"
S-6	10"	R-6	22x22	E-6	22x22
S-7	24"	R-7	16x8	E-7	10x4
S-8	10x12"	R-8	36x12	E-8	16x8
S-9	10x4	R-9	8"	E-9	36x12
S-10	12x8	R-10	8"	E-10	8"
S-11	16x8	R-11	12"	E-11	8"
S-12	20x10	R-12	14"	E-12	10"
S-13	8"			E-13	14"
S-14	8"				
S-15	8"				
S-16	10"				
S-17	12"				

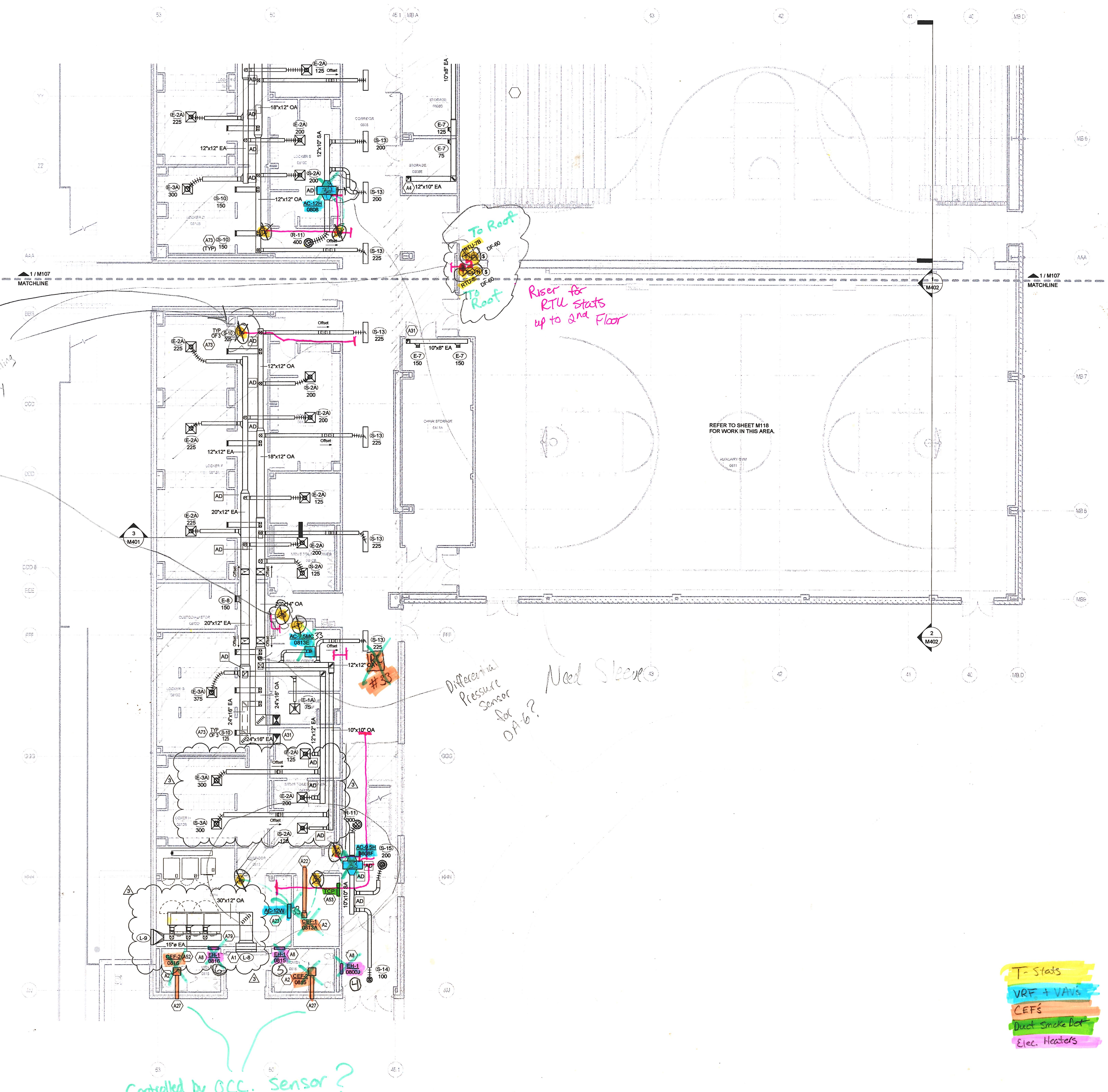
UNIT	AIRFLOW	DUCT SIZE	UNIT	AIRFLOW	DUCT SIZE
AC-7.5MC 0809E	25	6"	AC-9.5MC 1810	150	8"
AC-19C 0809A	175	8"	AC-12MC 1811	150	8"
AC-7.5MC 0813E	25	6"	AC-9.5MC 1812	100	8"
AC-7.5MC 1808	25	6"	AC-9.5MC 1813	100	8"



ISSUES AND REVISIONS

NO.	SUBMITTAL	DATE
100%	CONSTRUCTION DOCUMENTS	03.17.17
3	ADDENDUM #3	05.04.17

FLOOR PLAN LEVEL 0
AREA H - AIR
DISTRIBUTION



TS for OA-6
Extend pvc into drop ceiling hallway

To Roof
To Roof
Riser for RTU starts up to 2nd floor

Differential Pressure Sensor for OA-6? Need Sleeve

T-Stats
VRF + VAVs
CEFS
Duct Smoke Box
Elec. Heaters

Controlled by OCC. sensor?

1 LEVEL 0 - AIR DISTRIBUTION - AREA H
1/8" = 1'-0"

PROJECT: 2016-0005 - PAUL VI CATHOLIC HIGH SCHOOL - AIR DISTRIBUTION - AREA H - LEVEL 0