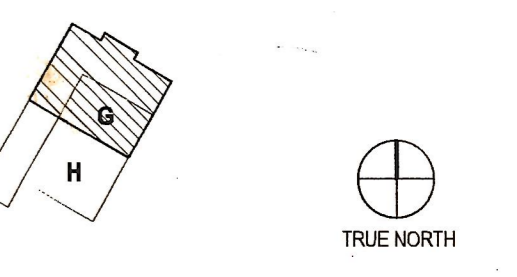
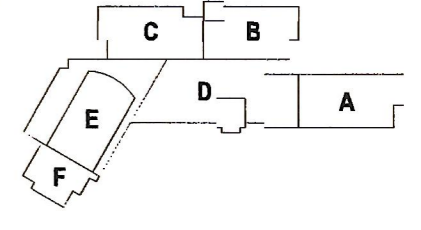


Checked By DRH  
Drawn By CMG



ISSUES AND REVISIONS  
NO. SUBMITTAL 100% CONSTRUCTION DOCUMENTS DATE 03.17.17

**FLOOR PLAN LEVEL 1  
AREA G - AIR  
DISTRIBUTION**

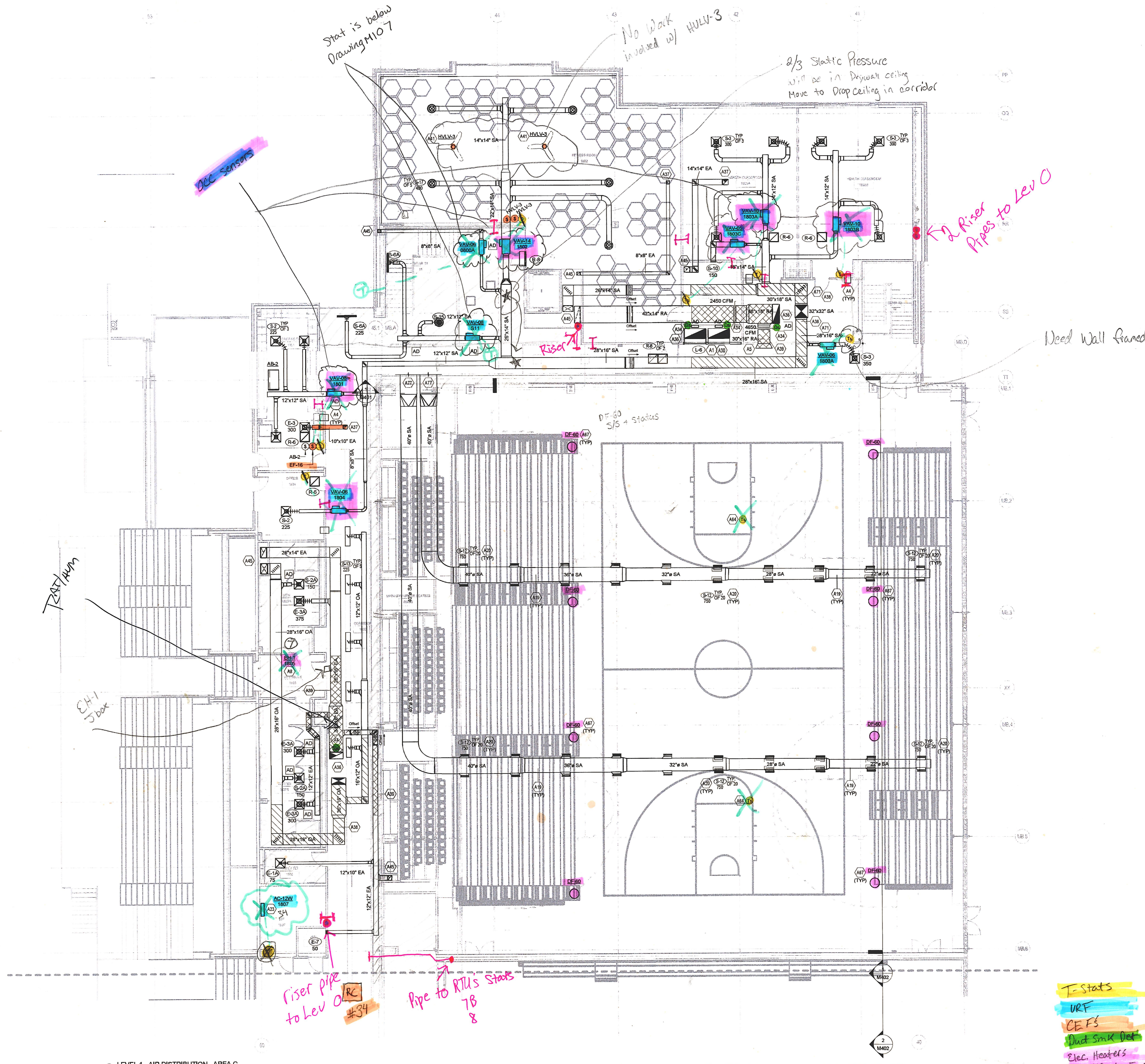
- GENERAL NOTES- AIR DISTRIBUTION**
- CONTRACTOR RESPONSIBLE FOR LOCATING ALL HORIZONTAL UNITS CONCEALED ABOVE THE CEILING SO THAT ALL REQUIRED CLEARANCES ARE MAINTAINED AND COORDINATED WITH ALL TRADES. REFER TO INSTALLATION DETAILS ON SHEET M601. PROVIDE ACCESS DOOR IF REQUIRED.
  - CONTRACTOR RESPONSIBLE FOR LOCATING ALL DAMPERS IN DUCTWORK SO THAT ACCESSIBILITY IS MAINTAINED. COORDINATE WITH CEILING SYSTEM. PROVIDE ACCESS DOOR IF REQUIRED.
  - PROVIDE A HIGH EFFICIENCY TAKE-OFF AND VOLUME DAMPER AT EACH GRILLE, REGISTER, AND DIFFUSER BRANCH RUNOUT. REFER TO THE DETAIL ON SHEET M600 FOR SPECIFIC REQUIREMENTS.
  - NO DUCTWORK TO BE ROUTED OVER ELECTRICAL PANELS/TRANSFORMERS. REFER TO ELECTRICAL PLANS FOR EQUIPMENT LOCATIONS.
  - REFER TO VERTICAL UNIT INSTALLATION DETAIL ON SHEET M601 FOR SPECIFIC REQUIREMENTS.
  - REFER TO EXHAUST RETURN AIR CANOPY DETAIL ON SHEET M600 FOR ADDITIONAL INFORMATION FOR E-6-R-6 GRILLES.
  - REFER TO CEILING CASSETTE INSTALLATION DETAIL ON SHEET M601 FOR SPECIFIC REQUIREMENTS.
  - REFER TO OUTDOOR AIR SCHEDULE FOR REQUIRED CFM AND DUCT RUN-OUT SIZE FOR ALL OUTSIDE AIR DUCTWORK ROUTED TO AC UNITS.
  - MAINTAIN MANUFACTURERS RECOMMENDED SERVICE CLEARANCE FOR ALL VAV BOXES. REFER TO DETAIL ON SHEET M600 FOR ADDITIONAL INFORMATION.

- KEYNOTES**
- PROVIDE 12" DEEP PLENUM FULL SIZE OF LOUVER. INTERNALLY LINE PLENUM WITH 1/2" ELASTOMERIC INSULATION. PROVIDE EXPANDED THROAT TAP AT PLENUM CONNECTION.
  - PROVIDE 18"x18" SHEET METAL SLEEVE IN WALL ABOVE CEILING FOR EXHAUST AIR PATH. EXTEND SLEEVE 6" ON BOTH SIDE OF WALL.
  - PROVIDE A 1/2" MESH SCREEN ON DUCT OPENING. PROVIDE EXPANDED THROAT TAP AT END OF DUCT RUN.
  - MOUNT BOTTOM OF ELECTRIC HEATER 18" AFF.
  - EXPOSED ROUND DUCTWORK TO BE DOUBLE WALL AND PAINTED. ALL STRUCTURAL BRACING / HANGERS FOR DUCTWORK TO BE PAINTED TO MATCH ADJACENT SURFACES.
  - DIFFUSERS SHALL BE INSTALLED AT A 45 DEGREE ANGLE TOWARDS THE FLOOR. REFER TO THE DETAIL ON SHEET M600 FOR ADDITIONAL DETAILS.
  - DUCTWORK UP TO ROOFTOP UNIT 9'-0" AFF.
  - MOUNT BOTTOM OF LOUVER 18" AFF.
  - DUCT MOUNTED SMOKE DETECTOR. COORDINATE INSTALLATION WITH ELECTRIC CONTRACTOR.
  - DUCTWORK UP TO ROOFTOP UNIT. TRANSITION TO UNIT OPENING AS REQUIRED.
  - DUCTWORK UP TO EXHAUST FAN ON ROOF. TRANSITION TO FAN OPENING AS REQUIRED.
  - PROVIDE ACOUSTICAL WRAP ON 25' OF DUCTWORK INDICATED (HATCH PATTERN). REFER TO SPECIFICATIONS FOR ADDITIONAL INFORMATION.
  - INTERNALLY LINE 25' OF DUCTWORK INDICATED (HATCH PATTERN) WITH 1/2" ELASTOMERIC INSULATION.
  - PROVIDE A MINIMUM OF 2'-0" CLEARANCE FROM BLADES TO STRUCTURE/CEILING AND LIGHTS. COORDINATE WITH LIGHTING LAYOUT. INCLUDE MISCELLANEOUS STEEL UNISTRUT TO INSTALL FANS. PAINT STEEL TO MATCH ADJACENT SURFACES. REFER TO MANUFACTURERS INSTALLATION INSTRUCTIONS FOR ADDITIONAL REQUIREMENTS.
  - DUCTWORK DOWN TO FLOOR BELOW. REFER TO SHEET M107 FOR CONTINUATION.
  - MOUNT TEMPERATURE SENSOR FOR DESTRATIFICATION FANS AT BOTTOM OF JOISTS.
  - MOUNT BOTTOM OF DESTRATIFICATION FANS AT BOTTOM OF TRUSS ELEVATION. PROVIDE MISCELLANEOUS STEEL UNISTRUT TO INSTALL FANS. PAINT STEEL TO MATCH ADJACENT SURFACES. REFER TO MANUFACTURERS INSTRUCTIONS FOR ADDITIONAL INFORMATION.
  - DUCTWORK TO BE ROUTED BETWEEN JOISTS WEBBING. COORDINATE WITH STRUCTURAL DRAWINGS.
  - DUCTWORK CONTINUES TO ROOFTOP UNIT. TRANSITION TO OPENING OF ROOFTOP UNIT AS REQUIRED. REFER TO SHEET M507 FOR CONTINUATION OF DUCTWORK.

DIFFUSER	DUCT SIZE	DIFFUSER	DUCT SIZE	GRILLE	DUCT SIZE
S-1	6"	R-1	6"	E-1	6"
S-2	8"	R-2	8"	E-2	8"
S-3	10"	R-3	10"	E-3	10"
S-4	12"	R-4	12"	E-4	12"
S-5	36x4	R-5	14"	E-5	14"
S-6	10"	R-6	22x22	E-6	22x22
S-7	24x6	R-7	16x8	E-7	10x4
S-8	10x12"	R-8	36x12	E-8	16x8
S-9	10x4	R-9	8"	E-9	36x12
S-10	12x6	R-10	8"	E-10	8"
S-11	16x8	R-11	12"	E-11	8"
S-12	8"	R-12	14"	E-12	10"
S-13	8"			E-13	14"
S-14	8"				
S-15	8"				
S-16	10"				
S-17	12"				

UNIT	AIRFLOW	DUCT SIZE	UNIT	AIRFLOW	DUCT SIZE
AC-7.5MC 0809E	25	6"	AC-8.5MC 1810	150	8"
AC-18C 0808A	175	8"	AC-12MC 1811	150	8"
AC-7.5MC 0813E	25	6"	AC-8.5MC 1812	100	8"
AC-7.5MC 1806	25	6"	AC-8.5MC 1813	100	8"

TAG	DUCT SIZE	TAG	DUCT SIZE
VAV-05	5"	VAV-10	10"
VAV-08	8"	VAV-12	12"
VAV-08	8"	VAV-14	14"



**I-Stats**  
**URF**  
**CEFS**  
**Duct Smk Det**  
**Elec. Heaters**  
**De-stratification Fans**