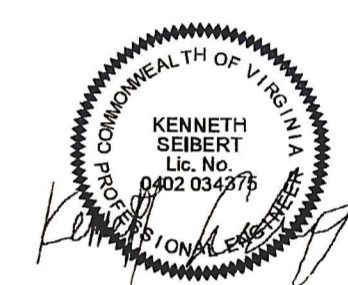


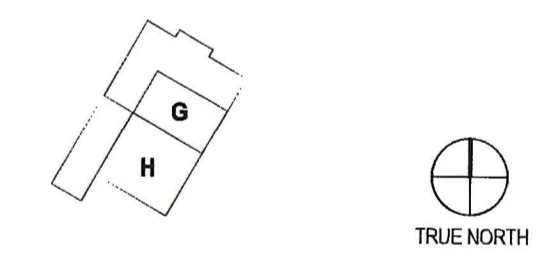
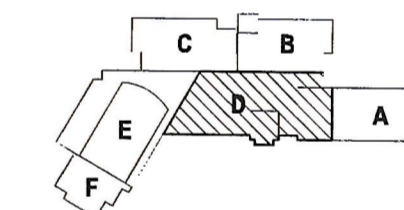
PAUL VI CATHOLIC HIGH SCHOOL

CATHOLIC DIOCESE OF ARLINGTON
200 North Glebe Road
Arlington, VA 22203
Loudoun County ZCPA Number
VMDO Project Number

2016-0005
15.1188



Checked By: DRH
Drawn By: CMG



ISSUES AND REVISIONS
NO. SUBMITTAL
100% CONSTRUCTION DOCUMENTS
DATE
03.17.17

FLOOR PLAN LEVEL 2 AREA D - AIR DISTRIBUTION

M124

GENERAL NOTES: AIR DISTRIBUTION

- CONTRACTOR RESPONSIBLE FOR LOCATING ALL HORIZONTAL UNITS CONCEALED ABOVE THE CEILING SO THAT ALL REQUIRED CLEARANCES ARE MAINTAINED AND COORDINATED WITH ALL TRADES. REFER TO INSTALLATION DETAILS ON SHEET M601. PROVIDE ACCESS DOOR IF REQUIRED.
- CONTRACTOR RESPONSIBLE FOR LOCATING ALL DAMPERS IN DUCTWORK SO THAT ACCESSIBILITY IS MAINTAINED. COORDINATE WITH CEILING SYSTEM. PROVIDE ACCESS DOOR IF REQUIRED.
- PROVIDE A HIGH EFFICIENCY TAKE-OFF AND VOLUME DAMPER AT EACH GRILLE, REGISTER, AND DIFFUSER BRANCH RUNOUT. REFER TO THE DETAIL ON SHEET M600 FOR SPECIFIC REQUIREMENTS.
- NO DUCTWORK TO BE ROUTED OVER ELECTRICAL PANELS/TRANSFORMERS. REFER TO ELECTRICAL PLANS FOR EQUIPMENT LOCATIONS.
- REFER TO VERTICAL UNIT INSTALLATION DETAIL ON SHEET M601 FOR SPECIFIC REQUIREMENTS.
- REFER TO EXHAUST/RETURN AIR CANOPY DETAIL ON SHEET M600 FOR ADDITIONAL INFORMATION FOR E-6/R-6 GRILLES.
- REFER TO CEILING CASSETTE INSTALLATION DETAIL ON SHEET M601 FOR SPECIFIC REQUIREMENTS.
- REFER TO OUTDOOR AIR SCHEDULE FOR REQUIRED CFM AND DUCT RUNOUT SIZE FOR ALL OUTSIDE AIR DUCTWORK ROUTED TO AC UNITS.
- MAINTAIN MANUFACTURERS RECOMMENDED SERVICE CLEARANCE FOR ALL VAV BOXES. REFER TO DETAIL ON SHEET M600 FOR ADDITIONAL INFORMATION.

KEYNOTES

- PROVIDE 16"x8" SHEET METAL SLEEVE IN WALL ABOVE CEILING FOR EXHAUST AIR PATH. EXTEND SLEEVE 6" ON BOTH SIDE OF WALL.
- DUCT MOUNTED SMOKE DETECTOR. COORDINATE INSTALLATION WITH ELECTRIC CONTRACTOR.
- DUCTWORK UP TO ROOFTOP UNIT. TRANSITION TO UNIT OPENING AS REQUIRED.
- PROVIDE ACOUSTICAL WRAP ON 25' OF DUCTWORK INDICATED (HATCH PATTERN). REFER TO SPECIFICATIONS FOR ADDITIONAL INFORMATION.
- INTERNALLY LINE 25' OF DUCTWORK INDICATED (HATCH PATTERN) WITH 1/2" ELASTOMERIC INSULATION.
- PROVIDE A MINIMUM OF 2" CLEARANCE FROM BLADES TO STRUCTURE/CEILING AND LIGHTS. COORDINATE WITH LIGHTING LAYOUT. INCLUDE MISCELLANEOUS STEEL/STRUCTURE TO INSTALL FANS. PAINT STEEL TO MATCH ADJACENT SURFACES. REFER TO MANUFACTURER'S INSTALLATION INSTRUCTIONS FOR ADDITIONAL REQUIREMENTS.
- EXPOSED DUCTWORK TO HAVE CANVAS JACKET AND PAINTED. ALL STRUCTURAL BRACING / HANGERS FOR DUCTWORK TO BE PAINTED TO MATCH ADJACENT SURFACES.
- DUCTWORK ROUTED DOWN IN CHASE. REFER TO SHEET M114 FOR CONTINUATION.

GRD RUNOUT SCHEDULE

DIFFUSER	DUCT SIZE	DIFFUSER	DUCT SIZE	GRILLE	DUCT SIZE
S-1	6"e	R-1	6"e	E-1	6"e
S-2	8"e	R-2	8"e	E-2	8"e
S-3	10"e	R-3	10"e	E-3	10"e
S-4	12"e	R-4	12"e	E-4	12"e
S-5	36x4	R-5	14"e	E-5	14"e
S-6	10"e	R-6	22x22	E-6	22x22
S-7	24x6	R-7	16x6	E-7	10x4
S-8	10x12"e	R-8	36x12	E-8	16x8
S-9	10x4	R-9	8"e	E-9	36x12
S-10	12x6	R-10	8"e	E-10	8"e
S-11	16x8	R-11	12"e	E-11	8"e
S-12	20x10	R-12	14"e	E-12	10"e
S-13	8"e			E-13	14"e
S-14	8"e				
S-15	8"e				
S-16	10"e				
S-17	12"e				

CASSETTE OA RUNOUT SCHEDULE

UNIT	AIRFLOW	DUCT SIZE	UNIT	AIRFLOW	DUCT SIZE
AC-7.5MC 0400	25	6"e	AC-9.5MC 1304C	25	6"e
AC-7.5MC 0411	25	6"e	AC-12MC 1808	25	6"e
AC-7.5MC 0622B	25	6"e	AC-12MC 1810	25	6"e
AC-7.5MC 0609E	50	6"e	AC-18MC 1811	25	6"e
AC-12MC 0813E	25	6"e	AC-18MC 1813	125	8"e
AC-7.5MC 1304A	25	6"e	AC-12MC 2307A	25	6"e
AC-18MC 1304B	75	6"e			

HORIZONTAL OA RUNOUT SCHEDULE

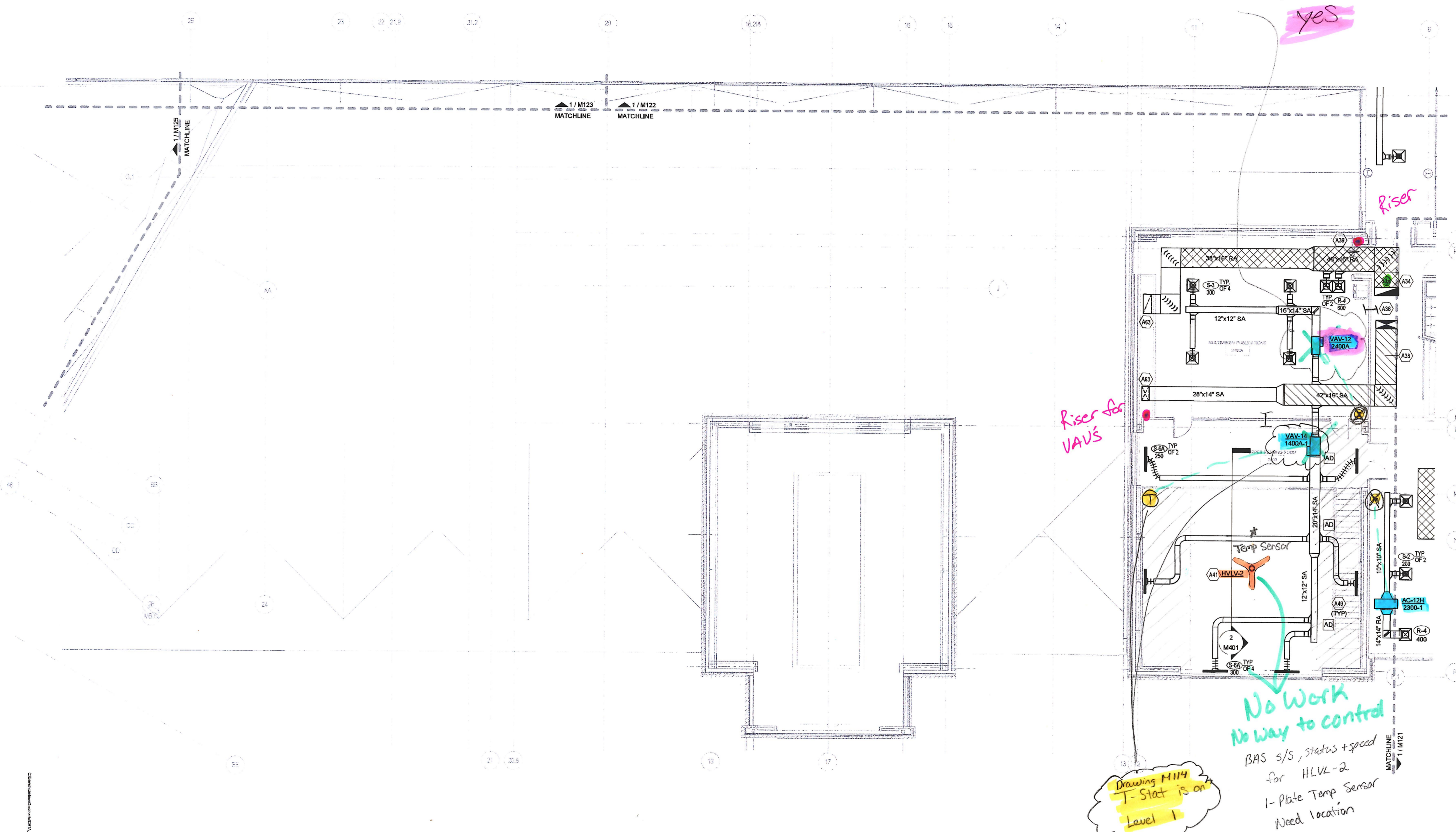
UNIT	AIRFLOW	DUCT SIZE	UNIT	AIRFLOW	DUCT SIZE
AC-12H 0304	100	6"e	AC-12H 1302	125	8"e
AC-24H 0501	50	6"e	AC-18H 1410	175	8"e
AC-12H 0602	50	6"e	AC-18H 1512	150	8"e
AC-24H 0709	100	6"e	AC-36H 1601	100	6"e
AC-12H 1108	50	6"e	AC-36H 1701A	75	6"e
AC-12H 1114	50	6"e	AC-6.5H 1703	75	6"e
AC-6.5H 1118	50	6"e	AC-12H 2302	125	8"e
AC-6.5H 1261	100	6"e	AC-36H 2302	350	10"e

VERTICAL OA RUNOUT SCHEDULE

UNIT	AIRFLOW	DUCT SIZE	UNIT	AIRFLOW	DUCT SIZE
AC-36V 0707	400	10x10	AC-18V 1216	100	6"e
AC-24V 1101	100	10"e	AC-18V 1221	150	8"e
AC-12V 1108	150	8"e	AC-24V 1222	300	10"e
AC-18V 1120	100	6"e	AC-18V 1241	150	8"e
AC-12V 1200	125	8"e	AC-18V 1253	175	8"e
AC-18V 1203	150	8"e	AC-6.5V 1701	750	12"x12"
AC-18V 1208	125	8"e			

VAV DUCT RUNOUT SCHEDULE

TAG	DUCT SIZE	TAG	DUCT SIZE
VAV-05	6"e	VAV-10	10"e
VAV-08	8"e	VAV-12	12"e
VAV-08	8"e	VAV-14	14"e



LEVEL 2 - AIR DISTRIBUTION - AREA D
1/8" = 1'-0"