

- GENERAL NOTES: AIR DISTRIBUTION**
- CONTRACTOR RESPONSIBLE FOR LOCATING ALL HORIZONTAL UNITS CONCEALED ABOVE THE CEILING SO THAT ALL REQUIRED CLEARANCES ARE MAINTAINED AND COORDINATED WITH ALL TRADES. REFER TO INSTALLATION DETAILS ON SHEET M601. PROVIDE ACCESS DOOR IF REQUIRED.
  - CONTRACTOR RESPONSIBLE FOR LOCATING ALL DAMPERS IN DUCTWORK SO THAT ACCESSIBILITY IS MAINTAINED. COORDINATE WITH CEILING SYSTEM. PROVIDE ACCESS DOOR IF REQUIRED.
  - PROVIDE A HIGH EFFICIENCY TAKE-OFF AND VOLUME DAMPER AT EACH GRILLE, REGISTER, AND DIFFUSER BRANCH RUNOUT. REFER TO THE DETAIL ON SHEET M600 FOR SPECIFIC REQUIREMENTS.
  - NO DUCTWORK TO BE ROUTED OVER ELECTRICAL PANELS/TRANSFORMERS. REFER TO ELECTRICAL PLANS FOR EQUIPMENT LOCATIONS.
  - REFER TO VERTICAL UNIT INSTALLATION DETAIL ON SHEET M601 FOR SPECIFIC REQUIREMENTS.
  - REFER TO EXHAUST/RETURN AIR CANOPY DETAIL ON SHEET M600 FOR ADDITIONAL INFORMATION FOR E-6/R-6 GRILLES.
  - REFER TO CEILING CASSETTE INSTALLATION DETAIL ON SHEET M601 FOR SPECIFIC REQUIREMENTS.
  - REFER TO OUTDOOR AIR SCHEDULE FOR REQUIRED CFM AND DUCT RUN-OUT SIZE FOR ALL OUTSIDE AIR DUCTWORK ROUTED TO AC UNITS.
  - MAINTAIN MANUFACTURERS RECOMMENDED SERVICE CLEARANCE FOR ALL VAV BOXES. REFER TO DETAIL ON SHEET M600 FOR ADDITIONAL INFORMATION.

- KEYNOTES**
- EXPOSED ROUND DUCTWORK TO BE DOUBLE WALL AND PAINTED. ALL STRUCTURAL BRACING / HANGERS FOR DUCTWORK TO BE PAINTED TO MATCH ADJACENT SURFACES.
  - DIFFUSERS SHALL BE INSTALLED AT A 45 DEGREE ANGLE TOWARDS THE FLOOR. REFER TO THE DETAIL ON SHEET M600 FOR ADDITIONAL DETAILS.
  - DUCT MOUNTED SMOKE DETECTOR. COORDINATE INSTALLATION WITH ELECTRIC CONTRACTOR.
  - EXPOSED DUCTWORK TO HAVE CANVAS JACKET AND PAINTED. ALL STRUCTURAL BRACING / HANGERS FOR DUCTWORK TO BE PAINTED TO MATCH ADJACENT SURFACES.
  - PROVIDE PAINT GRIP DUCTWORK TO ALLOW ALL EXPOSED DUCTWORK TO BE PAINTED. ALL STRUCTURAL BRACING / HANGERS FOR DUCTWORK TO BE PAINTED TO MATCH ADJACENT SURFACES.
  - RETURN AIR DUCTWORK ROUTED DOWN IN CHASE. REFER TO SHEET M115 FOR CONTINUATION. PROVIDE BALANCE DAMPER AT TAKE-OFF.
  - INSTALL DOUBLE WALLED DUCTWORK FOR ALL TAKE-OFF BRANCHES IN AUDITORIUM.
  - SUPPLY AIR MAIN TO BE INSTALLED ABOVE RETURN AIR MAIN. MAINTAIN 6" CLEARANCE BETWEEN SIDES OF DUCTWORK AND AUDITORIUM WALL.
  - COORDINATE DIFFUSER LOCATIONS AND ELEVATIONS WITH ACoustICAL PANELS AND LIGHTS. TYP.
  - DUCTWORK CONTINUES TO ROOFTOP UNIT. TRANSITION TO OPENING OF ROOFTOP UNIT AS REQUIRED. REFER TO SHEET M605 FOR CONTINUATION OF DUCTWORK.
  - STACKED SUPPLY AND RETURN DUCTWORK. INTERNALLY LINE RETURN DUCTWORK AS INDICATED (HATCH PATTERN) WITH 1/2" ELASTOMERIC INSULATION. PROVIDE ACoustICAL WRAP ON SUPPLY DUCTWORK AS INDICATED (HATCH PATTERN). REFER TO SPECIFICATIONS FOR ADDITIONAL INFORMATION.
  - SMOKE VENT ON ROOF. PROVIDE ACoustICALLY RATED BICO DOUBLE LEAF FIRE VENTS - MODEL AC581722 (ACCEPTABLE ALTERNATE MANUFACTURERS ARE NYSFORM OR MILCOR). VENT TO BE OPERATED BY THERMOLATCH MECHANISM MANUALLY AT STAGGE LEVEL OR BY HEAT AT 165 DEGREE FUSIBLE LINK. COORDINATE OPENING WITH ROOF STRUCTURE SO THAT OPENING IS BETWEEN JOIST. REFER TO STRUCTURAL PLANS FOR DETAILS. PROVIDE SMOKE VENTS WITH SECURITY BARS WELDED IN THE CURB.

**GRD RUNOUT SCHEDULE**

DIFFUSER	DUCT SIZE	DIFFUSER	DUCT SIZE	GRILLE	DUCT SIZE
S-1	6"e	R-1	6"e	E-1	6"e
S-2	8"e	R-2	8"e	E-2	8"e
S-3	10"e	R-3	10"e	E-3	10"e
S-4	12"e	R-4	12"e	E-4	12"e
S-5	36x4	R-5	14"e	E-5	14"e
S-6	10"e	R-6	22x22	E-6	22x22
S-7	24x6	R-7	18x8	E-7	10x4
S-8	10/12"e	R-8	36x12	E-8	18x8
S-9	10x4	R-9	8"e	E-9	36x12
S-10	12x6	R-10	8"e	E-10	8"e
S-11	18x8	R-11	12"e	E-11	8"e
S-12	20x10	R-12	14"e	E-12	10"e
S-13	8"e			E-13	14"e
S-14	8"e				
S-15	8"e				
S-16	10"e				
S-17	12"e				

**CASSETTE OA RUNOUT SCHEDULE**

UNIT	AIRFLOW	DUCT SIZE	UNIT	AIRFLOW	DUCT SIZE
AC-7.5MC 0400	25	6"e	AC-8.5MC 1304C	25	6"e
AC-7.5MC 0411	25	6"e	AC-12MC 1808	25	6"e
AC-7.5MC 0622B	25	6"e	AC-12MC 1810	25	6"e
AC-7.5MC 0809E	50	6"e	AC-18MC 1811	25	6"e
AC-7.5MC 0813E	25	6"e	AC-18MC 1813	125	8"e
AC-7.5MC 1304A	25	6"e	AC-12MC 2307A	25	6"e
AC-18MC 1304B	75	8"e			

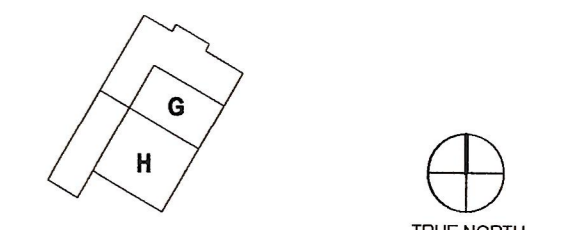
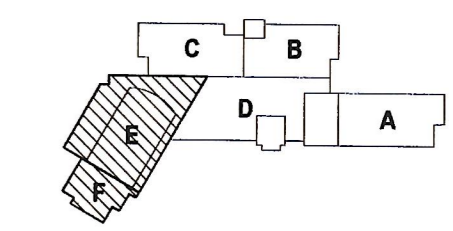
**HORIZONTAL OA RUNOUT SCHEDULE**

UNIT	AIRFLOW	DUCT SIZE	UNIT	AIRFLOW	DUCT SIZE
AC-12H 0304	100	8"e	AC-12H 1302	125	8"e
AC-24H 0501	50	6"e	AC-18H 1410	175	8"e
AC-12H 0602	50	6"e	AC-18H 1512	150	8"e
AC-24H 0700	100	6"e	AC-36H 1601	100	6"e
AC-12H 1108	50	6"e	AC-36H 1701A	75	6"e
AC-12H 1114	50	6"e	AC-9.5H 1703	75	6"e
AC-9.5H 1118	50	6"e	AC-12H 2302	125	8"e
AC-9.5H 1281	100	8"e	AC-36H 3202	350	10"e

**VERTICAL OA RUNOUT SCHEDULE**

UNIT	AIRFLOW	DUCT SIZE	UNIT	AIRFLOW	DUCT SIZE
AC-36V 0707	400	10x10	AC-18V 1216	100	6"e
AC-24V 1101	100	10"e	AC-18V 1221	150	8"e
AC-12V 1109	150	8"e	AC-24V 1222	300	10"e
AC-18V 1120	100	6"e	AC-18V 1241	150	8"e
AC-12V 1200	125	8"e	AC-18V 1253	175	8"e
AC-18V 1203	150	8"e	AC-54V 1701	750	12"x12"
AC-18V 1208	125	8"e			

Checked By: DRH  
Drawn By: CMG



ISSUES AND REVISIONS

NO.	SUBMITTAL	DATE
1	100% CONSTRUCTION DOCUMENTS	03.17.17
	ADDENDUM #1	03.31.17

FLOOR PLAN LEVEL 2  
AREA E/F - AIR  
DISTRIBUTION

T-Stats  
VRF  
CRFs  
Duct Smoke Det.  
Elec. Heaters