

1 ROOF PLAN AREA C - MECHANICAL  
1/8" = 1'-0"

**GENERAL NOTES: AIR DISTRIBUTION**

A. CONTRACTOR RESPONSIBLE FOR LOCATING ALL HORIZONTAL UNITS CONCEALED ABOVE THE CEILING SO THAT ALL REQUIRED CLEARANCES ARE MAINTAINED AND COORDINATED WITH ALL TRADES.

B. CONTRACTOR RESPONSIBLE FOR LOCATING ALL DAMPERS IN DUCTWORK SO THAT ACCESSIBILITY IS MAINTAINED. COORDINATE WITH CEILING SYSTEM.

C. PROVIDE A HIGH EFFICIENCY TAKE-OFF AND VOLUME DAMPER AT EACH GRILLE, REGISTER, AND DIFFUSER BRANCH RUNOUT. REFER TO THE DETAIL ON SHEET M600 FOR SPECIFIC REQUIREMENTS.

D. NO DUCTWORK TO BE ROUTED OVER ELECTRICAL PANELS/TRANSFORMERS. REFER TO ELECTRICAL PLANS FOR EQUIPMENT LOCATIONS.

E. REFER TO VERTICAL UNIT INSTALLATION DETAIL ON SHEET M601 FOR SPECIFIC REQUIREMENTS.

F. REFER TO EXHAUST/RETURN AIR CANOPY DETAIL ON SHEET M600 FOR ADDITIONAL INFORMATION FOR E-6/R-6 GRILLES.

G. REFER TO CEILING CASSETTE INSTALLATION DETAIL ON SHEET M601 FOR SPECIFIC REQUIREMENTS. APPLIES TO 3'X3' CASSETTES.

**KEYNOTES**

R4 NEW CONDENSING UNIT MOUNTED ON A NEW ROOF CURB. REFER TO DETAIL ON SHEET M600.

R5 PROVIDE DUCT SUPPORTS 3'-0" ON CENTER. DUCT SUPPORTS SHALL BE COOPER, B-LINE, MODEL C-SERIES OR EQUAL.

R9 DUCTWORK DOWN TO FLOOR BELOW. REFER TO SHEET M133 FOR CONTINUATION.

**VMDO**

VMDO Architects  
200 E. Palace Street  
Charlottesville, VA 22907  
434.594.5484  
www.vmdo.com

**consulting engineers**

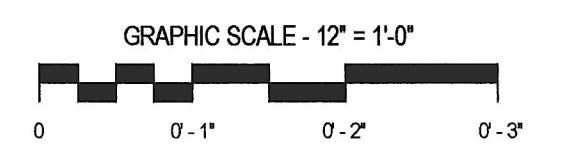
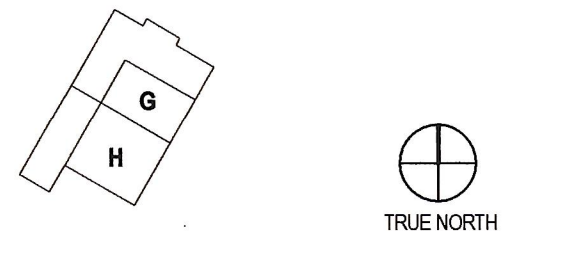
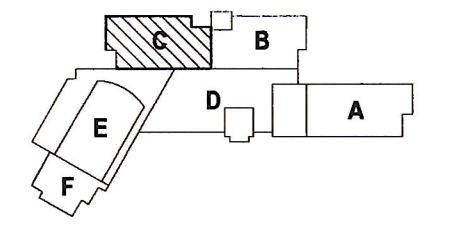
10411 Meeting Street  
Prospect, Kentucky 40059  
502.256.3905 • F 502.256.2691  
www.cmtaengr.com

**Catholic Diocese of Arlington**  
*Encouraging and nourishing faith*

**PAUL VI CATHOLIC HIGH SCHOOL**

CATHOLIC DIOCESE OF ARLINGTON  
200 North Glebe Road  
Arlington, VA 22203  
Loudoun County ZCPA Number 2016-XXXX  
VMDO Project Number 15.1188

Checked By DRH  
Drawn By CMG



**DRAWING NOT FOR CONSTRUCTION**

ISSUES AND REVISIONS

NO.	SUBMITTAL	DATE
1	PERMIT SET	01.31.17

**ROOF PLAN AREA C - MECHANICAL**

**M143**