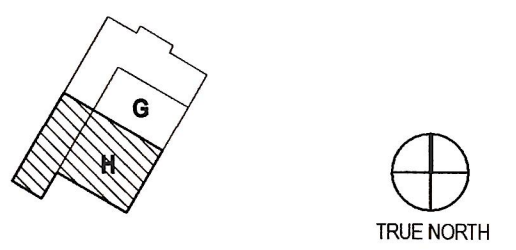
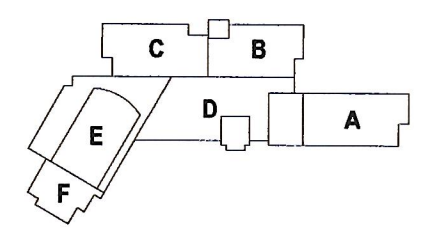




PAUL VI CATHOLIC HIGH SCHOOL

CATHOLIC DIOCESE OF ARLINGTON
200 North Glebe Road
Arlington, VA 22203
Loudoun County ZOPA Number 2016-XXXX
VMDO Project Number 15.1188

Checked By DRH
Drawn By CMG



GRAPHIC SCALE - 1/8" = 1'-0"

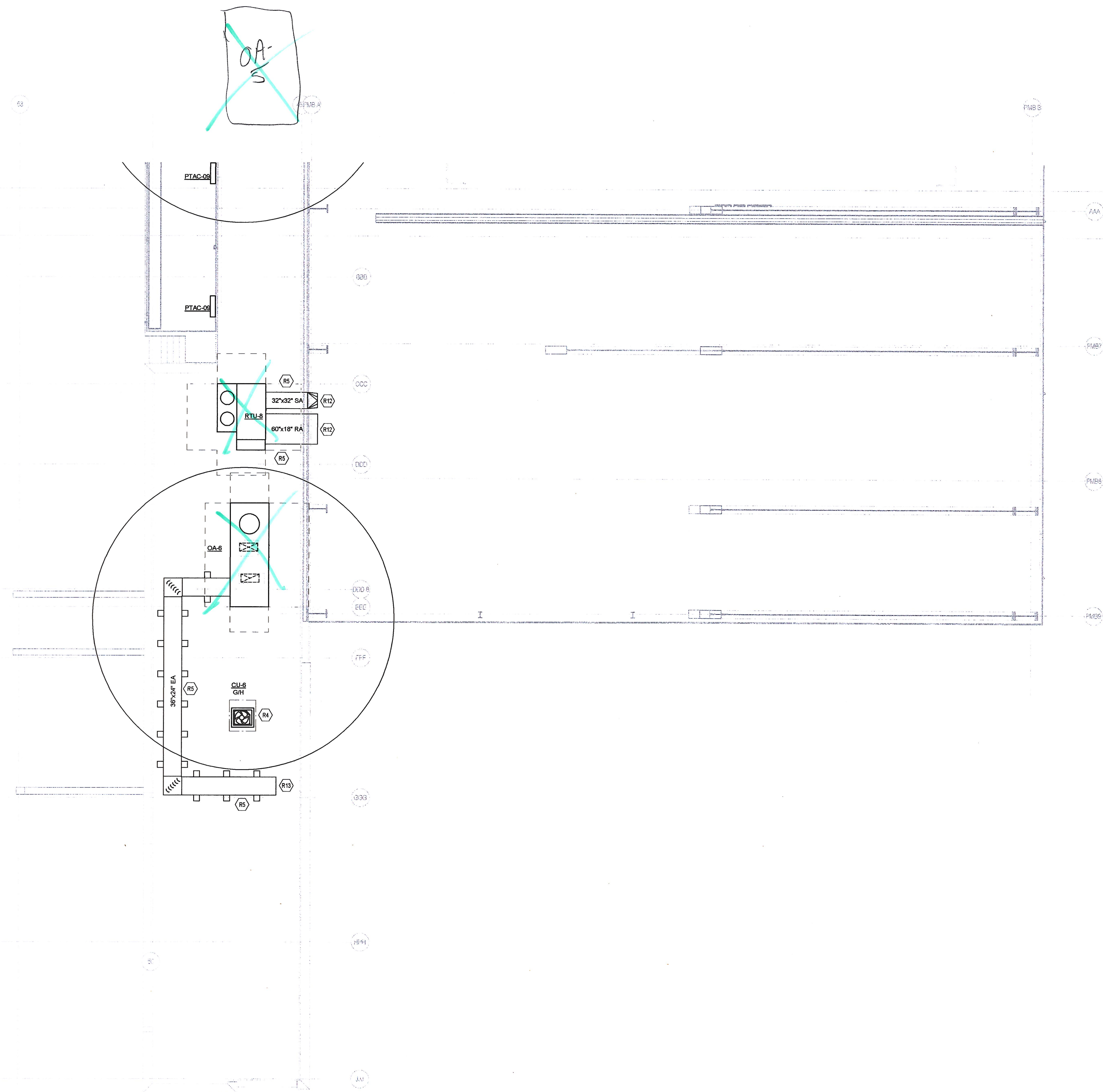
DRAWING NOT FOR CONSTRUCTION

ISSUES AND REVISIONS	
NO. SUBMITTAL	DATE
PERMIT SET	01.31.17

ROOF PLAN AREA H - MECHANICAL

- GENERAL NOTES: AIR DISTRIBUTION**
- A. CONTRACTOR RESPONSIBLE FOR LOCATING ALL HORIZONTAL UNITS CONCEALED ABOVE THE CEILING SO THAT ALL REQUIRED CLEARANCES ARE MAINTAINED AND COORDINATED WITH ALL TRADES.
 - B. CONTRACTOR RESPONSIBLE FOR LOCATING ALL DAMPERS IN DUCTWORK SO THAT ACCESSIBILITY IS MAINTAINED. COORDINATE WITH CEILING SYSTEM.
 - C. PROVIDE A HIGH EFFICIENCY TAKE-OFF AND VOLUME DAMPER AT EACH GRILLE, REGISTER, AND DIFFUSER BRANCH RUNOUT. REFER TO THE DETAIL ON SHEET M600 FOR SPECIFIC REQUIREMENTS.
 - D. NO DUCTWORK TO BE ROUTED OVER ELECTRICAL PANELS/TRANSFORMERS. REFER TO ELECTRICAL PLANS FOR EQUIPMENT LOCATIONS.
 - E. REFER TO VERTICAL UNIT INSTALLATION DETAIL ON SHEET M601 FOR SPECIFIC REQUIREMENTS.
 - F. REFER TO EXHAUST/RETURN AIR CANOPY DETAIL ON SHEET M600 FOR ADDITIONAL INFORMATION FOR E-6/R-6 GRILLES.
 - G. REFER TO CEILING CASSETTE INSTALLATION DETAIL ON SHEET M601 FOR SPECIFIC REQUIREMENTS. APPLIES TO 3'X3' CASSETTES.

- KEYNOTES**
- R4 NEW CONDENSING UNIT MOUNTED ON A NEW ROOF CURB. REFER TO DETAIL ON SHEET M600.
 - R5 PROVIDE DUCT SUPPORTS 5'-0" ON CENTER. DUCT SUPPORTS SHALL BE COOPER, B-LINE, MODEL C-SERIES OR EQUAL.
 - R12 DUCTWORK CONTINUES INTO GYMNASIUM. REFER TO SHEET M108 FOR CONTINUATION.
 - R13 DUCTWORK CONTINUES DOWN TO FLOOR BELOW. REFER TO SHEET M118 FOR CONTINUATION.



1 ROOF PLAN AREA H - MECHANICAL
1/8" = 1'-0"

PROJECT: 15.1188 - PAUL VI CATHOLIC HIGH SCHOOL

DATE: 01/31/17