

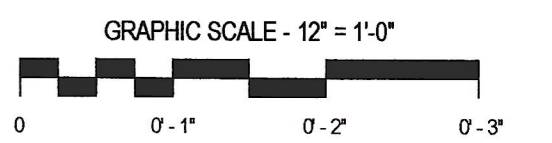
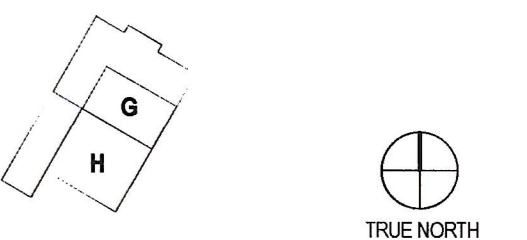
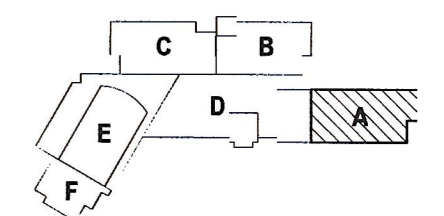


## PAUL VI CATHOLIC HIGH SCHOOL

CATHOLIC DIOCESE OF ARLINGTON  
200 North Glebe Road  
Arlington, VA 22203  
Loudoun County ZCPA Number 2016-0005  
VMDO Project Number 15.1188



Checked By DRH  
Drawn By CMG



ISSUES AND REVISIONS  
NO. SUBMITTAL 100% CONSTRUCTION DOCUMENTS  
DATE 03.17.17

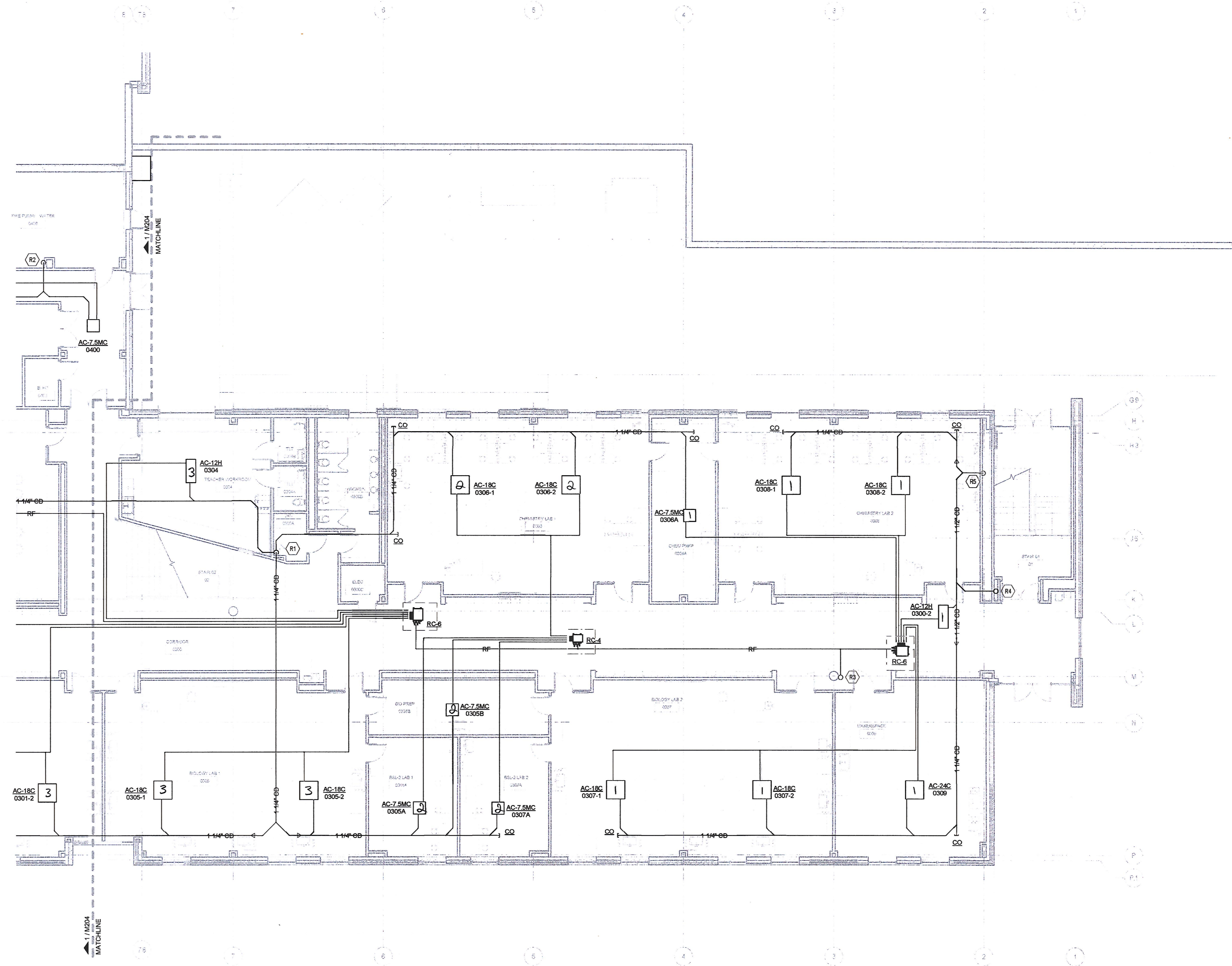
### FLOOR PLAN LEVEL 0 AREA A - VRF PIPING

# M201

- GENERAL NOTES - VRF PIPING**
- A. CONTRACTOR IS RESPONSIBLE FOR COORDINATING THE MOUNTING OF VRF CASSETTE UNITS WITH CEILING GRID. REFER TO ARCHITECTURAL DRAWINGS FOR CASSETTE MOUNTING DETAILS.
  - B. REFER TO CASSETTE PIPING SCHEMATIC ON SHEET M801 FOR INSTALLATION DETAILS.
  - C. REFER TO REFRIGERANT PIPING INSTALLATION DETAIL ON M801 FOR ADDITIONAL INFORMATION.
  - D. REFER TO MECHANICAL PIPING SCHEMATICS FOR ALL REFRIGERANT PIPE SIZES.
  - E. NO PIPING TO BE ROUTED OVER ELECTRICAL PANELS, TRANSFORMERS, IDF, AND MDF EQUIPMENT. REFER TO ELECTRICAL PLANS FOR EQUIPMENT LOCATIONS.

- KEYNOTES**
- R1 ROUTE CONDENSATE PIPING DOWN ALONG WALL AND SPILL TO MOP SINK.
  - R2 ROUTE CONDENSATE PIPING DOWN ALONG WALL AND SPILL TO NEAREST FLOOR DRAIN.
  - R3 REFRIGERANT PIPING ROUTED UP TO FLOOR ABOVE. REFER TO SHEET M211 FOR CONTINUATION.
  - R4 CONDENSATE PIPE ROUTED UP IN CHASE TO FLOOR ABOVE. REFER TO SHEET M211 FOR CONTINUATION.
  - R5 ROUTE CONDENSATE PIPING DOWN IN CHASE TO DRAIN BOX. INSTALL DRAIN BOX IN ACCESSIBLE LOCATION 18" ABOVE FINISHED FLOOR. CUT BACK OF CASEWORK AS REQUIRED FOR INSTALLATION. REFER TO PLUMBING DRAWINGS FOR ADDITIONAL INFORMATION.

CONDENSATE PIPE RUNOUT SCHEDULE			
TAG	PIPE SIZE	TAG	PIPE SIZE
AC-7.5MC	1"	AC-36H	1-1/4"
AC-9.5MC	1"	AC-12V	3/4"
AC-12MC	1"	AC-18V	3/4"
AC-18MC	1"	AC-24V	3/4"
AC-18C	1-1/4"	AC-36V	3/4"
AC-24C	1-1/4"	AC-54V	3/4"
AC-6.5H	1-1/4"	AC-7.5W	3/4"
AC-12H	1-1/4"	AC-12W	3/4"
AC-18H	1-1/4"	AC-24W	3/4"
AC-24H	1-1/4"		



① LEVEL 0 - PIPING - AREA A  
1/8" = 1'-0"

DRAWING IS THE PROPERTY OF VMDO ARCHITECTS

M201-1000