

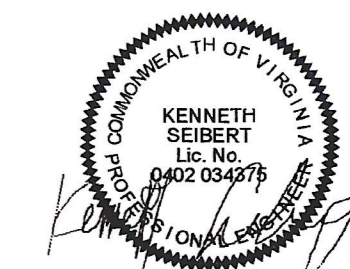


10411 Meeting Street  
Prospect, Kentucky 40059  
502.326.3685 • f 502.326.2691  
www.cmta.com

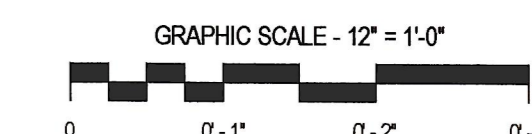
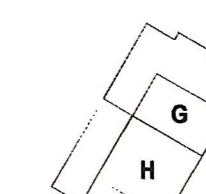
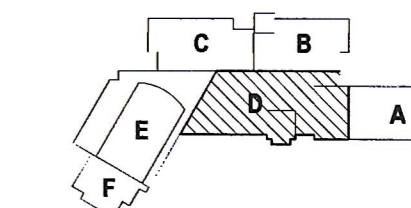


## PAUL VI CATHOLIC HIGH SCHOOL

CATHOLIC DIOCESE OF ARLINGTON  
200 North Glebe Road  
Arlington, VA 22203  
Loudoun County ZOPA Number 2016-0005  
VMDO Project Number 15.1188



Checked By DRH  
Drawn By CMG



ISSUES AND REVISIONS		DATE
NO. SUBMITTAL	100% CONSTRUCTION DOCUMENTS	03.17.17

FLOOR PLAN LEVEL 0  
AREA D - VRF PIPING

# M204

### GENERAL NOTES - VRF PIPING

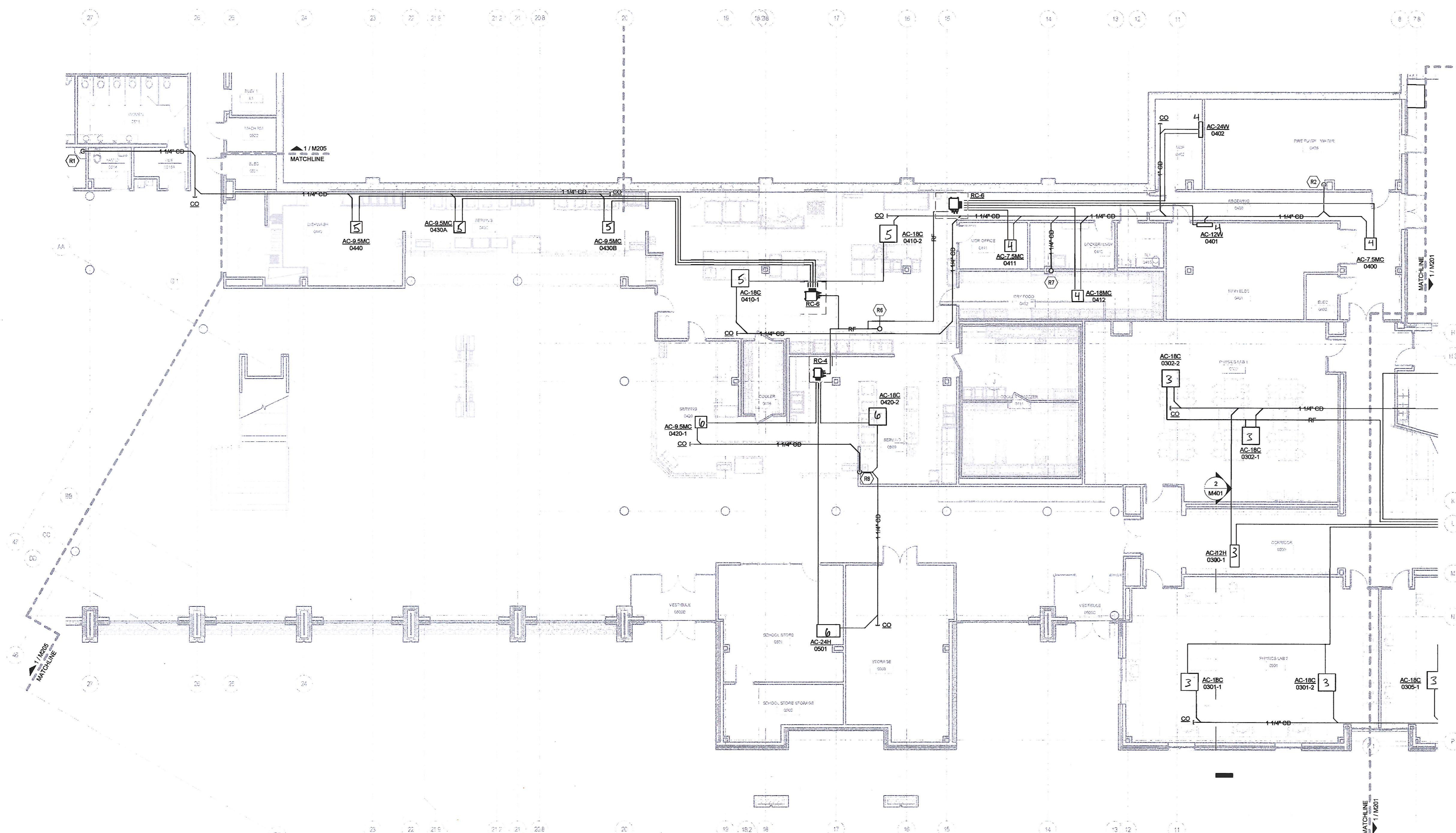
- CONTRACTOR IS RESPONSIBLE FOR COORDINATING THE MOUNTING OF VRF CASSETTE UNITS WITH CEILING GRID. REFER TO ARCHITECTURAL DRAWINGS FOR CASSETTE MOUNTING DETAILS.
- REFER TO CASSETTE PIPING SCHEMATIC ON SHEET M601 FOR INSTALLATION DETAILS.
- REFER TO REFRIGERANT PIPING INSTALLATION DETAIL ON M601 FOR ADDITIONAL INFORMATION.
- REFER TO MECHANICAL PIPING SCHEMATICS FOR ALL REFRIGERANT PIPE SIZES.
- NO PIPING TO BE ROUTED OVER ELECTRICAL PANELS, TRANSFORMERS, IDF, AND IDF EQUIPMENT. REFER TO ELECTRICAL PLANS FOR EQUIPMENT LOCATIONS.

### KEYNOTES

- ROUTE CONDENSATE PIPING DOWN ALONG WALL AND SPILL TO MOP SINK.
- ROUTE CONDENSATE PIPING DOWN ALONG WALL AND SPILL TO NEAREST FLOOR DRAIN.
- REFRIGERANT PIPING ROUTED UP TO FLOOR ABOVE. REFER TO SHEET M214 FOR CONTINUATION.
- CONDENSATE PIPE ROUTED UP TO FLOOR ABOVE. REFER TO SHEET M214 FOR CONTINUATION.
- ROUTE CONDENSATE PIPING DOWN IN WALL TO DRAIN BOX. INSTALL DRAIN BOX IN ACCESSIBLE LOCATION 18" ABOVE FINISHED FLOOR. DRAIN BOX TO BE MOUNTED FLUSH WITH WALL. REFER TO PLUMBING DRAWINGS FOR ADDITIONAL INFORMATION.

### CONDENSATE PIPE RUNOUT SCHEDULE

TAG	PIPE SIZE	TAG	PIPE SIZE
AC-7.5MC	1"	AC-36H	1-1/4"
AC-9.5MC	1"	AC-12V	3/4"
AC-12WC	1"	AC-18V	3/4"
AC-16MC	1"	AC-24V	3/4"
AC-18C	1-1/4"	AC-36V	3/4"
AC-24C	1-1/4"	AC-54V	3/4"
AC-9.5H	1-1/4"	AC-7.5W	3/4"
AC-12H	1-1/4"	AC-12W	3/4"
AC-18H	1-1/4"	AC-24W	3/4"
AC-24H	1-1/4"		



① LEVEL 0 - PIPING - AREA D  
1/8" = 1'-0"

DATE PLOTTED: 03/17/2017 10:04 AM

M204.dwg