



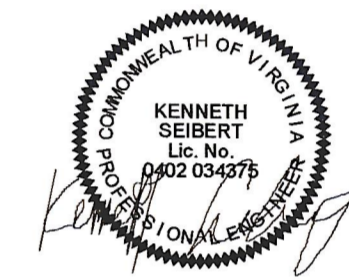
10411 Meeting Street  
Prosper, Kentucky 40059  
502.336.3805 • 1.502.326.2691  
www.cmta.org



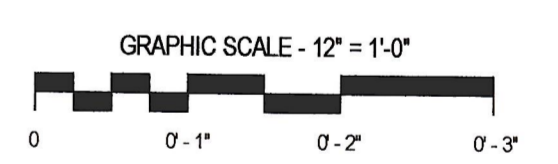
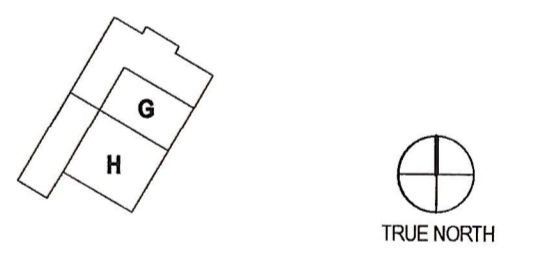
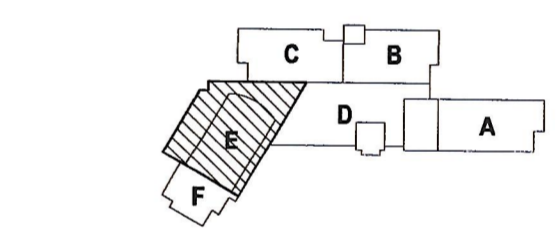
Catholic Diocese of Arlington  
Encourage and reach each person

## PAUL VI CATHOLIC HIGH SCHOOL

CATHOLIC DIOCESE OF ARLINGTON  
200 North Glebe Road  
Arlington, VA 22203  
Loudoun County ZCPA Number 2016-0005  
VMDO Project Number 15.1188



Checked By DRH  
Drawn By CMG



ISSUES AND REVISIONS		
NO.	SUBMITTAL	DATE
100%	CONSTRUCTION DOCUMENTS	03.17.17
2	ADDENDUM #2	04.17.17

### FLOOR PLAN LEVEL 0 AREA E - VRF PIPING

# M205

- GENERAL NOTES: VRF PIPING**
- CONTRACTOR IS RESPONSIBLE FOR COORDINATING THE MOUNTING OF VRF CASSETTE UNITS WITH CEILING GRID. REFER TO ARCHITECTURAL DRAWINGS FOR CASSETTE MOUNTING DETAILS.
  - REFER TO CASSETTE PIPING SCHEMATIC ON SHEET M001 FOR INSTALLATION DETAILS.
  - REFER TO REFRIGERANT PIPING INSTALLATION DETAIL ON M001 FOR ADDITIONAL INFORMATION.
  - REFER TO MECHANICAL PIPING SCHEMATICS FOR ALL REFRIGERANT PIPE SIZES.
  - NO PIPING TO BE ROUTED OVER ELECTRICAL PANELS, TRANSFORMERS, IDF, AND MDF EQUIPMENT. REFER TO ELECTRICAL PLANS FOR EQUIPMENT LOCATIONS.

- KEYNOTES**
- ROUTE CONDENSATE PIPING DOWN ALONG WALL AND SPILL TO MOP SINK.
  - ROUTE CONDENSATE PIPING DOWN ALONG WALL AND SPILL TO NEAREST FLOOR DRAIN.
  - REFRIGERANT PIPING ROUTED UP TO FLOOR ABOVE. REFER TO SHEET M215 FOR CONTINUATION.
  - CONDENSATE PIPE ROUTED UP TO FLOOR ABOVE. REFER TO SHEET M215 FOR CONTINUATION.
  - REFRIGERANT PIPING ROUTED UP TO FLOOR ABOVE. REFER TO SHEET M216 FOR CONTINUATION.

CONDENSATE PIPE RUNOUT SCHEDULE			
TAG	PIPE SIZE	TAG	PIPE SIZE
AC-7.5MC	1"	AC-36H	1-1/4"
AC-9.5MC	1"	AC-12V	3/4"
AC-12MC	1"	AC-18V	3/4"
AC-18MC	1"	AC-24V	3/4"
AC-18C	1-1/4"	AC-36V	3/4"
AC-24C	1-1/4"	AC-24V	3/4"
AC-9.5H	1-1/4"	AC-7.5W	3/4"
AC-12H	1-1/4"	AC-12W	3/4"
AC-18H	1-1/4"	AC-24W	3/4"
AC-24H	1-1/4"		

1 LEVEL 0 - PIPING - AREA E  
1/8" = 1'-0"