

1 LEVEL 0 - PIPING - AREA F
1/8" = 1'-0"

GENERAL NOTES: VRF PIPING

A. CONTRACTOR IS RESPONSIBLE FOR COORDINATING THE MOUNTING OF VRF CASSETTE UNITS WITH CEILING GRID. REFER TO ARCHITECTURAL DRAWINGS FOR CASSETTE MOUNTING DETAILS.

B. REFER TO CASSETTE PIPING SCHEMATIC ON SHEET M601 FOR INSTALLATION DETAILS.

C. REFER TO REFRIGERANT PIPING INSTALLATION DETAIL ON M601 FOR ADDITIONAL INFORMATION.

D. REFER TO MECHANICAL PIPING SCHEMATICS FOR ALL REFRIGERANT PIPE SIZES.

E. NO PIPING TO BE ROUTED OVER ELECTRICAL PANELS, TRANSFORMERS, IDF, AND IDF EQUIPMENT. REFER TO ELECTRICAL PLANS FOR EQUIPMENT LOCATIONS.

KEYNOTES

R1 ROUTE CONDENSATE PIPING DOWN ALONG WALL AND SPILL TO MOP SINK.

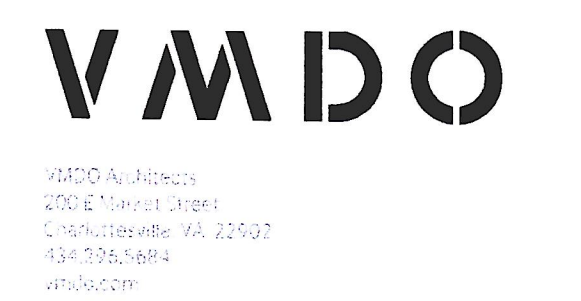
R2 ROUTE CONDENSATE PIPING DOWN ALONG WALL AND SPILL TO NEAREST FLOOR DRAIN.

R10 CONDENSATE PIPE ROUTED UP TO FLOOR ABOVE. REFER TO SHEET M215 FOR CONTINUATION.

R11 REFRIGERANT PIPING ROUTED UP TO FLOOR ABOVE. REFER TO SHEET M216 FOR CONTINUATION.

R12 CONDENSATE PIPE ROUTED UP TO FLOOR ABOVE. REFER TO SHEET M216 FOR CONTINUATION.

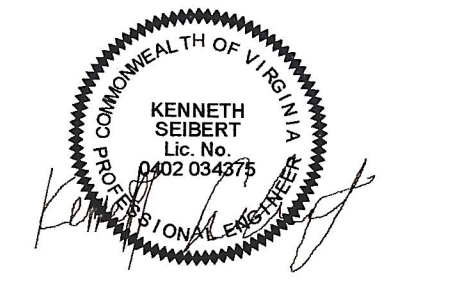
CONDENSATE PIPE RUNOUT SCHEDULE			
TAG	PIPE SIZE	TAG	PIPE SIZE
AC-7.5MC	1"	AC-36H	1-1/4"
AC-8.5MC	1"	AC-12V	3/4"
AC-12MC	1"	AC-18V	3/4"
AC-18MC	1"	AC-24V	3/4"
AC-18C	1-1/4"	AC-36V	3/4"
AC-24C	1-1/4"	AC-36V	3/4"
AC-8.5H	1-1/4"	AC-7.5H	3/4"
AC-12H	1-1/4"	AC-12W	3/4"
AC-18H	1-1/4"	AC-24W	3/4"
AC-24H	1-1/4"		



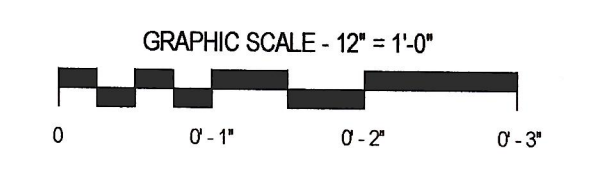
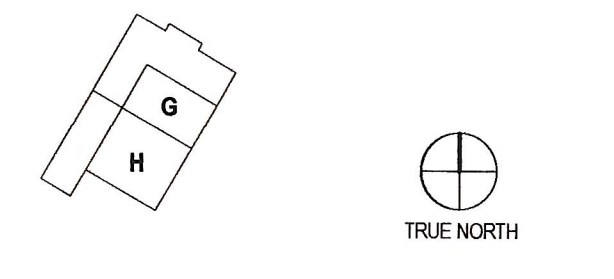
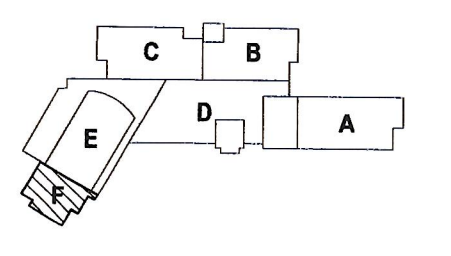
PAUL VI CATHOLIC HIGH SCHOOL

CATHOLIC DIOCESE OF ARLINGTON
200 North Glebe Road
Arlington, VA 22203

Loudoun County ZCPA Number 2016-0005
VMDO Project Number 15.1188



Checked By DRH
Drawn By CMG



ISSUES AND REVISIONS

NO.	SUBMITTAL	DATE
1	100% CONSTRUCTION DOCUMENTS	03.17.17
2	ADDENDUM #2	04.17.17
3	ADDENDUM #3	05.04.17

FLOOR PLAN LEVEL 0
AREA F - VRF PIPING

M206