

**GENERAL NOTES - VRF PIPING**

- A. CONTRACTOR IS RESPONSIBLE FOR COORDINATING THE MOUNTING OF VRF CASSETTE UNITS WITH CEILING GRID. REFER TO ARCHITECTURAL DRAWINGS FOR CASSETTE MOUNTING DETAILS.
- B. REFER TO CASSETTE PIPING SCHEMATIC ON SHEET M201 FOR INSTALLATION DETAILS.
- C. REFER TO REFRIGERANT PIPING INSTALLATION DETAIL ON M201 FOR ADDITIONAL INFORMATION.
- D. REFER TO MECHANICAL PIPING SCHEMATICS FOR ALL REFRIGERANT PIPE SIZES.
- E. NO PIPING TO BE ROUTED OVER ELECTRICAL PANELS, TRANSFORMERS, IDF, AND MDF EQUIPMENT. REFER TO ELECTRICAL PLANS FOR EQUIPMENT LOCATIONS.

**KEYNOTES**

- R1 ROUTE CONDENSATE PIPING DOWN ALONG WALL AND SPILL TO MOP SINK.
- R2 ROUTE CONDENSATE PIPING DOWN ALONG WALL AND SPILL TO NEAREST FLOOR DRAIN.
- R13 REFRIGERANT PIPING ROUTED UP TO FLOOR ABOVE. REFER TO SHEET M217 FOR CONTINUATION.

CONDENSATE PIPE RUNOUT SCHEDULE			
TAG	PIPE SIZE	TAG	PIPE SIZE
AC-7.5MC	1"	AC-38H	1-1/4"
AC-9.5MC	1"	AC-12V	3/4"
AC-12MC	1"	AC-18V	3/4"
AC-18MC	1"	AC-24V	3/4"
AC-18C	1-1/4"	AC-36V	3/4"
AC-24C	1-1/4"	AC-34V	3/4"
AC-8.5H	1-1/4"	AC-7.5W	3/4"
AC-12H	1-1/4"	AC-12W	3/4"
AC-18H	1-1/4"	AC-24W	3/4"
AC-24H	1-1/4"		

**VMDO**

VMDO Architects  
2142 Market Lane SE  
Charlottesville, VA 22902  
813-756-1464  
www.vmdo.com

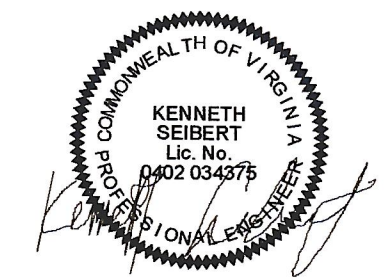


10411 Meeting Street  
Prospect, Kentucky 40089  
502.325.3055 • f 502.326.3291  
www.cmtaeng.com

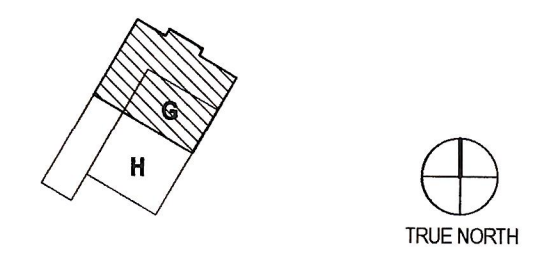
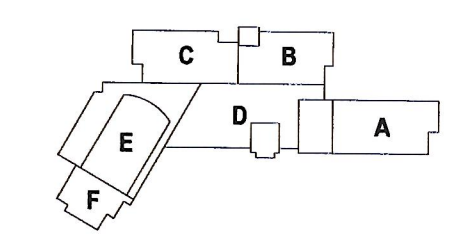
**Catholic Diocese of Arlington**  
Encouraging and nourishing faith

**PAUL VI CATHOLIC HIGH SCHOOL**

CATHOLIC DIOCESE OF ARLINGTON  
200 North Glebe Road  
Arlington, VA 22203  
Loudoun County ZCPA Number 2016-0005  
VMDO Project Number 15.1188



Checked By DRH  
Drawn By CMG



GRAPHIC SCALE - 1/8" = 1'-0"  
0 0-1' 0-2' 0-3'

ISSUES AND REVISIONS		
NO.	SUBMITTAL	DATE
1	100% CONSTRUCTION DOCUMENTS	03.17.17
	ADDENDUM #1	03.31.17

**FLOOR PLAN LEVEL 0  
AREA G - VRF PIPING**

LEVEL 0 - PIPING - AREA G  
1/8" = 1'-0"

**M207**