



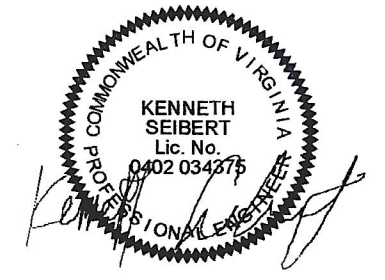
- GENERAL NOTES: VRF PIPING**
- A. CONTRACTOR IS RESPONSIBLE FOR COORDINATING THE MOUNTING OF VRF CASSETTE UNITS WITH CEILING GRID. REFER TO ARCHITECTURAL DRAWINGS FOR CASSETTE MOUNTING DETAILS.
 - B. REFER TO CASSETTE PIPING SCHEMATIC ON SHEET M801 FOR INSTALLATION DETAILS.
 - C. REFER TO REFRIGERANT PIPING INSTALLATION DETAIL ON M801 FOR ADDITIONAL INFORMATION.
 - D. REFER TO MECHANICAL PIPING SCHEMATICS FOR ALL REFRIGERANT PIPE SIZES.
 - E. NO PIPING TO BE ROUTED OVER ELECTRICAL PANELS, TRANSFORMERS, IDF, AND MDF EQUIPMENT. REFER TO ELECTRICAL PLANS FOR EQUIPMENT LOCATIONS.

- KEYNOTES**
- R1 ROUTE CONDENSATE PIPING DOWN ALONG WALL AND SPILL TO MOP SINK.
 - R13 REFRIGERANT PIPING ROUTED UP TO FLOOR ABOVE. REFER TO SHEET M217 FOR CONTINUATION.

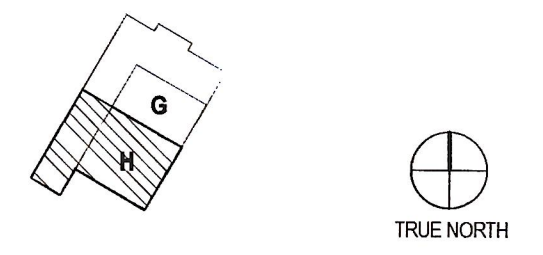
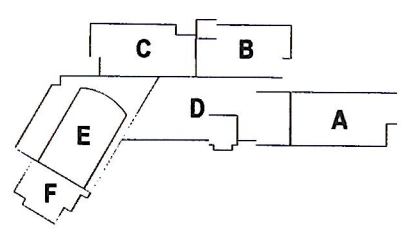
CONDENSATE PIPE RUNOUT SCHEDULE			
TAG	PIPE SIZE	TAG	PIPE SIZE
AC-7.5MC	1"	AC-36H	1-1/4"
AC-9.5MC	1"	AC-12V	3/4"
AC-12MC	1"	AC-18V	3/4"
AC-18MC	1"	AC-24V	3/4"
AC-18C	1-1/4"	AC-36V	3/4"
AC-24C	1-1/4"	AC-54V	3/4"
AC-9.5H	1-1/4"	AC-7.5W	3/4"
AC-12H	1-1/4"	AC-12W	3/4"
AC-18H	1-1/4"	AC-24W	3/4"
AC-24H	1-1/4"		

PAUL VI CATHOLIC HIGH SCHOOL

CATHOLIC DIOCESE OF ARLINGTON
200 North Glebe Road
Arlington, VA 22203
Loudoun County ZCPA Number 2016-0005
VMDO Project Number 15.1188



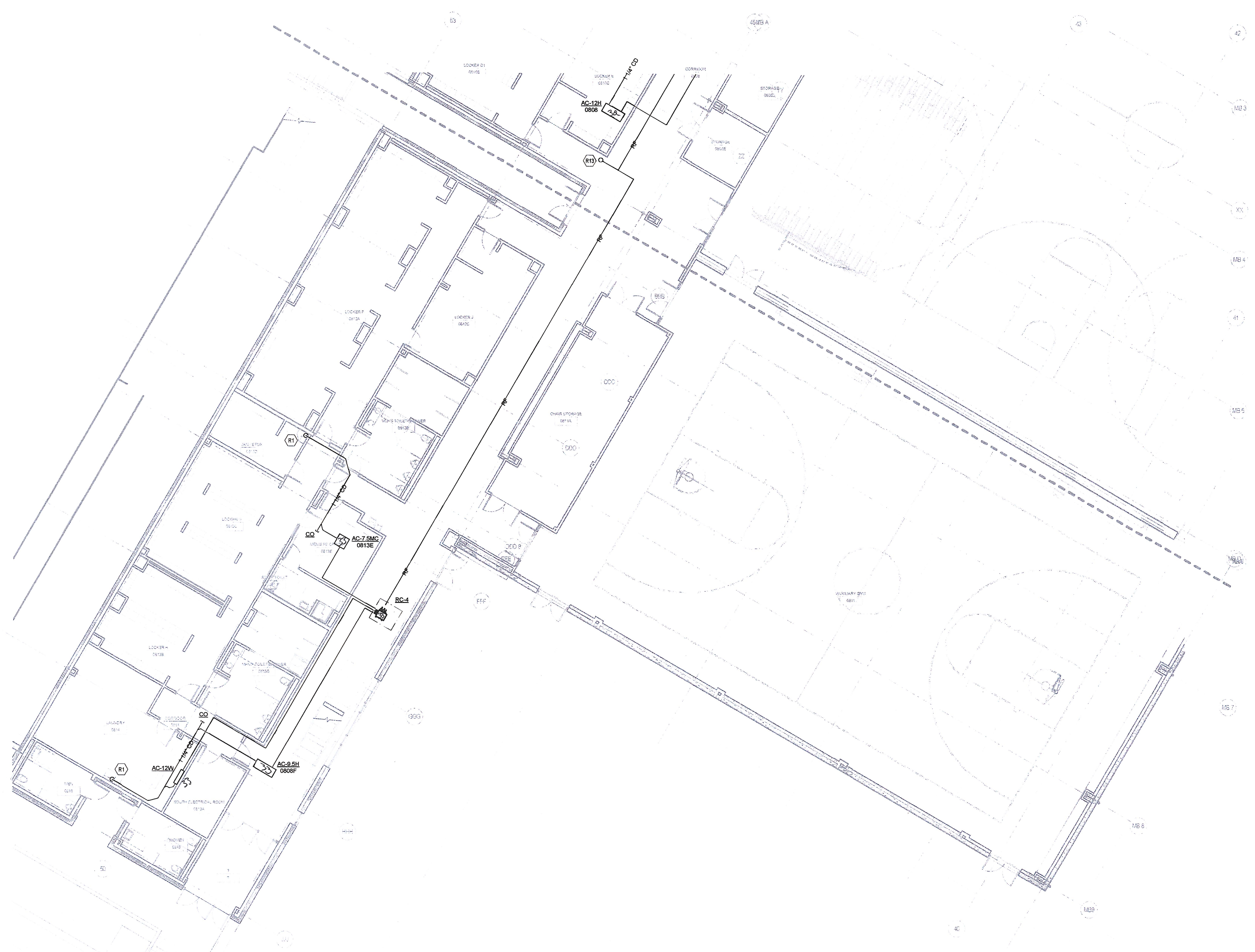
Checked By DRH
Drawn By CMG



ISSUES AND REVISIONS
NO. SUBMITTAL 100% CONSTRUCTION DOCUMENTS
DATE 03.17.17

**FLOOR PLAN LEVEL 0
AREA H - VRF PIPING**

① LEVEL 0 - PIPING - AREA H
1/8" = 1'-0"



W:\Projects\2016\15.1188\15.1188-M208.dwg
 03/17/17 10:00 AM
 15.1188-M208.dwg
 03/17/17 10:00 AM
 15.1188-M208.dwg