



10411 Meeting Street
 Prospect, Kentucky 40059
 502.326.3085 • F 502.326.2691
 www.cantareg.com

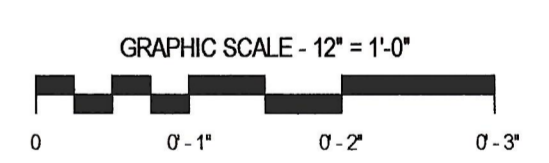
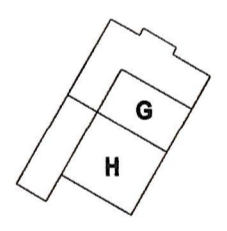
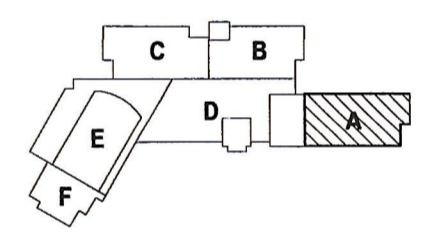


PAUL VI CATHOLIC HIGH SCHOOL

CATHOLIC DIOCESE OF ARLINGTON
 200 North Glebe Road
 Arlington, VA 22203
 Loudoun County ZCPA Number 2016-0005
 VMDO Project Number 15.1188



Checked By DRH
 Drawn By CMG

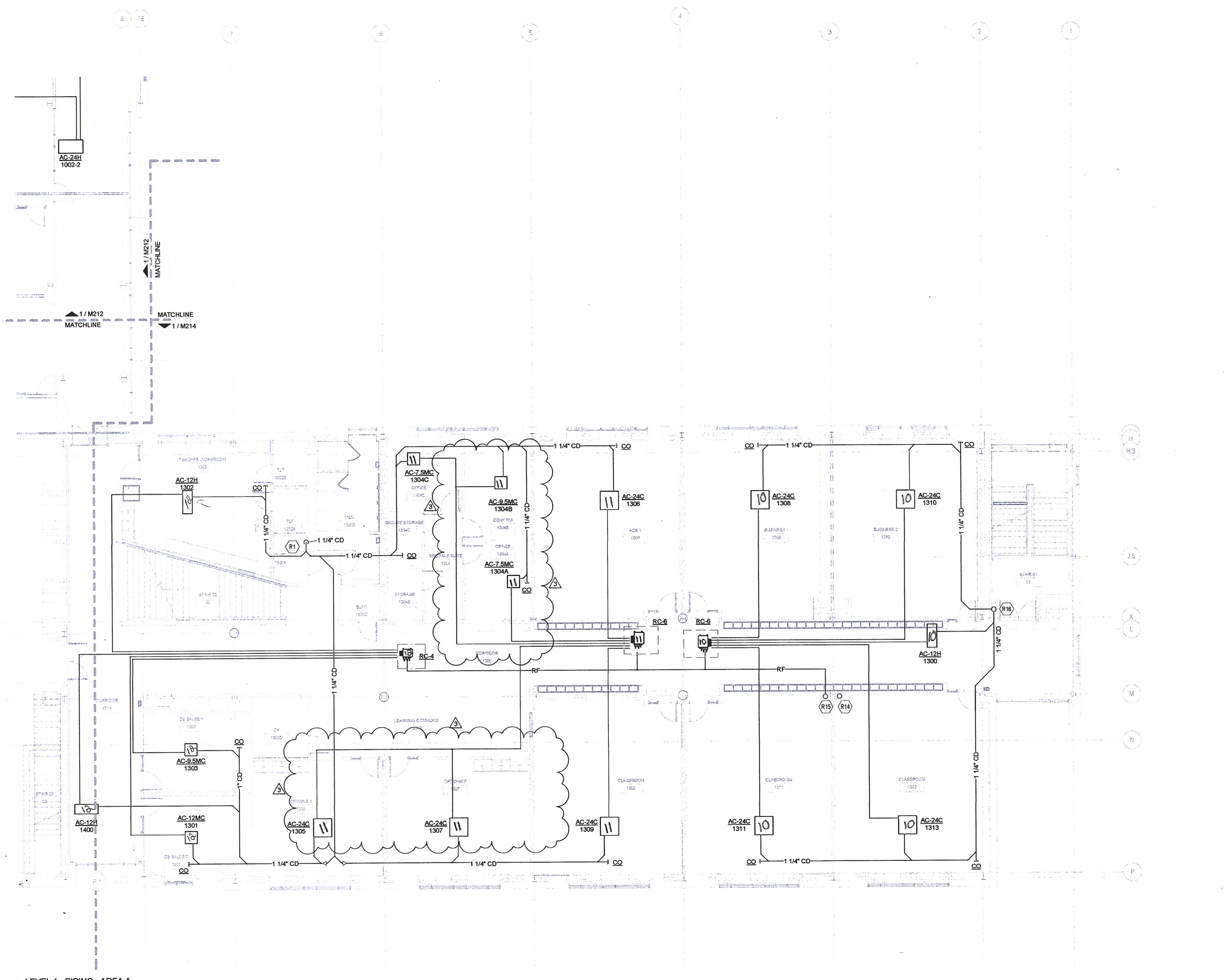


ISSUES AND REVISIONS		
NO.	SUBMITTAL	DATE
100%	CONSTRUCTION DOCUMENTS	03.17.17
3	ADDENDUM #3	05.04.17

- GENERAL NOTES - VRF PIPING**
- A. CONTRACTOR IS RESPONSIBLE FOR COORDINATING THE MOUNTING OF VRF CASSETTE UNITS WITH CEILING GRID. REFER TO ARCHITECTURAL DRAWINGS FOR CASSETTE MOUNTING DETAILS.
 - B. REFER TO CASSETTE PIPING SCHEMATIC ON SHEET M601 FOR INSTALLATION DETAILS.
 - C. REFER TO REFRIGERANT PIPING INSTALLATION DETAIL ON M601 FOR ADDITIONAL INFORMATION.
 - D. REFER TO MECHANICAL PIPING SCHEMATICS FOR ALL REFRIGERANT PIPE SIZES.
 - E. NO PIPING TO BE ROUTED OVER ELECTRICAL PANELS, TRANSFORMERS, IDF, AND MDF EQUIPMENT. REFER TO ELECTRICAL PLANS FOR EQUIPMENT LOCATIONS.

- KEYNOTES**
- R1 ROUTE CONDENSATE PIPING DOWN ALONG WALL AND SPILL TO MCP SINK.
 - R14 REFRIGERANT PIPING ROUTED UP/DOWN IN CHASE. REFER TO SHEETS M221 AND M201, RESPECTIVELY, FOR CONTINUATION. REFRIGERANT PIPING ROUTED IN CHASE UP TO FLOOR ABOVE. REFER TO SHEET M221 FOR CONTINUATION.
 - R16 CONDENSATE PIPING ROUTED UP/DOWN IN CHASE. REFER TO SHEETS M221 AND M201, RESPECTIVELY, FOR CONTINUATION.

CONDENSATE PIPE RUNOUT SCHEDULE			
TAG	PIPE SIZE	TAG	PIPE SIZE
AC-7.5MC	1"	AC-36H	1-1/4"
AC-8.5MC	1"	AC-12V	3/4"
AC-12MC	1"	AC-18V	3/4"
AC-18MC	1"	AC-24V	3/4"
AC-18C	1-1/4"	AC-36V	3/4"
AC-24C	1-1/4"	AC-54V	3/4"
AC-9.5H	1-1/4"	AC-7.5W	3/4"
AC-12H	1-1/4"	AC-12W	3/4"
AC-18H	1-1/4"	AC-24W	3/4"
AC-24H	1-1/4"		



① LEVEL 1 - PIPING - AREA A
 1/8" = 1'-0"

FLOOR PLAN LEVEL 1 AREA A - VRF PIPING