

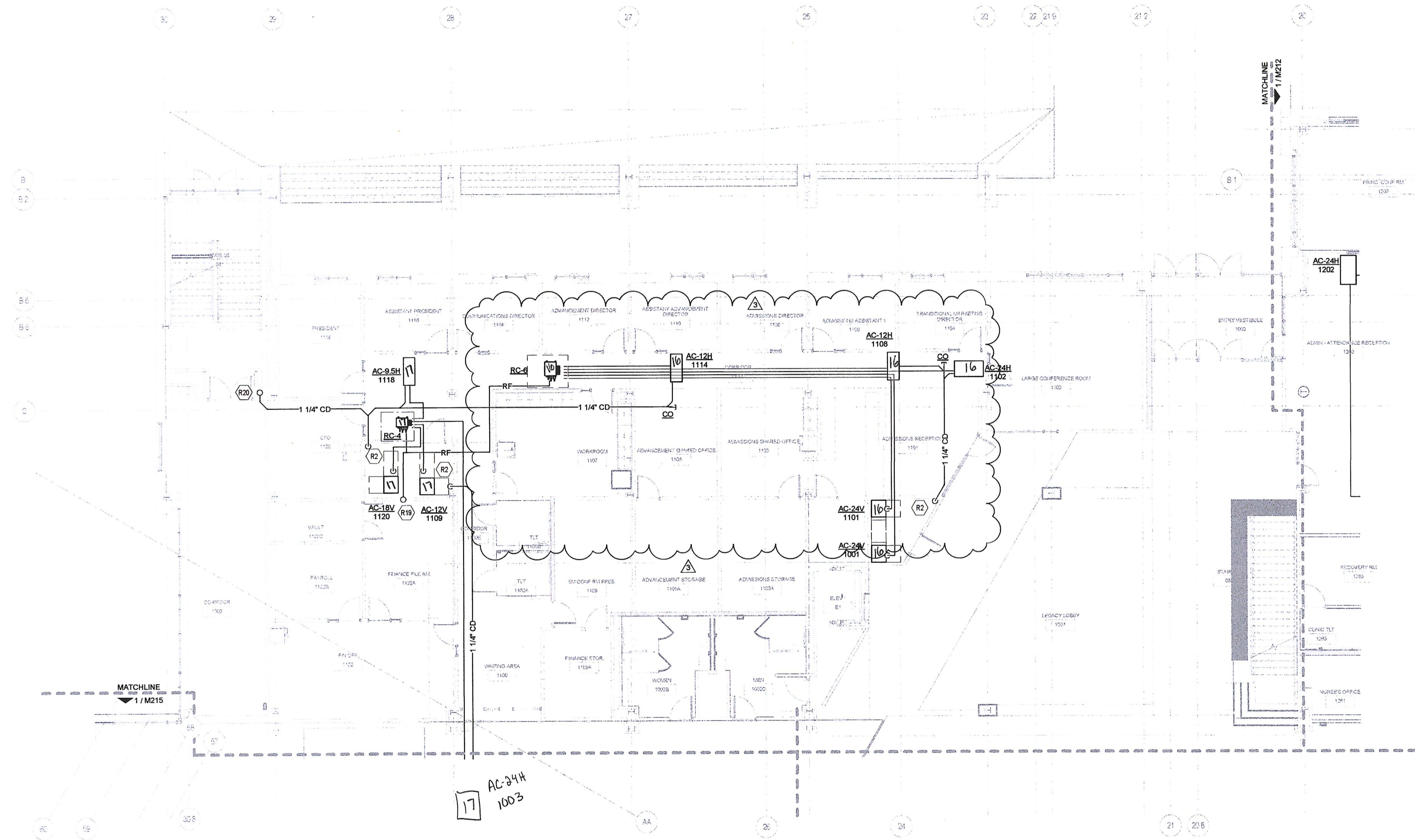
GENERAL NOTES - VRF PIPING

- A. CONTRACTOR IS RESPONSIBLE FOR COORDINATING THE MOUNTING OF VRF CASSETTE UNITS WITH CEILING GRID. REFER TO ARCHITECTURAL DRAWINGS FOR CASSETTE MOUNTING DETAILS.
- B. REFER TO CASSETTE PIPING SCHEMATIC ON SHEET M201 FOR INSTALLATION DETAILS.
- C. REFER TO REFRIGERANT PIPING INSTALLATION DETAIL ON M201 FOR ADDITIONAL INFORMATION.
- D. REFER TO MECHANICAL PIPING SCHEMATICS FOR ALL REFRIGERANT PIPE SIZES.
- E. NO PIPING TO BE ROUTED OVER ELECTRICAL PANELS, TRANSFORMERS, IDF, AND MDT EQUIPMENT. REFER TO ELECTRICAL PLANS FOR EQUIPMENT LOCATIONS.

KEYNOTES

- R2 ROUTE CONDENSATE PIPING DOWN ALONG WALL AND SPILL TO NEAREST FLOOR DRAIN.
- R19 REFRIGERANT PIPING ROUTED UP TO FLOOR ABOVE. REFER TO SHEET M223 FOR CONTINUATION.
- R20 CONDENSATE PIPING ROUTED UP IN CHASE TO FLOOR ABOVE. REFER TO SHEET M223 FOR CONTINUATION.

CONDENSATE PIPE RUNOUT SCHEDULE			
TAG	PIPE SIZE	TAG	PIPE SIZE
AC-7.5MC	1"	AC-36H	1-1/4"
AC-9.5MC	1"	AC-12V	3/4"
AC-12MC	1"	AC-18V	3/4"
AC-18MC	1"	AC-24V	3/4"
AC-18C	1-1/4"	AC-36V	3/4"
AC-24C	1-1/4"	AC-36V	3/4"
AC-9.5H	1-1/4"	AC-7.5H	3/4"
AC-12H	1-1/4"	AC-12H	3/4"
AC-18H	1-1/4"	AC-24H	3/4"
AC-24H	1-1/4"		



1 LEVEL 1 - PIPING - AREA C
1/8" = 1'-0"

VMDO

VMDO ADDRESS
200 E Market Street
Cincinnati, OH 45202
513.535.5484
www.vmdo.com



10411 Harding Street
Prospect, Kentucky 40059
502.333.3065 • F 502.333.2691
www.amtaengr.com



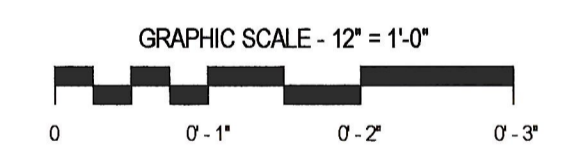
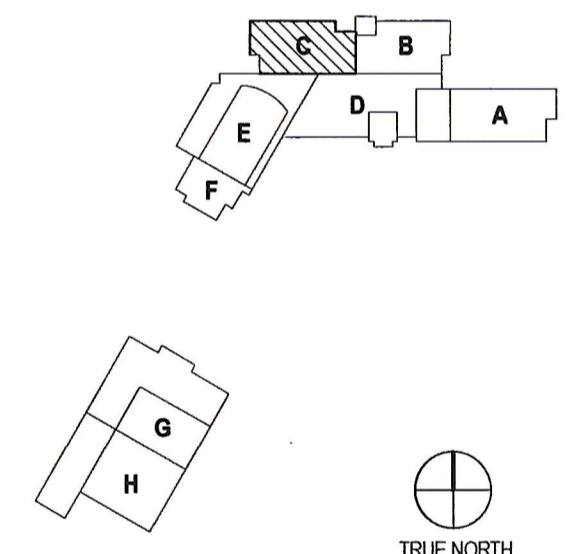
PAUL VI CATHOLIC HIGH SCHOOL

CATHOLIC DIOCESE OF ARLINGTON
200 North Glebe Road
Arlington, VA 22203

Loudoun County ZOPA Number 2016-0005
VMDO Project Number 15.1188



Checked By DRH
Drawn By CMG



ISSUES AND REVISIONS		
NO.	SUBMITTAL	DATE
3	ADDDENDUM #3	05.04.17

FLOOR PLAN LEVEL 1
AREA C - VRF PIPING

M213