

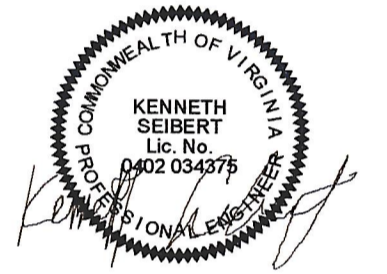


10411 Meeting Street
Prospect, Kentucky 40059
502.526.3665 • f 502.526.2691
www.cmta.com

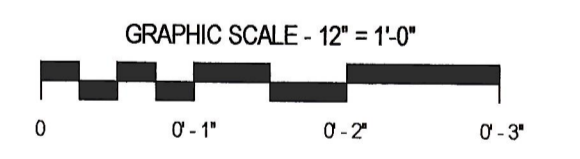
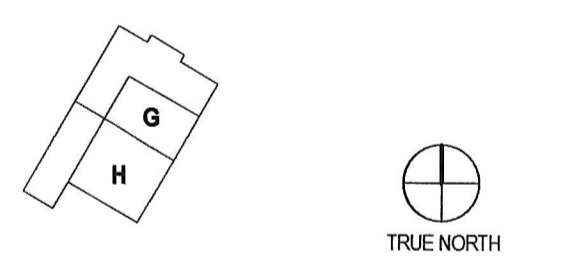
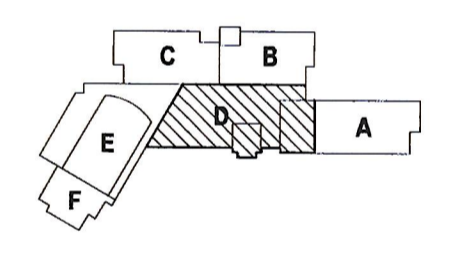


PAUL VI CATHOLIC HIGH SCHOOL

CATHOLIC DIOCESE OF ARLINGTON
200 North Glebe Road
Arlington, VA 22203
Loudoun County ZCPA Number 2016-0005
VMDO Project Number 15.1188



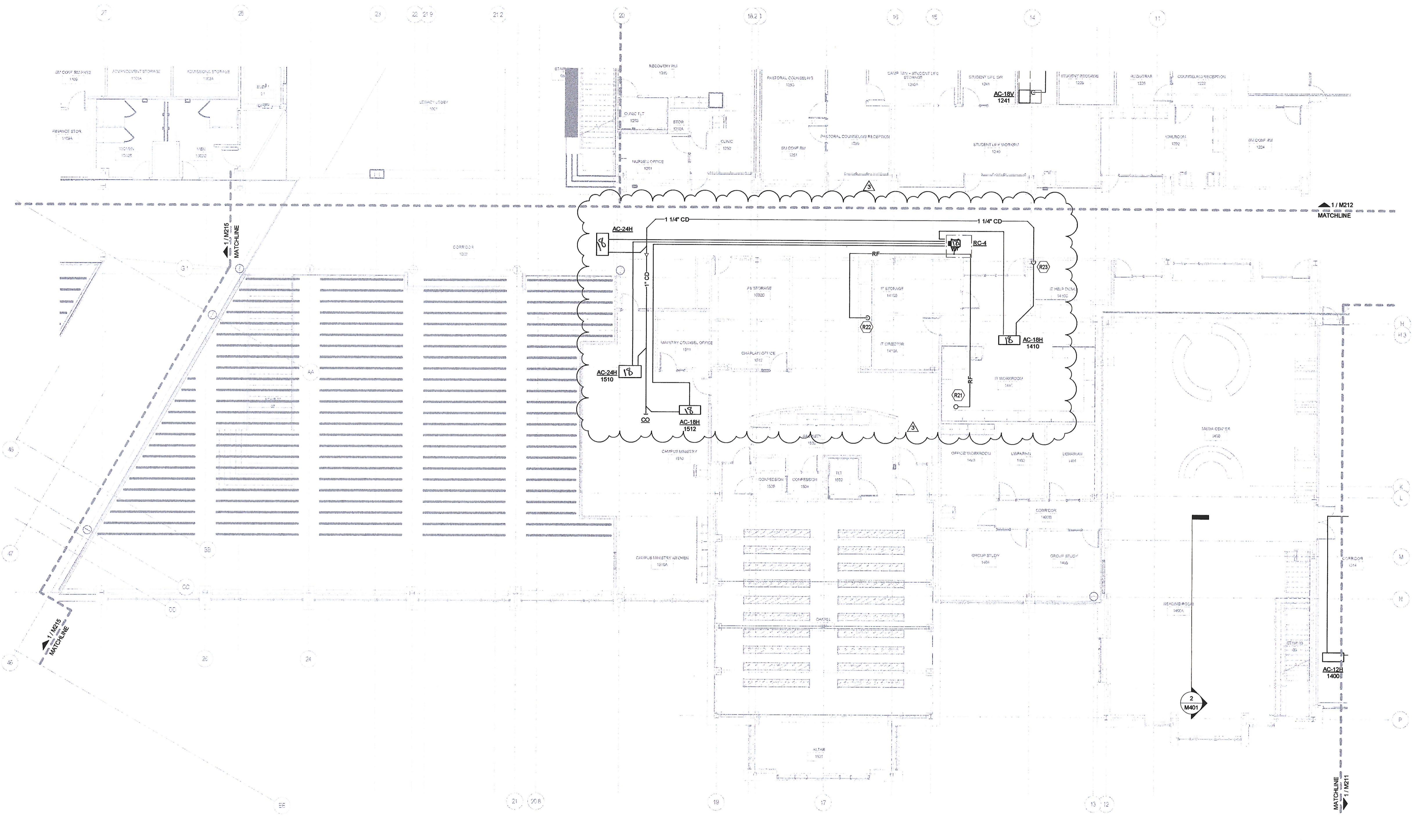
Checked By DRH
Drawn By CMG



- GENERAL NOTES - VRF PIPING**
- A. CONTRACTOR IS RESPONSIBLE FOR COORDINATING THE MOUNTING OF VRF CASSETTE UNITS WITH CEILING GRID. REFER TO ARCHITECTURAL DRAWINGS FOR CASSETTE MOUNTING DETAILS.
 - B. REFER TO CASSETTE PIPING SCHEMATIC ON SHEET M601 FOR INSTALLATION DETAILS.
 - C. REFER TO REFRIGERANT PIPING INSTALLATION DETAIL ON M601 FOR ADDITIONAL INFORMATION.
 - D. REFER TO MECHANICAL PIPING SCHEMATICS FOR ALL REFRIGERANT PIPE SIZES.
 - E. NO PIPING TO BE ROUTED OVER ELECTRICAL PANELS, TRANSFORMERS, IDF, AND MDF EQUIPMENT. REFER TO ELECTRICAL PLANS FOR EQUIPMENT LOCATIONS.

- KEYNOTES**
- R21 REFRIGERANT PIPING ROUTED UP TO CONDENSING UNIT ON ROOF. REFER TO SHEET M304 FOR CONTINUATION.
 - R22 REFRIGERANT PIPING ROUTED DOWN IN CHASE. REFER TO SHEET M204 FOR CONTINUATION.
 - R23 CONDENSATE PIPING ROUTED DOWN IN CHASE. REFER TO SHEET M204 FOR CONTINUATION.

CONDENSATE PIPE RUNOUT SCHEDULE			
TAG	PIPE SIZE	TAG	PIPE SIZE
AC-7.5MC	1"	AC-36H	1-1/4"
AC-9.5MC	1"	AC-12V	3/4"
AC-12MC	1"	AC-18V	3/4"
AC-18MC	1"	AC-24V	3/4"
AC-18C	1-1/4"	AC-36V	3/4"
AC-36C	1-1/4"	AC-54V	3/4"
AC-9.5H	1-1/4"	AC-7.5W	3/4"
AC-12H	1-1/4"	AC-12W	3/4"
AC-18H	1-1/4"	AC-24W	3/4"
AC-24H	1-1/4"		



1 LEVEL 1 - PIPING - AREA D
1/8" = 1'-0"

ISSUES AND REVISIONS

NO.	SUBMITTAL	DATE
3	100% CONSTRUCTION DOCUMENTS APPENDUM #3	03.17.17 05.04.17

FLOOR PLAN LEVEL 1 AREA D - VRF PIPING