



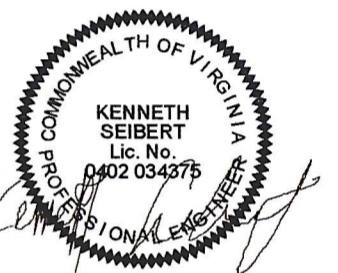
10411 Meeting Street
Prospect, Kentucky 40059
502.326.3085 • F 502.326.2691
www.cmtagr.com



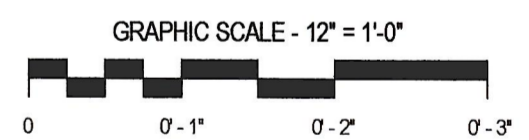
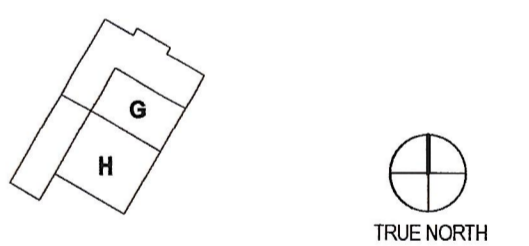
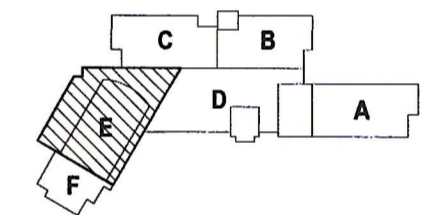
PAUL VI CATHOLIC HIGH SCHOOL

CATHOLIC DIOCESE OF ARLINGTON
200 North Glebe Road
Arlington, VA 22203

Loudoun County ZCPA Number 2016-0005
VMDO Project Number 15.1188



Checked By DRH
Drawn By CMG



ISSUES AND REVISIONS		
NO.	SUBMITTAL	DATE
100%	CONSTRUCTION DOCUMENTS	03.17.17
2	ADDENDUM #2	04.17.17

FLOOR PLAN LEVEL 1 AREA E - VRF PIPING

M215

- GENERAL NOTES: VRF PIPING**
- CONTRACTOR IS RESPONSIBLE FOR COORDINATING THE MOUNTING OF VRF CASSETTE UNITS WITH CEILING GRID. REFER TO ARCHITECTURAL DRAWINGS FOR CASSETTE MOUNTING DETAILS.
 - REFER TO CASSETTE PIPING SCHEMATIC ON SHEET M801 FOR INSTALLATION DETAILS.
 - REFER TO REFRIGERANT PIPING INSTALLATION DETAIL ON M801 FOR ADDITIONAL INFORMATION.
 - REFER TO MECHANICAL PIPING SCHEMATICS FOR ALL REFRIGERANT PIPE SIZES.
 - NO PIPING TO BE ROUTED OVER ELECTRICAL PANELS, TRANSFORMERS, IDF, AND JBOX EQUIPMENT. REFER TO ELECTRICAL PLANS FOR EQUIPMENT LOCATIONS.

- KEYNOTES**
- ROUTE CONDENSATE PIPING DOWN ALONG WALL AND SPILL TO NEAREST FLOOR DRAIN.
 - REFRIGERANT PIPING ROUTED UP TO CONDENSING UNIT ON ROOF. REFER TO SHEET M305 FOR CONTINUATION.
 - REFRIGERANT PIPING ROUTED DOWN IN WALL CAVITY TO FLOOR BELOW. REFER TO SHEET M205 FOR CONTINUATION.
 - CONDENSATE PIPING ROUTED DOWN IN CHASE. REFER TO SHEET M205 FOR CONTINUATION.
 - REFRIGERANT PIPING ROUTED IN WALL CAVITY UP TO CONDENSING UNIT ON ROOF AND DOWN TO FLOOR BELOW. REFER TO SHEETS M306 AND M206, RESPECTIVELY, FOR CONTINUATION.

CONDENSATE PIPE ROUNOUT SCHEDULE			
TAG	PIPE SIZE	TAG	PIPE SIZE
AC-7.5MC	1"	AC-36H	1-1/4"
AC-9.5MC	1"	AC-12V	3/4"
AC-12MC	1"	AC-18V	3/4"
AC-18MC	1"	AC-24V	3/4"
AC-18C	1-1/4"	AC-36V	3/4"
AC-24C	1-1/4"	AC-54V	3/4"
AC-9.5H	1-1/4"	AC-7.5W	3/4"
AC-12H	1-1/4"	AC-12W	3/4"
AC-18H	1-1/4"	AC-24W	3/4"
AC-24H	1-1/4"		