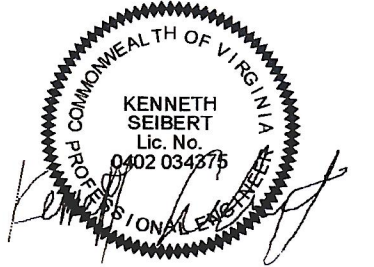


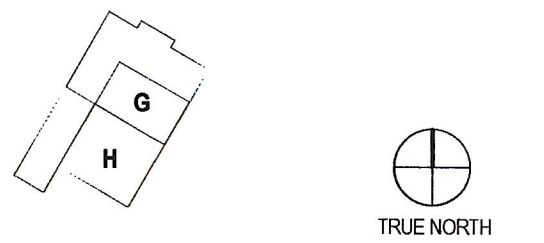
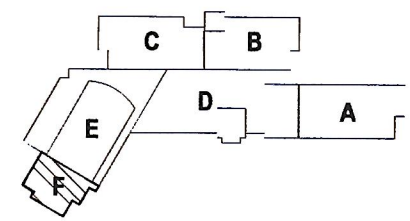


PAUL VI CATHOLIC HIGH SCHOOL

CATHOLIC DIOCESE OF ARLINGTON
200 North Glebe Road
Arlington, VA 22203
Loudoun County ZCPA Number **2016-0005**
VMDO Project Number **15.1188**



Checked By **DRH**
Drawn By **CMG**



ISSUES AND REVISIONS		
NO.	SUBMITTAL	DATE
100%	CONSTRUCTION DOCUMENTS	03.17.17

**FLOOR PLAN LEVEL 1
AREA F - VRF PIPING**

M216

- GENERAL NOTES: VRF PIPING**
- A. CONTRACTOR IS RESPONSIBLE FOR COORDINATING THE MOUNTING OF VRF CASSETTE UNITS WITH CEILING GRID. REFER TO ARCHITECTURAL DRAWINGS FOR CASSETTE MOUNTING DETAILS.
 - B. REFER TO CASSETTE PIPING SCHEMATIC ON SHEET M801 FOR INSTALLATION DETAILS.
 - C. REFER TO REFRIGERANT PIPING INSTALLATION DETAIL ON M601 FOR ADDITIONAL INFORMATION.
 - D. REFER TO MECHANICAL PIPING SCHEMATICS FOR ALL REFRIGERANT PIPE SIZES.
 - E. NO PIPING TO BE ROUTED OVER ELECTRICAL PANELS, TRANSFORMERS, IDF, AND MDF EQUIPMENT. REFER TO ELECTRICAL PLANS FOR EQUIPMENT LOCATIONS.
- KEYNOTES**
- R2. ROUTE CONDENSATE PIPING DOWN ALONG WALL AND SPILL TO NEAREST FLOOR DRAIN.
 - R27. REFRIGERANT PIPING ROUTED IN WALL CAVITY UP TO CONDENSING UNIT ON ROOF AND DOWN TO FLOOR BELOW. REFER TO SHEETS M306 AND M206, RESPECTIVELY, FOR CONTINUATION.
 - R28. CONDENSATE PIPE ROUTED DOWN IN CHASE. REFER TO SHEET M206 FOR CONTINUATION.

CONDENSATE PIPE RUNOUT SCHEDULE			
TAG	PIPE SIZE	TAG	PIPE SIZE
AC-7.5MC	1"	AC-38H	1-1/4"
AC-9.5MC	1"	AC-12V	3/4"
AC-12MC	1"	AC-18V	3/4"
AC-18MC	1"	AC-24V	3/4"
AC-18C	1-1/4"	AC-36V	3/4"
AC-24C	1-1/4"	AC-54V	3/4"
AC-6.5H	1-1/4"	AC-7.5W	3/4"
AC-12H	1-1/4"	AC-12W	3/4"
AC-18H	1-1/4"	AC-24W	3/4"
AC-24H	1-1/4"		



① LEVEL 1 - PIPING - AREA F
1/8" = 1'-0"

PROJECT: 15.1188 - PAUL VI CATHOLIC HIGH SCHOOL

DATE: 03/17/17