

- GENERAL NOTES- VRF PIPING**
- A. CONTRACTOR IS RESPONSIBLE FOR COORDINATING THE MOUNTING OF VRF CASSETTE UNITS WITH CEILING GRID. REFER TO ARCHITECTURAL DRAWINGS FOR CASSETTE MOUNTING DETAILS.
  - B. REFER TO CASSETTE PIPING SCHEMATIC ON SHEET M601 FOR INSTALLATION DETAILS.
  - C. REFER TO REFRIGERANT PIPING INSTALLATION DETAIL ON M601 FOR ADDITIONAL INFORMATION.
  - D. REFER TO MECHANICAL PIPING SCHEMATICS FOR ALL REFRIGERANT PIPE SIZES.
  - E. NO PIPING TO BE ROUTED OVER ELECTRICAL PANELS, TRANSFORMERS, IDF, AND MDF EQUIPMENT. REFER TO ELECTRICAL PLANS FOR EQUIPMENT LOCATIONS.

- KEYNOTES**
- R1. ROUTE CONDENSATE PIPING DOWN ALONG WALL AND SPILL TO MOP SINK.
  - R29. REFRIGERANT PIPING ROUTED UP TO CONDENSING UNIT ON ROOF. REFER TO SHEET M507 FOR CONTINUATION.
  - R30. REFRIGERANT PIPING ROUTED DOWN IN WALL CAVITY TO FLOOR BELOW. REFER TO SHEET M207 FOR CONTINUATION.

CONDENSATE PIPE RUNOUT SCHEDULE			
TAG	PIPE SIZE	TAG	PIPE SIZE
AC-7.5MC	1"	AC-38H	1-1/4"
AC-9.5MC	1"	AC-12V	3/4"
AC-12MC	1"	AC-18V	3/4"
AC-18MC	1"	AC-24V	3/4"
AC-18C	1-1/4"	AC-36V	3/4"
AC-24C	1-1/4"	AC-54V	3/4"
AC-8.5H	1-1/4"	AC-7.5W	3/4"
AC-12H	1-1/4"	AC-12W	3/4"
AC-18H	1-1/4"	AC-24W	3/4"
AC-24H	1-1/4"		

**VMDO**

10411 Meeting Street  
Proppert, Kentucky 40059  
502.326.3665 • f 502.326.2691  
www.vmdo.com

**CONSULTING ENGINEERS**

**cmta**

10411 Meeting Street  
Proppert, Kentucky 40059  
502.326.3665 • f 502.326.2691  
www.cmtaengr.com

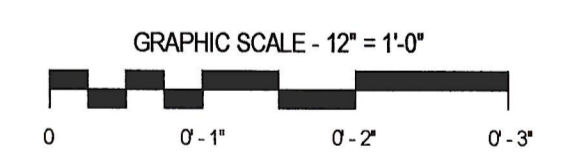
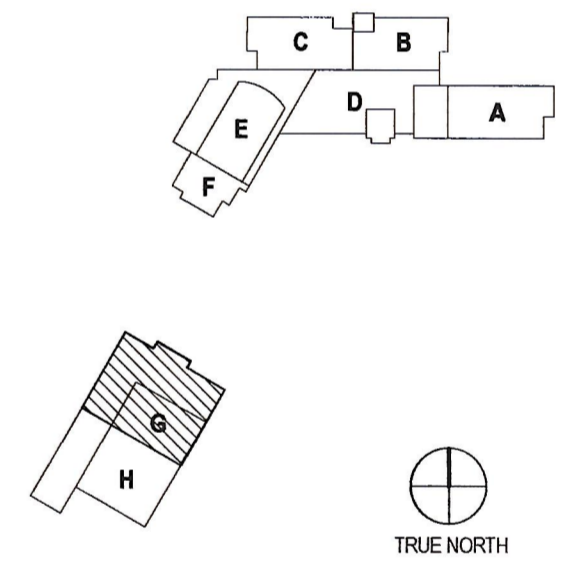
**Catholic Diocese of Arlington**  
In service and reach with purpose

**PAUL VI CATHOLIC HIGH SCHOOL**

CATHOLIC DIOCESE OF ARLINGTON  
200 North Glebe Road  
Arlington, VA 22203  
Loudoun County ZCPA Number 2016-0005  
VMDO Project Number 15.1188



Checked By: DRH  
Drawn By: CMG



**ISSUES AND REVISIONS**

NO.	SUBMITTAL	DATE
100%	CONSTRUCTION DOCUMENTS	03.17.17
1	ADDENDUM #1	03.31.17

**FLOOR PLAN LEVEL 1  
AREA G - VRF PIPING**

**M217**