



10411 Meeting Street
Prophet, Kentucky 40059
502.326.3085 • F 502.326.3691
www.cmtaeng.com

GENERAL NOTES: VRF PIPING

- A. CONTRACTOR IS RESPONSIBLE FOR COORDINATING THE MOUNTING OF VRF CASSETTE UNITS WITH CEILING GRID. REFER TO ARCHITECTURAL DRAWINGS FOR CASSETTE MOUNTING DETAILS.
- B. REFER TO CASSETTE PIPING SCHEMATIC ON SHEET M801 FOR INSTALLATION DETAILS.
- C. REFER TO REFRIGERANT PIPING INSTALLATION DETAIL ON M801 FOR ADDITIONAL INFORMATION.
- D. REFER TO MECHANICAL PIPING SCHEMATICS FOR ALL REFRIGERANT PIPE SIZES.
- E. NO PIPING TO BE ROUTED OVER ELECTRICAL PANELS, TRANSFORMERS, IDF, AND MOP EQUIPMENT. REFER TO ELECTRICAL PLANS FOR EQUIPMENT LOCATIONS.

KEYNOTES

- R1 ROUTE CONDENSATE PIPING DOWN ALONG WALL AND SPILL TO MOP SINK.
- R31 REFRIGERANT PIPING ROUTED UP TO CONDENSING UNIT ON ROOF. REFER TO SHEET M801 FOR CONTINUATION.
- R32 REFRIGERANT PIPING ROUTED IN CHASE UP TO CONDENSING UNIT ON ROOF AND DOWN TO FLOOR BELOW. REFER TO SHEETS M801 AND M211, RESPECTIVELY, FOR CONTINUATION.
- R33 CONDENSATE PIPING ROUTED DOWN IN CHASE. REFER TO SHEET M211 FOR CONTINUATION.

CONDENSATE PIPE RUNOUT SCHEDULE			
TAO	PIPE SIZE	TAO	PIPE SIZE
AC-7.5MC	1"	AC-38H	1-1/4"
AC-8.5MC	1"	AC-12V	3/4"
AC-12MC	1"	AC-18V	3/4"
AC-18MC	1"	AC-24V	3/4"
AC-18C	1-1/4"	AC-36V	3/4"
AC-24C	1-1/4"	AC-54V	3/4"
AC-9.5H	1-1/4"	AC-7.5W	3/4"
AC-12H	1-1/4"	AC-12W	3/4"
AC-18H	1-1/4"	AC-24W	3/4"
AC-24H	1-1/4"		

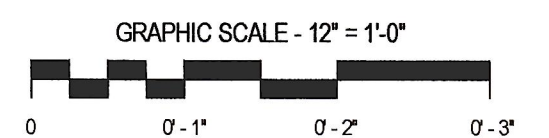
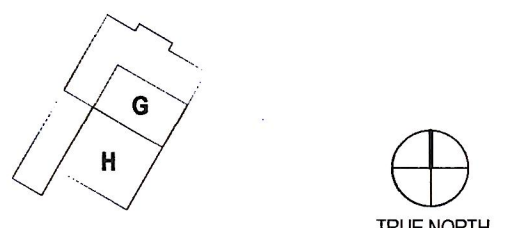
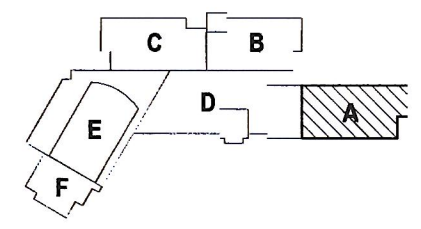


PAUL VI CATHOLIC HIGH SCHOOL

CATHOLIC DIOCESE OF ARLINGTON
200 North Glebe Road
Arlington, VA 22203
Loudoun County ZOPA Number 2016-0005
VMDO Project Number 15.1188



Checked By DRH
Drawn By CMG



ISSUES AND REVISIONS		DATE
NO. SUBMITTAL	100% CONSTRUCTION DOCUMENTS	03.17.17

① LEVEL 2 - PIPING - AREA A
1/8" = 1'-0"

FLOOR PLAN LEVEL 2
AREA A - VRF PIPING