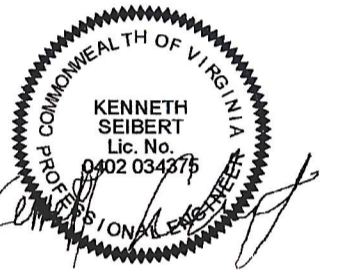




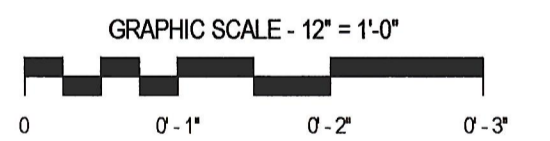
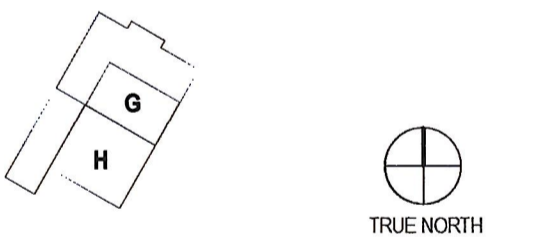
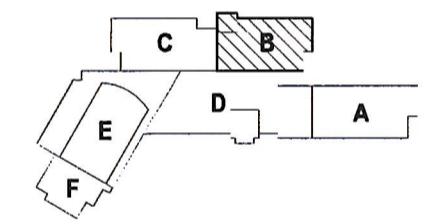
PAUL VI CATHOLIC HIGH SCHOOL

CATHOLIC DIOCESE OF ARLINGTON
200 North Glebe Road
Arlington, VA 22203

Loudoun County ZCPA Number 2016-0005
VMDO Project Number 15.1188



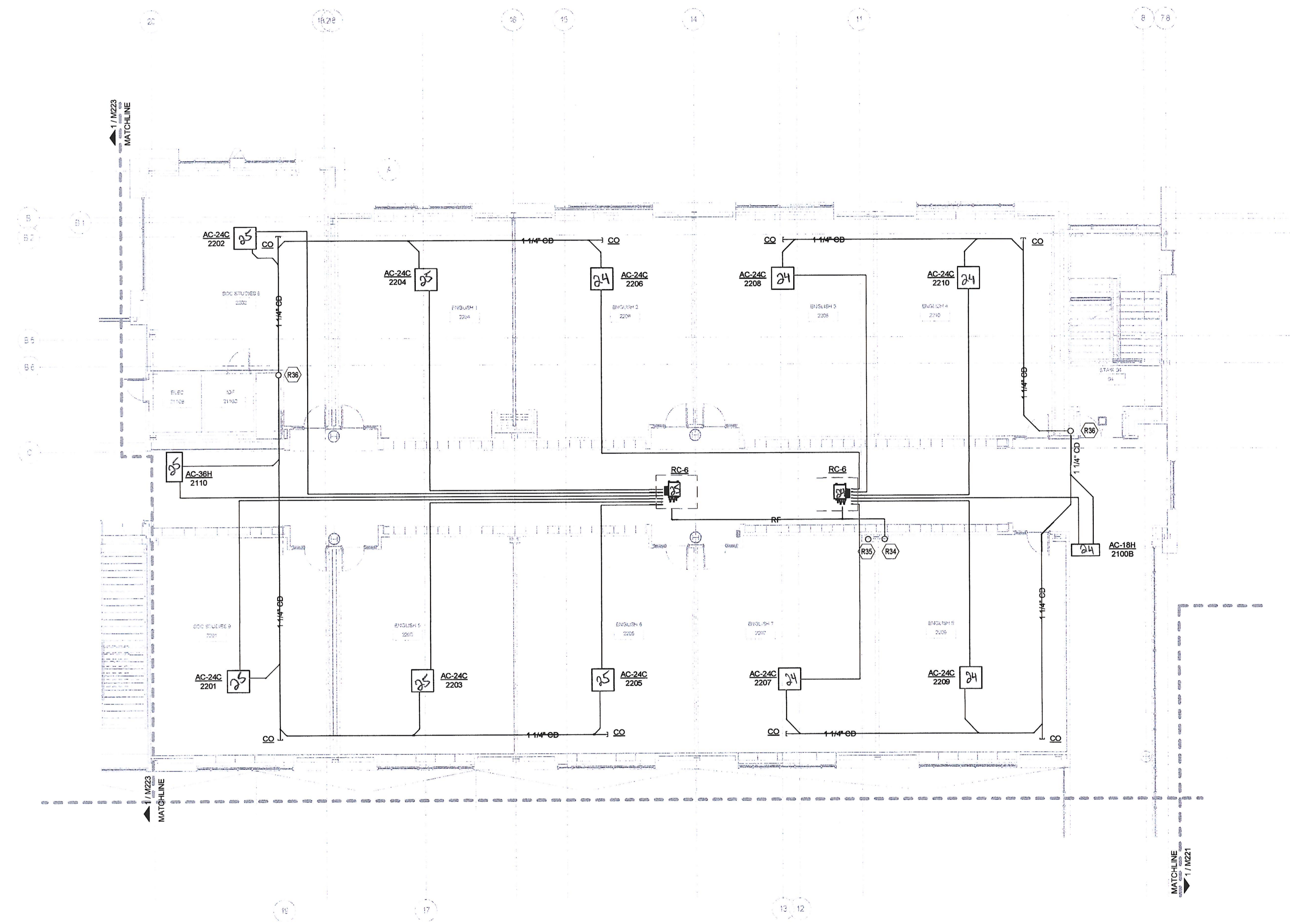
Checked By DRH
Drawn By CMG



ISSUES AND REVISIONS	
NO. SUBMITTAL	DATE
100% CONSTRUCTION DOCUMENTS	03.17.17

- GENERAL NOTES - VRF PIPING**
- A. CONTRACTOR IS RESPONSIBLE FOR COORDINATING THE MOUNTING OF VRF CASSETTE UNITS WITH CEILING GRID. REFER TO ARCHITECTURAL DRAWINGS FOR CASSETTE MOUNTING DETAILS.
 - B. REFER TO CASSETTE PIPING SCHEMATIC ON SHEET M601 FOR INSTALLATION DETAILS.
 - C. REFER TO REFRIGERANT PIPING INSTALLATION DETAIL ON M601 FOR ADDITIONAL INFORMATION.
 - D. REFER TO MECHANICAL PIPING SCHEMATICS FOR ALL REFRIGERANT PIPE SIZES.
 - E. NO PIPING TO BE ROUTED OVER ELECTRICAL PANELS, TRANSFORMERS, IDF, AND MDF EQUIPMENT. REFER TO ELECTRICAL PLANS FOR EQUIPMENT LOCATIONS.
- KEYNOTES**
- R34 REFRIGERANT PIPING ROUTED IN CHASE UP TO FLOOR ABOVE. REFER TO SHEET M223 FOR CONTINUATION.
 - R35 REFRIGERANT PIPING ROUTED UP/DOWN IN CHASE. REFER TO SHEETS M232 AND M212, RESPECTIVELY, FOR CONTINUATION.
 - R36 CONDENSATE PIPING ROUTED UP/DOWN IN CHASE. REFER TO SHEETS M222 AND M212, RESPECTIVELY, FOR CONTINUATION.

CONDENSATE PIPE RUNOUT SCHEDULE			
TAG	PIPE SIZE	TAG	PIPE SIZE
AC-75MC	1"	AC-36H	1-1/4"
AC-85MC	1"	AC-12V	3/4"
AC-12MC	1"	AC-18V	3/4"
AC-18MC	1"	AC-24V	3/4"
AC-18C	1-1/4"	AC-36V	3/4"
AC-24C	1-1/4"	AC-54V	3/4"
AC-85H	1-1/4"	AC-75W	3/4"
AC-12H	1-1/4"	AC-12W	3/4"
AC-18H	1-1/4"	AC-24W	3/4"
AC-24H	1-1/4"		



1 LEVEL 2 - PIPING - AREA B
1/8" = 1'-0"

**FLOOR PLAN LEVEL 2
AREA B - VRF PIPING**