

GENERAL NOTES: VRF PIPING

- A. CONTRACTOR IS RESPONSIBLE FOR COORDINATING THE MOUNTING OF VRF CASSETTE UNITS WITH CEILING GRID. REFER TO ARCHITECTURAL DRAWINGS FOR CASSETTE MOUNTING DETAILS.
- B. REFER TO CASSETTE PIPING SCHEMATIC ON SHEET M801 FOR INSTALLATION DETAILS.
- C. REFER TO REFRIGERANT PIPING INSTALLATION DETAIL ON M801 FOR ADDITIONAL INFORMATION.
- D. REFER TO MECHANICAL PIPING SCHEMATICS FOR ALL REFRIGERANT PIPE SIZES.
- E. NO PIPING TO BE ROUTED OVER ELECTRICAL PANELS, TRANSFORMERS, IDF, AND MDF EQUIPMENT. REFER TO ELECTRICAL PLANS FOR EQUIPMENT LOCATIONS.

KEYNOTES

- R1 ROUTE CONDENSATE PIPING DOWN ALONG WALL AND SPILL TO MOP SINK.
- R37 REFRIGERANT PIPING ROUTED UP TO FLOOR ABOVE. REFER TO SHEET M233 FOR CONTINUATION.
- R38 REFRIGERANT PIPING ROUTED UP/DOWN IN CHASE. REFER TO SHEETS M233 AND M213, RESPECTIVELY, FOR CONTINUATION.
- R39 CONDENSATE PIPING ROUTED UP/DOWN IN CHASE. REFER TO SHEETS M233 AND M213, RESPECTIVELY, FOR CONTINUATION.

CONDENSATE PIPE RUNOUT SCHEDULE			
TAG	PIPE SIZE	TAG	PIPE SIZE
AC-7.5MC	1"	AC-38H	1-1/4"
AC-9.5MC	1"	AC-12V	3/4"
AC-12MC	1"	AC-18V	3/4"
AC-18MC	1"	AC-24V	3/4"
AC-18C	1-1/4"	AC-36V	3/4"
AC-24C	1-1/4"	AC-54V	3/4"
AC-8.5H	1-1/4"	AC-7.5W	3/4"
AC-12H	1-1/4"	AC-12W	3/4"
AC-18H	1-1/4"	AC-24W	3/4"
AC-24H	1-1/4"		

**VMDO**

VMDO Architects  
200 E. Main St., Suite 100  
Charlottesville, VA 22902  
434.999.5484  
www.vmdo.com



10411 Meeting Street  
Proper, Kentucky 40059  
502.326.3085 • F 502.326.2691  
www.cmtaengr.com

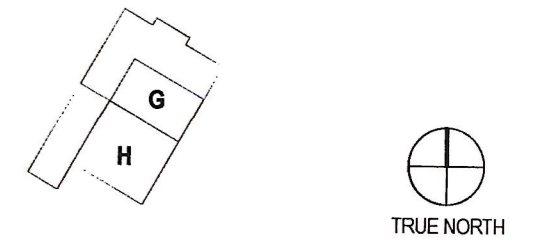
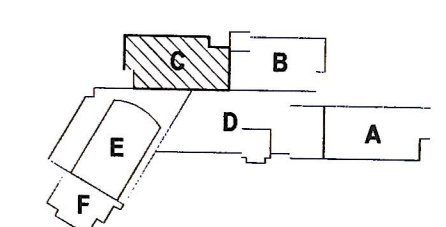
Catholic Diocese of Arlington  
Planning and construction services

**PAUL VI CATHOLIC HIGH SCHOOL**

CATHOLIC DIOCESE OF ARLINGTON  
200 North Glebe Road  
Arlington, VA 22203  
Loudoun County ZCPA Number 2016-0005  
VMDO Project Number 15.1188



Checked By DRH  
Drawn By CMG

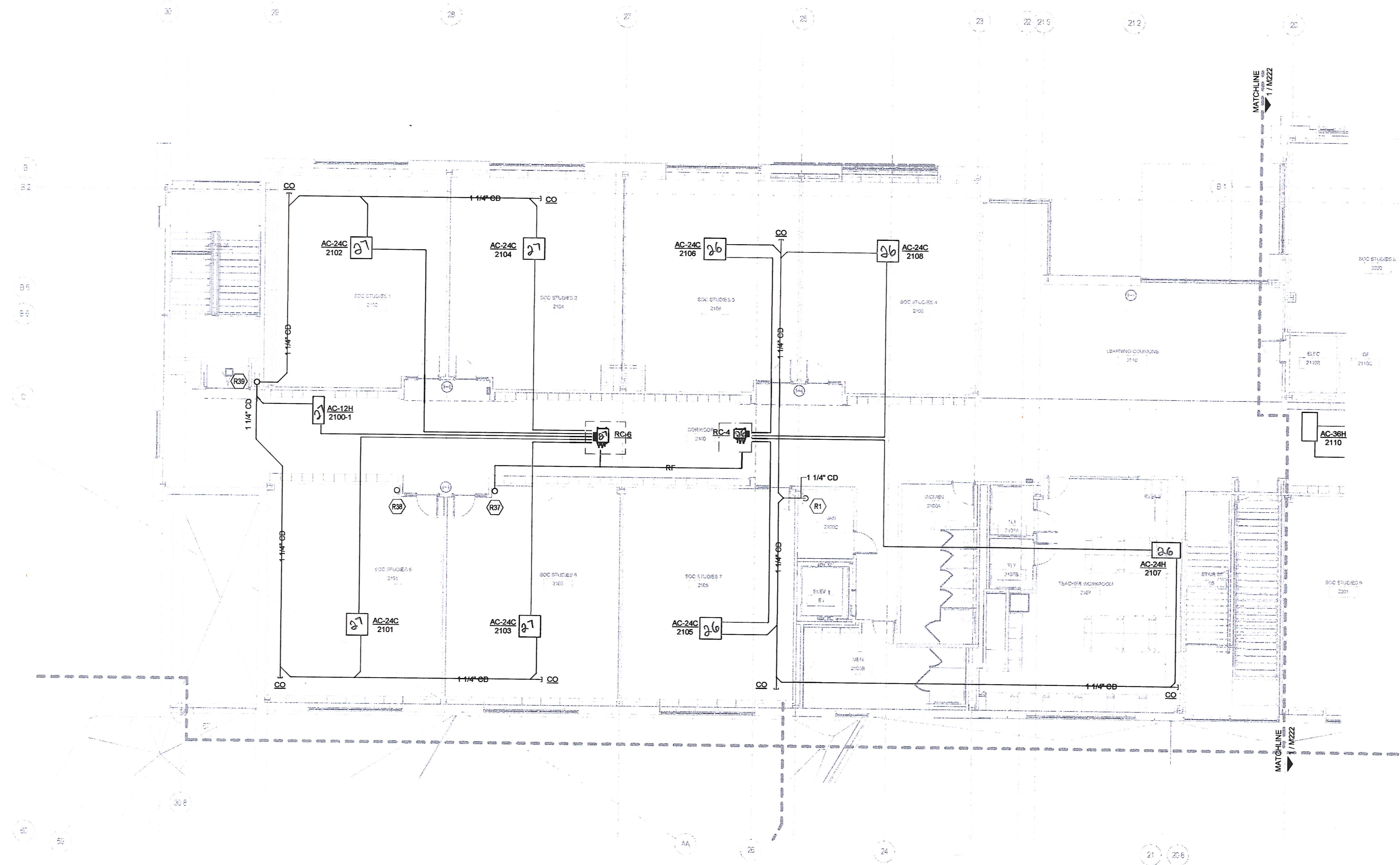


GRAPHIC SCALE - 12" = 1'-0"  
0 0'-1" 0'-2" 0'-3"

ISSUES AND REVISIONS	
NO. SUBMITTAL	DATE
10% CONSTRUCTION DOCUMENTS	03.17.17

**FLOOR PLAN LEVEL 2  
AREA C - VRF PIPING**

**M223**



1 LEVEL 2 - PIPING - AREA C  
1/8" = 1'-0"

P:\Projects\2017\15.1188\15.1188-M223.dwg