



10411 Meeting Street
Prospect, Kentucky 40059
502.526.3065 • F 502.526.3691
www.cmtaengr.com



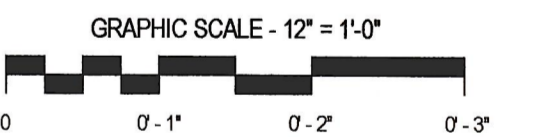
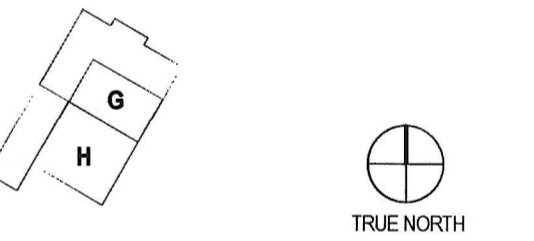
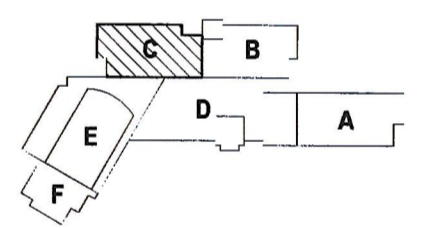
PAUL VI CATHOLIC HIGH SCHOOL

CATHOLIC DIOCESE OF ARLINGTON
200 North Glebe Road
Arlington, VA 22203

Loudoun County ZOPA Number 2016-0005
VMDO Project Number 15.1188



Checked By DRH
Drawn By CMG

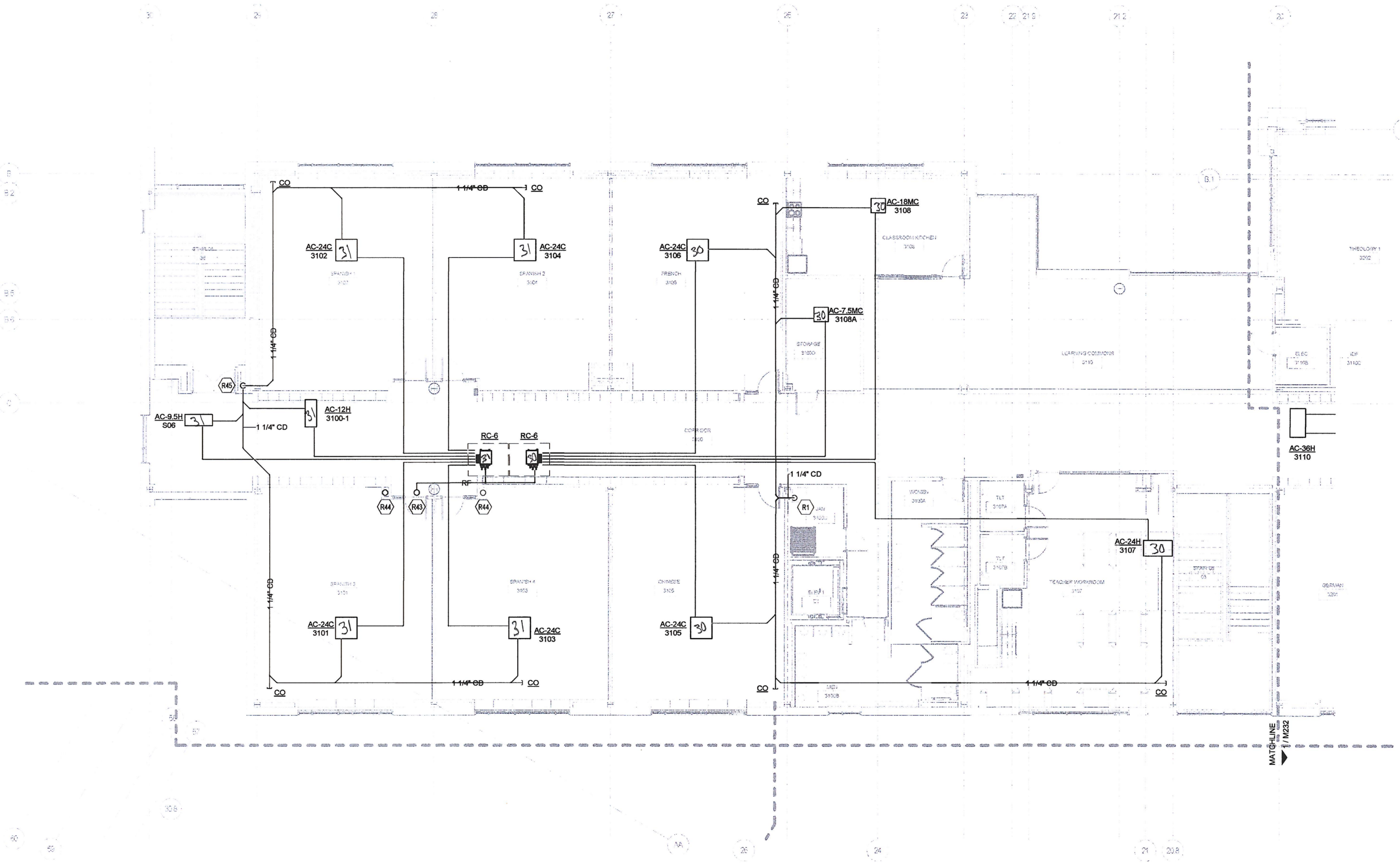


ISSUES AND REVISIONS		
NO.	SUBMITTAL	DATE
100%	CONSTRUCTION DOCUMENTS	03.17.17

- GENERAL NOTES - VRF PIPING**
- CONTRACTOR IS RESPONSIBLE FOR COORDINATING THE MOUNTING OF VRF CASSETTE UNITS WITH CEILING GRID. REFER TO ARCHITECTURAL DRAWINGS FOR CASSETTE MOUNTING DETAILS.
 - REFER TO CASSETTE PIPING SCHEMATIC ON SHEET M601 FOR INSTALLATION DETAILS.
 - REFER TO REFRIGERANT PIPING INSTALLATION DETAIL ON M601 FOR ADDITIONAL INFORMATION.
 - REFER TO MECHANICAL PIPING SCHEMATICS FOR ALL REFRIGERANT PIPE SIZES.
 - NO PIPING TO BE ROUTED OVER ELECTRICAL PANELS, TRANSFORMERS, IDF, AND MDF EQUIPMENT. REFER TO ELECTRICAL PLANS FOR EQUIPMENT LOCATIONS.

- KEYNOTES**
- ROUTE CONDENSATE PIPING DOWN ALONG WALL AND SPILL TO MOP SINK.
 - REFRIGERANT PIPING ROUTED UP TO CONDENSING UNIT ON ROOF. REFER TO SHEET M303 FOR CONTINUATION.
 - REFRIGERANT PIPING ROUTED IN CHASE UP TO CONDENSING UNIT ON ROOF AND DOWN TO FLOOR BELOW. REFER TO SHEETS M303 AND M223, RESPECTIVELY, FOR CONTINUATION.
 - CONDENSATE PIPING ROUTED DOWN IN CHASE. REFER TO SHEET M223 FOR CONTINUATION.

CONDENSATE PIPE RUNOUT SCHEDULE			
TAG	PIPE SIZE	TAG	PIPE SIZE
AC-7.5MC	1"	AC-36H	1-1/4"
AC-9.5MC	1"	AC-12V	3/4"
AC-12MC	1"	AC-18V	3/4"
AC-18MC	1"	AC-24V	3/4"
AC-18C	1-1/4"	AC-36V	3/4"
AC-24C	1-1/4"	AC-54V	3/4"
AC-9.5H	1-1/4"	AC-7.5W	3/4"
AC-12H	1-1/4"	AC-12W	3/4"
AC-18H	1-1/4"	AC-24W	3/4"
AC-24H	1-1/4"		



1 LEVEL 3 - PIPING - AREA C
1/8" = 1'-0"

FLOOR PLAN LEVEL 3 AREA C - VRF PIPING