



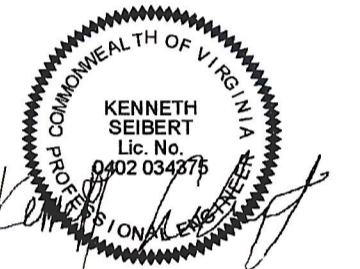
10411 Meeting Street  
Prophet, Kentucky 40059  
502.326.3085 • f 502.326.2691  
www.cmtaengr.com



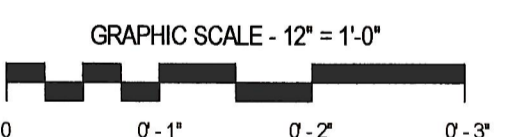
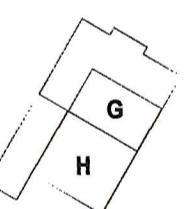
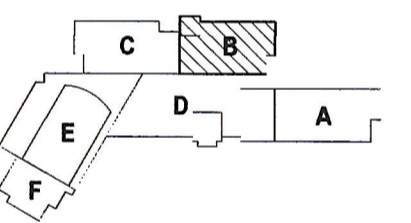
## PAUL VI CATHOLIC HIGH SCHOOL

CATHOLIC DIOCESE OF ARLINGTON  
200 North Glebe Road  
Arlington, VA 22203

Loudoun County ZOPA Number 2016-0005  
VMDO Project Number 15.1188



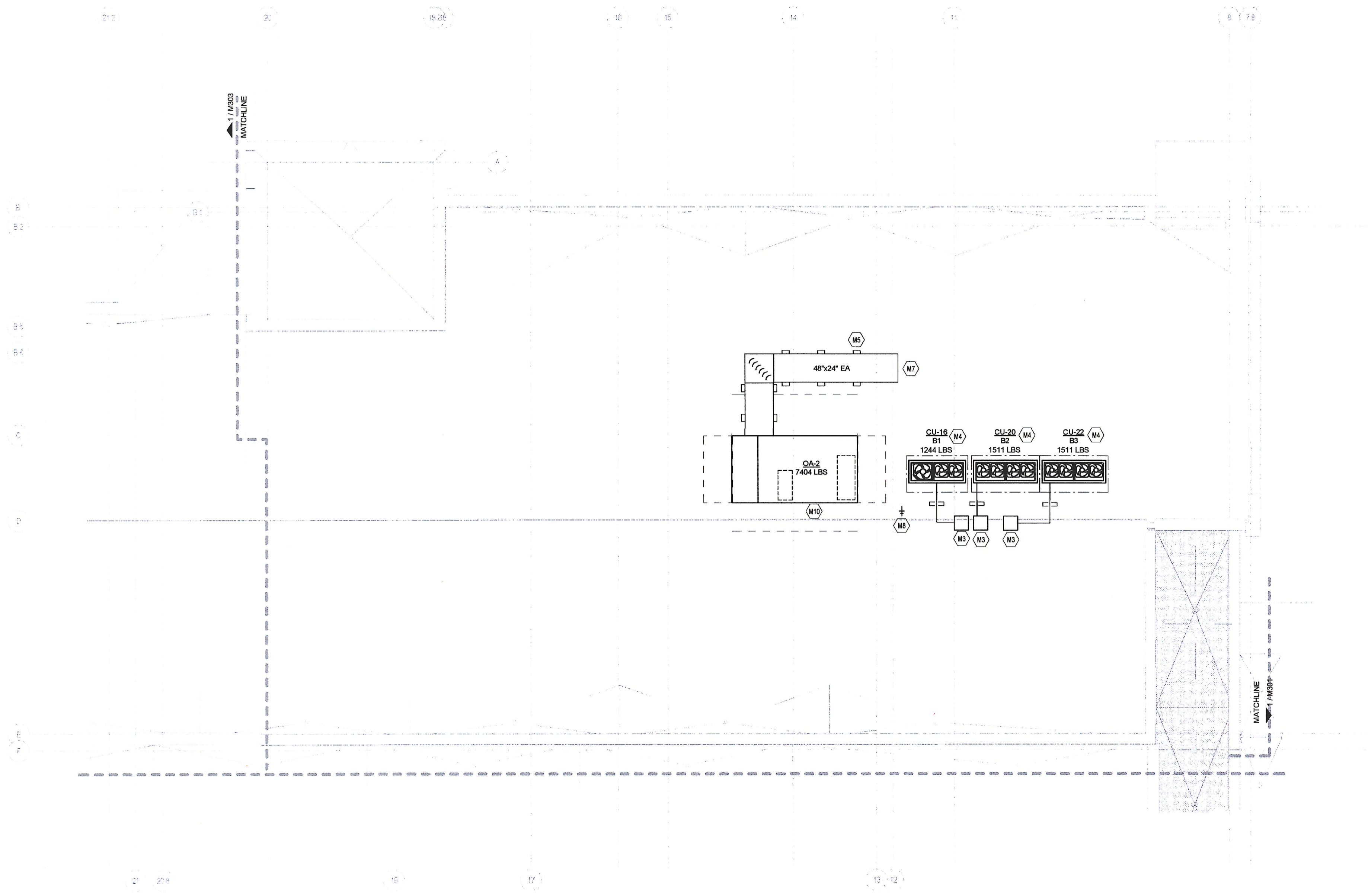
Checked By DRH  
Drawn By CMG



| ISSUES AND REVISIONS | DATE |
|----------------------|------|
| NO. SUBMITTAL        |      |

- GENERAL NOTES: ROOF**
- A. MAINTAIN ALL MANUFACTURER'S CLEARANCES ON ALL EQUIPMENT.
  - B. SPILL UNIT CONDENSATE TO NEAREST ROOF DRAIN. SIZE CONDENSATE PIPE PER MANUFACTURER'S RECOMMENDATIONS.
  - C. REFER TO SHEETS M403 AND M404 FOR ROOFTOP UNIT DETAILS.

- KEYNOTES**
- M3 ROUTE THE REFRIGERANT PIPING DOWN THROUGH A NEW ROOF CURB/PIPING PORTAL. PROVIDE A ROOF PRODUCTS MODEL RPPC-20 ROOF CURB WITH PIPE CHASE. REFER TO THE PIPE PORTAL DETAIL ON SHEET M602 FOR ADDITIONAL INFORMATION. ROOF CURBS SHALL BE 3'-0" AWAY FROM CONDENSING UNIT. REFRIGERANT PIPING SHALL BE SUPPORTED BY COOPER B-LINE C-SERIES ROOFTOP SUPPORTS.
  - M4 CONDENSING UNIT MOUNTED ON A ROOF CURB. REFER TO DETAIL ON SHEET M602.
  - M5 PROVIDE DUCT SUPPORTS 5'-0" ON CENTER. DUCT SUPPORTS SHALL BE COOPER, B-LINE, MODEL C-SERIES OR EQUAL.
  - M7 TERMINATE UNIT EXHAUST AT LEAST 25'-0" FROM ANY UNITS' OUTSIDE AIR INTAKE. PROVIDE DUCT WITH EPOXY WEATHER COATING AND 1/2" MESH SCREEN.
  - M8 ROOF HYDRANT. REFERENCE PLUMBING DRAWINGS FOR ADDITIONAL DETAIL.
  - M10 DUCTWORK DOWN TO FLOOR BELOW. REFER TO SHEET M132 FOR CONTINUATION.



1 ROOF - MECHANICAL - AREA B  
1/8" = 1'-0"

## ROOF PLAN - AREA B - MECHANICAL