

GENERAL NOTES: ROOF
 A. MAINTAIN ALL MANUFACTURER'S CLEARANCES ON ALL EQUIPMENT.
 B. SPILL UNIT CONDENSATE TO NEAREST ROOF DRAIN. SIZE CONDENSATE PIPE PER MANUFACTURER'S RECOMMENDATIONS.
 C. REFER TO SHEETS M403 AND M404 FOR ROOFTOP UNIT DETAILS.

KEYNOTES

- M1 EXHAUST FAN INSTALLED ON 18" TALL CURB. TRANSITION DUCTWORK TO FAN OPENING AS REQUIRED.
- M3 ROUTE THE REFRIGERANT PIPING DOWN THROUGH A NEW ROOF CURB/PILING PORTAL. PROVIDE A ROOF PRODUCTS MODEL RPPC-90 ROOF CURB WITH PIPE CHASE. REFER TO THE PIPE PORTAL DETAIL ON SHEET M602 FOR ADDITIONAL INFORMATION. ROOF CURB SHALL BE 3'-0" AWAY FROM CONDENSING UNIT. REFRIGERANT PIPING SHALL BE SUPPORTED BY COOPER B-LINE C-SERIES ROOFTOP SUPPORTS.
- M4 CONDENSING UNIT MOUNTED ON A ROOF CURB. REFER TO DETAIL ON SHEET M602.
- M5 PROVIDE DUCT SUPPORTS 5'-0" ON CENTER. DUCT SUPPORTS SHALL BE COOPER, B-LINE, MODEL C-SERIES OR EQUAL.
- M6 SMOKE VENT ON ROOF. PROVIDE ACOUSTICALLY RATED BRICO DOUBLE LEAF FIRE VENTS - MODEL ACDSH772 (ACCEPTABLE ALTERNATE MANUFACTURERS ARE WYSTORM OR MILCOR). VENT TO BE OPERATED BY THERMOLATCH MECHANISM MANUALLY AT STAGE LEVEL OR BY HEAT AT 165 DEGREE FUSIBLE LINK. COORDINATE OPENING WITH ROOF STRUCTURE SO THAT OPENING IS BETWEEN JOIST. REFER TO STRUCTURAL PLANS FOR DETAILS. PROVIDE SMOKE VENTS WITH SECURITY BARS WELDED IN THE CURB.
- M7 TERMINATE UNIT EXHAUST AT LEAST 25'-0" FROM ANY UNITS' OUTSIDE AIR INTAKE. PROVIDE DUCT WITH EPOXY WEATHER COATING AND 1/2" MESH SCREEN.
- M8 ROOF HYDRANT. REFERENCE PLUMBING DRAWINGS FOR ADDITIONAL DETAIL.
- M14 DUCTWORK DOWN TO FLOOR BELOW. REFER TO SHEET M115 FOR CONTINUATION.
- M15 DUCTWORK DOWN TO FLOOR BELOW. REFER TO SHEET M116 FOR CONTINUATION.
- M16 DUCTWORK CONTINUES INTO THEATRE. REFER TO SHEET M125 FOR CONTINUATION.

VMDO

VMDO Architects
 202 S. Main Street
 Charlottesville, VA 22902
 703.736.5588
 vmdo.com



10411 Meeting Street
 Prospect, Kentucky 40059
 502.236.2685 • F 502.236.2691
 www.vmdo.com

Catholic Diocese of Arlington
 Coverage and Faith Pathways

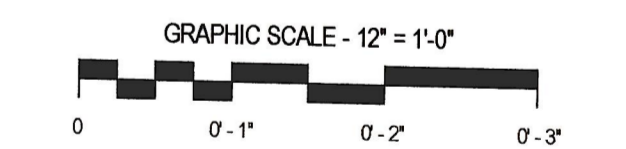
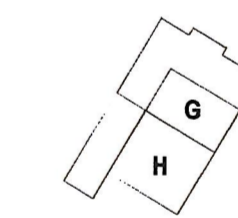
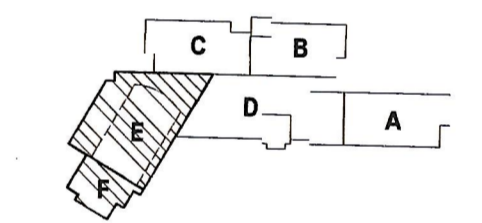
PAUL VI CATHOLIC HIGH SCHOOL

CATHOLIC DIOCESE OF ARLINGTON
 200 North Glebe Road
 Arlington, VA 22203

Loudoun County ZCPA Number 2016-0005
 VMDO Project Number 15.1188



Checked By DRH
 Drawn By CMG



ISSUES AND REVISIONS	DATE
NO. SUBMITTAL	

ROOF PLAN - AREA E/F - MECHANICAL

M305

1 ROOF - MECHANICAL - AREA E/F
 1/8" = 1'-0"

DRAWING BY: DRH

DATE: 10/20/15