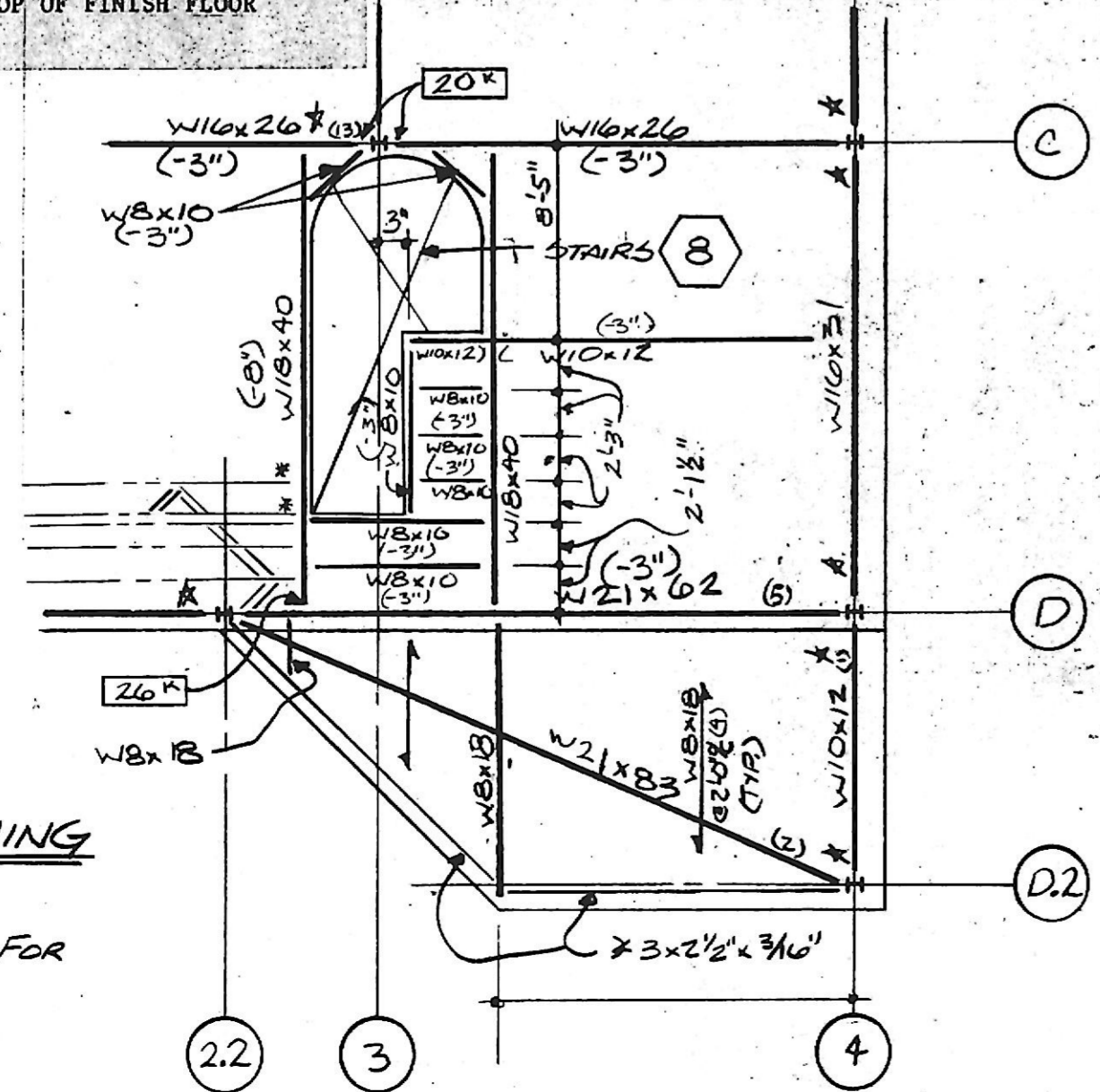


3RD & 4TH FLOOR FRAMING PLAN 1/8" = 1'-0"

- ENTIRE FLOOR SHALL BE 2 1/2" CONCRETE OVER DECK CORRUGATIONS ON 9/16" - 28 GAUGE GALVANIZED METAL DECK WITH MINIMUM S = .036 IN., MINIMUM I<sub>x</sub> = .012 IN<sup>4</sup> ON STEEL JOISTS UNLESS OTHERWISE NOTED.
- SEE ARCHITECTURAL DRAWING FOR ELEVATION TOP OF FINISH FLOOR.
- TOP OF STEEL BEAMS - 5 1/2" BELOW TOP OF FINISH FLOOR UNLESS OTHERWISE NOTED THUS (-6").
- PROVIDE JOIST ON CENTER LINE COLUMN (TYPICAL).
- ALL CONCRETE TO BE REINFORCED WITH 6#5-WI.4#W1.4 W.W.M. LAP ALL JOINTS 6" MINIMUM. PROVIDE ADDITIONAL 5' WIDE LAYER OVER ALL INTERIOR BEARING WALLS AND/OR BEAMS.
- \* - INDICATES SPECIAL 5" DEEP JOIST BEARING SEATS, THE END OF JOIST.



PARTIAL 4TH FL. FRAMING 1/8" = 1'-0"

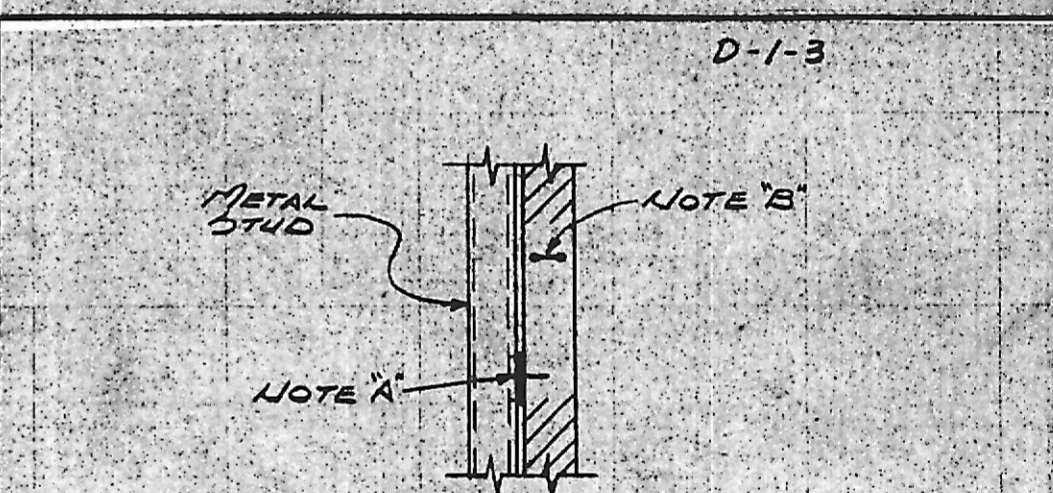
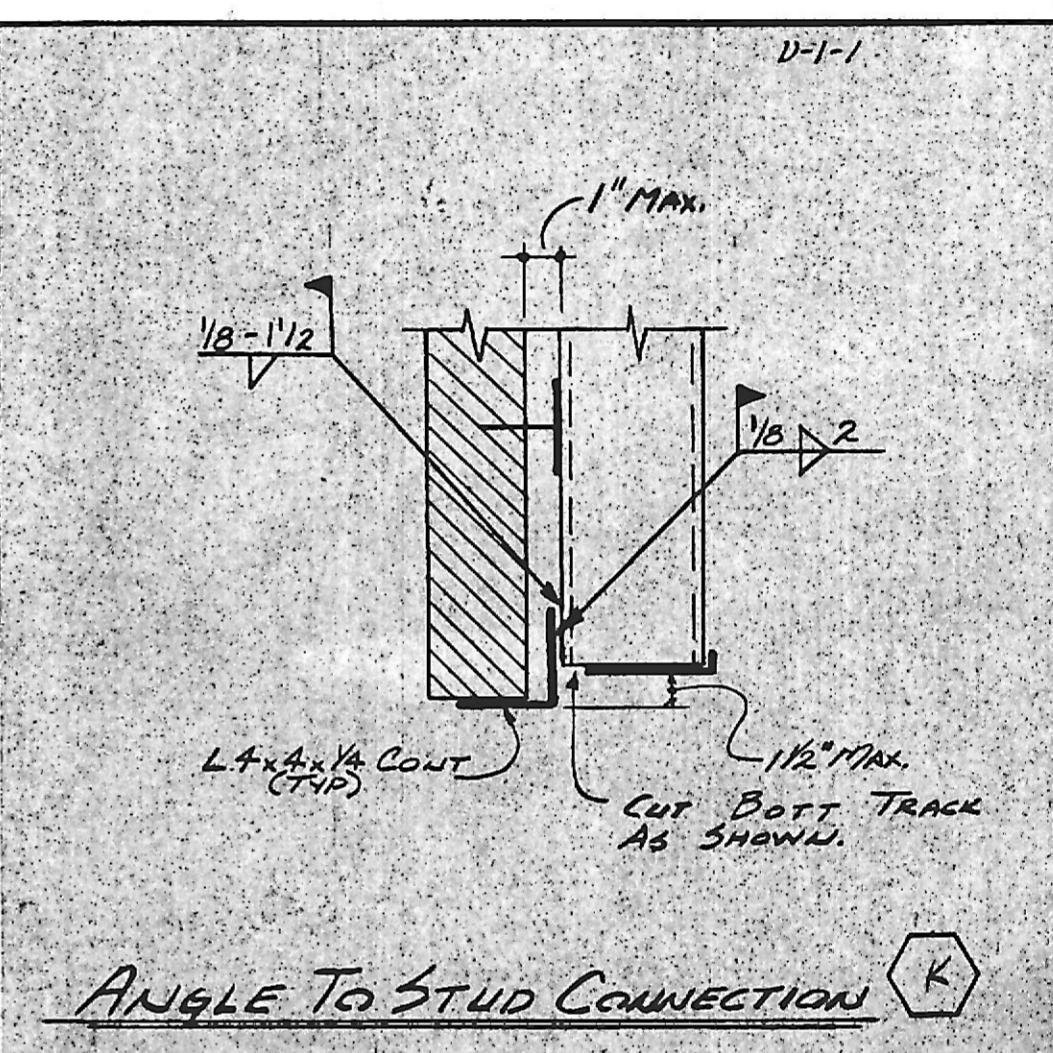
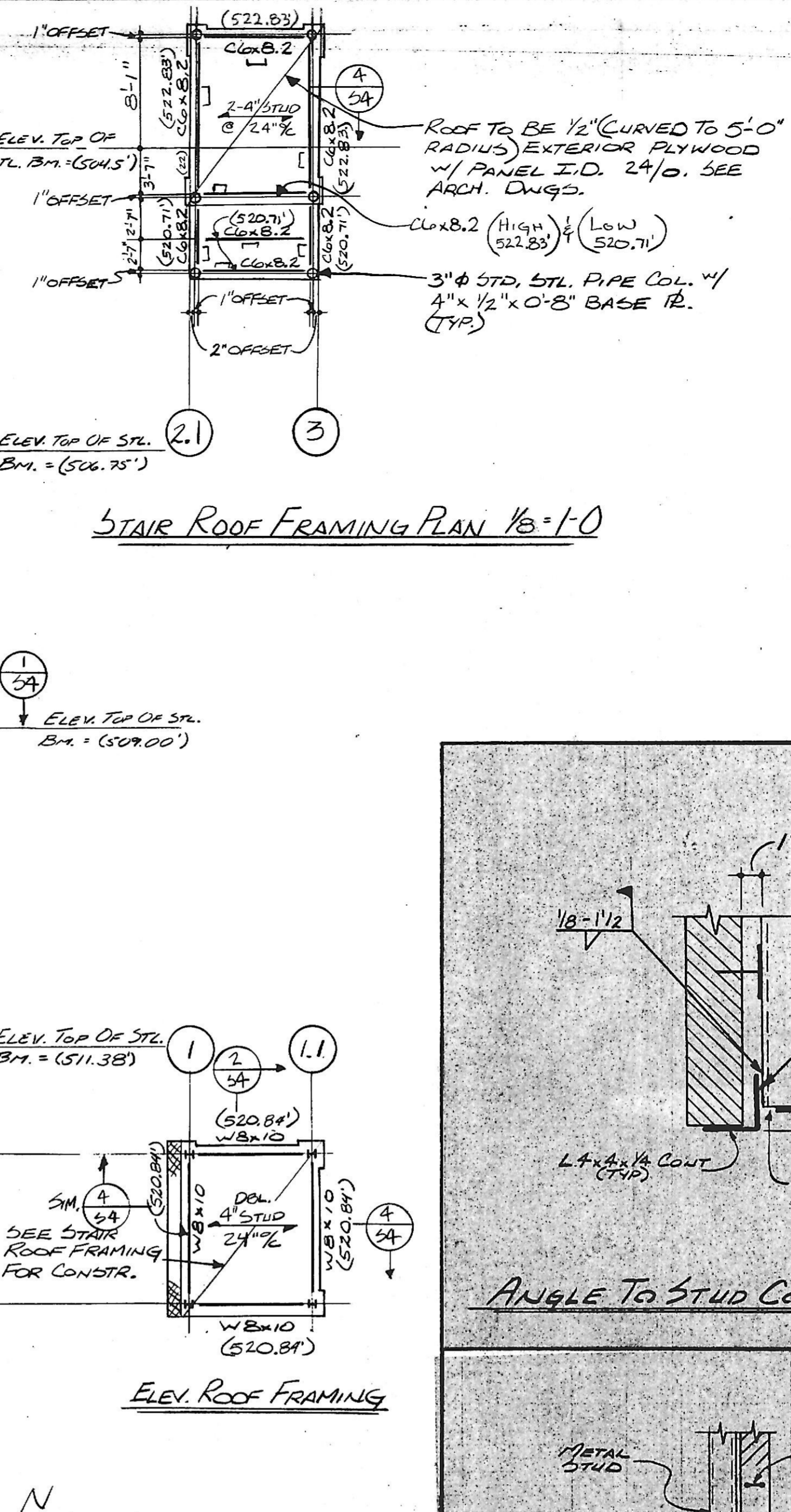
- SEE 3RD & 4TH FL. PLAN FOR NOTES.

ROOF FRAMING PLAN 1/8" = 1'-0"

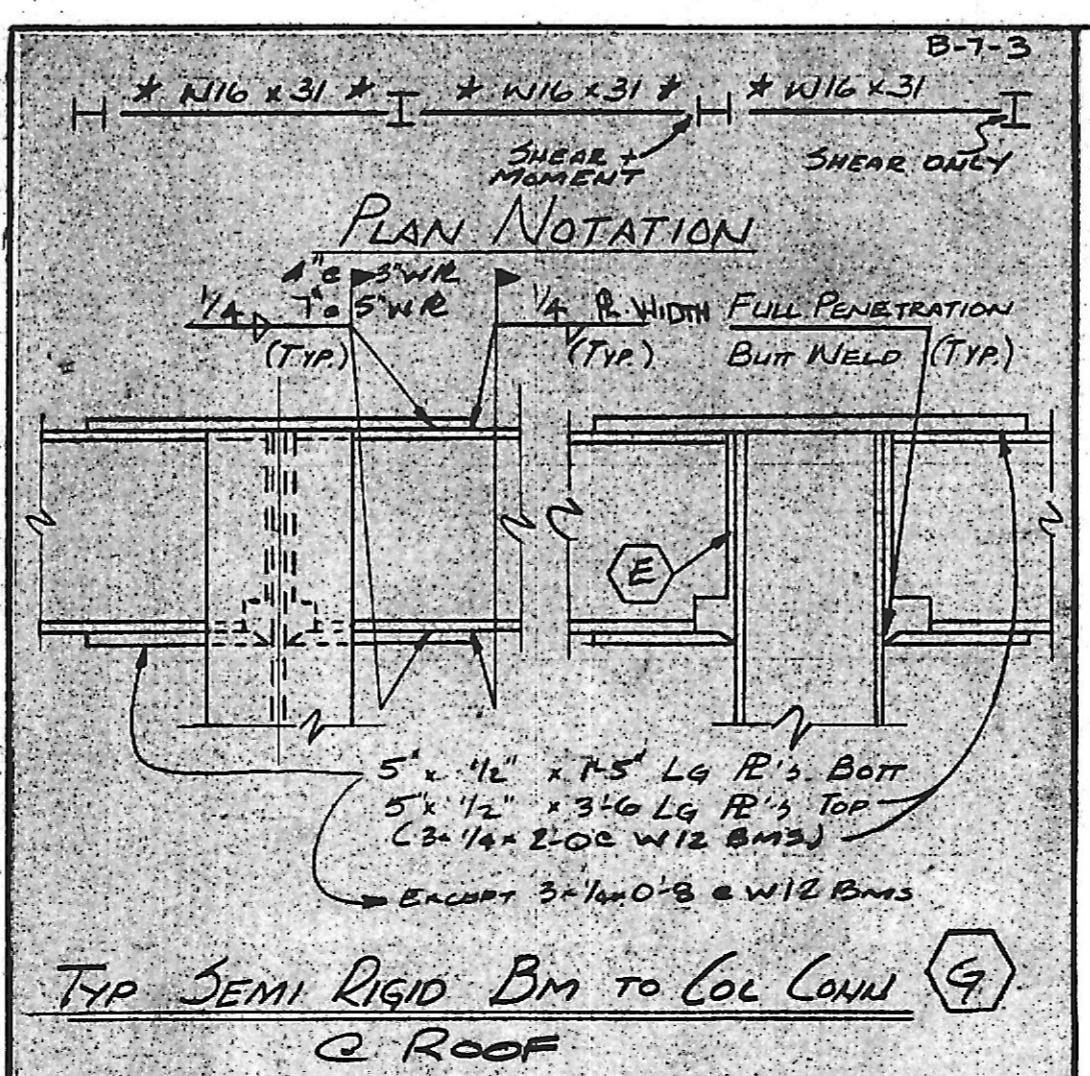
- ENTIRE ROOF SHALL BE 1 1/2" - 22 GA. GALV. DECK  
Min. S<sub>x</sub> = .13 IN<sup>3</sup>, Min. I<sub>x</sub> = .14 IN<sup>4</sup> - 15 SPAN  
Min. S<sub>x</sub> = .13 IN<sup>3</sup>, Min. I<sub>x</sub> = .12 IN<sup>4</sup> - 25 SPAN  
Min. S<sub>x</sub> = .11 IN<sup>3</sup>, Min. I<sub>x</sub> = .16 IN<sup>4</sup> - 35 SPAN.
- TOP OF STEEL JOISTS 1/2" BELOW TOP OF METAL DECK UNLESS OTHERWISE NOTED IN PLAN THUS (-3").
- SEE PLAN FOR ELEVATION TOP OF STEEL BEAMS.
- PROVIDE JOIST ON CENTER LINE COLUMN (TYP).

NOTE: ALL STUD BRG. WALLS TO BE 4" LIGHT GAGE GALV. STUDS @ 16" O.C. SEE GENERAL NOTES FOR ADDN. INFO. (TYP. U.N.D.O.)

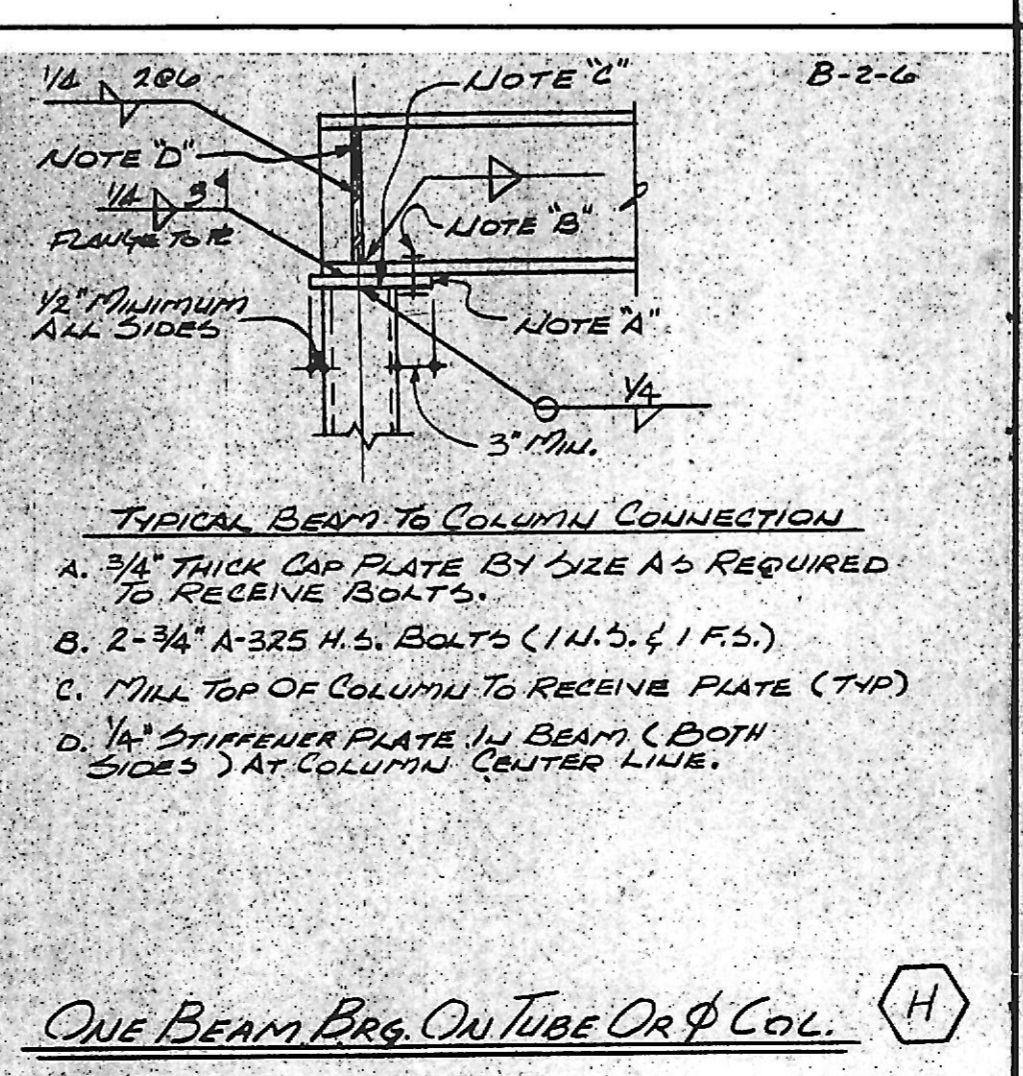
STAIR ROOF FRAMING PLAN 1/8" = 1'-0"



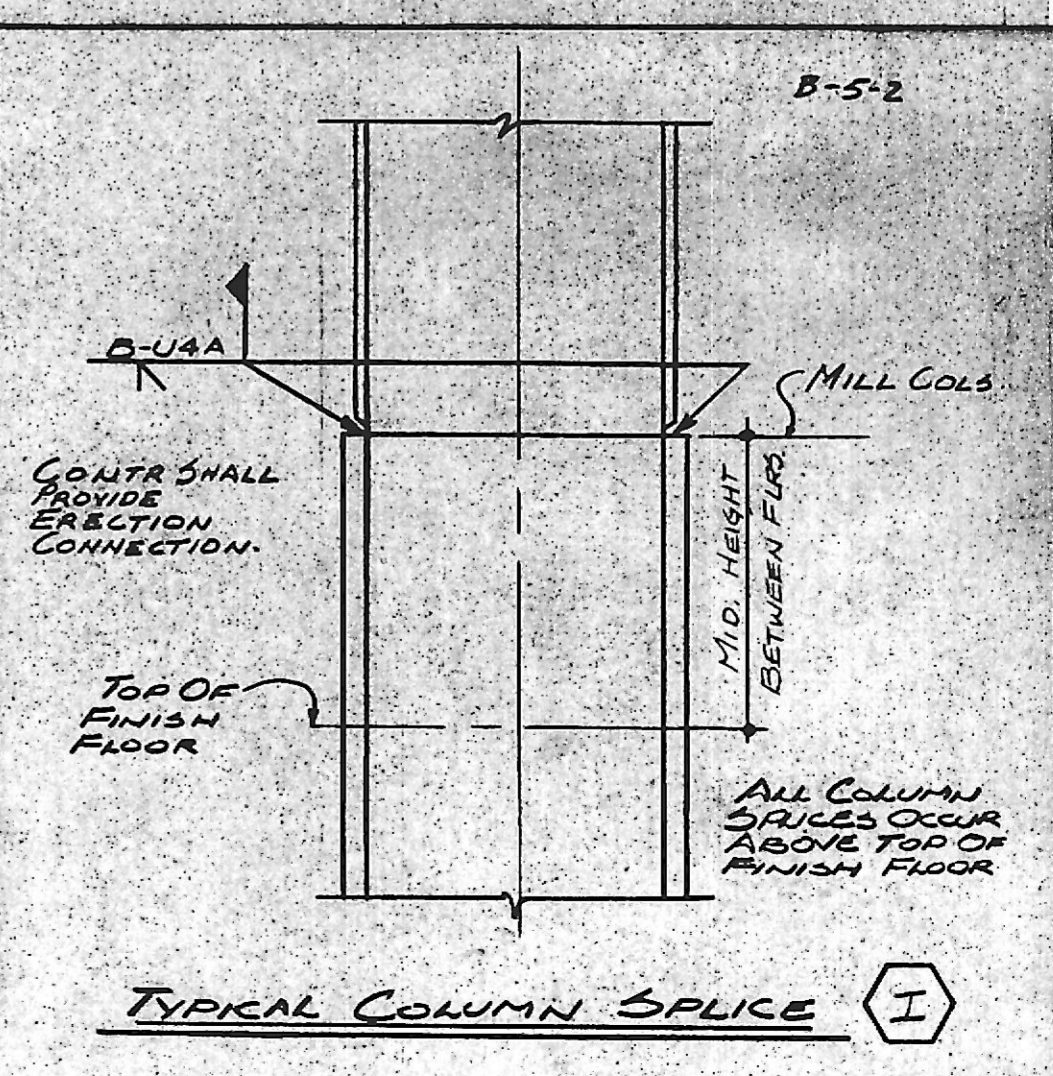
- VEENER ANCHOR DN 10 & VEE THE CAS MANUFACTURED BY HONOLULU CHAIRING INC. OR APPROVED EQUAL AT 16" O.C. VERTICALLY AT END STUD. ATTACH TO METAL STUD WITH 1/2" DIA. SCREWS. THIS SHALL HAVE 3" MINIMUM ENDSMENT IN MASONRY.
- DUR O. WALL AT 16" O.C. VERTICALLY IN ALTERNATE COURSES FROM VEENER TIES. (SEE MASONRY NOTES)



TYP SEMI RIGID BM TO COL CORR 2 ROOF



ONE BEAM BRG. ON TUBE OR Φ COL. H



TYPICAL COLUMN SPICE I

SKARDA & ASSOCIATES  
structural engineers  
4806 YORK ROAD  
BALTIMORE, MARYLAND 21212  
301-435-9330

Lapicki-Smith  
ASSOCIATES, P.A.

THE PROFESSIONAL CENTER  
211 WEST FAYETTE STREET  
BALTIMORE, MARYLAND 21201  
(301) 685-4900

project no. 85.07

22 W. ALLEGHENY  
22 WEST ALLEGHENY  
LIMITED PARTNERSHIP  
DEVELOPER

7707 GRASTY RD.  
FRESVILLE MD, 21208  
301-488-2267

drawing title  
ROOF & THIRD FLOOR  
FRAMING PLAN &  
DETAILS

date  
REV. 12/11/85

drawing no.  
S-2