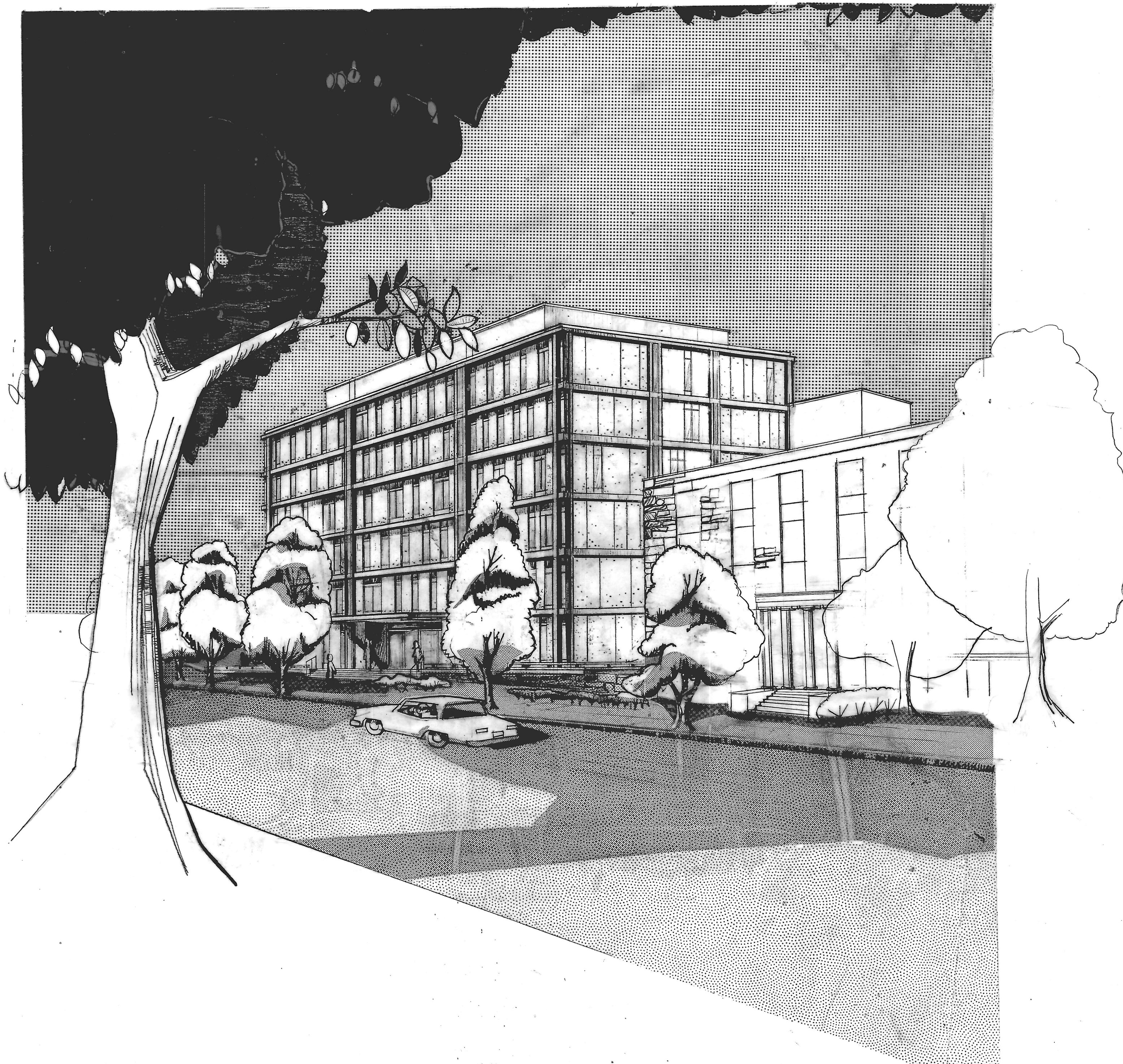


OFFICE BUILDING FOR NOTTINGHAM FARMS INC.



REVISIONS

NO.	DATE	ITEM	REF.

FIRM	SEAL
DESIGNED BY	
DRAWN BY	
CHECKED BY	
APPROVED BY	

**CHRISTIE,
NILES &
ANDREWS**
22 West Pennsylvania Ave.
Towson 4, Maryland
"Courtyard",
2118 Massachusetts Ave.
N.W., Washington 8, D.C.
(301) 823-7862
(202) 332-4442
ARCHITECTS.

OFFICE BUILDING
FOR
NOTTINGHAM FARMS INC.
101 W. PENNSYLVANIA AVE.
TOWSON, MD.

JOB NO.	SCALE	DATE	LAST REV.