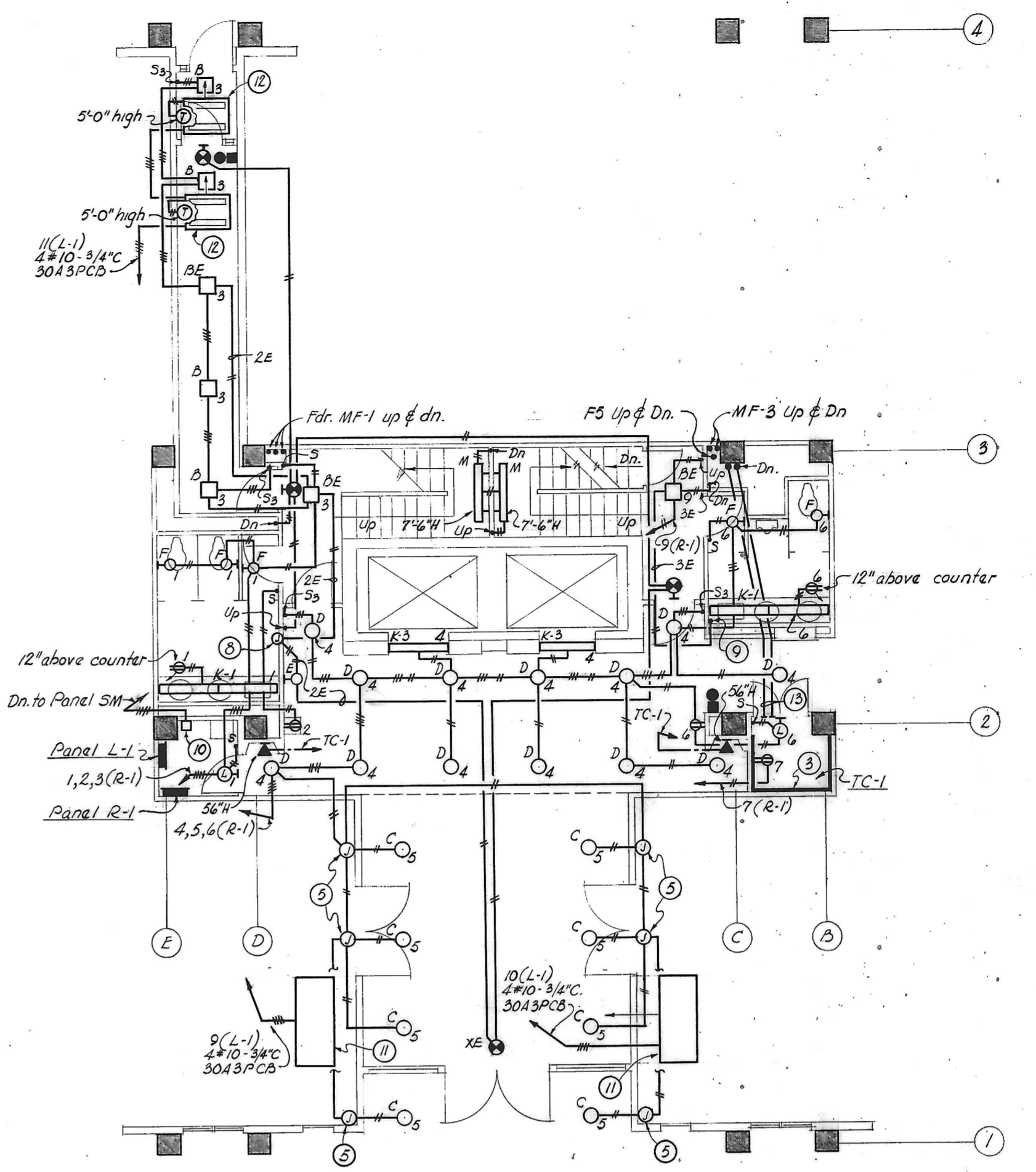


FIRST FLOOR PLAN (AT FLOOR)

- ① Provide connection from duct to power wiring in counter.
- ② Provide connection from duct to telephones in counter.
- ③ Provide panel with 12-20AIPCB's with 100A 3P main CB. Tap existing feeder to R-1 (4#4/0) & extend 4#2-2" to new panel R-1A.

MICROFILMED



FIRST FLOOR PART PLAN - CORE AREA

NOTES

- ① Turn up duct in closet & connect directly to panel.
- ② Turn up duct in closet & connect to panel via 4" x 4" screw cover wire trough.
- ③ 3/4" Plywood board (8'-0" high) for Telephone equipment.
- ④ Turn up duct in closet in front of plywood board & terminate 12" above the floor.
- ⑤ Junction Box in ceiling space. Wiring to fixture within cellular plank.
- ⑥ All ducts running East & West shall have inserts on 2'-0" centers except blank ducts shall be provided within the corridor & main entrance areas. All other ducts shall be blank.
- ⑦ Empty 3/4" conduit.
- ⑧ 32 volt emergency riser J.B. flush in wall above ceiling. 2 riser conduits up from J.B.
- ⑨ Up to 32 volt emergency J.B. above.
- ⑩ Selector Switch & Pilot Light for Snow Melting control - see Dwg. E-5.
- ⑪ Type "A" Unit Heater - see Dwg. M-2 for mounting.
- ⑫ Type "B" Unit Heater
- ⑬ 2-4" Telephone conduits - terminate in closet with bushings.
- ⑭ 1" C. to Telegate cabinet from floor box for Telegate. Floor box Russell & Stoll FB303B.
- ⑮ Telegate cabinet 31" W. x 48" H. x 10" D. - 120V-1P.
- ⑯ Pass & Seymour #4700 duplex 15A-125K turnlock receptacle. Mount receptacle & adjacent duplex 6" below Telegate cabinet.
- ⑰ 3/4" C. to telephone terminal cabinet.
- ⑱ 1" C. from wall outlet for Telegate to Telegate cabinet. Outlet shall be the same as wall telephone outlet except device plate shall have 1" gridded hole.
- ⑲ Provide Walker #300AL series outlet with 2 duplex receptacles. One in each room.
- ⑳ Same as telephone outlet except used for telegate.

SPECIAL SYMBOLS FOR UNDERFLOOR DUCT SYSTEM

Symbol	Description
⊕	JUNCTION BOX FOR 2 SIZE 4 DUCTS & 1 SIZE 2 DUCT
⊙	JUNCTION BOX FOR 1 SIZE 4 DUCT & 1 SIZE 2 DUCT
⊖	SIZE 4 DUCT - TELEPHONE
⊖	SIZE 2 DUCT - TELEPHONE
⊖	SIZE 2 DUCT - POWER
⊖	TEE JUNCTION BOX FOR SIZE 2 DUCT - POWER
⊖	DUPLEX RECEPTACLE AND/OR TELEPHONE OUTLET IN SERVICE FITTING ON UNDERFLOOR DUCT.

REVISIONS

NO.	DATE	ITEM	REF.
1	8/13/67	ALEX. BROWN & SONS	△
2	9/22/67	ADD OUTLETS	△
3	10/12/67	REVISED OUTLET LOC.	△
4	11/19/68	MERCANTILE SAFE DEPT. TR.	△

FIRM H.A. INC. SEAL H.A. JOB NO. N-16
 DESIGNED BY A B M
 DRAWN BY J H B L
 CHECKED BY R B
 APPROVED BY R B

ARCHITECTS
 CHRISTIE, NILES & ANDREWS
 22 W. Pennsylvania Ave. Towson, Md. 21286
 1047 31st Street, N.W. Washington, D.C. 20007

OFFICE BUILDING FOR NOTTINGHAM FARMS INC.

102 W. PENNSYLVANIA AVE. TOWSON, MARYLAND 21204

FIRST FLOOR PLAN

JOB NO.	6522	E-2
SCALE	1/8" = 1'-0"	
DATE	SEPT. 27, 1966	
LAST REV.	JUNE 19, 1968	