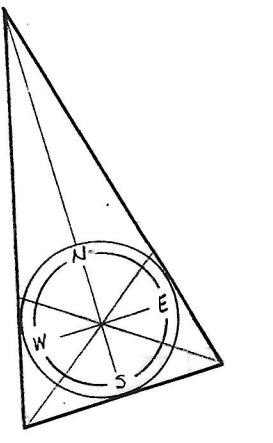


NOTES

- ① Lighting Fixtures:  
Type R - recessed incandescent wall wash with 150 watt E-40 flood lamp. Furnish Gotham #5672.
- ② 1000 watt-120v wall mt'd dimmer. Provide GE #D1-101.
- ③ Lighting Fixture, Type T - 2'x4' fluorescent w/ 4-40w lamps, Guth Cat No. CDP5147/FF for ceiling system used.



REVISIONS

NO.	DATE	ITEM	REF.
1	8/2/67	ALEX. BROWN & SONS	△
2	9/27/67	ADD DIMMER	△
3	4/19/68	MERCANTILE SAFE DEPT	△
4	7/24/68	LIGHTING-MERCANTILE	△

FIRM: H. A. INC. SEAL H.A. JOB NO. N-16  
 DESIGNED BY: R.W.G.  
 DRAWN BY: R.W.G.  
 CHECKED BY: A.C.H.  
 APPROVED BY: R.B.

STRUCTURAL ENGINEERING  
 VAN RENSSLAER P. SAXE  
 1701 ST. PAUL ST. BALTO, MD. 21202

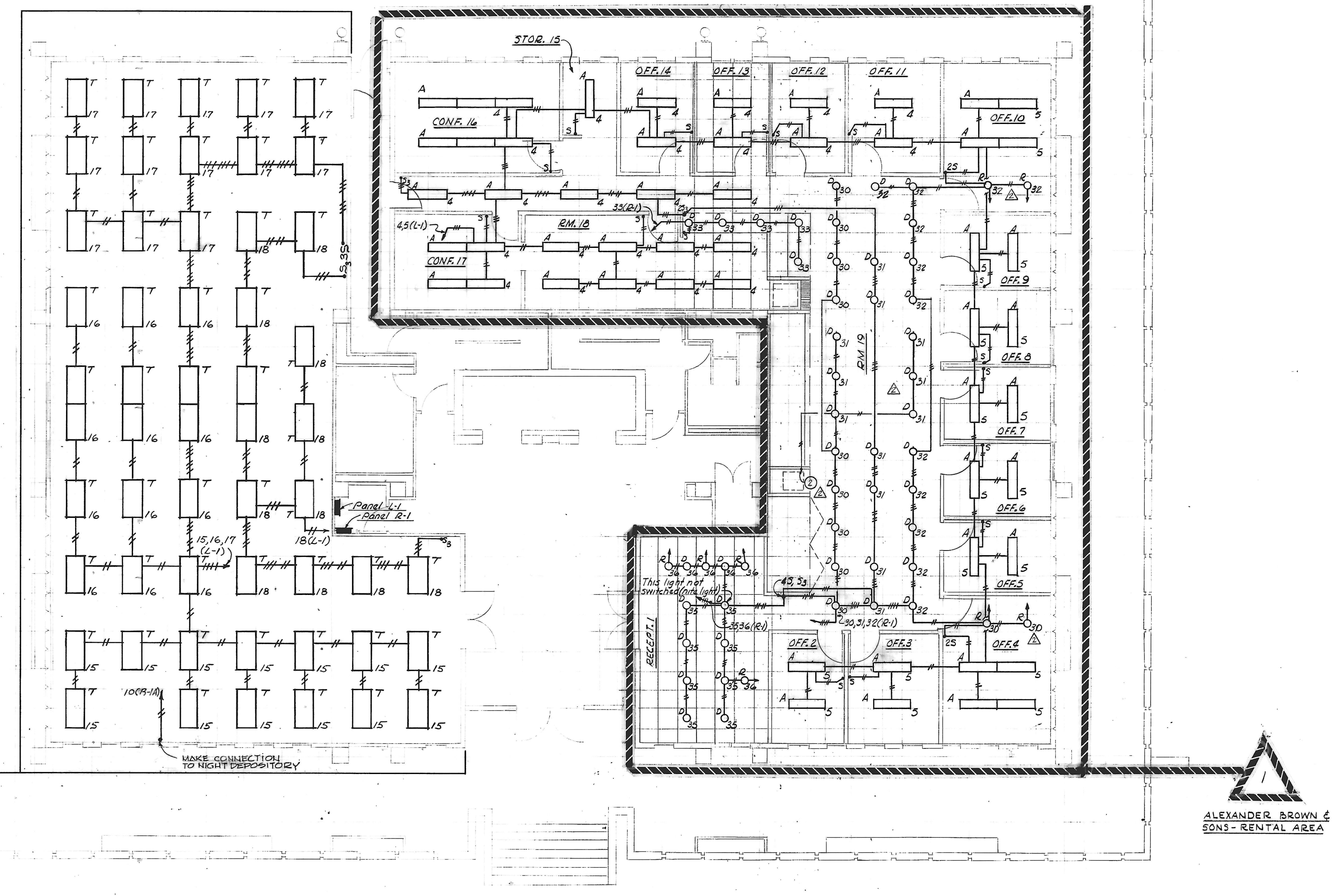
MECHANICAL-ELECTRICAL ENGINEERING  
 HENRY ADAMS, INC.  
 2315 ST. PAUL ST. BALTO, MD. 21218

CHRISTIE, NILES & ANDREWS ARCHITECTS  
 22 N. CALVERT ST. BALTO, MD. 21202  
 1647 31st Street, N.W. Washington, D.C. 20007

OFFICE BUILDING FOR NOTTINGHAM FARMS INC.  
 102 W. PENNSYLVANIA AVE. TOWSON, MARYLAND 21204

FIRST FLOOR PLAN

JOB NO.	6 5 2 2	E-2A
SCALE	1/8" = 1'-0"	
DATE	AUG., 1967	
LAST REV.	JUNE 19, 1968	



FIRST FLOOR PLAN (AT CEILING)  
 Scale: 1/8" = 1'-0"

MICROFILMED