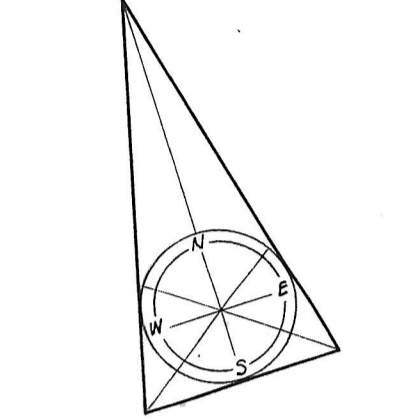


NOTES

- ① 18" wide divided trench header (6" power, 10" telephone) with grammets to floor calls.
- ② 27" wide trench header with grammets to floor calls. Provide panel connection unit & 3" x 18" duct riser assembly terminated 12" above finished floor.
- ③ 9" wide trench header with grammets to floor calls. Provide panel connection unit & 2 1/2" x 5" duct riser assembly complete to panel.
- ④ 9" wide trench header with grammets to floor calls.
- ⑤ 32 volt emergency J.B. flush in wall above ceiling. Riser conduits up & dn. from J.B.
- ⑥ 3/4" plywood board (8'-0" high) for telephone equipment.
- ⑦ 4" nipple through floor - typical for Telephone Closets TC-2 thru TC-6.
- ⑧ Reheat coil & 30A MF-53 (located adjacent to access panel).
- ⑨ Center switch 6" over elevator call button station.
- ⑩ Coordinate markers with mechanical piping in this area.
- Ⓐ Provide Walker #508 outlet for floor telephones unless otherwise indicated.
- Ⓑ Provide Walker #509 outlet.
- Ⓒ 1" to TC-2.
- Ⓓ Provide 10-1P-20A-CB. in Panel R-2 in addition to those shown on Dwg. E-7.
- Ⓔ Telephone outlets in partitions with 1" conduit entering same shall be 4 1/4" boxes with single gang cover.



REVISIONS			
NO.	DATE	ITEM	REF.
1	9/11/67	H.T. CAMPBELL	Ⓐ

FIRM H.A. INC. SEAL H.A. JOB NO. N-16
 DESIGNED BY A B M
 DRAWN BY J HBL
 CHECKED BY RB
 APPROVED BY RB

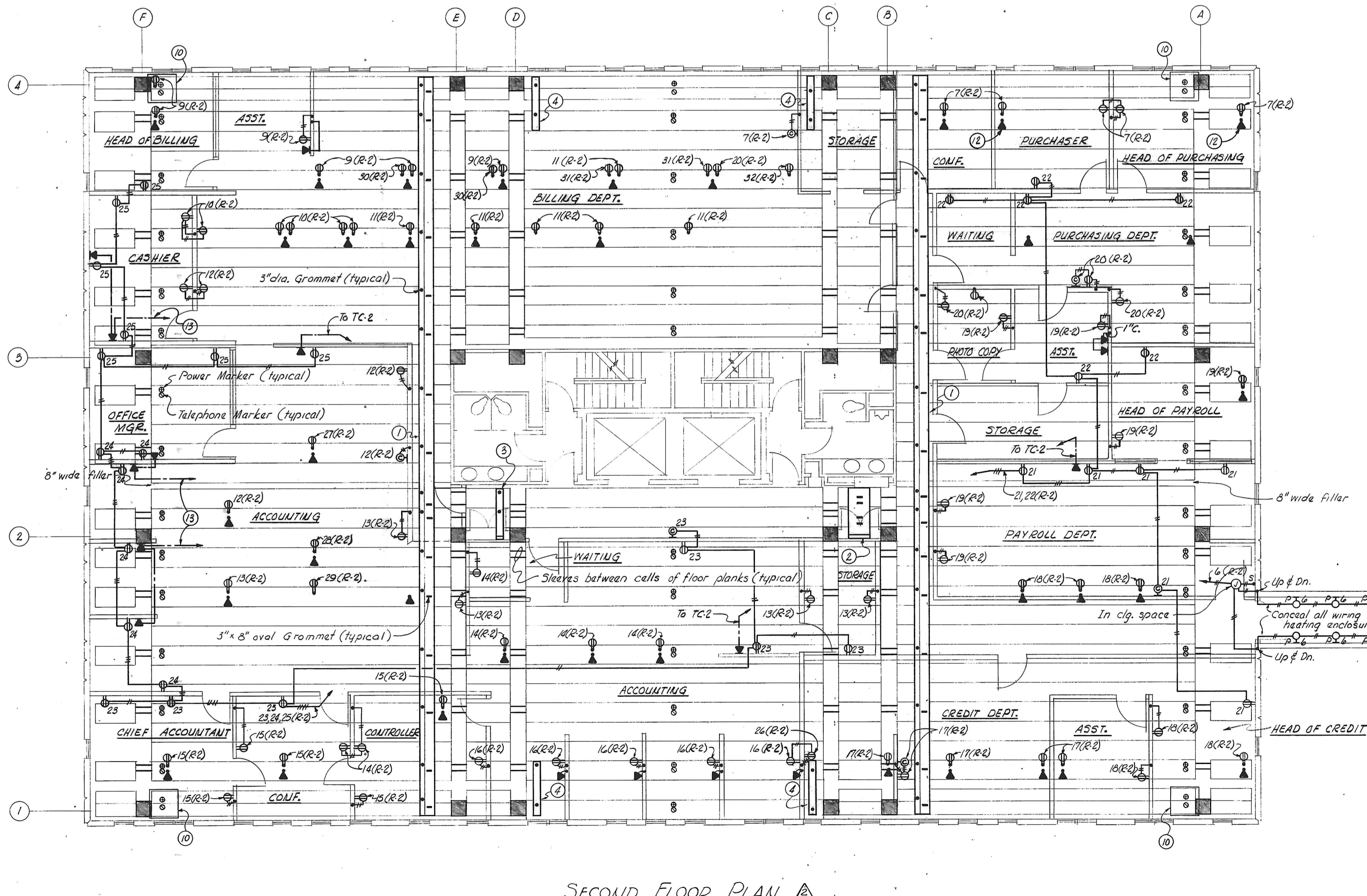
STRUCTURAL ENGINEERING
 VAN RENSSLAER P. SAXE
 1701 ST. PAUL ST. BALTO, MD. 21202

MECHANICAL-ELECTRICAL ENGINEERING
 HENRY ADAMS, INC.
 2315 ST. PAUL ST. BALTO, MD. 21218

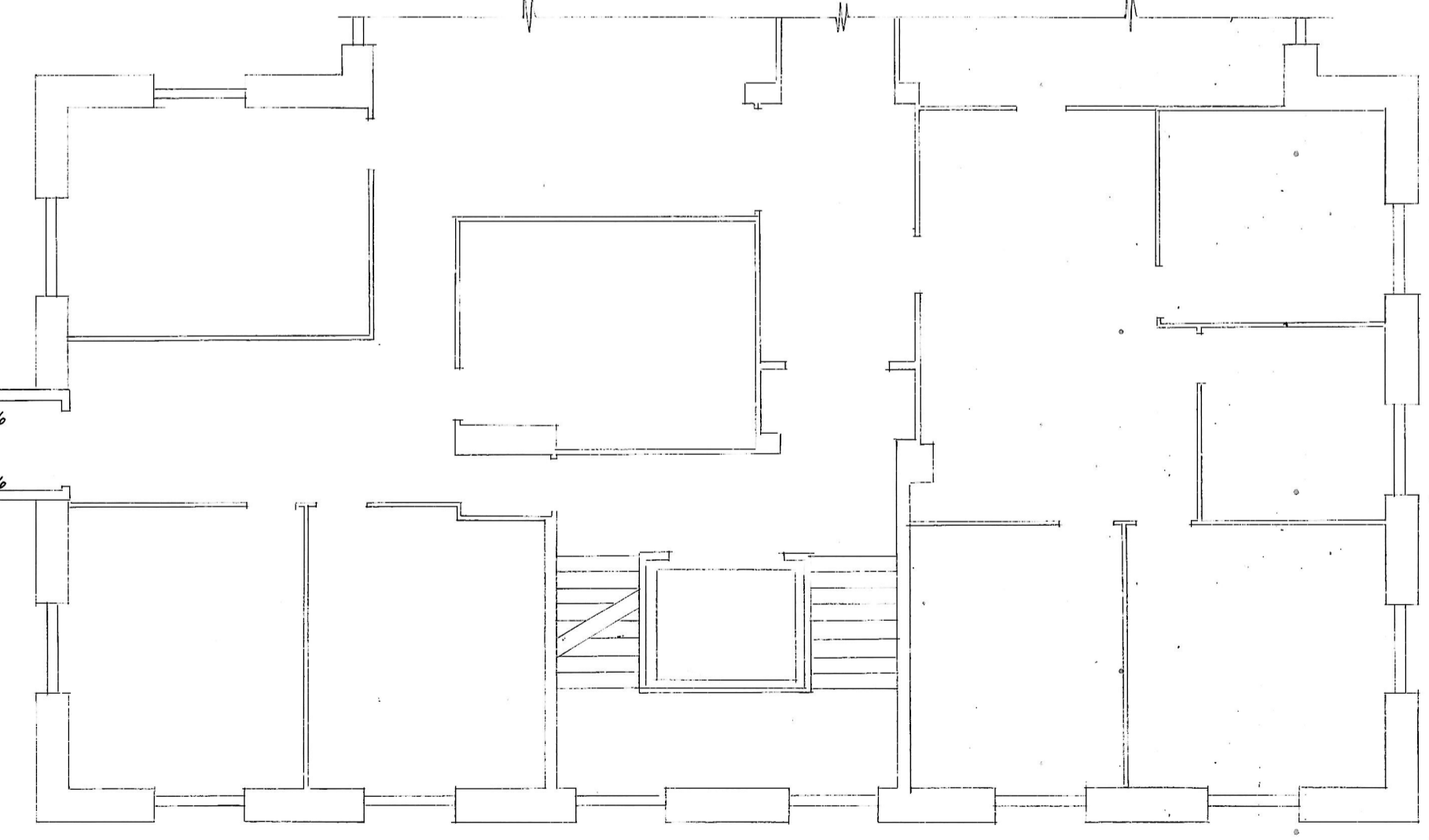
CHRISTIE, NILES & ANDREWS ARCHITECTS
 22 N. Pennsylvania Ave., Towson, Maryland 21286
 1047 31st Street, N.W., Washington, D.C. 20007
 (801) 824-7462 / 707 442-3112

OFFICE BUILDING
 FOR
NOTTINGHAM FARMS INC.
 102 W. PENNSYLVANIA AVE.
 TOWSON, MARYLAND 21204

SECOND FLOOR PLAN	
JOB NO. 6522	E.3
SCALE 1/8" = 1'-0"	
DATE SEPT. 27, 1964	
LAST REV. SEPT. 11, 1967	



SPECIAL SYMBOL LIST	
SYMBOL	DESCRIPTION
Ⓢ	DUPLEX RECEPTACLE AND/OR TELEPHONE OUTLET IN SERVICE RITING
Ⓢ	DUPLEX RECEPTACLE WITH AFTERSET INSERT WITH REDUCER AND 3/4\"/>



EXISTING SECOND FLOOR PART PLAN - CAMPBELL BUILDING

SECOND FLOOR PLAN

MICROFILM