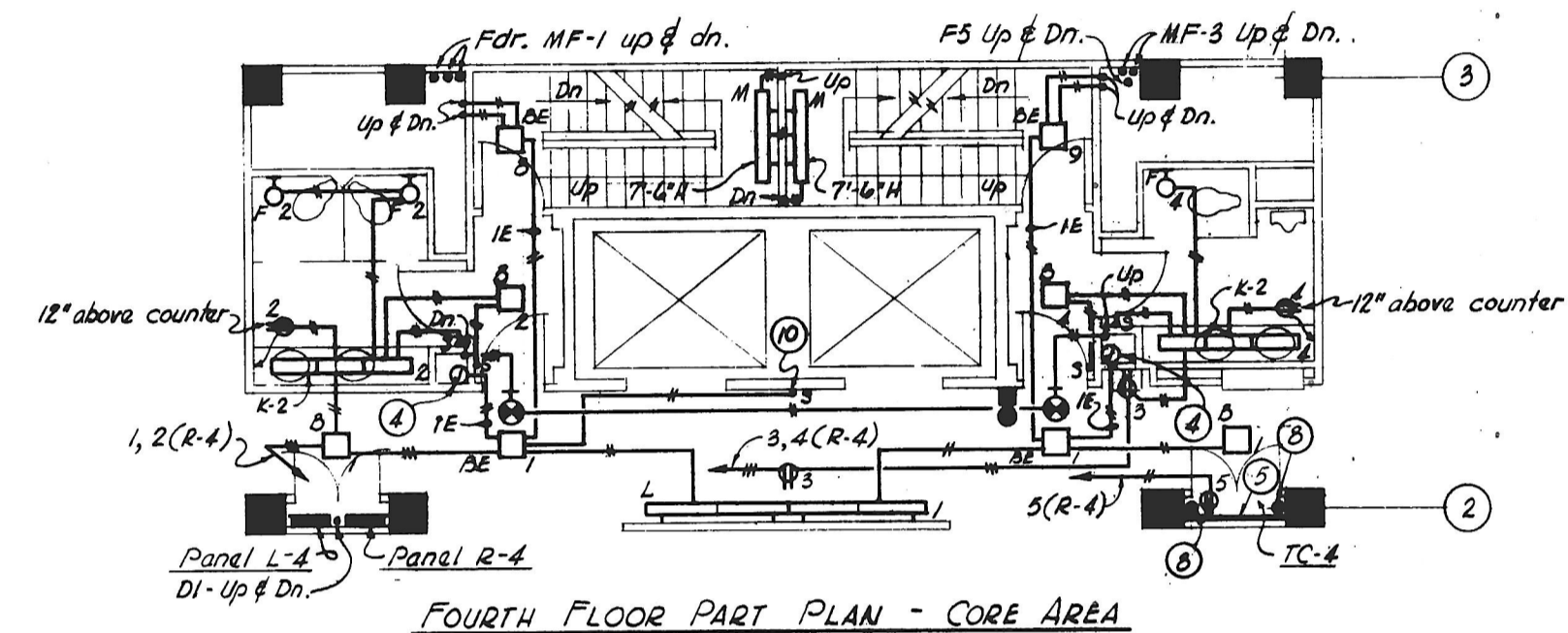
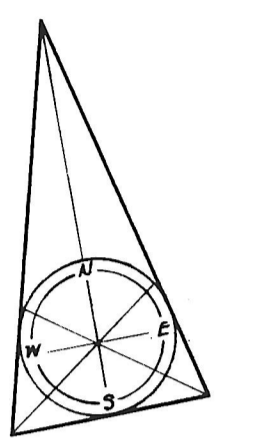


ALEX BROWN & SONS  
 FOURTH FLOOR PLAN (AT FLOOR)  
 Scale: 1/8" = 1'-0"



**NOTES**


- ① 18" wide divided trench header (6" power, 10" telephone) with grammets to floor cells.
- ② 27" wide trench header with grammets to floor cells. Provide panel connection unit & 3" x 18" duct riser assembly terminated 12" above finished floor.
- ③ 9" wide trench header with grammets to floor cells. Provide panel connection unit & 2 1/2" x 5" duct riser assembly complete to panels.
- ④ 32 volt emergency riser J.B. flush in wall above ceiling. Riser conduits up & dn. from J.B.
- ⑤ 3/4" Plywood board (8'-0" high) for Telephone equipment.
- ⑥ J.B. for elevator car power service & telephone outlet for car telephone shall be located 10'-4" above Third Floor level. Electrical equipment shall located so as to avoid interference with Elevator equipment.
- ⑦ Provide 30" x 18" x 12" flush screw cover J.B. in wall immediately below ceiling. In each bottom entrance provide 102# Type 3 cable support properly sized for the O.D. of the wires used.
- ⑧ 4" nipple through floor.
- ⑨ Same as ⑦ except J.B. shall be 12" x 24" x 12" D.
- ⑩ Center switch 6' over elevator call button station.
- ⑪ Provide 10-1P-20A, CB. in Panel R-4 in addition to those shown on DWG E-7.
- ⑫ ADT Panel (by others) w/ 1" c. down to ADT Panel on 3rd Floor
- ⑬ Wall clock Simplex Type 58-45
- ⑭ Ceiling clock, Simplex Type 88-35
- ⑮ Two duplex outlets, one in each face
- ⑯ Same as telephone outlet but with 1" grammeted hole for tele-quote.



**REVISIONS**

NO.	DATE	ITEM	REF.
1	4-10-68	ALEX BROWN	
2	4/24/68	BRIGATE TEL. & SEC. THE MECHANICAL, ELECTRICAL, & PLUMBING	

FIRM: H.A. INC.  
 DESIGNED BY: ABM  
 DRAWN BY: JHBL  
 CHECKED BY: RB  
 APPROVED BY: RB



STRUCTURAL ENGINEERING  
 VAN RESSLAER P. BAKE  
 1701 ST. PAUL ST. BALTO, MD. 21202

MECHANICAL-ELECTRICAL ENGINEERING  
 HENRY ROARS, INC.  
 2315 ST. PAUL ST. BALTO, MD. 21218

**CHRISTIE, MOLES & ANDREWS**  
 ARCHITECTS

**OFFICE BUILDING**  
 FOR  
**NOTTINGHAM FARMS INC.**

102 W. PENNSYLVANIA AVE.  
 TOWSON, MARYLAND 21284

**FOURTH FLOOR PLAN**

JOB NO.	6522
SCALE	1/8" = 1'-0"
DATE	SEPT. 27, 1964
LAST REV.	APRIL 26 1968

MICROFILMED

E-4B