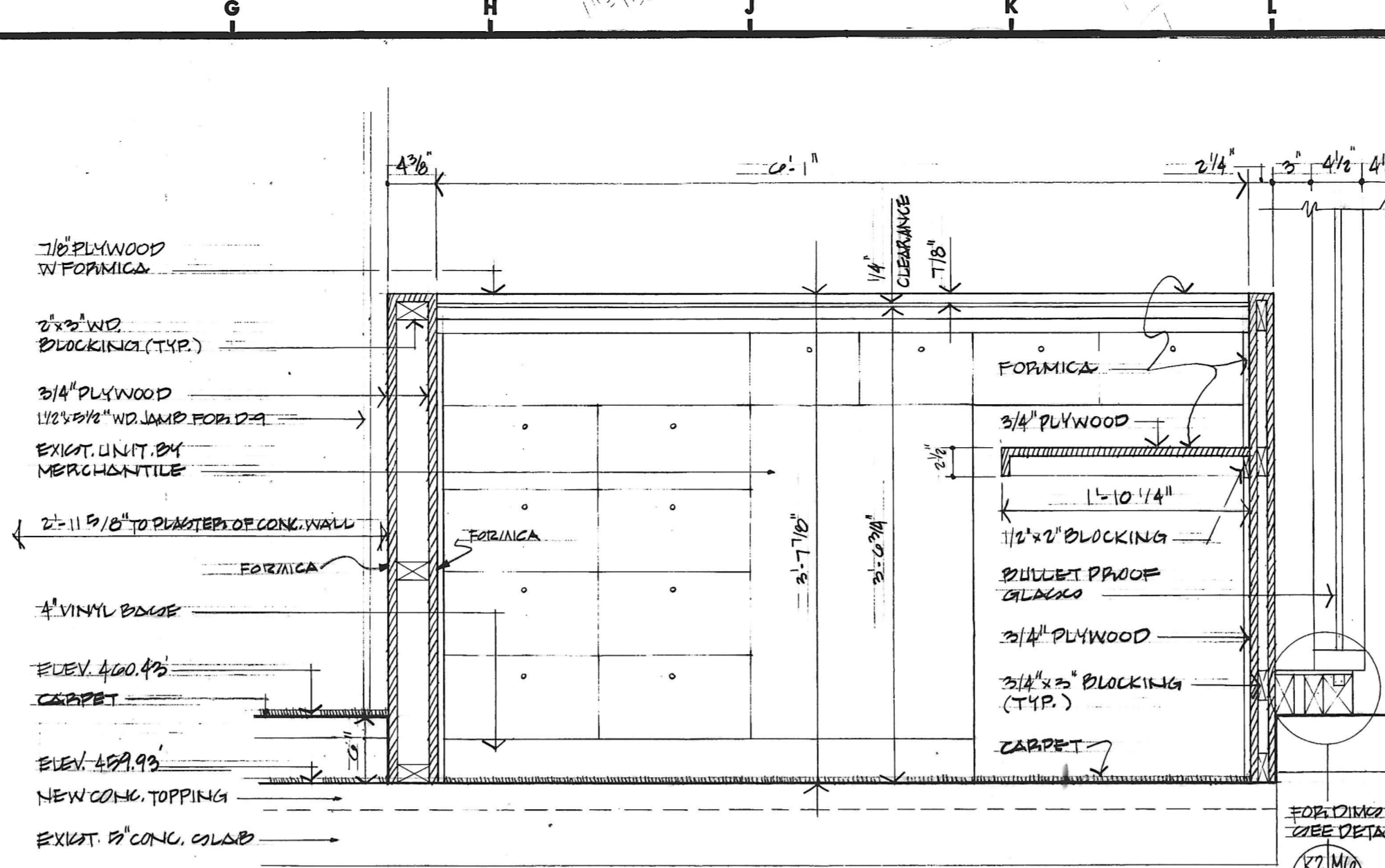
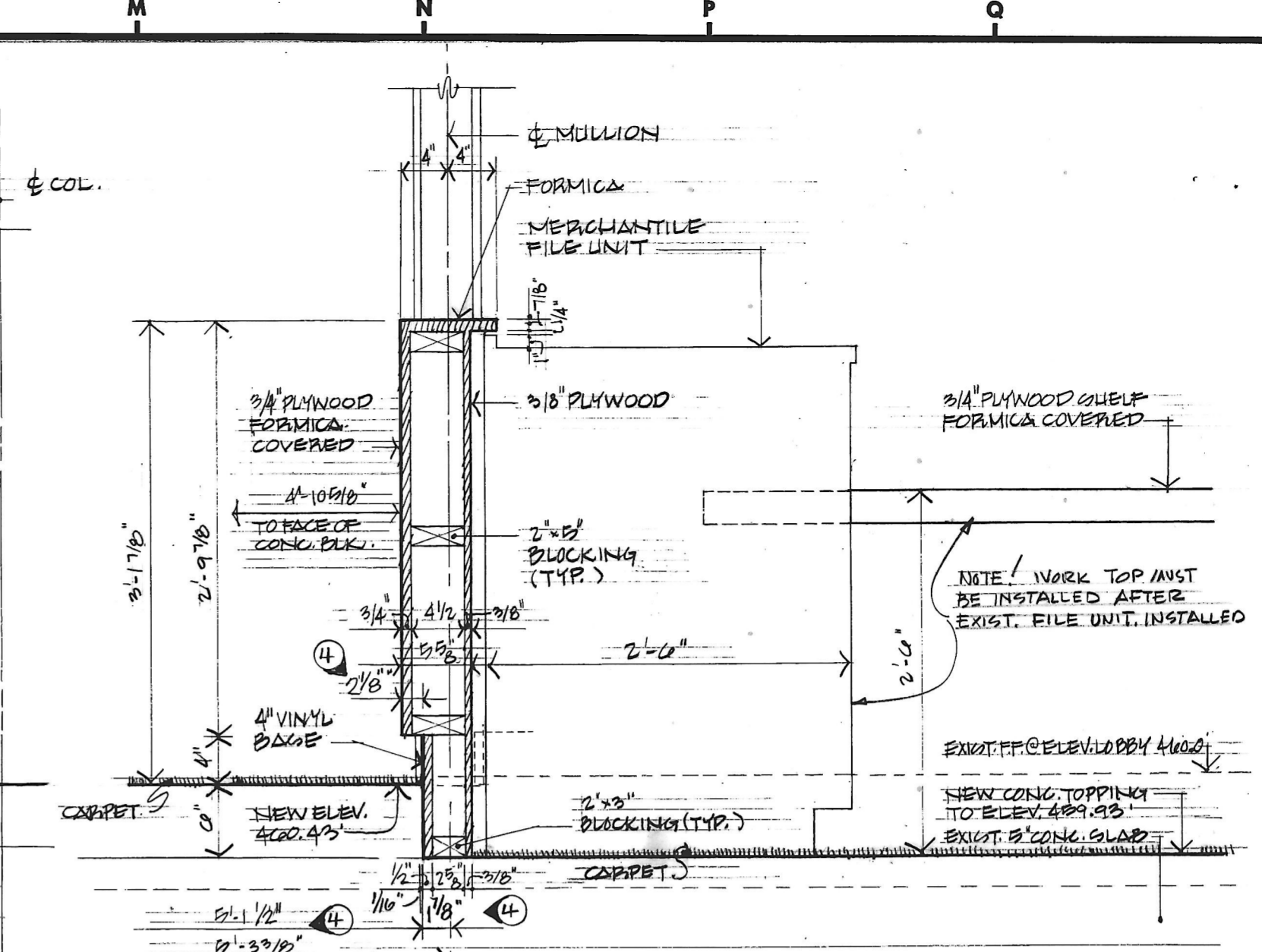


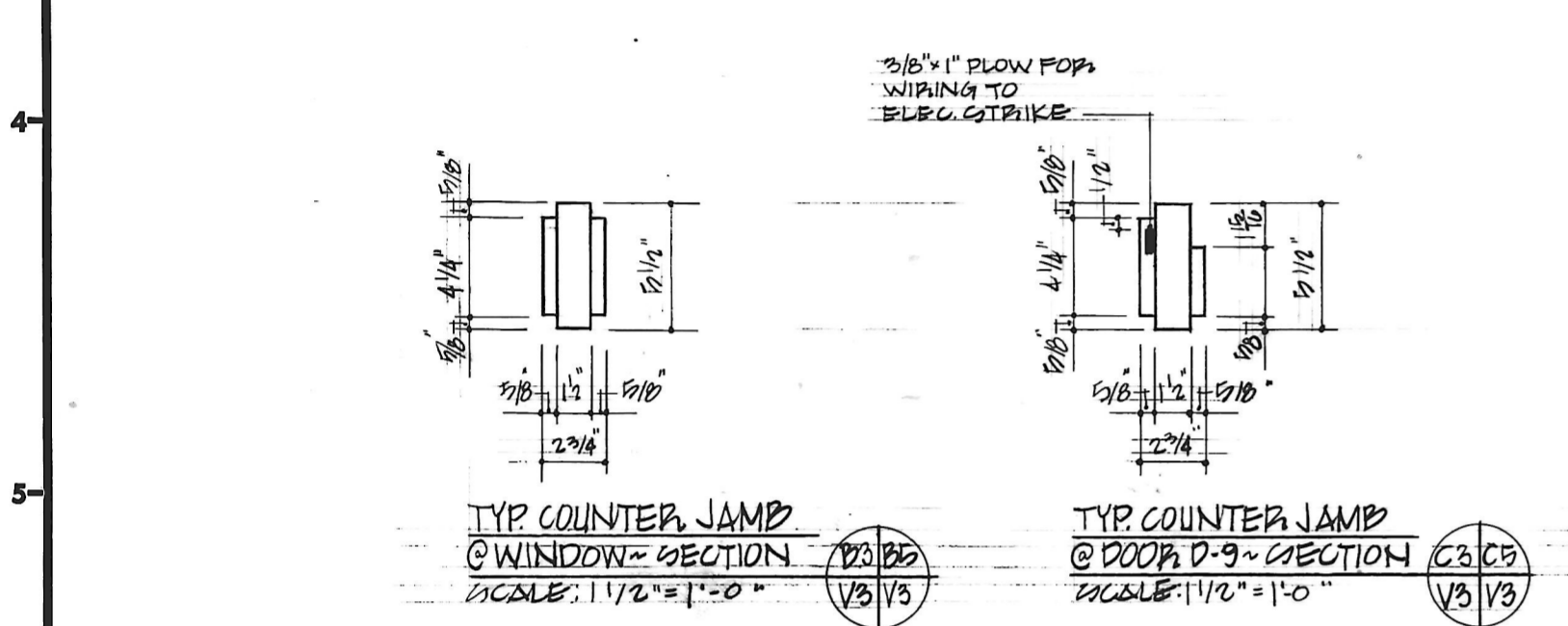
RECEPTION COUNTER FRONT ELEVATION SCALE: 1/2" = 1'-0"



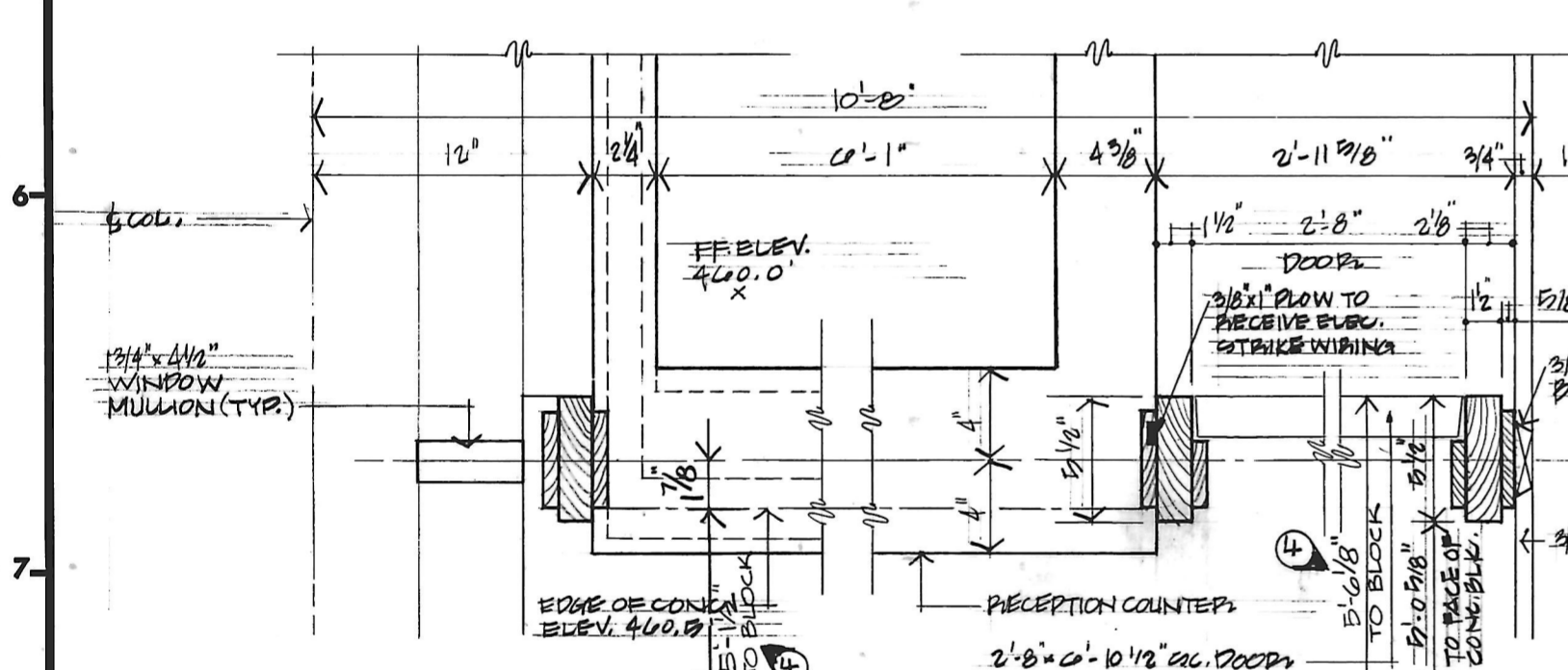
RECEPTION COUNTER ENCLOSED REAR ELEVATION - SECTION SCALE: 1/2" = 1'-0"



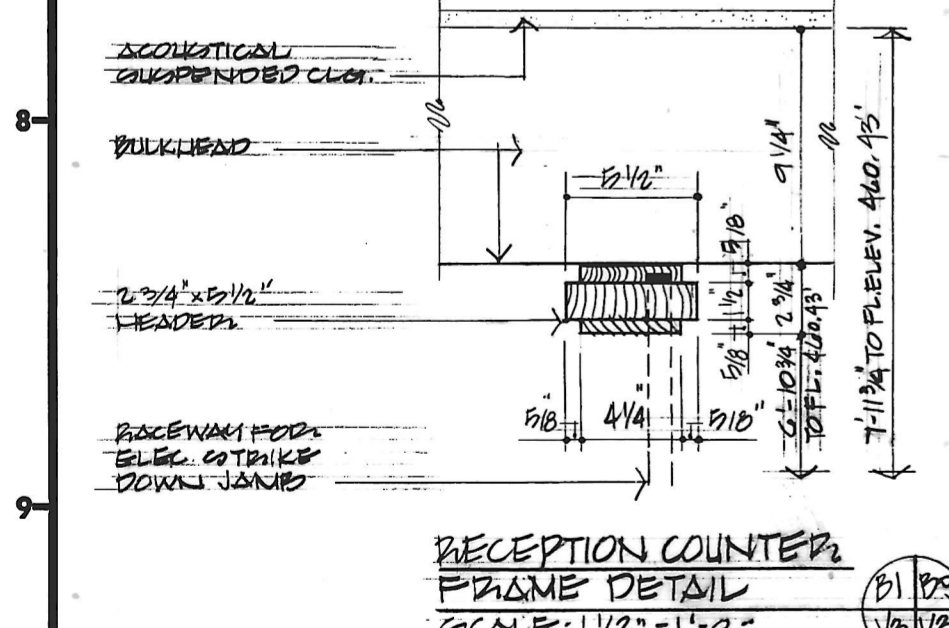
RECEPTION COUNTER SECTION SCALE: 1" = 1'-0"



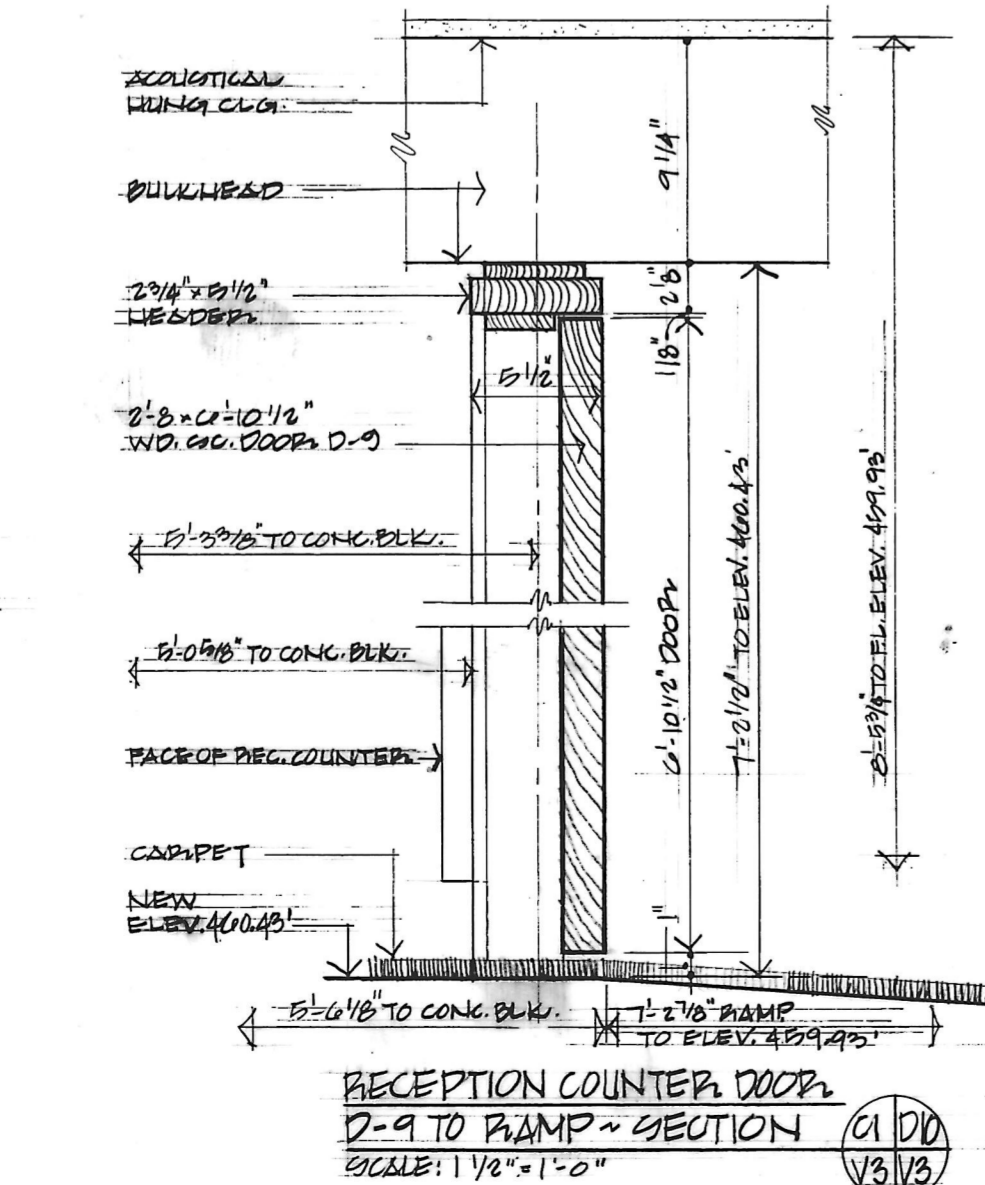
TYP. COUNTER JAMB @ WINDOW - SECTION SCALE: 1/2" = 1'-0"



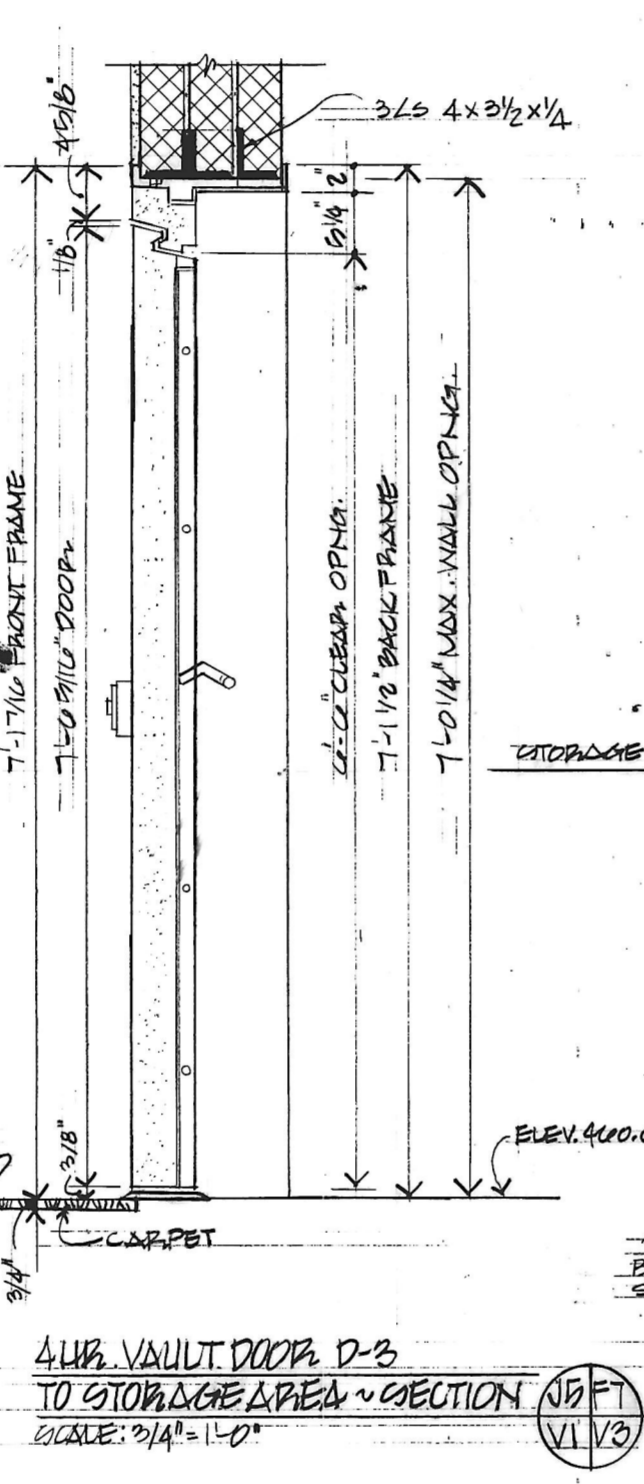
RECEPTION COUNTER - PLAN AND SECTION SCALE: 1/2" = 1'-0"



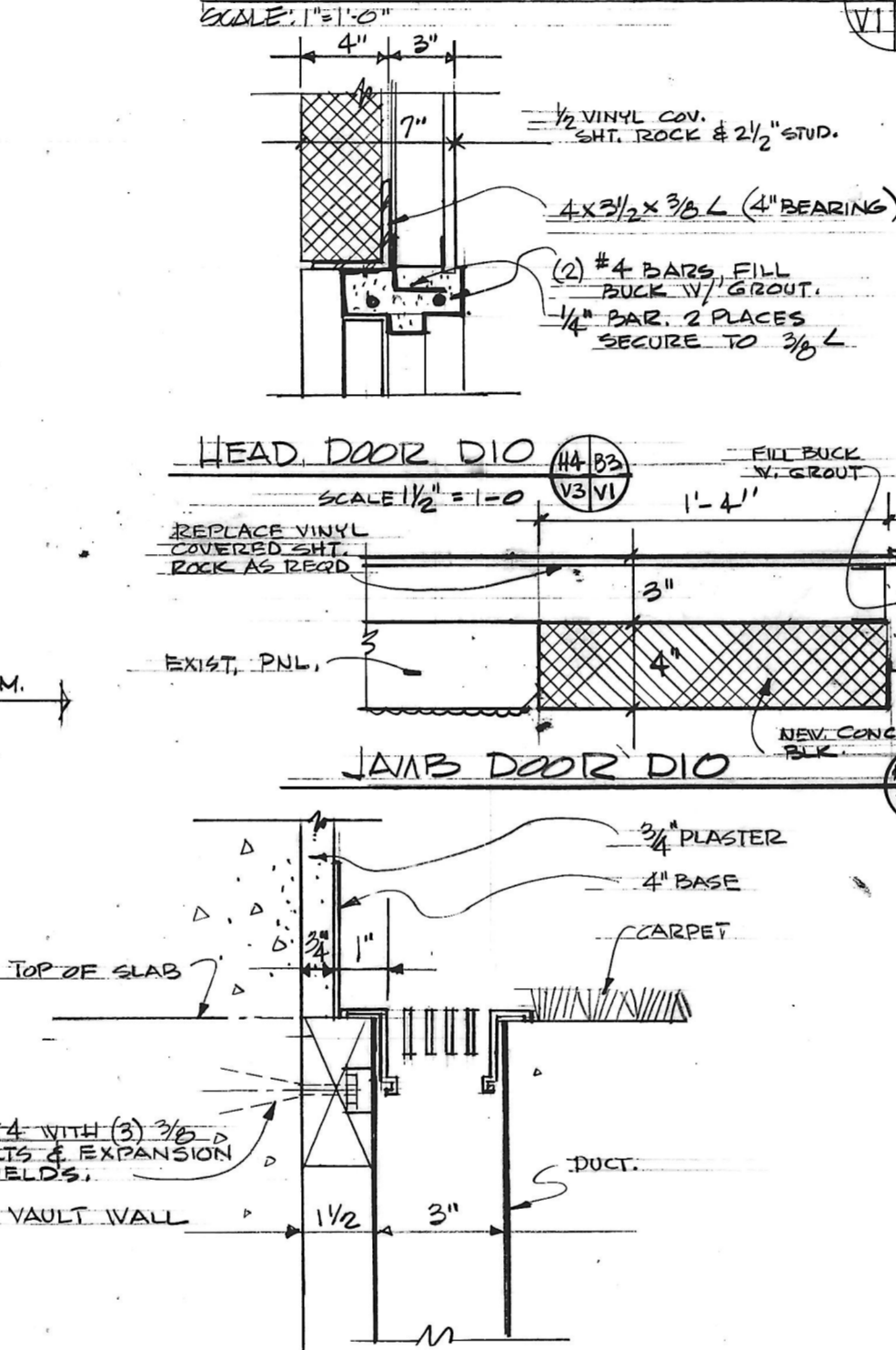
RECEPTION COUNTER FRAME DETAIL SCALE: 1/2" = 1'-0"



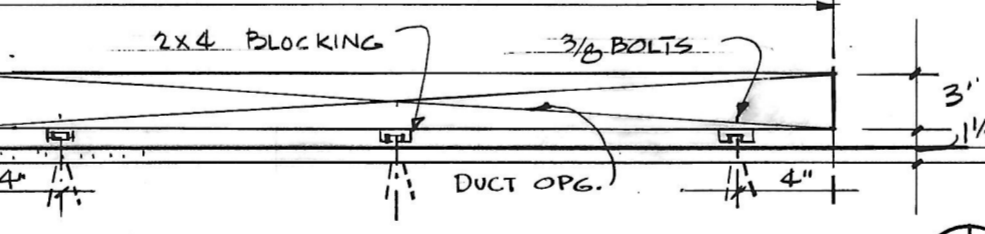
RECEPTION COUNTER DOOR D-9 TO RAMP - SECTION SCALE: 1/2" = 1'-0"



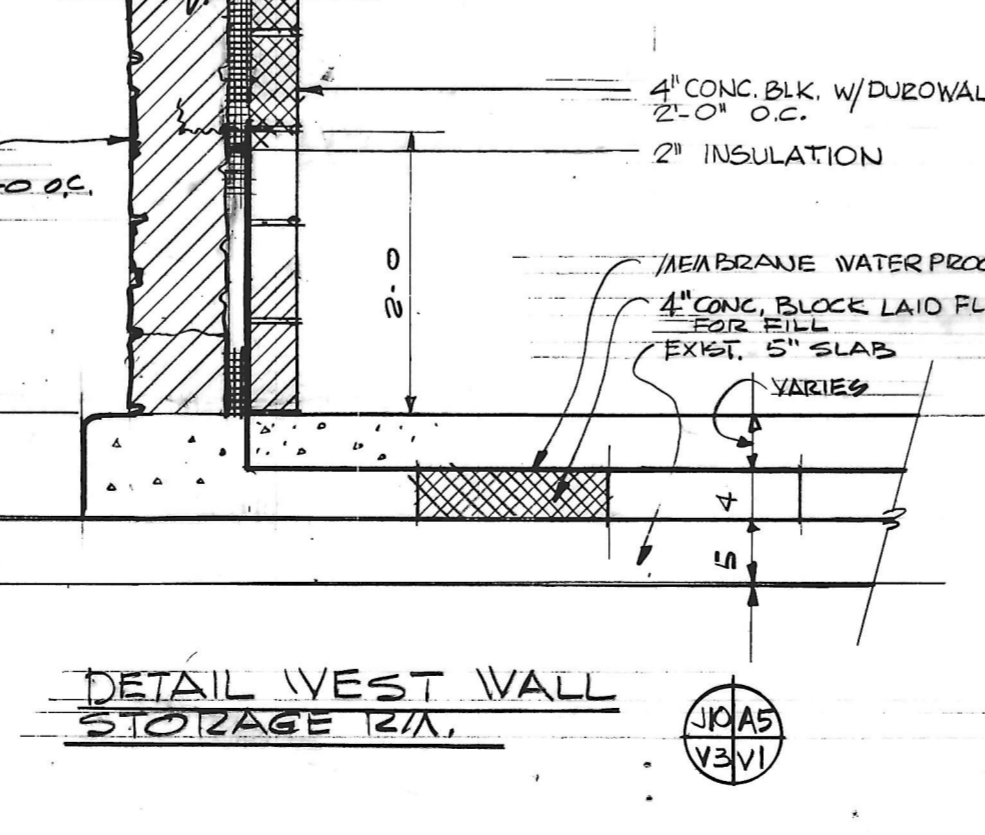
4\"/>



SECTION @ FLOOR REGISTER SCALE: 3/4" = 1'-0"



PLAN ROUGH OPENING FLOOR REGISTER SCALE: 3/4" = 1'-0"



DETAIL WEST WALL STORAGE AREA SCALE: 3/4" = 1'-0"

SPECIFICATIONS

Demolition: Removal and cutting of existing concrete slab. Removal of 2'-0" concrete panels. Removal of car bumpers. Relocation of door operators.

Concrete: All structural concrete walls to have 28 day compressive strength of 3000 psi. See drawing 2-7 of the original building specs for reinforcing and protection steel required for the vault.

Structural Steel: Provide lintels, angles, beams, etc., noted in details. I beams noted for support of 1 1/2" steel ceiling by Diabold.

Masonry: A. Use same concrete block and stone used and approved on the original building. B. Joint work in concrete block where insulation required to be plain cut flush joints to provide smooth even surface for application of insulation. All other joints concrete rodged joints similar to existing exposed block work. C. Finish: Back plaster all stone walls with Portland cement plaster to provide proper surface for insulation to be applied. Back plaster shall be Portland cement plaster mixed as follows (by volume): 1 part Portland cement plaster, 3 parts clean sharp sand (no coarse than 1/2" of Portland cement may be replaced by hydrated lime). Walls shall be wetted down evenly with clean water, then the plaster applied in two coats to a minimum thickness of 3/4" at the high points.

Finisher: See finish schedule sheet V-4 for surfaces to be painted.

Plaster: 1 coat primer
1 coat finish Alkyd Flat
Wood: 1 coat primer
1 coat finish Alkyd Satin finish
Metal: 1 coat primer
2 coats Alkyd Satin finish

Concrete and Concrete Block: 1 coat black filler primer
Concrete Block: 1 coat Alkyd Satin finish

Natural Finish Wood: 2 coats Pratt & Lambert D.O.Y. finish oil finish

Vinyl substrate tile finish: 1/8" Armstrong Excelon series. Color as selected by Architect. Base, Cove where used with tile and straight 4" where carpet is used.

All work and quantity Cabinet Work: A. Provide necessary wood blocking etc. noted on drawings. Use structural grade fir framing at locations noted on the drawings. B. Wood door frames and trim at Doors D6, D7, D8 White pine S4S with milled or routed areas, stops, etc. C. Wood door frame and trim at counter (see details sheet V3) to be S4S black walnut in size and shape noted on the details. D. Express booths 1 thru 3 and 8 thru 10, counter surfaces, work surfaces, shelves in booths 1, 5, 6 as per details noted on the drawings. Provide all necessary blocking, field measure all conditions prior to starting construction. Formica required on vertical surfaces 1/32", all horizontal surfaces 1/16". E. Natural finish wood doors - D1, D9, plain aligned walnut (select from stock doors). All other wood doors, D4, D6, D7, D8, D10 to be paint grade birch.

Sign panel at front entrance: 3/4" plywood natural finish walnut front, back, side and ends. Hardware style "M", cylinder lock keyed to building system. Finish: If available from stock; Ferranodic bronze to match main entrance doors of existing building.

Minimum Entrance Door and Frames: Kameer Harrow Sells "190" 1-3/4" x 4-1/2" frames with concealed overhead closer. Hardware style "M", cylinder lock keyed to building system. Finish: If available from stock; Ferranodic bronze to match main entrance doors of existing building.

Glass: 1/4" thick wire glass - Mississippi polished Trelis. If polished Trelis not readily available use 1/4" polished Misco.

Vault Door: Class 10 vault door, 4 hour fire door D3. Steel vault liner, and storage cabinets (prior pricing covers these items).

Building standard per schedule noted on Dog. V-2.

18 Ga. stock units, prime painted from best source.

Pittsburgh Corning Fomglass block 1-1/2" thick applied to vertical surfaces. Use Pittsburgh Corning Asphalt Emulsion as an adhesive using 1 gallon per 50 sq. ft. Coat edge with Emulsion prior to placing in shell applied to wall.

Flintkote cold - applied asphalt compound. Apply water proofing on floors and walls as noted on the drawings using the following method:

A. Primer: using brush or spray, masonry, concrete must be clean, smooth and dry, free of rough projections and surface voids. Scrub primer thoroughly into surface. Apply Flintkote asphalt primer #269 at rate of 1/5 to 1/2 gallon per 100 sq. ft., depending on porosity.

B. Coating: trowel apply Flintkote Trowel Mastic 6-8 gal. per 100 sq. ft. of surface area.

C. Yellow Jacket Glass fabric: applied horizontally, embedded into coating, lapped at least 2". Reinforce corners and edges.

D. Finished membrane should consist of the following:

1. Primer
2. 1/8" thick Flintkote Trowel Mastic; 6-8 gal. per 100 sq. ft.
3. Yellow Jacket Glass Fabric,
4. Flintkote Trowel Mastic; 4 gal. per 100 sq. ft.

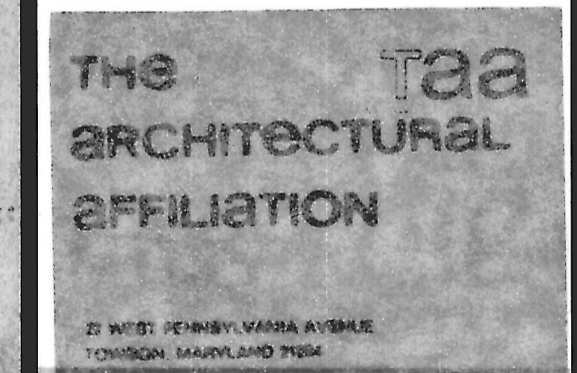
Protection of horizontal membrane surfaces prior to placement of concrete topping. Provide suitable base sheet of sishtkraft paper or felt to protect the new membrane.

Carpet: Allow \$750.00 for 60 sq. yds. of carpet and underlayment.

REVISIONS

NO.	DATE	ITEM	REF.
1	7/24/68	PL. BLV. CHANGED TO ACCORDING TO 3/4" CARPET	
2	7/24/68	TRAVELER DOOR - 3 CARPET	
3	7/24/68	CARPET STAIR SPEC. DETAILS	
4	7/22/68	DIMENSION CHANGE	

FIRM	SEAL
DESIGNED BY	
DRAWN BY	
CHECKED BY	
APPROVED BY	



OFFICE BUILDING FOR NOTTINGHAM FARMS INC. 102 W. PENNSYLVANIA AVE. TOWSON, MARYLAND 21204

SECTIONS AND DETAILS

JOB NO.	6522 P-16
SCALE	AS NOTED
DATE	7/24/68
LAST REV.	JULY 22, 1968

V3