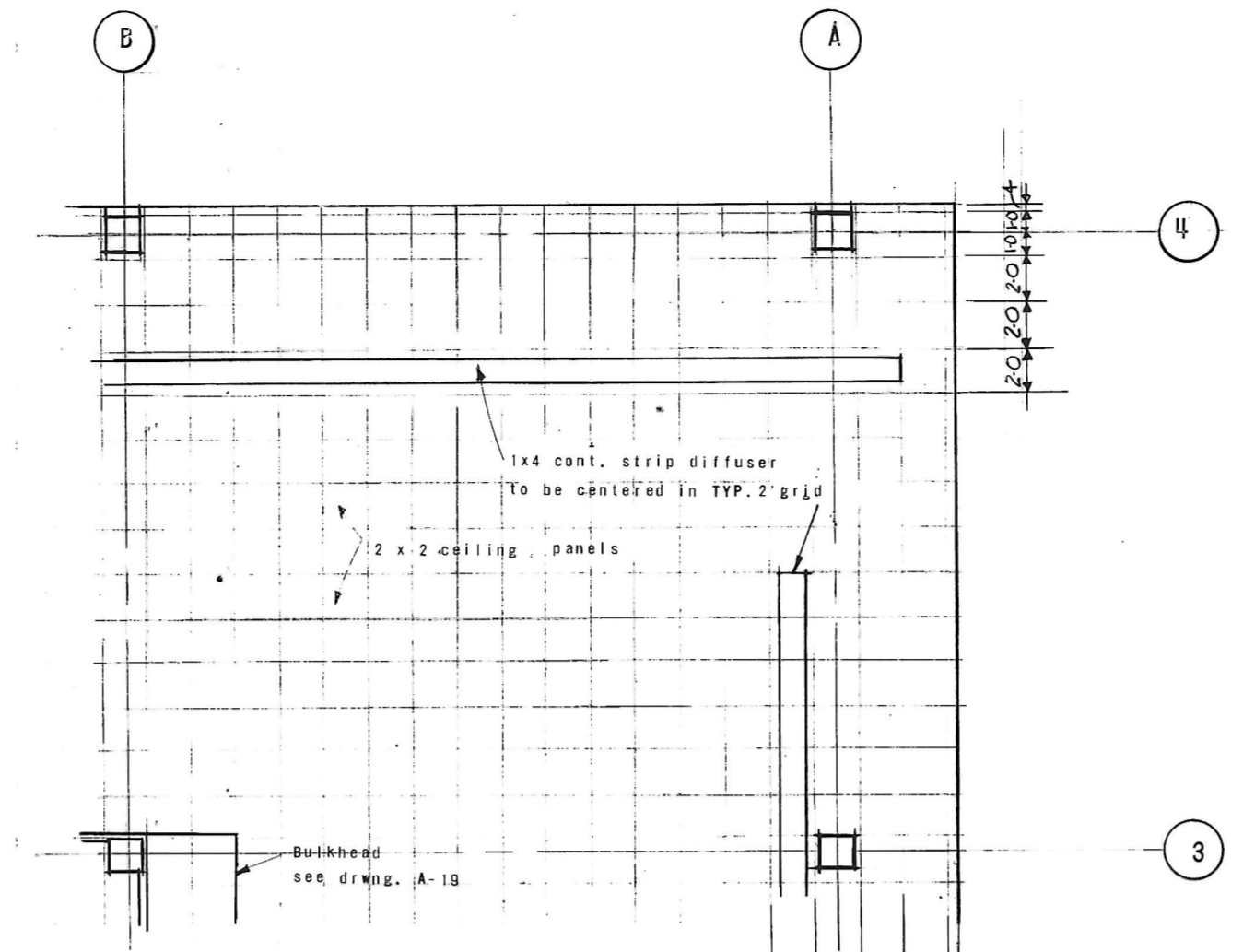


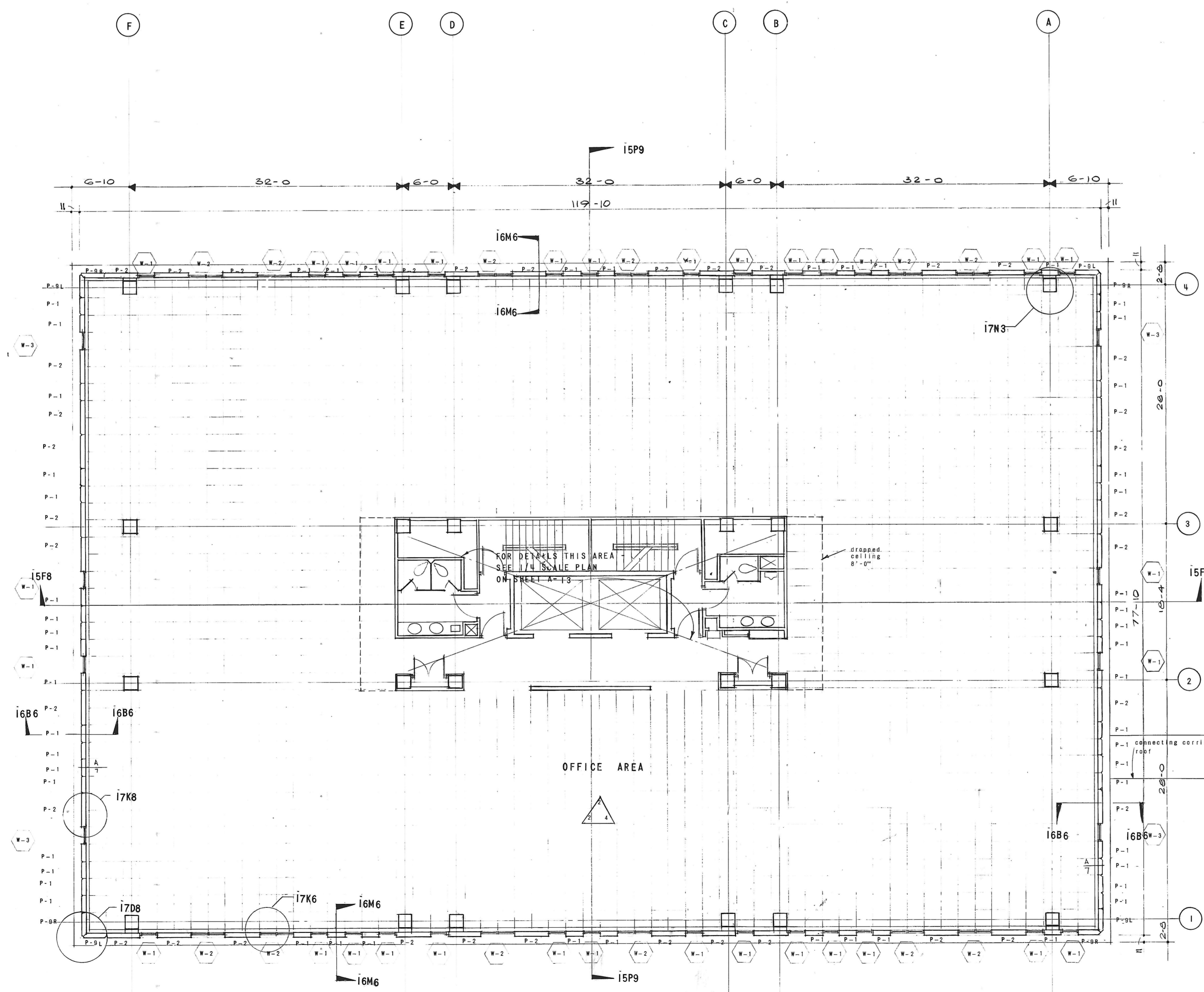
TYP. REFLECTED CEILING PLAN 6F3  
1ST & 6TH FLOORS

1/8" = 1'-0"



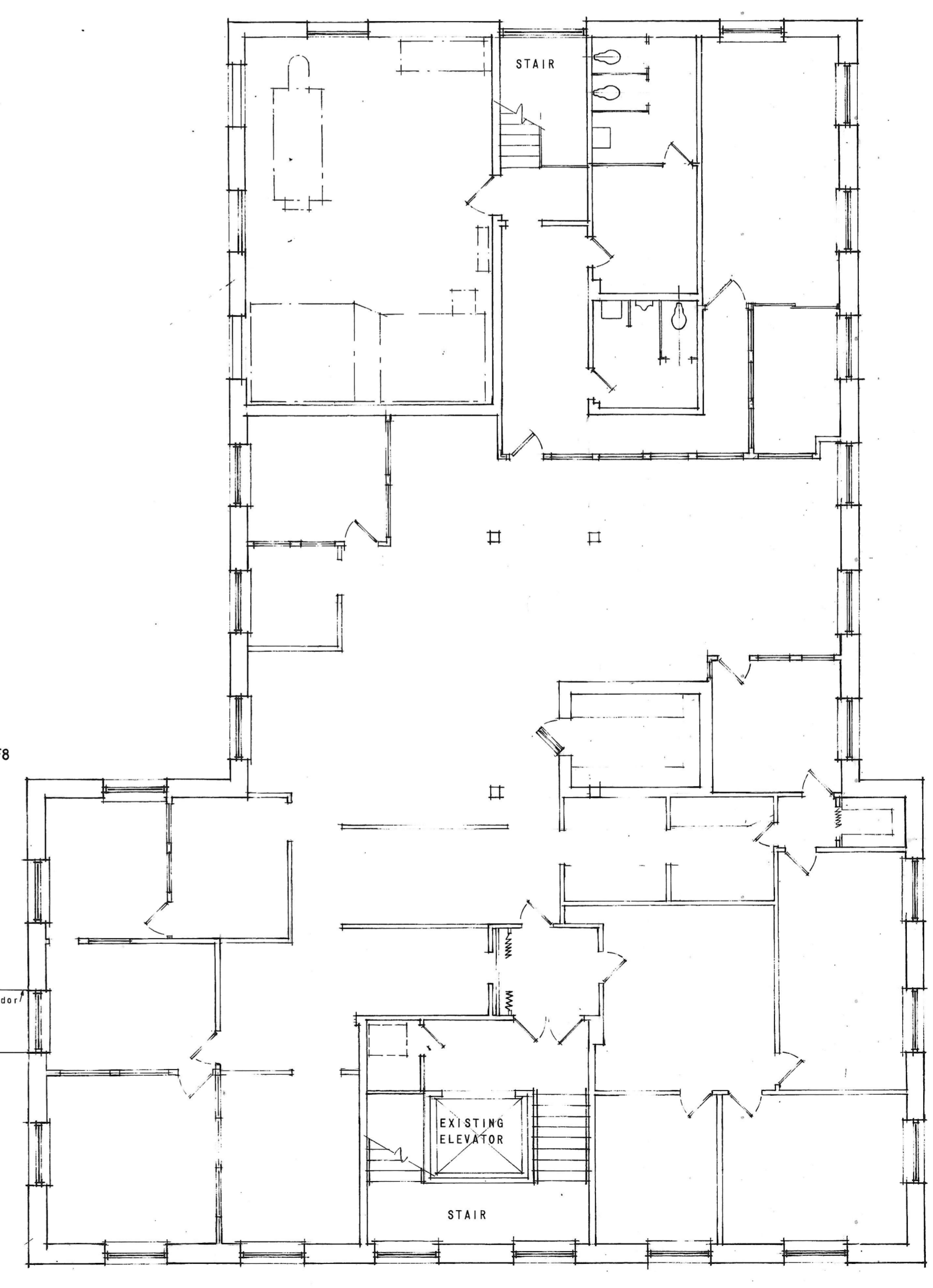
TYP. REFLECTED CEILING PLAN 6K3  
2ND, 3RD, 4TH, & 5TH FLOORS

1/8" = 1'-0"



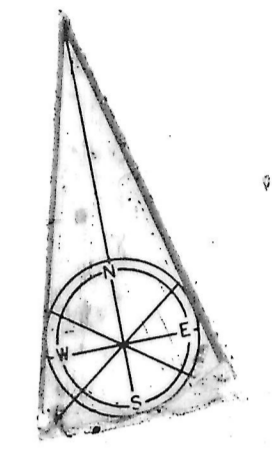
THIRD FLOOR PLAN

SCALE 1/8" = 1'-0"



EXISTING THIRD FLOOR PLAN (CAMPBELL BUILDING)

SCALE 1/8" = 1'-0"



REVISIONS

NO.	DATE	ITEM	REF.
1	DEC 66	CEILING PLAN	6F3
2	13 DEC 66	CONCRETE PANELS	

FIRM SEAL  
 DESIGNED BY  
 DRAWN BY  
 CHECKED BY  
 APPROVED BY

STATE OF MARYLAND  
 BOARD OF EXAMINERS AND REGISTRATION OF ARCHITECTS

STRUCTURAL ENGINEERING  
 VAN RENSSELAER P. SAXE  
 1701 ST. PAUL ST. BALTO, MD. 21202

MECHANICAL-ELECTRICAL ENGINEERING  
 HENRY ADAMS, INC.  
 2315 ST. PAUL ST. BALTO, MD. 21218

CHRISTIE,  
 NILES &  
 ANDREWS  
 ARCHITECTS

22 A. Pennsylvania Ave.  
 Towson, Maryland 21204  
 1647 31st Street, N.W.  
 Washington, D.C. 20007

OFFICE BUILDING  
 FOR  
 NOTTINGHAM  
 FARMS INC.

102 W. PENNSYLVANIA AVE.  
 TOWSON, MARYLAND 21204

THIRD FLOOR PLAN  
 (NEW & EXISTING)

JOB NO.	6522
SCALE	AS NOTED
DATE	27 Sept. 66
LAST REV.	13 DEC 66

A6