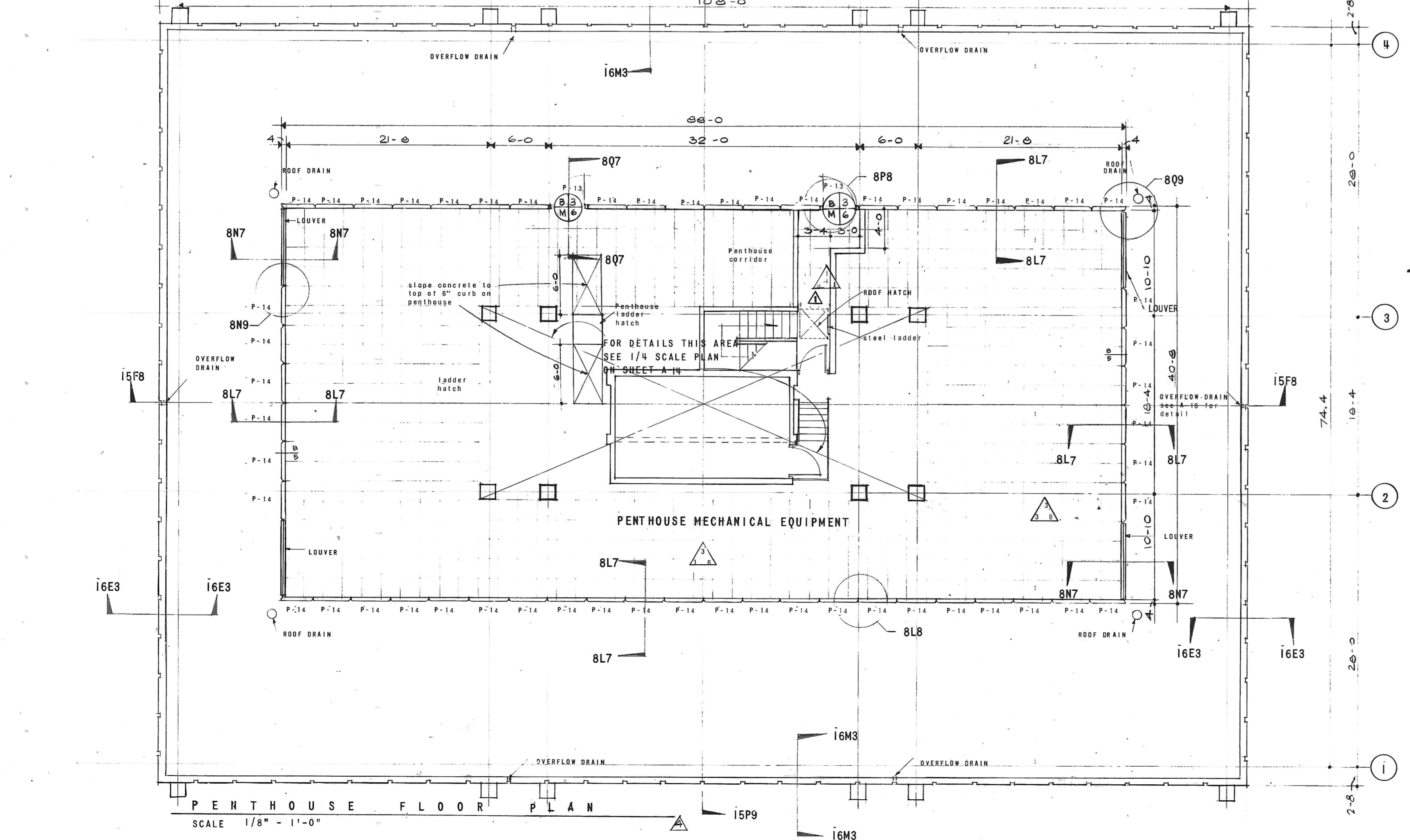


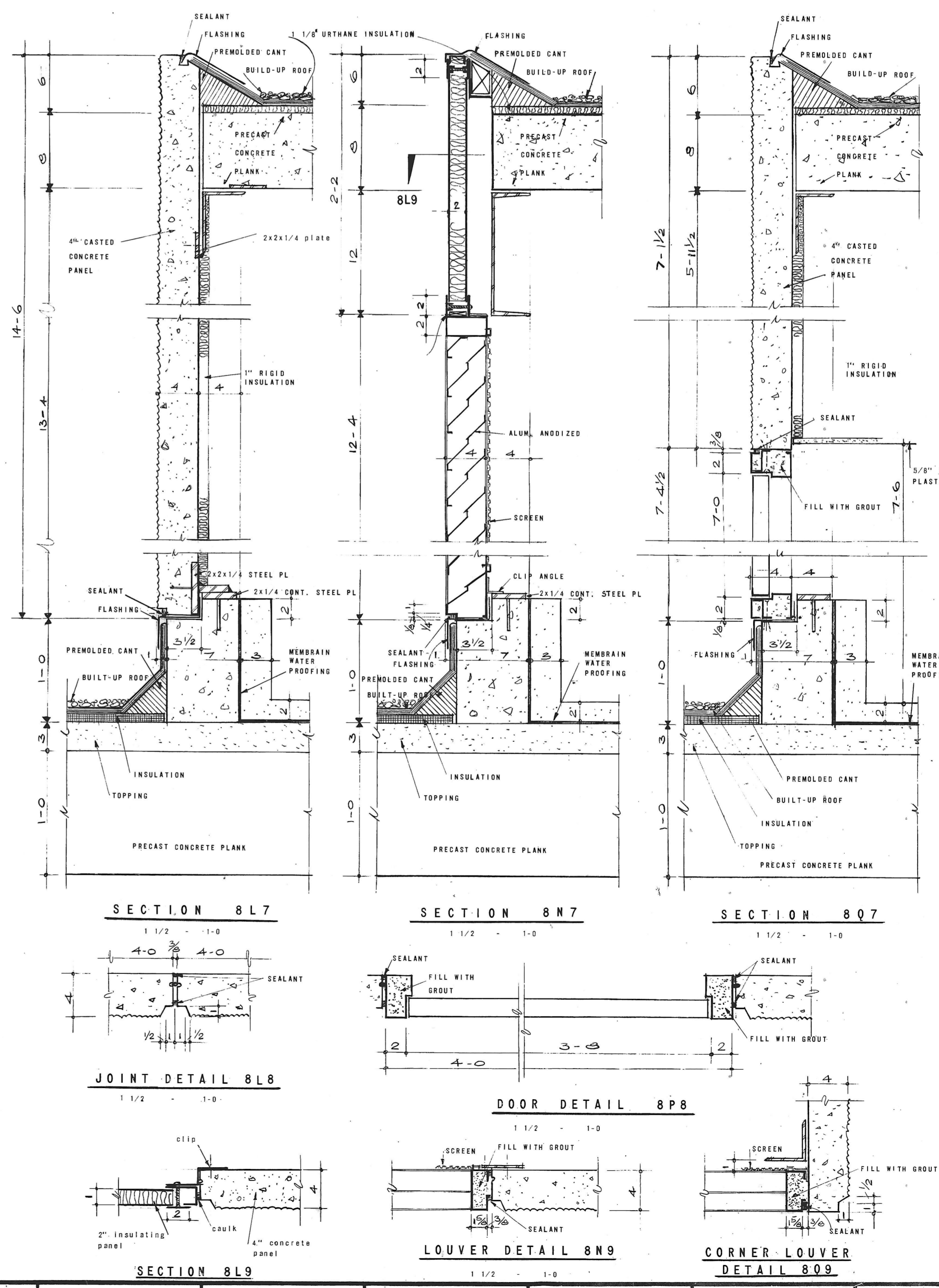
SIXTH FLOOR PLAN

SCALE 1/8" = 1'-0"

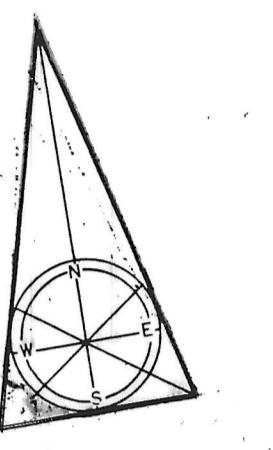


PENTHOUSE FLOOR PLAN

SCALE 1/8" = 1'-0"



REVISIONS			
NO. DATE	ITEM	REF.	
1	10.19.66	Stair #2 - door	FF6
2	OCT.19.66	PANEL	D5
3	13 DEC.66	CONCRETE PANELS	
4	16 JAN.67	PENTHOUSE CORRIDOR FINISH	8F7



FIRM: CNA  
 DESIGNED BY: PGC  
 DRAWN BY: SH  
 CHECKED BY: JJK  
 APPROVED BY: PGC

STATE OF MARYLAND BOARD OF EXAMINERS AND REGISTRATION OF ARCHITECTS  
 680-A  
 1392-A 1157-A

STRUCTURAL ENGINEERING  
 VAN RENSSLAER P. SAXE  
 1701 ST. PAUL ST., BALTO., MD. 21202

MECHANICAL-ELECTRICAL ENGINEERING  
 HENRY ADAMS, INC.  
 2315 ST. PAUL ST., BALTO., MD. 21218

**CHRISTIE, NILES & ANDREWS**  
 ARCHITECTS  
 22 W. PINEY VILLAGE RD.  
 GAITHERSBURG, MARYLAND 20878  
 107 31st Street, N.W.  
 WASHINGTON, D.C. 20007

**OFFICE BUILDING**  
 FOR  
**NOTTINGHAM FARMS INC.**

102 W. PENNSYLVANIA AVE.  
 TOWSON, MARYLAND 21204

SIXTH FLOOR PLAN  
 PENTHOUSE FLOOR PLAN

JOB NO. 6522  
 SCALE AS NOTED  
 DATE 27 Sept. 66  
 LAST REV. 16 JAN. 67

**A 8**