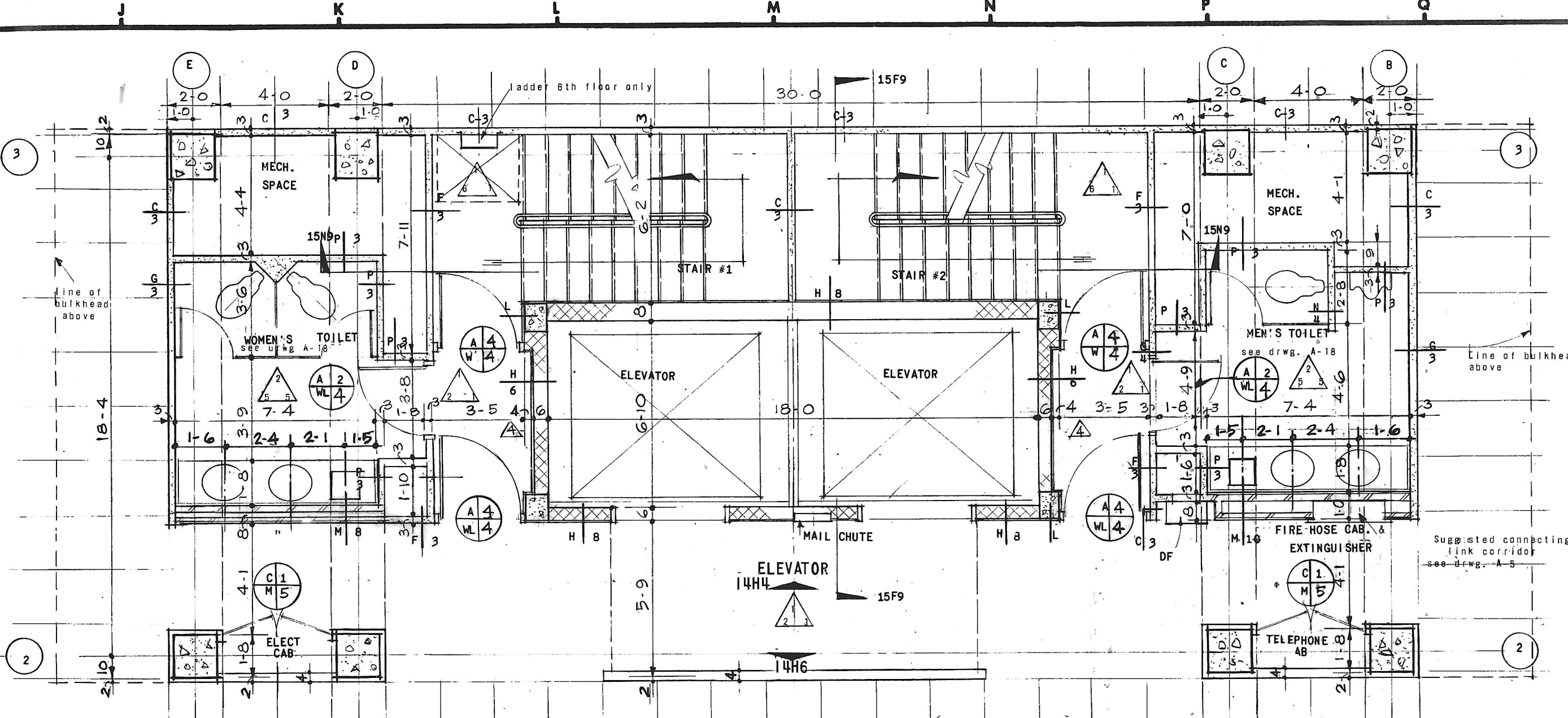
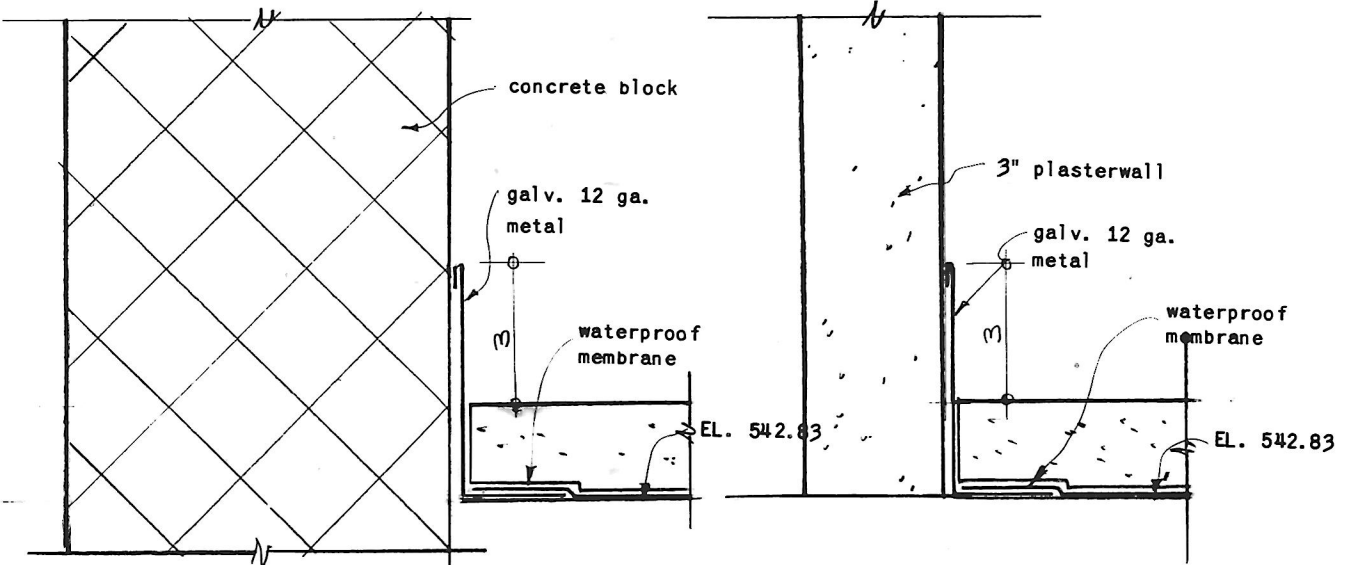


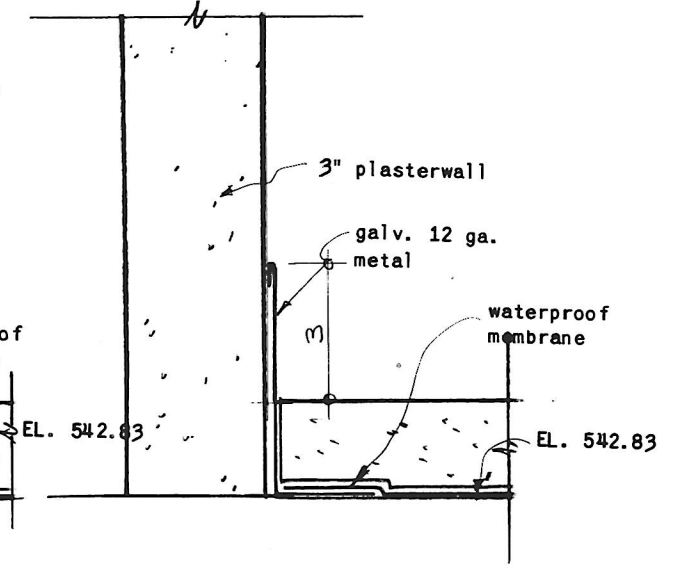
PENTHOUSE FLOOR PLAN 14F3
SEE A-8 FOR LOCATION
1/4" = 1'-0"



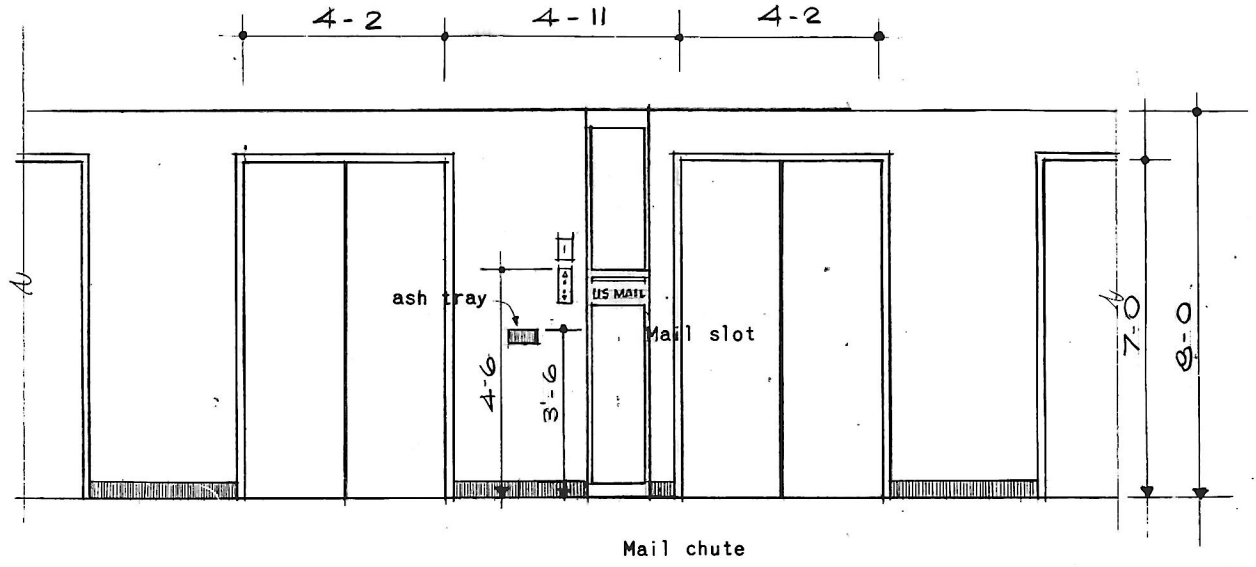
SECOND, THIRD, FOURTH, FIFTH, SIXTH FLOOR PLAN 14P3
SEE A-5 THRU A-8 FOR LOCATION
1/4" = 1'-0"



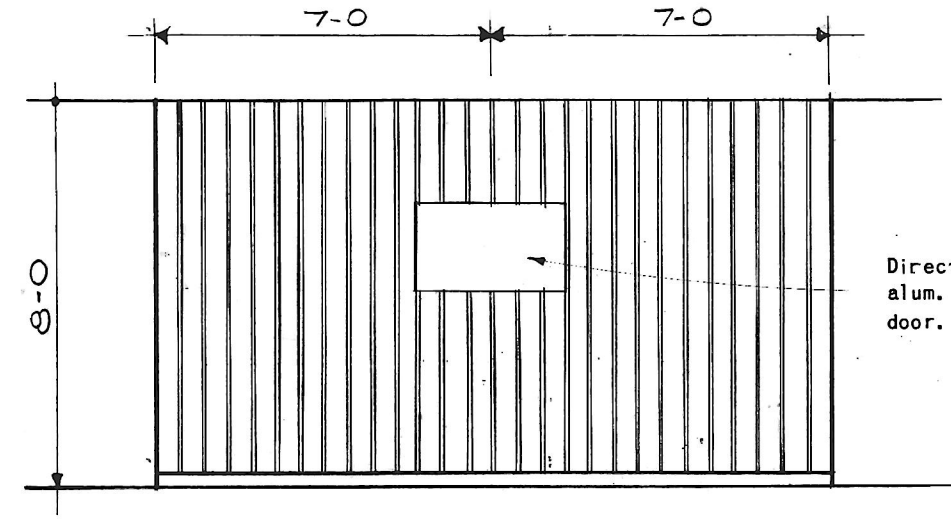
SECTION 14B5
scale 3" = 1'-0"



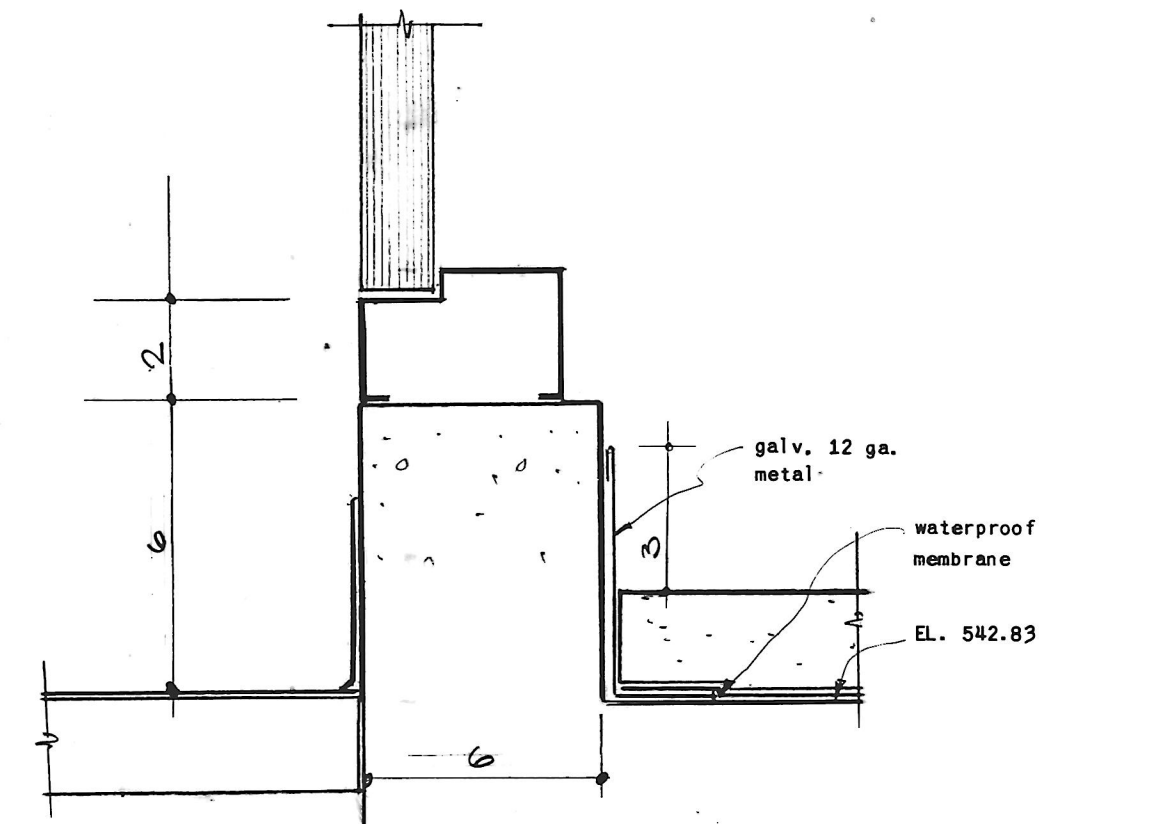
SECTION 14C5
scale 3" = 1'-0"



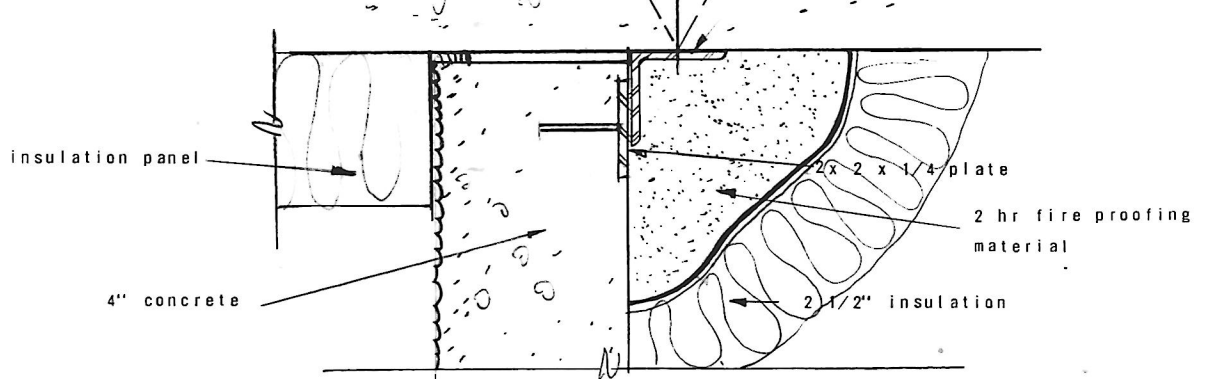
SECOND - SIXTH FLOOR ELEVATION 14H6



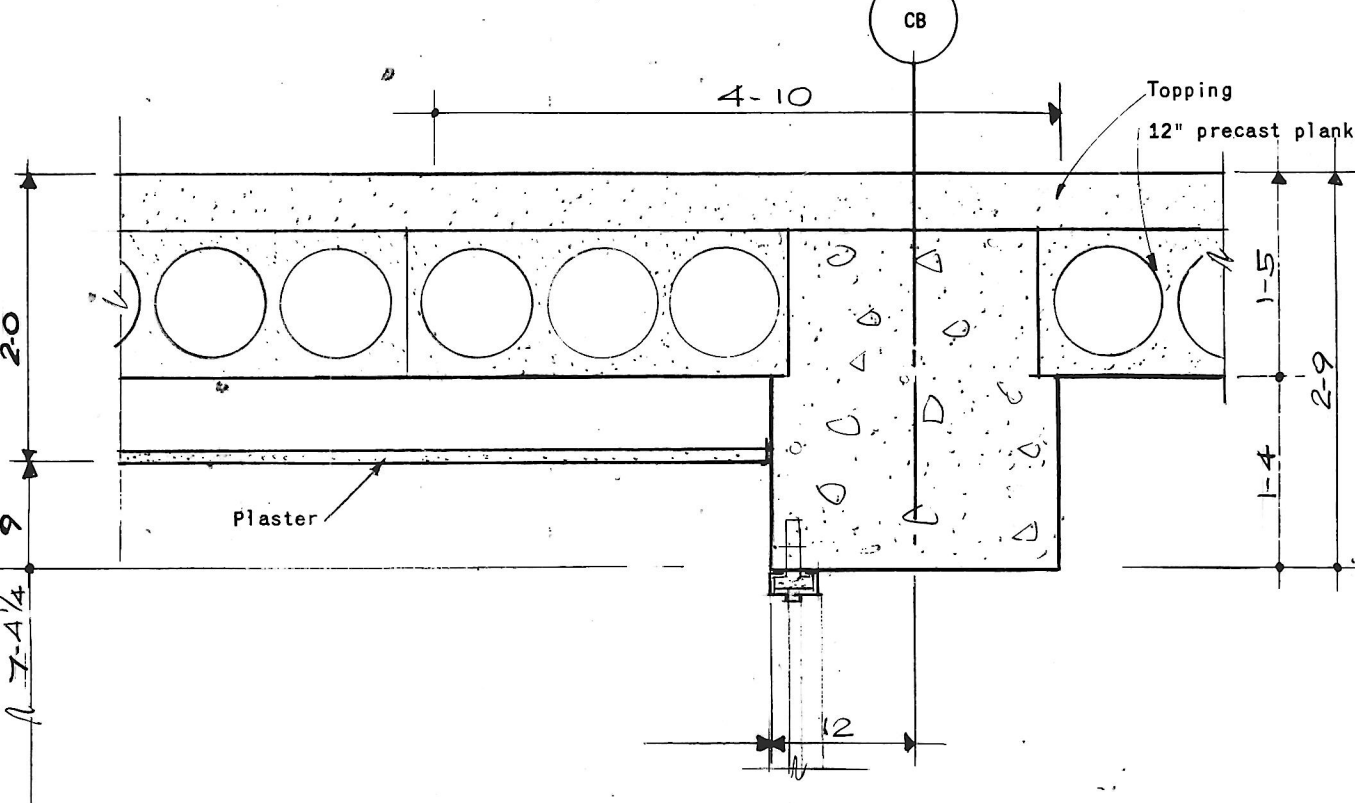
SECOND - SIXTH FLOOR ELEVATION 14H6



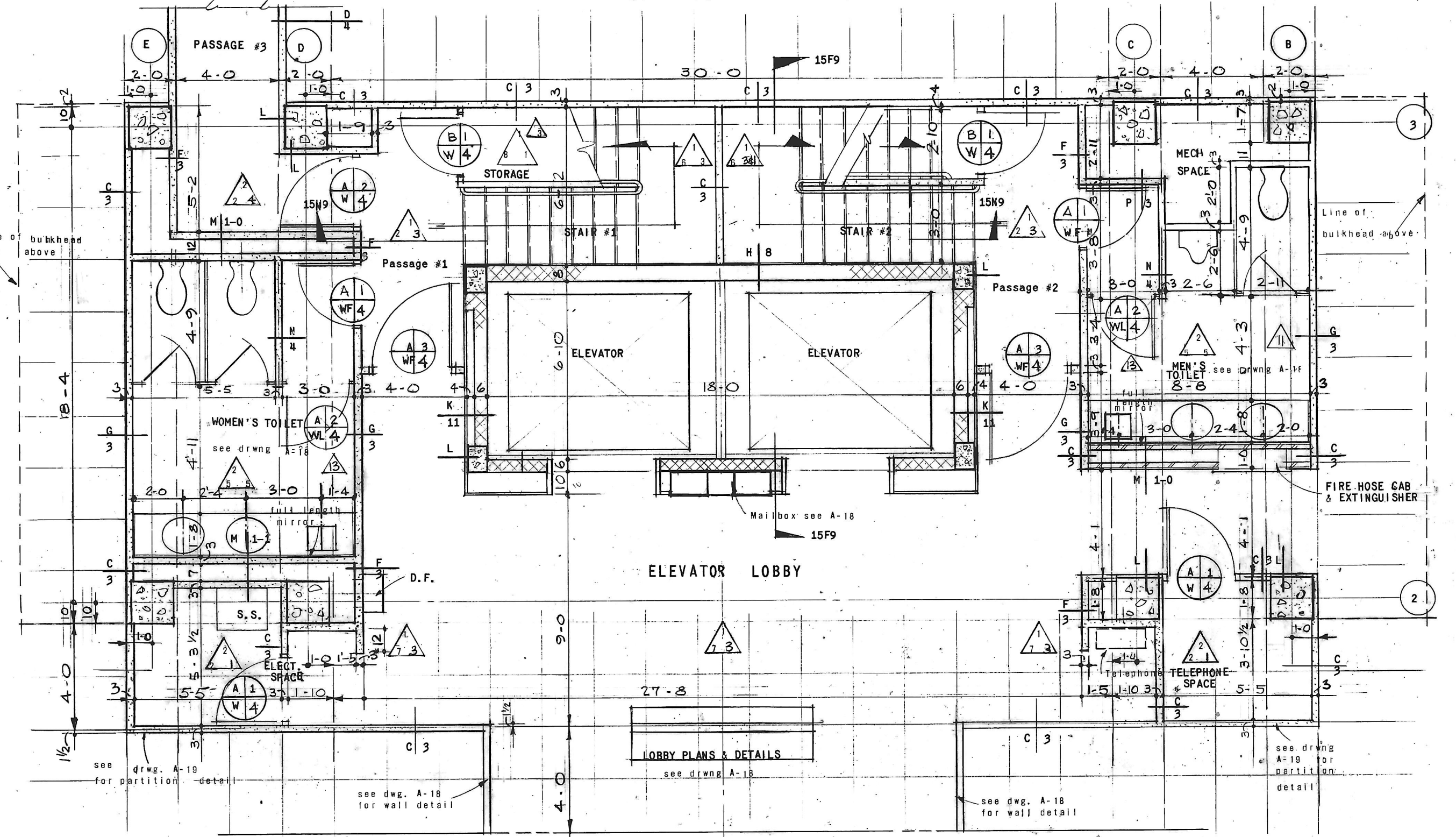
SECTION 14B6
scale 3" = 1'-0"



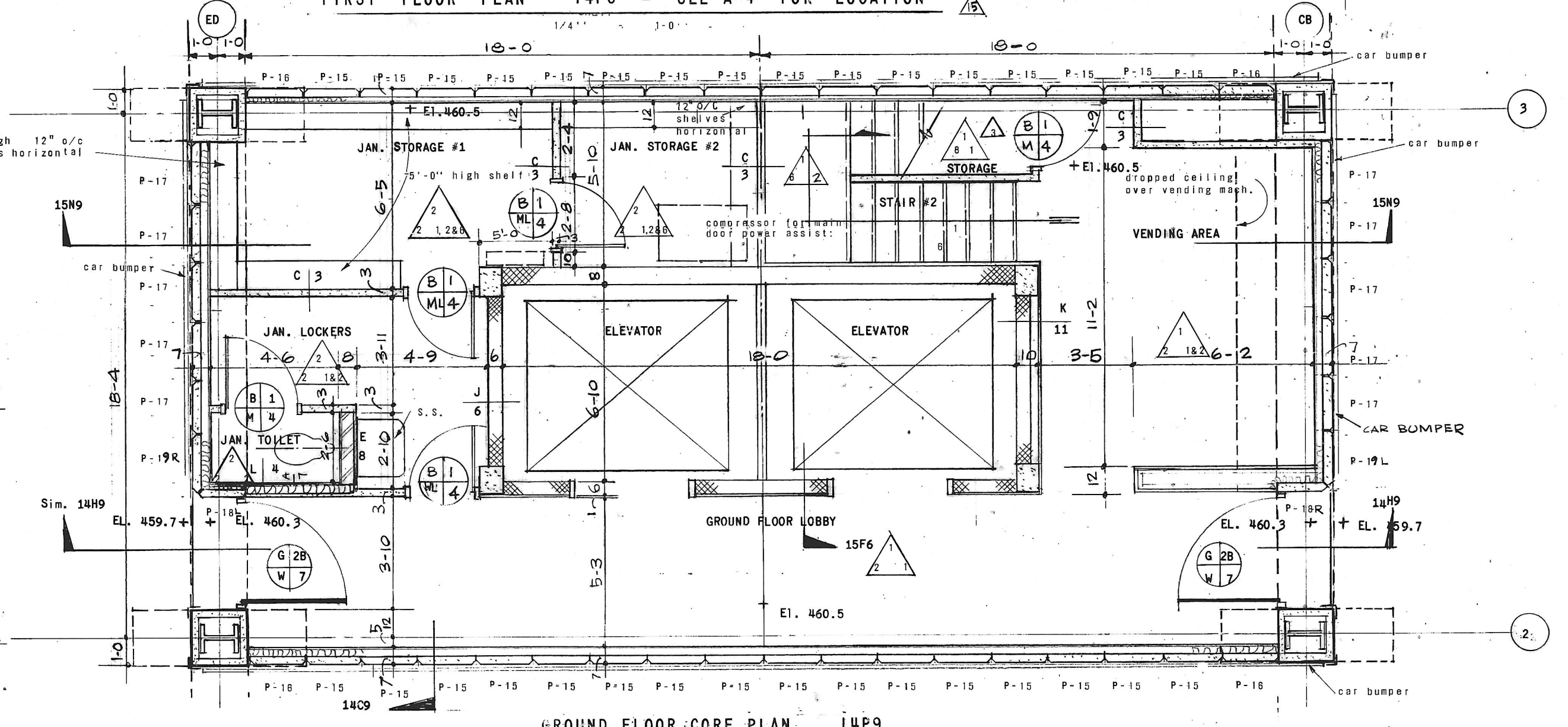
14C9
3" = 1'-0"



SECTION 14H9



FIRST FLOOR PLAN 14P6 - SEE A-4 FOR LOCATION
1/4" = 1'-0"



GROUND FLOOR CORE PLAN 14P9
SEE A-3 FOR LOCATION
1/4" = 1'-0"

REVISIONS			
NO.	DATE	ITEM	REF.
1	19 Oct 66	Col. Size + Details	14P3
2	19 Oct 66	Fire proofing	14C9
3	19 Oct 66	Finish schedule added	14P3
4	1 DEC 66	DIMENSIONS	14P3
5	13 DEC 66	CONCRETE PANELS	14P3
6	9 JAN 67	ASH TRAY	14H6
7	16 JAN 67	TELEPHONE FIRST FLOOR LBBY	14A4
8	16 JAN 67	PLASTER WALL	14F3
9	18 JAN 67	DOORS FIRST FLOOR	14P3
10	19 JAN 67	METAL EDGE	14B5
11	20 JAN 67	DIMENSIONS	14P3
12	2 FEB 67	DIMENSIONS	14P3
13	27 FEB 67	DOORS FIRST FLOOR	14P3
14	31 MAR 67	FINISH	14P3
15	5 JUNE 67	COUNTER DIMENSIONS	14P3

FIRM SEAL
DESIGNED BY
DRAWN BY
CHECKED BY
APPROVED BY
STATE OF MARYLAND

STRUCTURAL ENGINEERING
VAN RENSSLAER P. SAXE
1701 ST. PAUL ST. BALTO, MD, 21202

MECHANICAL-ELECTRICAL ENGINEERING
HENRY ADAMS, INC.
2315 ST. PAUL ST. BALTO, MD, 21218

CHRISTIE, NILES & ANDREWS ARCHITECTS
22 N. Pennsylvania Ave
Towson, Maryland 21204
101 823-8610
202 472-4027

OFFICE BUILDING
FOR
NOTTINGHAM FARMS INC.

102 W. PENNSYLVANIA AVE.
TOWSON, MARYLAND 21204

CORE PLANS & ELEVATIONS

JOB NO.	6522
SCALE	AS NOTED
DATE	27 Sept. 66
LAST REV.	15 JUNE 67

A14