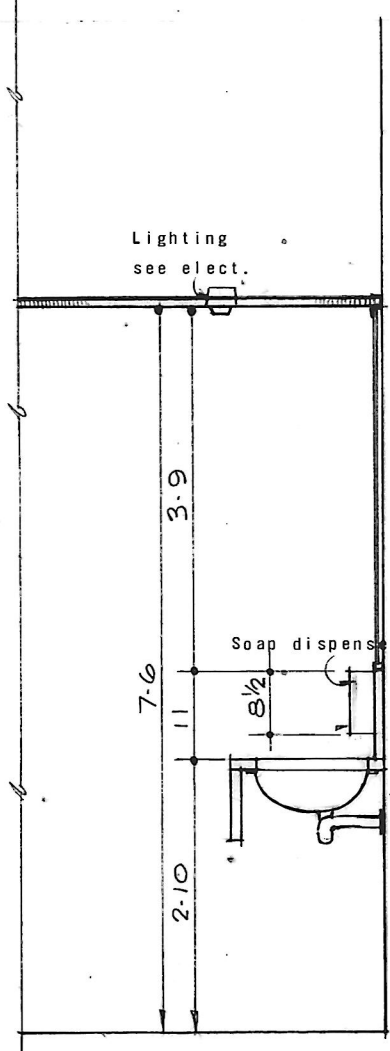
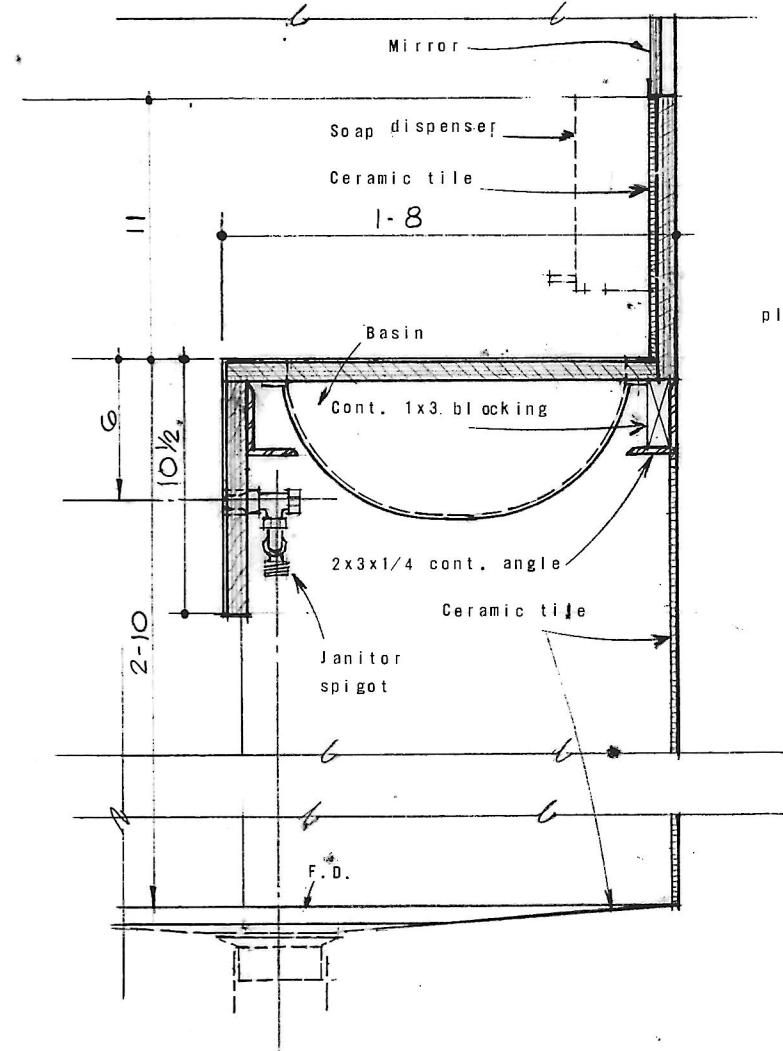


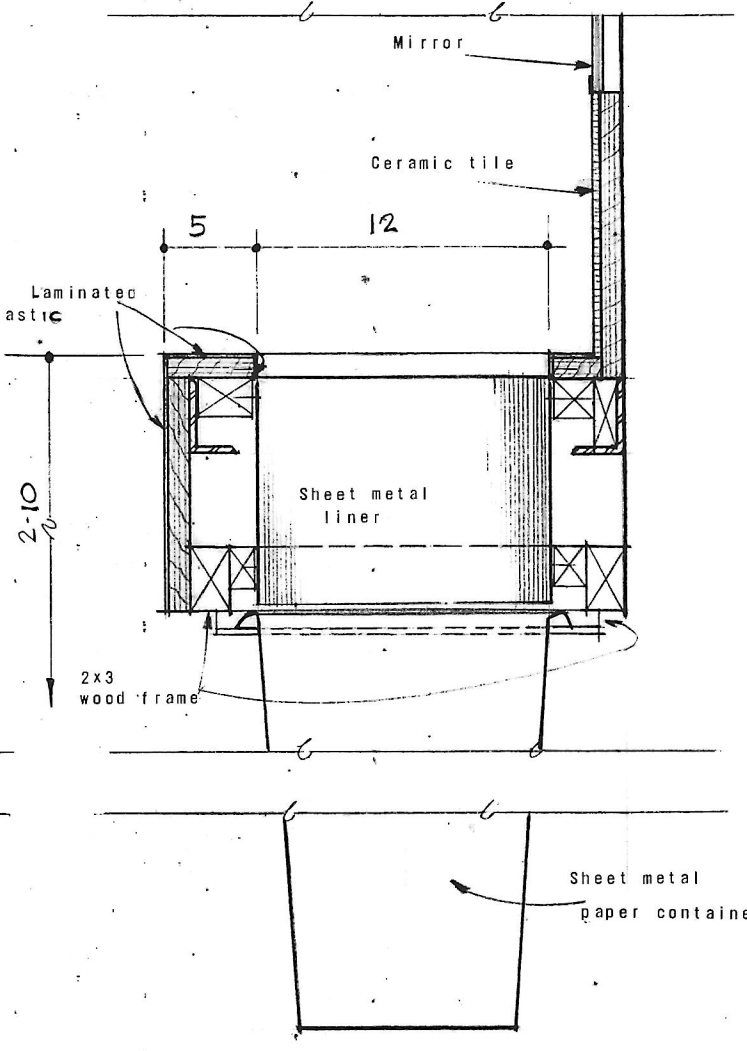
18D3 TYP. TOILET ROOM ELEV. 18C3



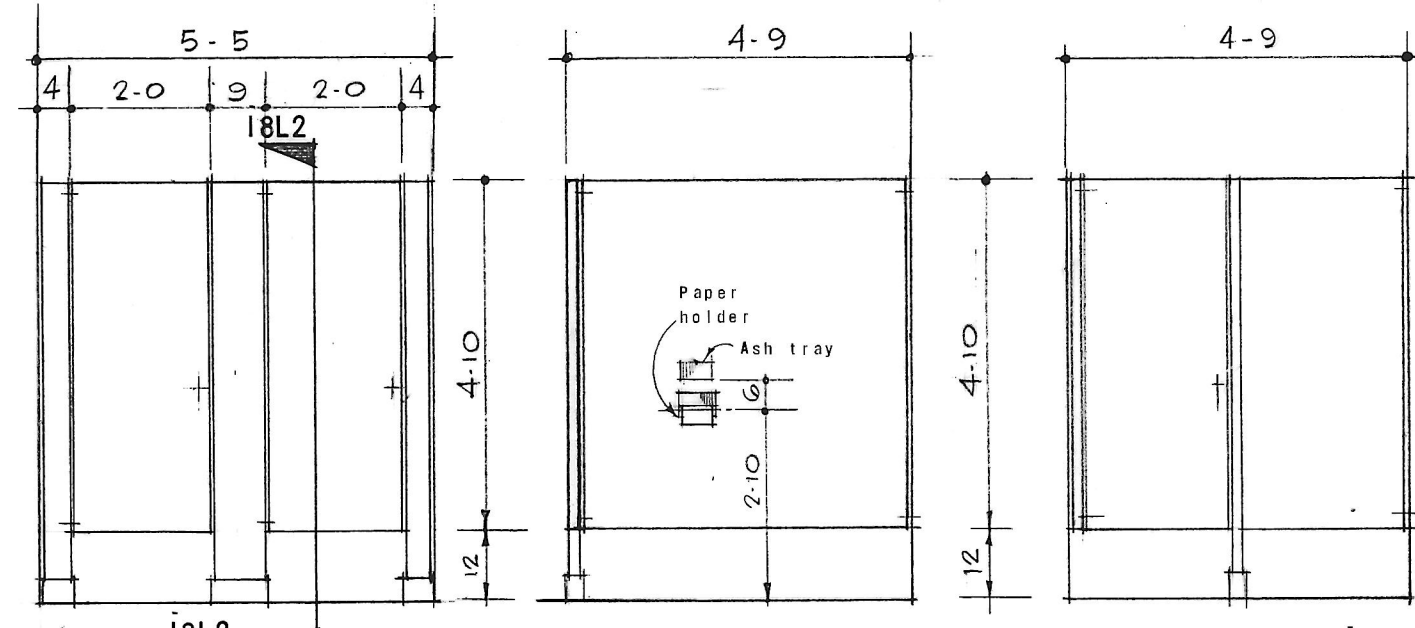
SECTION - COUNTER 18D3



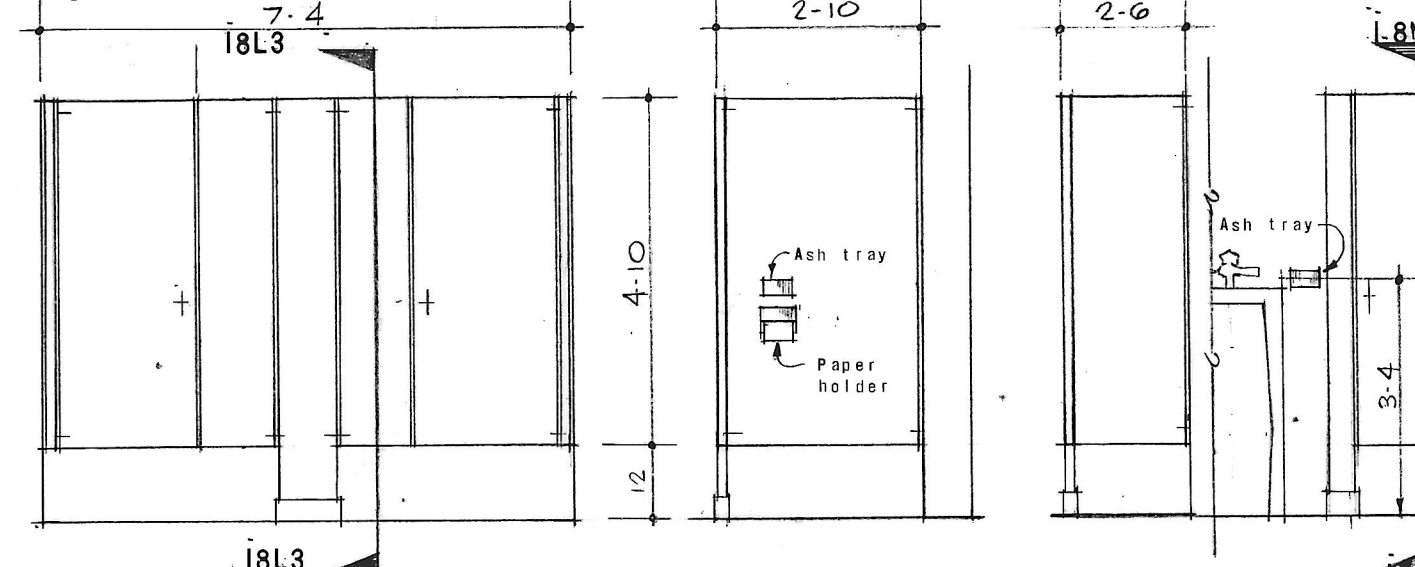
SECTION BUILT IN LAVATORY 18G3



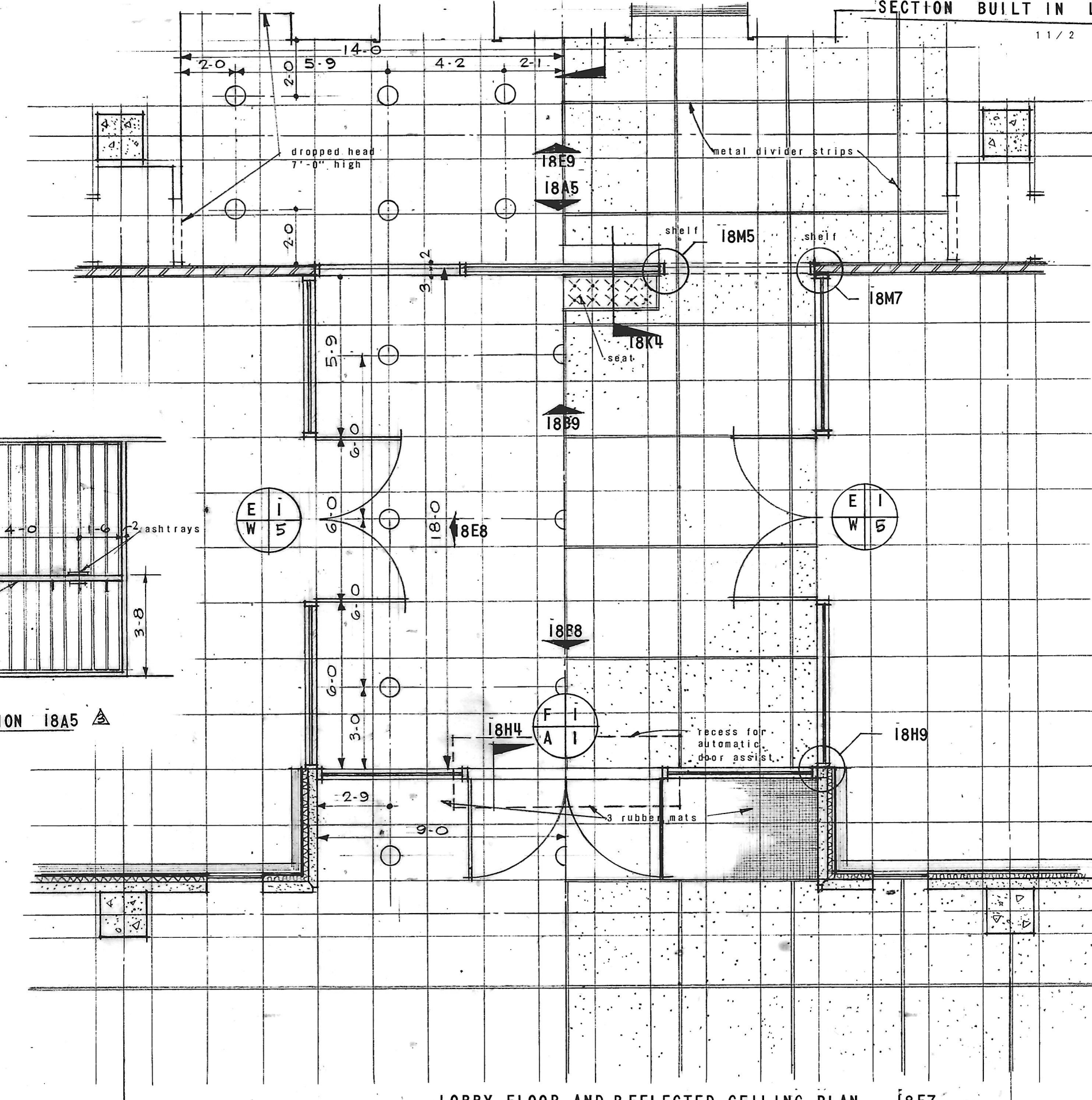
SECTION BUILT IN PAPER 18H3



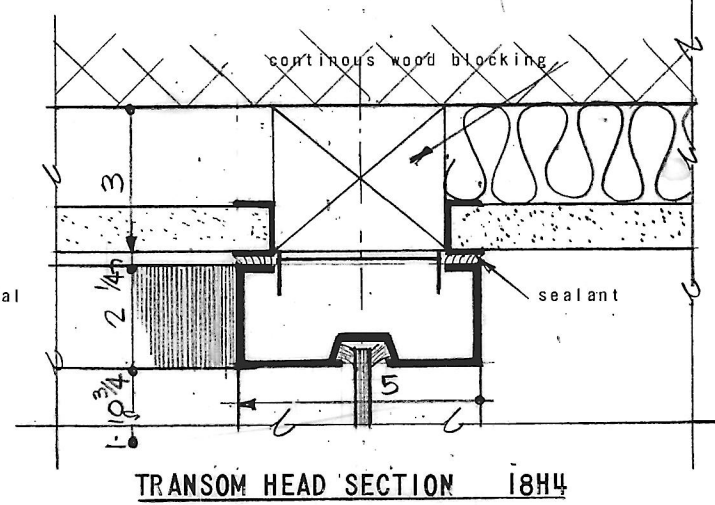
18L2 ELEVATION 18K2 SECTION 18L2 ELEVATION 18N2



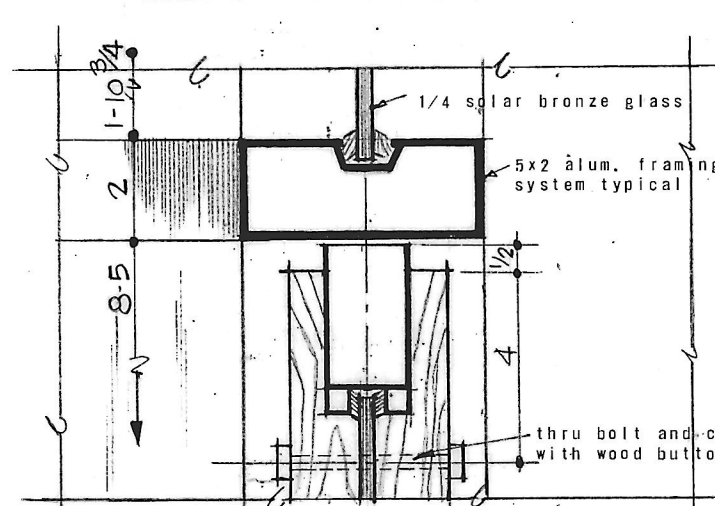
18L3 ELEVATION 18K3 SECTION 18L3 SECT. 18M3 ELEVATION 18N3



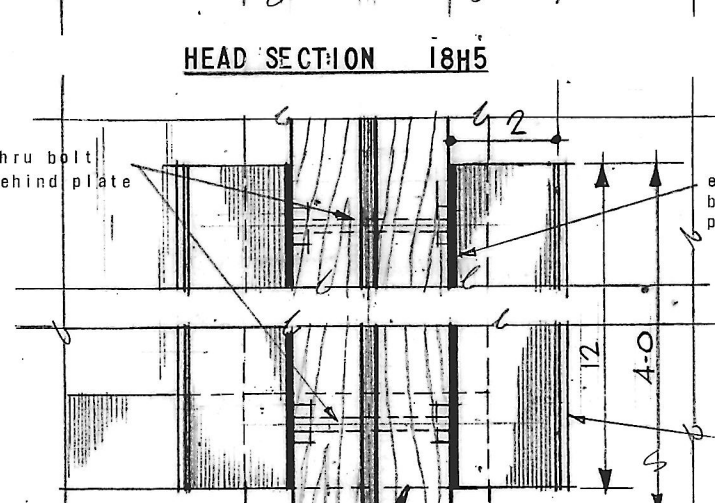
LOBBY FLOOR AND REFLECTED CEILING PLAN 18E7



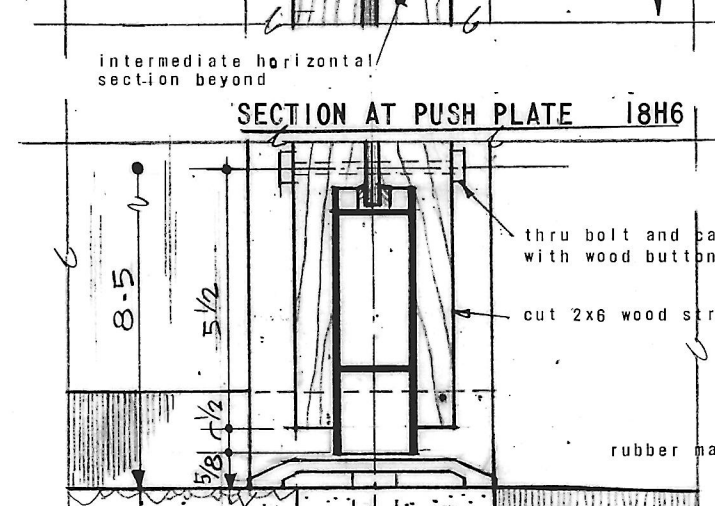
TRANSOM HEAD SECTION 18H4



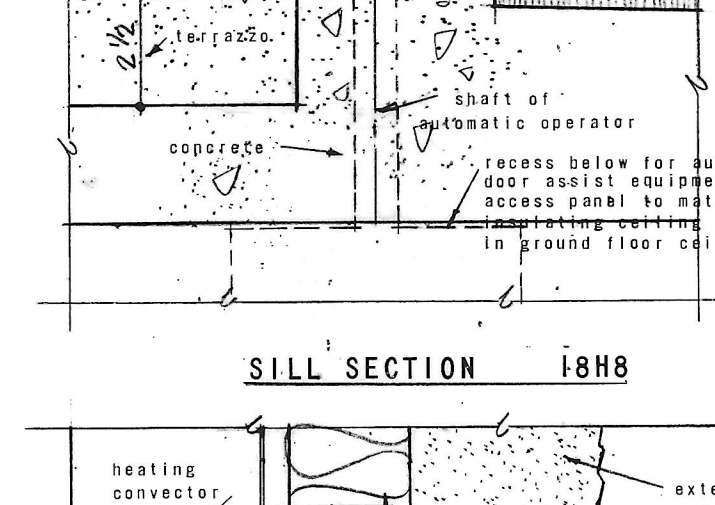
HEAD SECTION 18H5



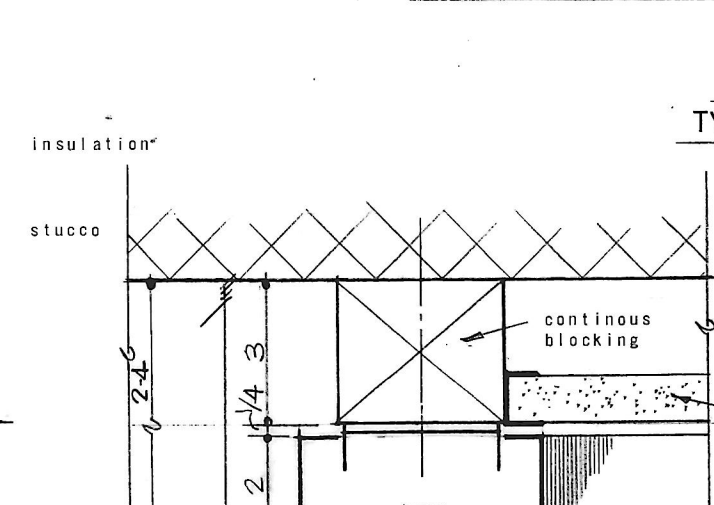
HEAD SECTION 18H6



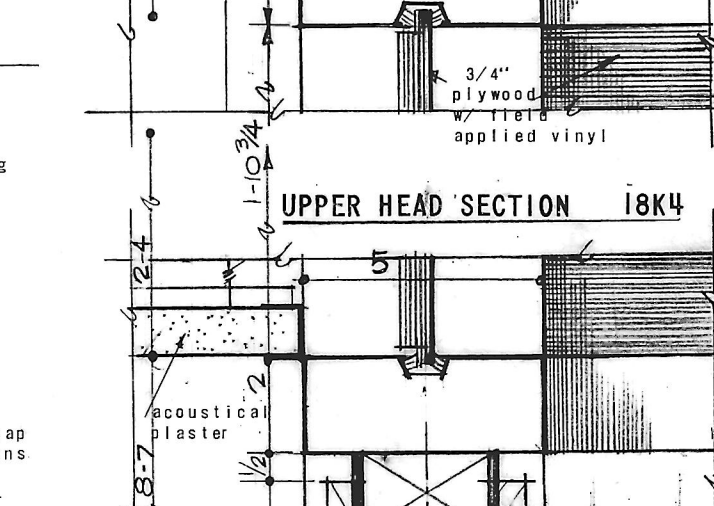
SECTION AT PUSH PLATE 18H6



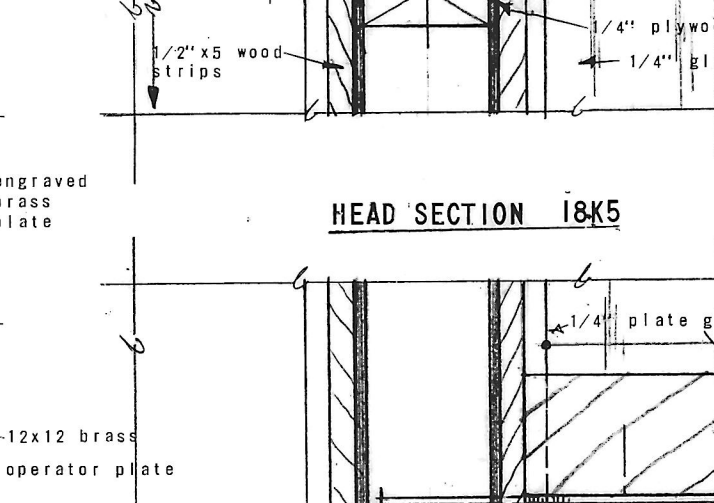
SILL SECTION 18H8



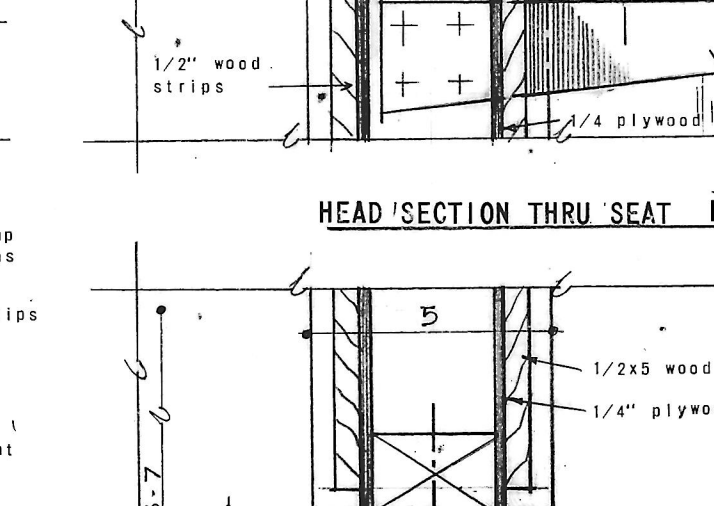
UPPER HEAD SECTION 18K4



HEAD SECTION 18K5

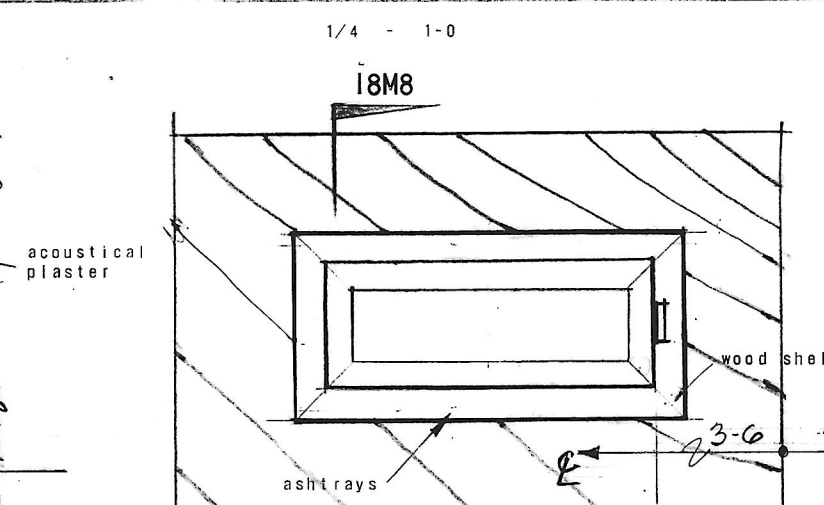


HEAD SECTION THRU SEAT 18K6

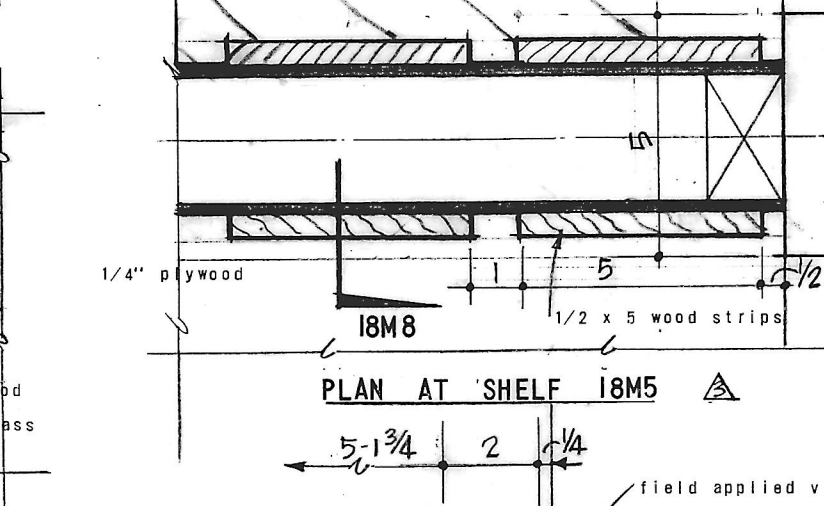


SILL SECTION 18K7

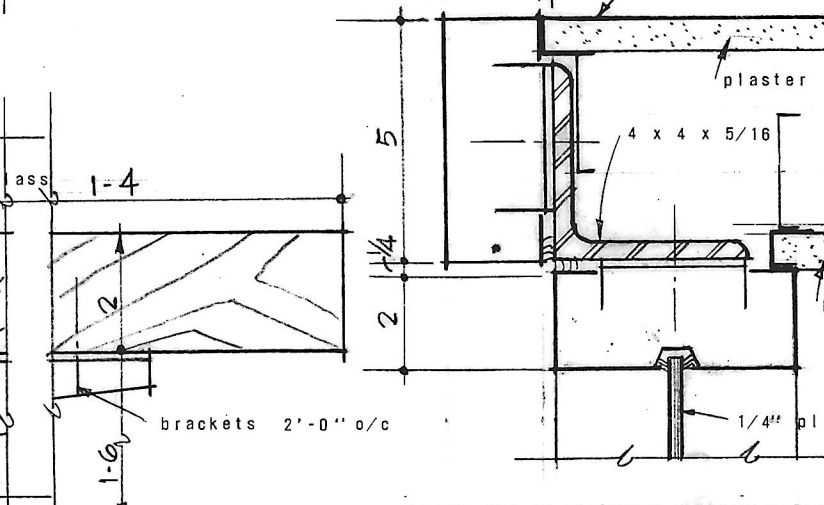
TYPICAL ELEVATION METAL TOILET PARTITION 1/4 - 1-0



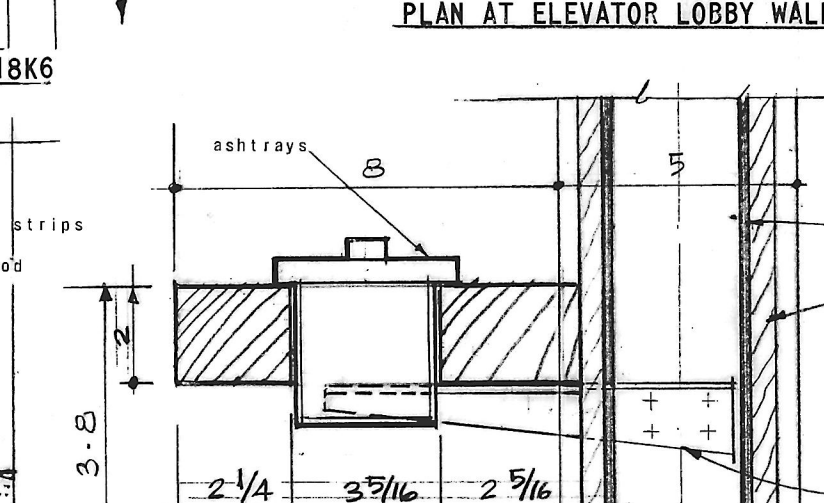
PLAN AT SHELF 18M5



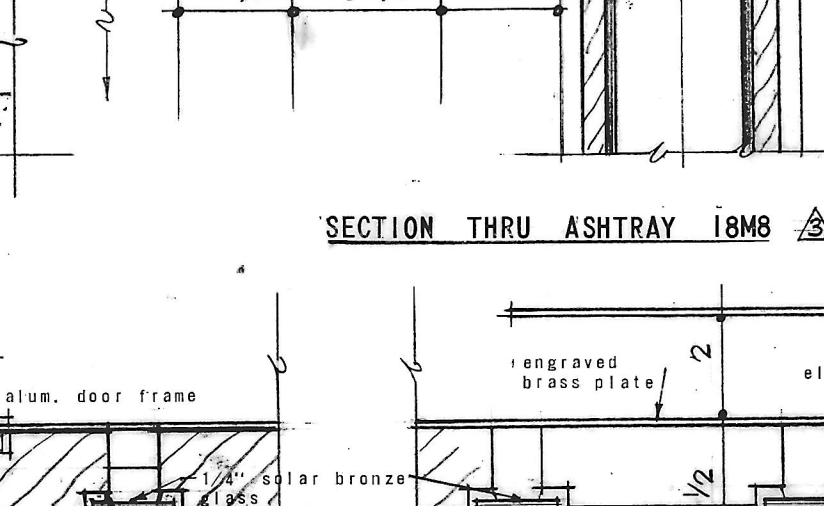
PLAN AT ELEVATOR LOBBY WALL 18M7



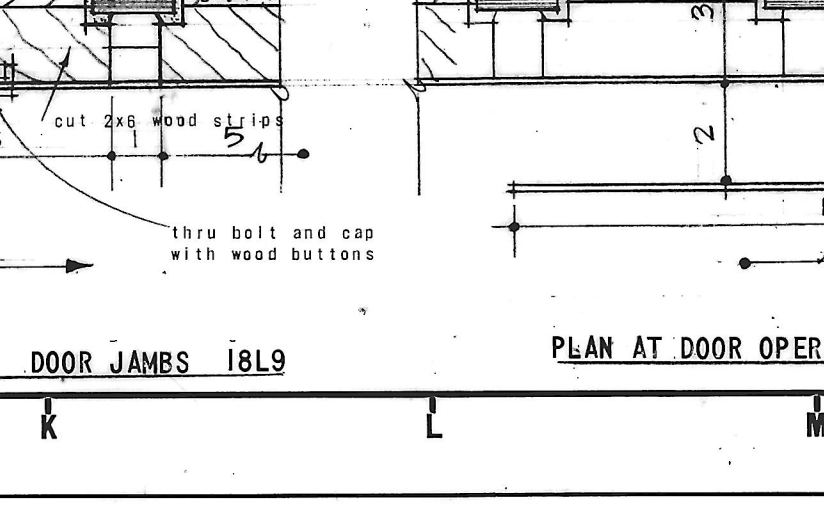
SECTION THRU ASHTRAY 18M8



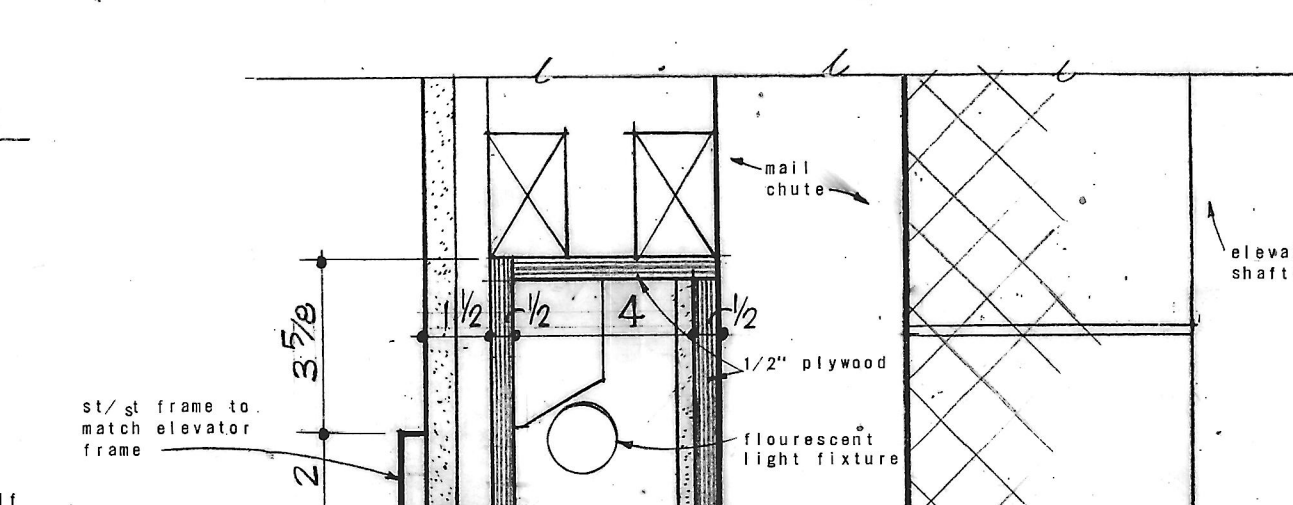
PLAN AT EXTERIOR LOBBY WALL 18H9



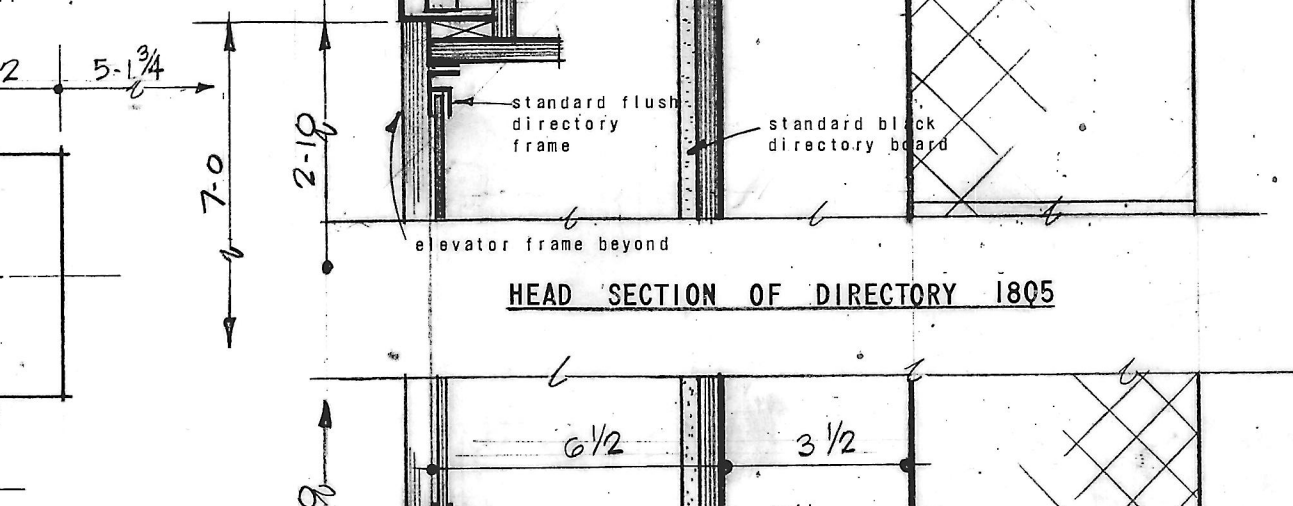
PLAN AT EXTERIOR DOOR JAMBS 18L9



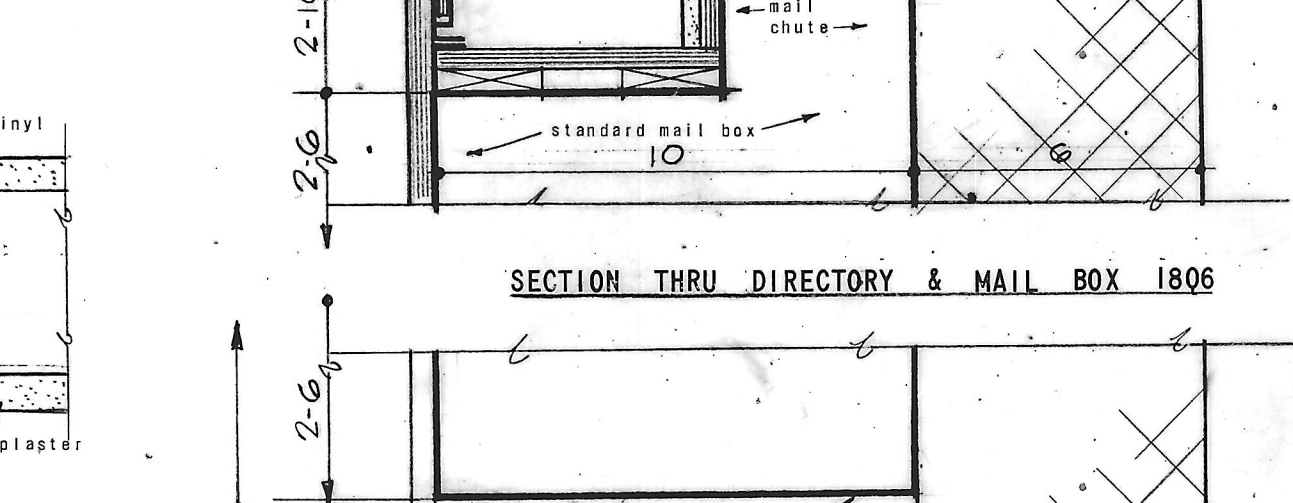
PLAN AT DOOR OPERATOR PLATES 18N9



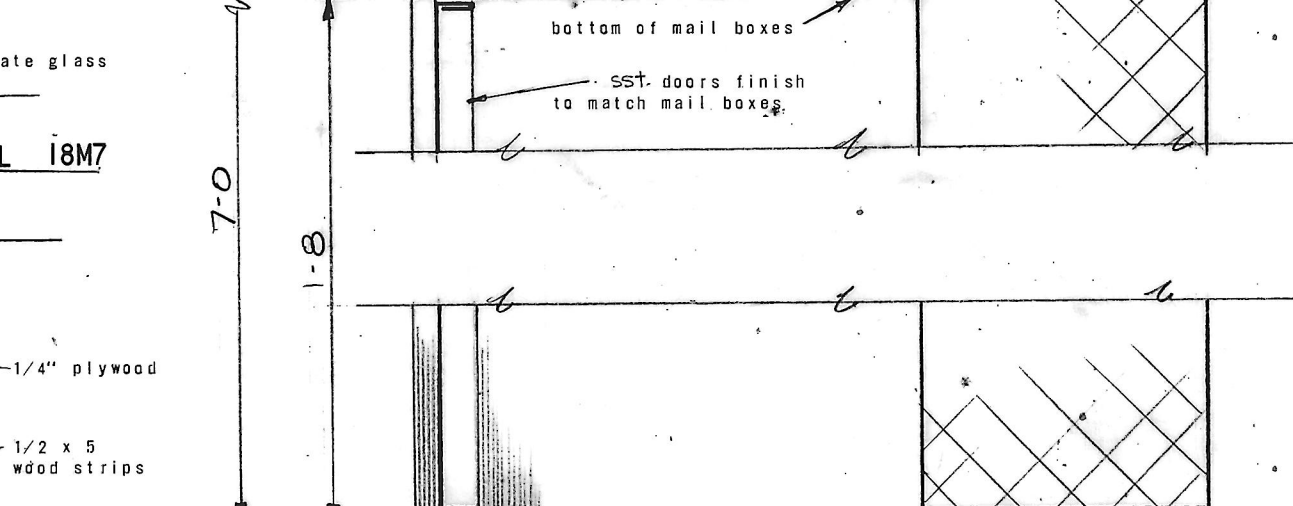
HEAD SECTION OF DIRECTORY 18O5



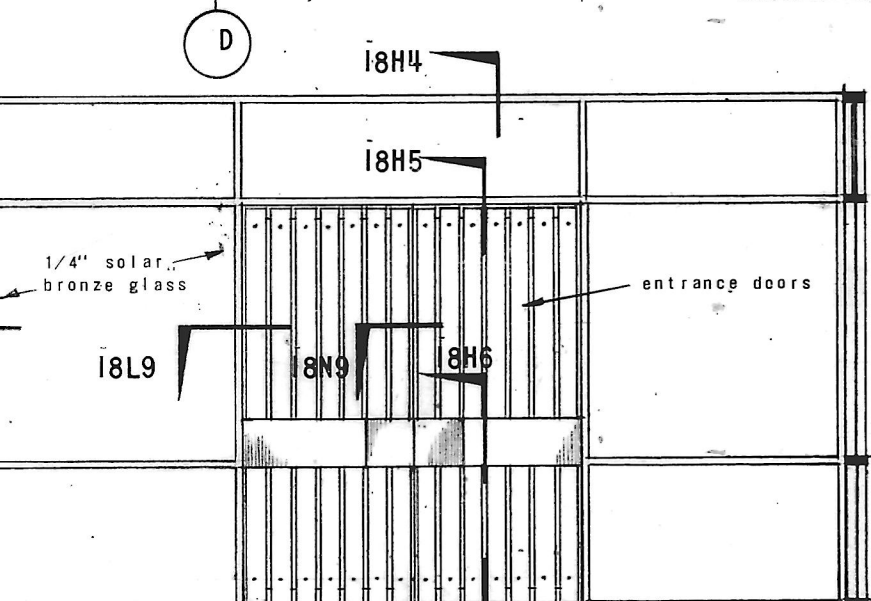
SECTION THRU DIRECTORY & MAIL BOX 18O6



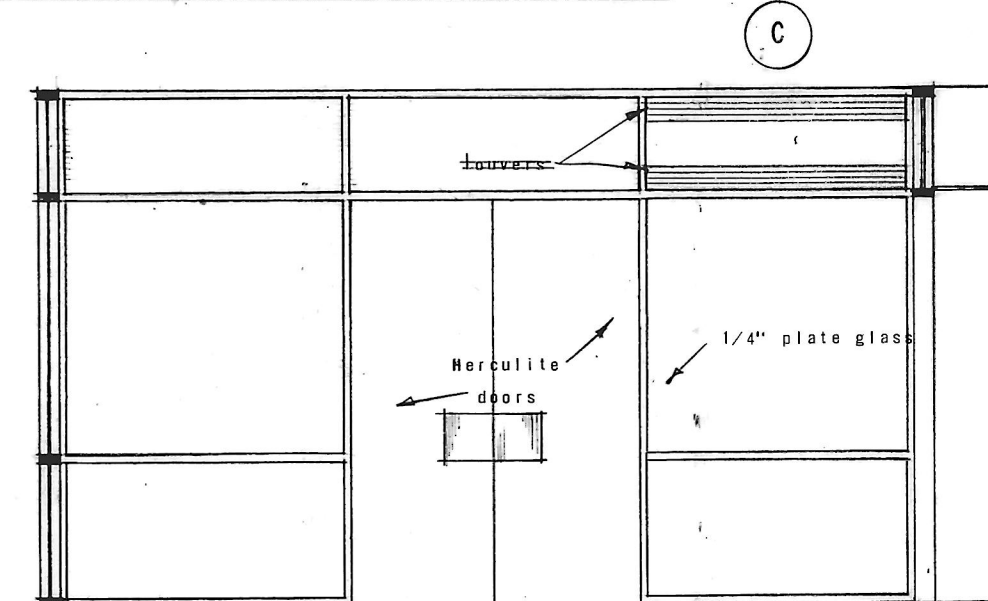
SECTION THRU BASE 18O7



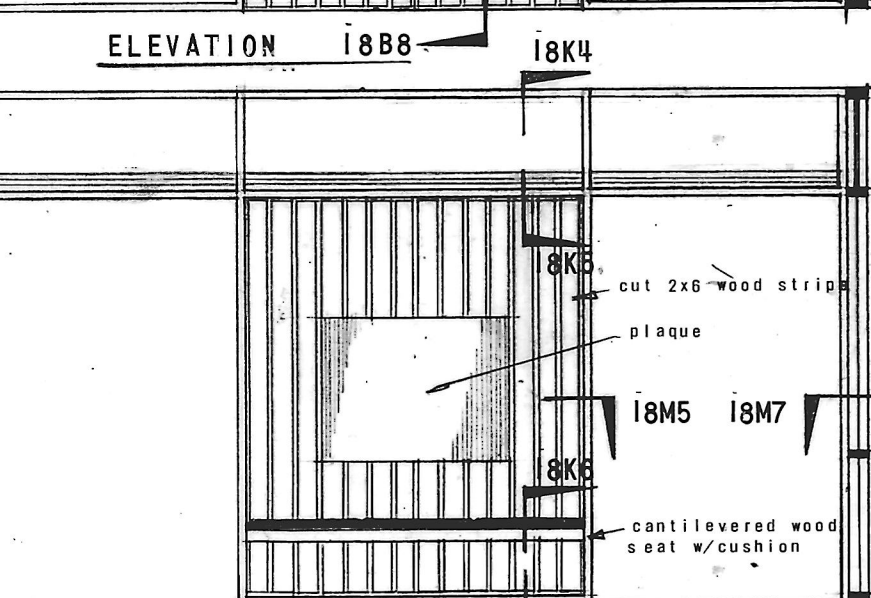
PLAN AT DIRECTORY 18O9



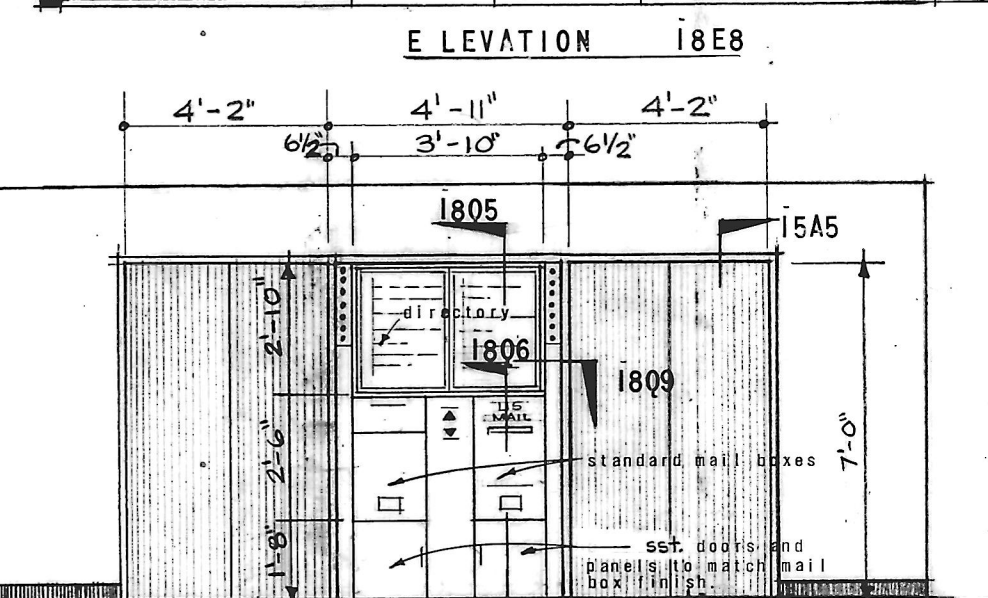
ELEVATION 18B8



ELEVATION 18E8



ELEVATION 18B9



ELEVATION 18E9

REVISIONS			
NO.	DATE	ITEM	REF.
1	3 JAN 67	ADD DIMENSIONS	18E9
2	5 JAN 67	ADD DIMENSIONS	18E9
3	16 JAN 67	ASH TRAY & SHELF	18M5

FIRM: CNA
 DESIGNED BY: PGC
 DRAWN BY: JW
 CHECKED BY: JK
 APPROVED BY: PGC

SEAL: 680-A
 1392-A 1157-A
 STATE OF MARYLAND

STRUCTURAL ENGINEERING
 VAN RENSSLAER P. SAXE
 1701 ST. PAUL ST. BALTO., MD. 21202

MECHANICAL-ELECTRICAL ENGINEERING
 HENRY ADAMS, INC.
 2315 ST. PAUL ST. BALTO., MD. 21218

CHRISTIE, NILES & ANDREWS
 22 N. PENNSYLVANIA AVE.
 TOWSON, MARYLAND 21284
 (410) 521-2800
 (410) 521-0807

OFFICE BUILDING
 FOR
 NOTTINGHAM FARMS INC.
 102 W. PENNSYLVANIA AVE.
 TOWSON, MARYLAND 21204

TOILET
 FIRST FLOOR LOBBY
 ELEVATIONS, SECTION &
 DETAILS

JOB NO. 6522
 SCALE AS NOTED
 DATE SEP 27, 1966
 LAST REV. JAN 67