

ACCESSIBILITY SIGNAGE NOTES:

CHARACTER PROPORTION:

LETTERS AND NUMERALS ON SIGNS SHALL HAVE A WIDTH-TO HEIGHT RATIO BETWEEN 3:5 AND 1:1 AND A STROKE-WIDTH-TO-HEIGHT RATIO BETWEEN 1:5 AND 1:10.

RAISED AND BRAILLE CHARACTERS AND PICTORIAL SYMBOL SIGNS (PICTOGRAMS):

LETTERS AND NUMERALS SHALL BE RAISED 1/32 IN., UPPER CASE, SANS SERIF OR SIMPLE SERIF TYPE AND SHALL BE ACCOMPANIED WITH GRADE BRAILLE. RAISED CHARACTERS SHALL BE AT LEAST 5/8 IN. (16 MM) HIGH, BUT NO HIGHER THAN 2 IN. (50 MM). PICTOGRAMS SHALL BE ACCOMPANIED BY THE EQUIVALENT VERBAL DESCRIPTION PLACED DIRECTLY BELOW THE PICTOGRAM. THE BORDER DIMENSION OF THE PICTOGRAM SHALL BE 6 IN. (152 MM) MINIMUM OF HEIGHT.

FINISH AND CONTRAST:

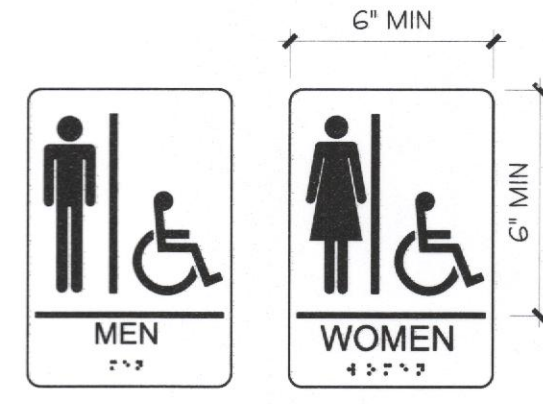
THE CHARACTERS AND BACKGROUND OF SIGNS SHALL BE EGGSHELL, MATTE, OR OTHER NON-GLARE FINISH. CHARACTERS AND SYMBOLS SHALL CONTRAST WITH THEIR BACKGROUND WITH EITHER LIGHT CHARACTERS ON A DARK BACKGROUND OR DARK CHARACTERS ON A LIGHT BACKGROUND.

MOUNTING LOCATION AND HEIGHT:

WHERE PERMANENT IDENTIFICATION IS PROVIDED FOR ROOMS AND SPACES, SIGNS SHALL BE INSTALLED ON THE WALL ADJACENT TO THE LATCH SIDE OF THE DOOR. WHERE THERE IS NO WALL SPACE TO THE LATCH SIDE OF THE DOOR, INCLUDING AT DOUBLE LEAF DOORS, SIGNS SHALL BE PLACED ON THE NEAREST ADJACENT WALL. MOUNTING LOCATION FOR SUCH SIGNAGE SHALL BE SO THAT A PERSON MAY APPROACH WITHIN 3 IN. (76 MM) OF SIGNAGE WITHOUT ENCOUNTERING PROTRUDING OBJECTS OR STANDING WITHIN THE SWING OF THE DOOR. MOUNTING HEIGHT SHALL BE 60 IN. (1525 MM) ABOVE THE FINISH FLOOR TO THE CENTERLINE OF THE SIGN.

SYMBOLS OF ACCESSIBILITY:

FACILITIES AND ELEMENTS REQUIRED TO BE IDENTIFIED AS ACCESSIBLE BY SECTION 4.1 OF THE A.D.A.A.G. SHALL USE THE INTERNATIONAL SYMBOL OF ACCESSIBILITY.



TOILET ROOM WALL MOUNTED SIGNS

FIRE NOTES:

ILLUMINATED EXIT SIGNS SHALL BE PROVIDED THROUGHOUT THE BUILDING. ALL EXIT SIGNS SHALL HAVE BATTERY BACKUP.

THIS BUILDING SHALL BE PROVIDED WITH APPROVED BATTERY POWERED EMERGENCY LIGHTING TO ILLUMINATE ALL REQUIRED MEANS OF EGRESS.

DOORS SHALL BE ARRANGED TO BE OPENED READILY FROM THE EGRESS SIDE WHENEVER THE BUILDING IS OCCUPIED. LOCKS, IF PROVIDED, SHALL NOT REQUIRE THE USE OF A KEY, A TOOL, OR SPECIAL KNOWLEDGE OR EFFORT FOR OPERATION FROM THE EGRESS SIDE.

EMERGENCY LIGHTING UNITS ARE TO BE WIRED INTO THE NORMAL LIGHTING CIRCUIT AND ARRANGED AS TO PROVIDE THE REQUIRED ILLUMINATION AUTOMATICALLY IN THE EVENT OF ANY INTERRUPTION OF NORMAL LIGHTING SUCH AS ANY FAILURE OF PUBLIC UTILITY OR OUTSIDE ELECTRICAL POWER SUPPLY, OPENING OF A CIRCUIT BREAKER OR FUSE, OR ANY MANUAL ACTS INCLUDING ACCIDENTAL OPENING OF SWITCH CONTROLLING NORMAL LIGHTING FACILITIES.

EVERY CLOSET DOOR LATCH SHALL BE SUCH THAT CHILDREN CAN OPEN THE DOOR FROM THE INSIDE OF THE CLOSETS.

EVERY BATHROOM DOOR LOCK SHALL BE DESIGNED TO PERMIT OPENING OF THE LOCKED DOOR FROM THE OUTSIDE IN AN EMERGENCY. THE OPENING DEVICE SHALL BE READILY ACCESSIBLE TO ANYONE OUTSIDE THE DOOR.

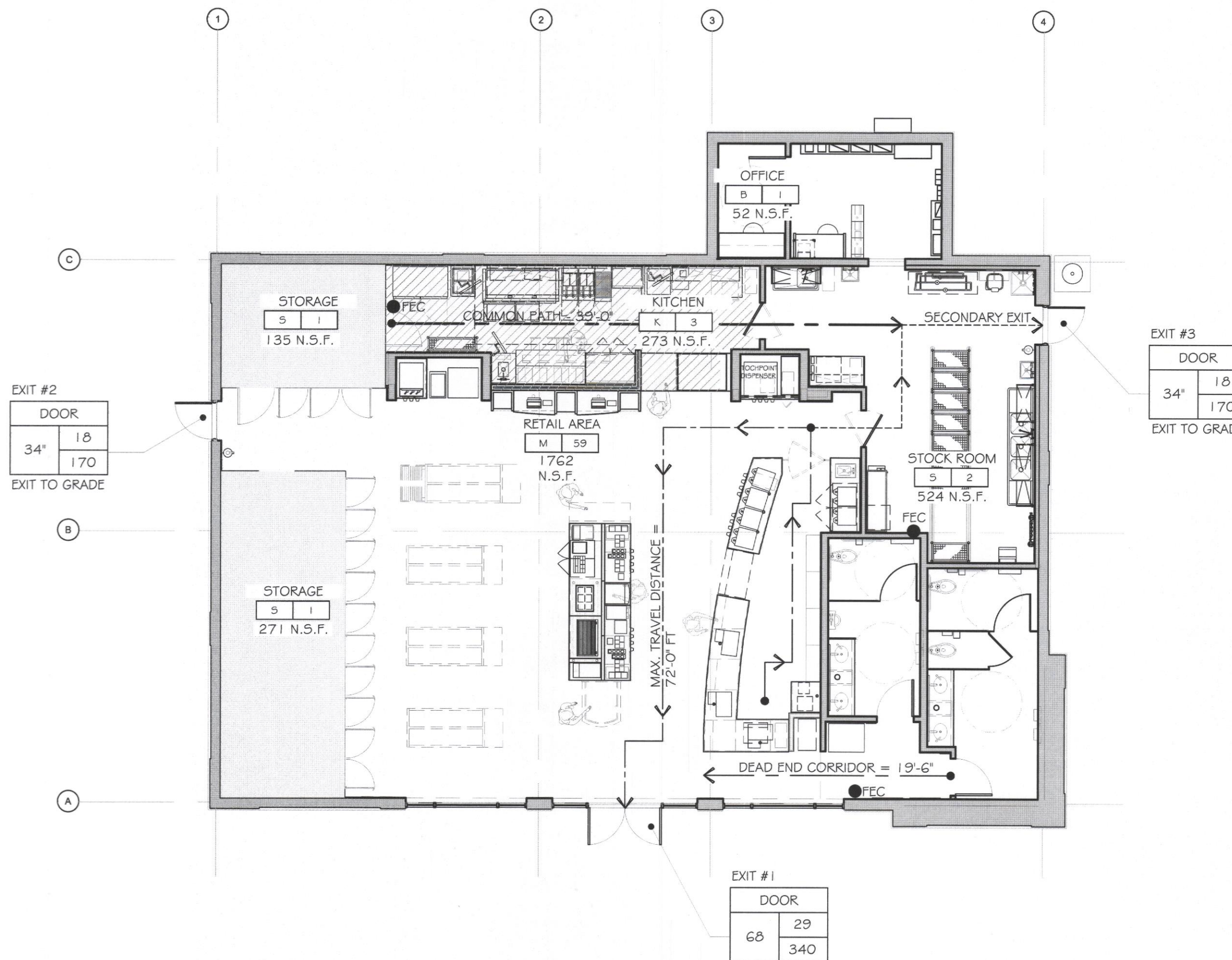
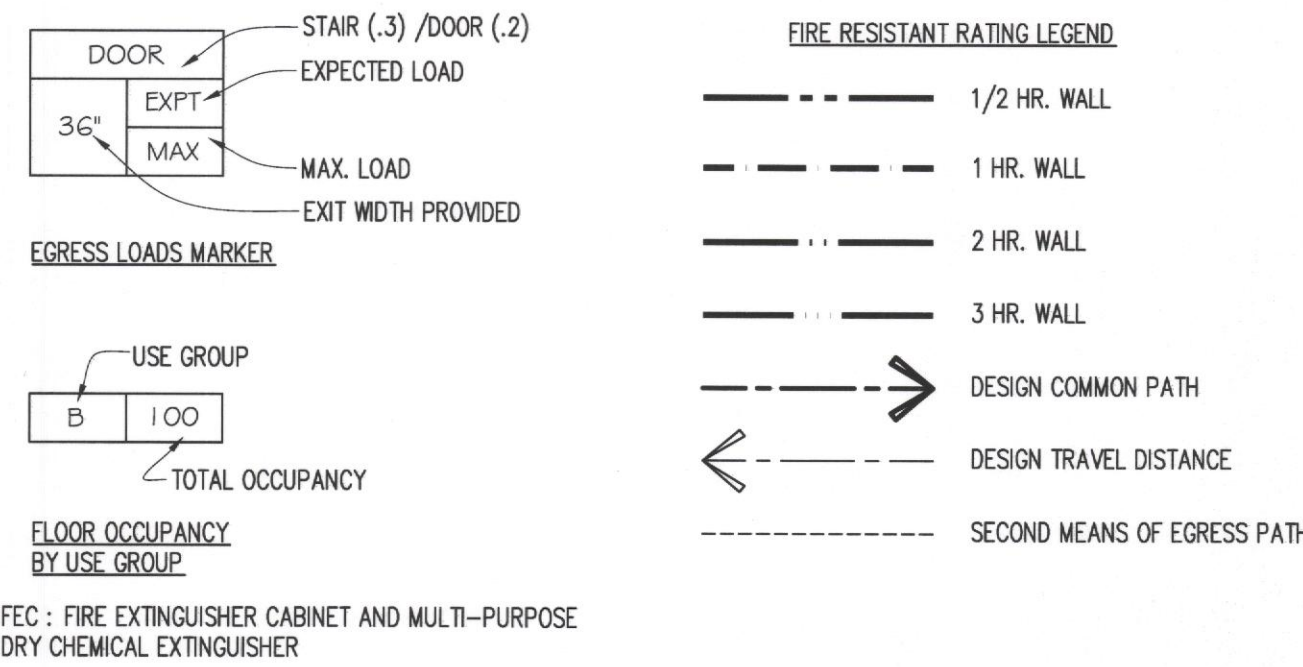
THE ELEVATION OF THE FLOOR SURFACES ON BOTH SIDES OF A DOOR SHALL NOT VARY BY MORE THAN 1/2". THE ELEVATION SHALL BE MAINTAINED ON BOTH SIDES OF THE DOORWAY FOR A DISTANCE NOT LESS THAN THE WIDTH OF THE WIDEST LEAF. THRESHOLDS AT DOORWAYS SHALL NOT EXCEED 1/2" IN HEIGHT. RAISED THRESHOLDS AND FLOOR LEVEL CHANGES IN EXCESS OF 1/4" SHALL BE BEVELED WITH A SLOPE OF NOT STEEPER THAN 1 IN 2.

A LATCH OR OTHER FASTENING DEVICE ON A DOOR SHALL BE PROVIDED WITH A RELEASING DEVICE HAVING AN OBVIOUS METHOD OF OPERATION AND THAT IS READILY OPERATED UNDER ALL LIGHTING CONDITIONS. THE RELEASING MECHANISM FOR ANY LATCH SHALL BE NOT LESS THAN 34", AND NOT MORE THAN 48" ABOVE FINISH FLOOR. DOORS SHALL BE OPERABLE WITH NOT MORE THAN ONE RELEASING OPERATION.

EVERY EXTERIOR AND INTERIOR WALL AND PARTITION SHALL BE FIRE STOPPED AT EACH FLOOR LEVEL, AT THE TOP STORY CEILING LEVEL, AND AT THE LEVEL OF SUPPORT FOR ROOFS.

PORTABLE FIRE EXTINGUISHERS SHALL BE INSTALLED, INSPECTED, AND MAINTAINED IN ACCORDANCE WITH NFPA 10, STANDARD FOR PORTABLE FIRE EXTINGUISHERS

CODE INFORMATION & LIFE SAFETY PLAN LEGEND



G1 LIFE SAFETY PLAN
SCALE: 1/8" = 1'-0"

APPLICABLE CODES

BUILDING	2015 INTERNATIONAL BUILDING CODE
MECHANICAL	2015 INTERNATIONAL MECHANICAL CODE
ELECTRICAL	2014 NATIONAL ELECTRICAL CODE, NFPA 70
PLUMBING	2015 INTERNATIONAL PLUMBING CODE
FUEL & GAS CODE	2015 INTERNATIONAL FUEL AND GAS CODE
ENERGY	2015 INTERNATIONAL ENERGY CONSERVATION CODE
ACCESSIBILITY	ACCESSIBLE AND USEABLE BUILDINGS AND FACILITIES - ICC A117.1-2009
FIRE PREVENTION	2015 NFPA 1
LIFE SAFETY	2015 NFPA 101

GENERAL BUILDING DATA

SECTION 302	BUILDING USE AND OCCUPANCY GROUP	(M) MERCANTILE
TABLE 503	ALLOWABLE HEIGHT AND BUILDING AREAS	ALLOWED 12,500 G.S.F. ACTUAL 3,391 G.S.F.
	AREA PER STORY	1 1
	STORIES ABOVE GRADE PLANE	55' 22'
	FEET ABOVE GRADE PLANE	
SECTION 602	CONSTRUCTION CLASSIFICATION	IIIB
SECTION 903	AUTOMATIC SPRINKLER SYSTEM (NONE)	LIMITED AREA PER NFPA LIFE SAFETY 36.3.2.1.1
SECTION 907	FIRE ALARM AND DETECTION SYSTEM (NONE)	NOT REQUIRED WHEN < 500 OCCUP.

OCCUPANCY LOAD CALCULATION BY SPACE USE

SECTION 1004.1	DESIGN OCCUPANT LOAD	3,391 G.S.F.
	TOTAL SQUARE FOOTAGE	
	TOTAL BUILDING OCCUPANTS	
	STOCKROOM 930 GSF / 300 GSF PER OCCUPANT	= 3.7 OCCUPANTS (4)
	RETAIL AREA 1762 GSF / 30 GSF PER OCCUPANT	= 58.7 OCCUPANTS (59)
	KITCHEN 273 GSF / 200 GSF PER OCCUPANT	= 1.4 OCCUPANTS (1)
	BUSINESS 52 GSF / 100 GSF PER OCCUPANT	= .52 OCCUPANTS (1)
	TOTAL OCCUPANT LOAD	= 65 OCCUPANTS

EGRESS

SECTION 1005.2	MINIMUM REQUIRED EGRESS WIDTH	REQUIRED	ACTUAL
	STAIR (1005.3.1) 0.3 x 65	19.5	N/A
	OTHER (1005.3.1) 0.2 x 65	13	N/A
SECTION 1007.3	ACCESSIBLE MEANS OF EGRESS EXIT STAIRWAYS	N/A	N/A
SECTION 1009.4	STAIRWAY WIDTH	N/A	N/A
SECTION 1010.7.2	RAMP WIDTH	N/A	N/A
SECTION 1014	EXIT ACCESS		
	SECTION 1014.3 COMMON PATH OF EGRESS TRAVEL	75' MAX	39'-0"
	M - USE GROUP		
SECTION 1016	EXIT ACCESS TRAVEL DISTANCE		
	TABLE 1016.2 EXIT ACCESS TRAVEL DISTANCE	200' MAX	72'-0"
	M - USE GROUP		
SECTION 1017	AISLES		
	SECTION 1017.4 M - USE GROUP	36" MIN	42"
	SECTION 1017.4 AISLE ACCESSWAYS (M-USE GROUP)	30" MIN	42"
SECTION 1018.2	CORRIDOR WIDTH	44" MIN	48"
SECTION 1018.4	DEAD END CORRIDOR	20' MAX	19'-6"
TABLE 1021.1	MIN. NUMBER OF EXITS REQUIRED	2	3

BUILDING FIRE RESISTANCE RATINGS

TABLE 601	FIRE RESISTANT RATING REQUIREMENTS FOR BUILDING ELEMENTS	REQUIRED	PROVIDED	U.L. ASSY.
	STRUCTURAL FRAME	0 HOURS	0 HOURS	-
	BEARING WALLS			
	INTERIOR	0 HOURS	0 HOURS	-
	EXTERIOR	0 HOURS	0 HOURS	-
	NON-BEARING WALLS AND PARTITIONS	(TABLE 602)	(TABLE 602)	(TABLE 602)
	EXTERIOR			
	NON-BEARING WALLS AND PARTITIONS	0 HOURS	0 HOURS	-
	INTERIOR	0 HOURS	0 HOURS	-
	FLOOR CONSTRUCTION			
	INCLUDING SUPPORTING BEAMS AND JOIST	0 HOURS	0 HOURS	-
	ROOF CONSTRUCTION			
	INCLUDING SUPPORTING BEAMS AND JOIST	0 HOURS	0 HOURS	-
TABLE 602	FIRE RATING OF EXTERIOR WALLS BASED ON SEPARATION DISTANCE			
	10'-0" to 30'-0"	0 HOURS	0 HOURS	-

PLUMBING FIXTURE COUNT

TABLE 2902.1	OCCUPANCY CLASSIFICATION	M
	TOTAL OCCUPANT LOAD	65
	NO. OF MALE OCCUPANTS	33
	NO. OF FEMALE OCCUPANTS	33

GENDER	WATER CLOSETS		LAVATORIES		DRINKING FOUNTAINS		SERVICE SINKS	
	REQUIRED	PROVIDED	REQUIRED	PROVIDED	REQUIRED	PROVIDED	REQUIRED	PROVIDED
MALE	1 PER 500	2*	1 PER 750	2				
					1	0**	1	1
FEMALE	1 PER 500	2	1 PER 750	2				

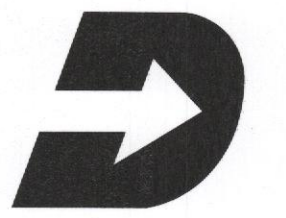
* ONE URINAL IS PROVIDED PER 419.2 OF THE IPC.
** FREE WATER IS PROVIDED AT SODA DISPENSING MACHINE.



L2M
811 Cromwell Park Drive, Suite 113
Cromwell Business Park at BW1
Glen Burnie, Maryland 21061
L2M@L2M.com
Phone: 410.863.1302
Fax: 410.863.1308

L2M
ARCHITECTS

I certify that these documents were prepared or approved by me, and that I am a duly licensed architect under the laws of the State of Maryland Lic. 8839 Exp. 07 December 2017.



DASH IN
STORE #079
QUARTERFIELD RD - SEVERN, MD

REV. # ISSUE/DESCRIPTION DATE

SHEET TITLE:
CODE INFO / LIFE SAFETY PLAN

DRAWING DATE:
01 APRIL 2017
DRAWN BY: STAFF
REVIEWED BY: SDL
PROJECT #
15.108
SHEET #

G-002

FILE NAME:
15.108 - G-002.dwg