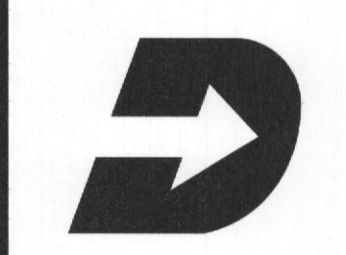




L2M
 811 Cromwell Park Drive, Suite 113
 Cromwell Business Park at BWI
 Glen Burnie, Maryland 21061
 L2M@L2M.com
 Phone: 410.863.1302
 Fax: 410.863.1308

L2M
 ARCHITECTS

I certify that these documents were prepared or approved by me, and that I am a duly licensed architect under the laws of the State of Maryland Lic. #8338 Exp. 07 December 2017.



DASH IN
 STORE #079
 QUARTERFIELD RD - SEVERN, MD

REV. #	ISSUE / DESCRIPTION	DATE

SHEET TITLE:

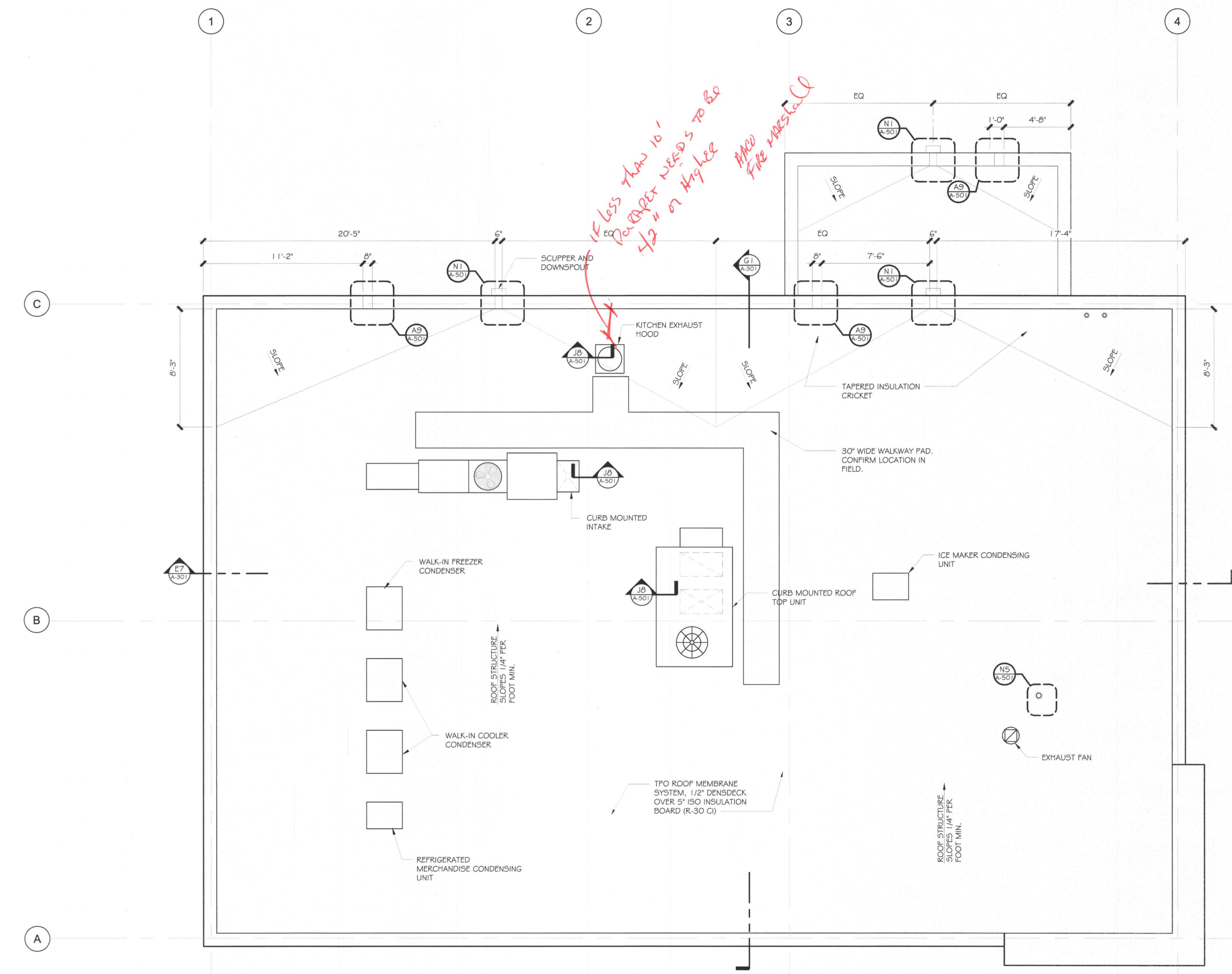
ROOF PLAN

DRAWING DATE:
 01 APRIL 2017
 DRAWN BY:
 STAFF
 REVIEWED BY:
 SDL

PROJECT #
 15.108
 SHEET #

A-103

FILE NAME:
 15.108 - A-103.dwg



D1 ROOF PLAN
 SCALE: 1/4" = 1'-0"