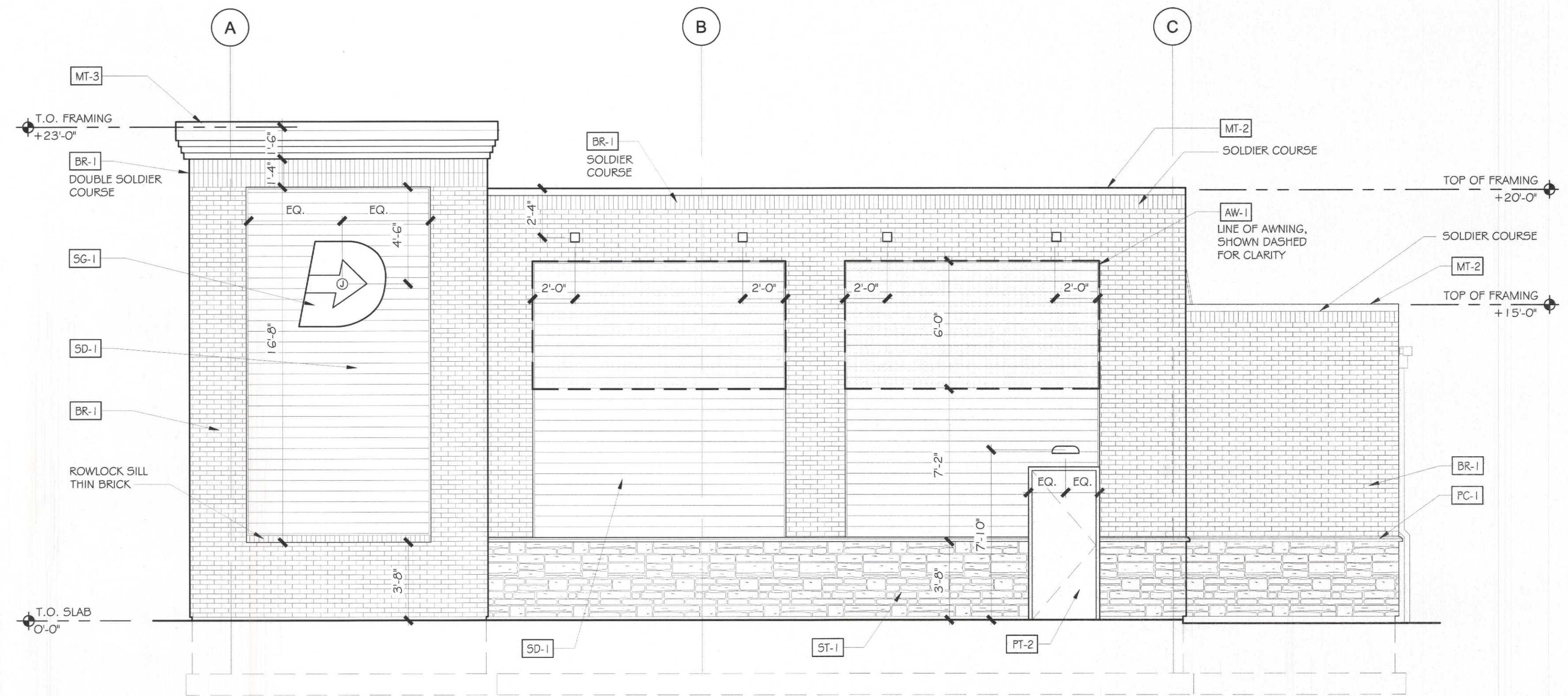


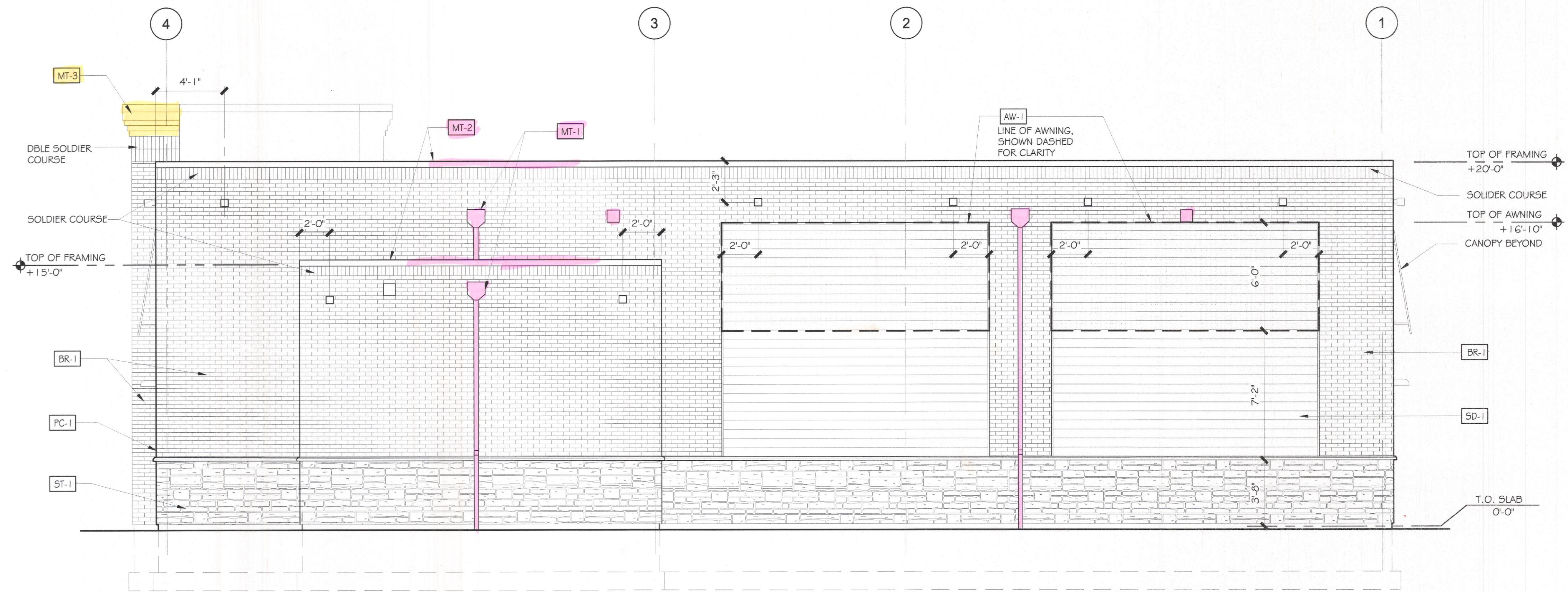
GENERAL NOTES

1. ALL EXTERIOR SIGNS ARE PROVIDED AND INSTALLED BY TENANT'S SIGN CONTRACTOR. ALL ELECTRICAL CONNECTIONS ARE BY ELECTRICAL CONTRACTOR. REFER TO ELECTRICAL DRAWINGS FOR ADDITIONAL INFORMATION.
2. REFER TO MANUFACTURER'S INSTALLATION INSTRUCTIONS FOR ALL EXTERIOR FINISHES.
3. COLORS NOT INDICATED SHALL BE SELECTED BY OWNER FROM MANUFACTURER'S FULL RANGE.
4. ALL EXPOSED EXTERIOR STEEL TO BE GALVANIZED AND PREPPED TO RECEIVE PAINT.

EXTERIOR FINISH SCHEDULE					
NO.	DESCRIPTION	MFR.	MODEL #	COLOR	REMARKS
AW-1	FABRIC AWNINGS	--	--	--	COLOR AND GRAPHIC DESIGN TO BE DETERMINED
BR-1	THIN BRICK	MCKEER BRICK & BLOCK	SANDMOLD SERIES, MODULAR	GENOVA	MORTAR: WORKRITE #2223 TYPE "S" MASONRY CEMENT.
MT-1	METAL DOWN SPOUTS & SCUPPERS	ENGLERT		TO MATCH PT-1 <i>Colonial Red</i>	
MT-2	METAL COPING	ENGLERT		COLONIAL RED	
MT-3	METAL COPING	ENGLERT		BONE WHITE	
PC-1	PRECAST WATERTABLE	ELDORADO STONE	SPLIT EDGE WAINSCOT SILL	WHITE CLOUD	
PC-2	PRECAST WALL CAP	ELDORADO STONE	SPLIT EDGE WALL CAP	WHITE CLOUD	
PT-1	THOROSEAL WATERPROOF PAINT	THORO PRODUCTS		COLOR TO MATCH PC-1	
PT-2	EXTERIOR DOOR & FRAME	SHERWIN WILLIAMS		6096 JUTE BROWN	
SD-1	FIBER CEMENT PANELS	NICHIHA	VINTAGE WOOD	<i>BARK Ash Column 1-31-18 PER TIM</i>	
ST-1	PRECAST STONE	ELDORADO	PRECAST STACKED STONE	NANTUCKET	



G7 NORTH ELEVATION
SCALE: 1/4" = 1'-0"



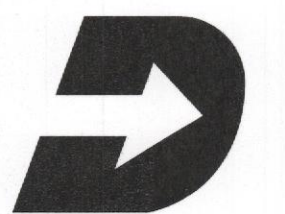
F1 WEST ELEVATION
SCALE: 1/4" = 1'-0"



L2M
811 Cromwell Park Drive, Suite 113
Cromwell Business Park at BWI
Clen Burnie, Maryland 21061
L2M@L2M.com
Phone 410.863.1302
Fax 410.863.1308

L2M
ARCHITECTS

I certify that these documents were prepared or approved by me, and that I am a duly licensed architect under the laws of the State of Maryland Lic. #838 Exp. 07 December 2017.



DASH IN
STORE #079
QUARTERFIELD RD - SEVERN, MD

REV. #	ISSUE / DESCRIPTION	DATE

SHEET TITLE:
EXTERIOR ELEVATIONS

DRAWING DATE:
01 APRIL 2017
DRAWN BY:
STAFF
REVIEWED BY:
SDL
PROJECT #
15.108
SHEET #

A-202

FILE NAME:
15.108 - A-202.dwg