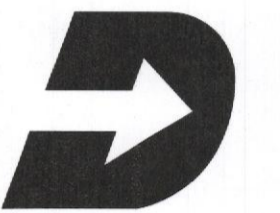




L2M
811 Cromwell Park Drive, Suite 113
Cromwell Business Park # B01
Glen Burnie, Maryland 21061
L2M@L2M.com
Phone 410.863.1302
Fax 410.863.1308

L2M
ARCHITECTS

I certify that these documents were prepared or approved by me, and that I am a duly licensed architect under the laws of the state of Maryland Lic. #8339 Exp. 07 December 2017.



DASH IN
STORE #079
QUARTERFIELD RD - SEVERN, MD

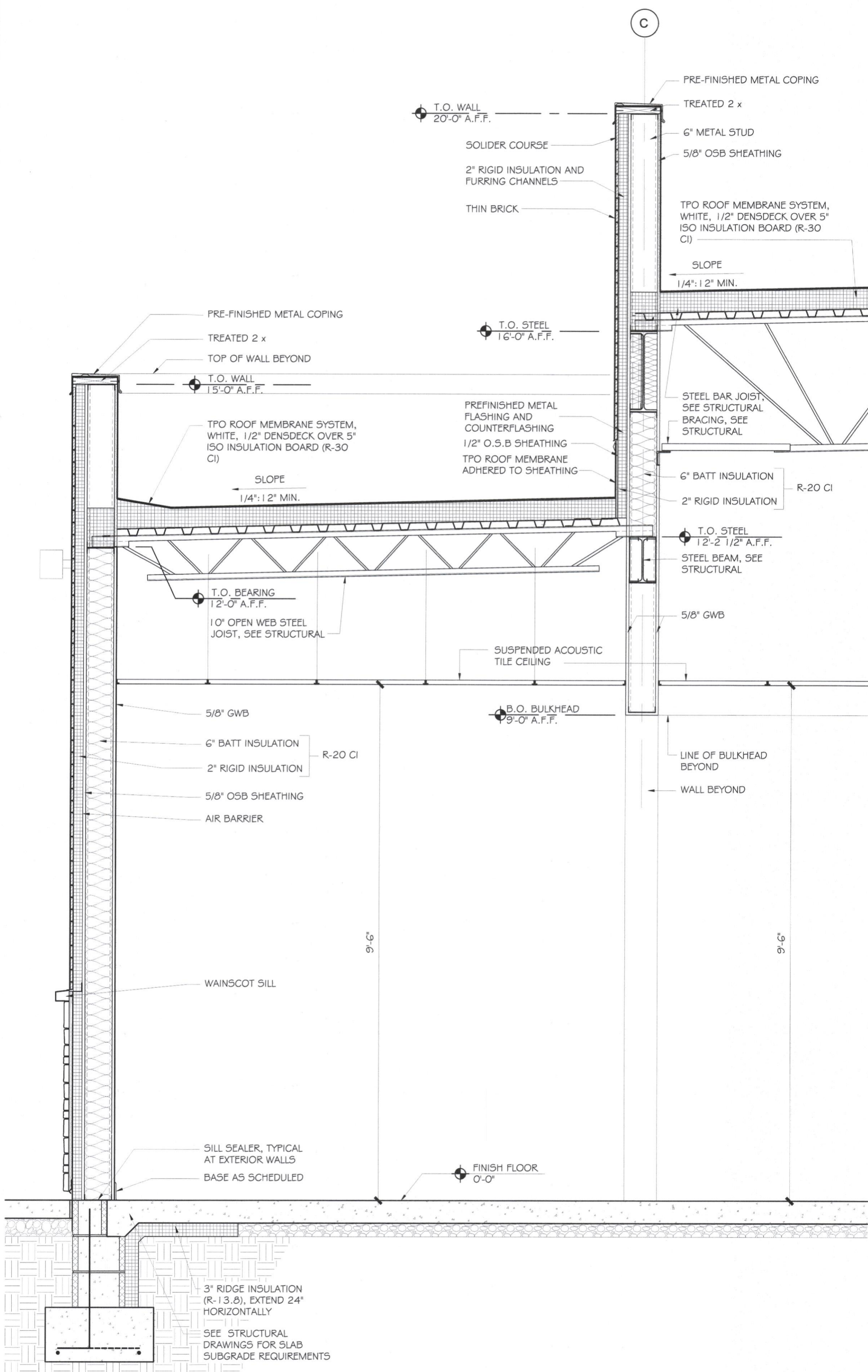
REV. #	ISSUE/DESCRIPTION	DATE

SHEET TITLE:
WALL SECTIONS

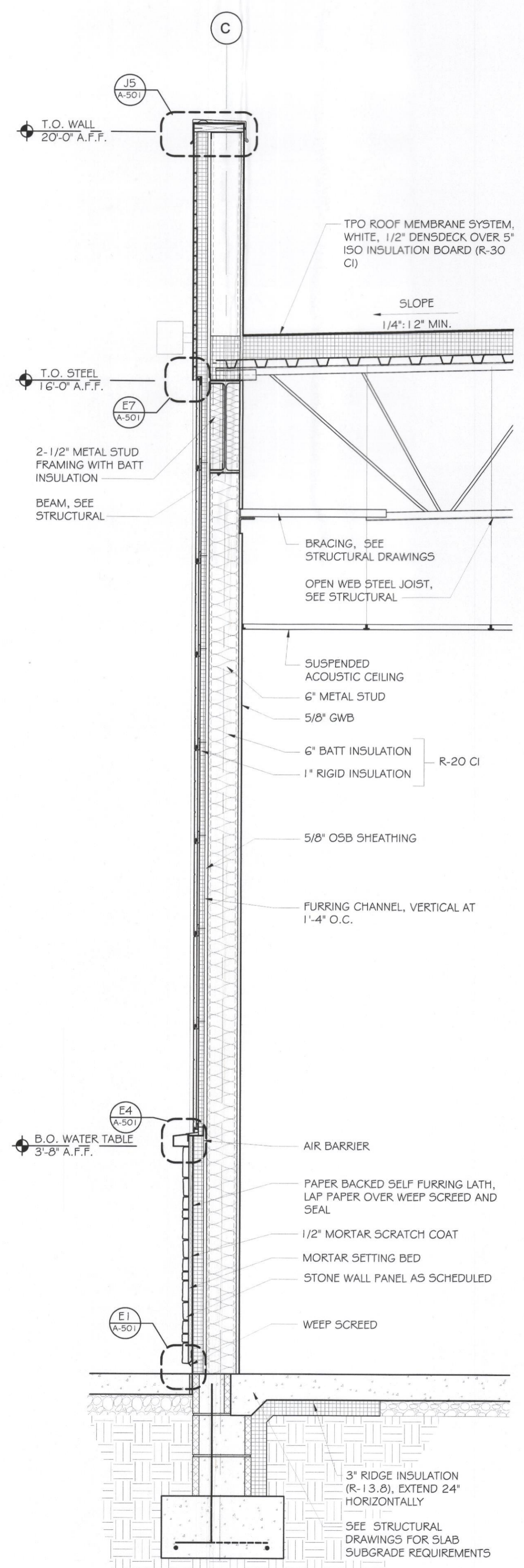
DRAWING DATE:
01 APRIL 2017
DRAWN BY: **STAFF**
REVIEWED BY: **SDL**
PROJECT #
15.108
SHEET #

A-401

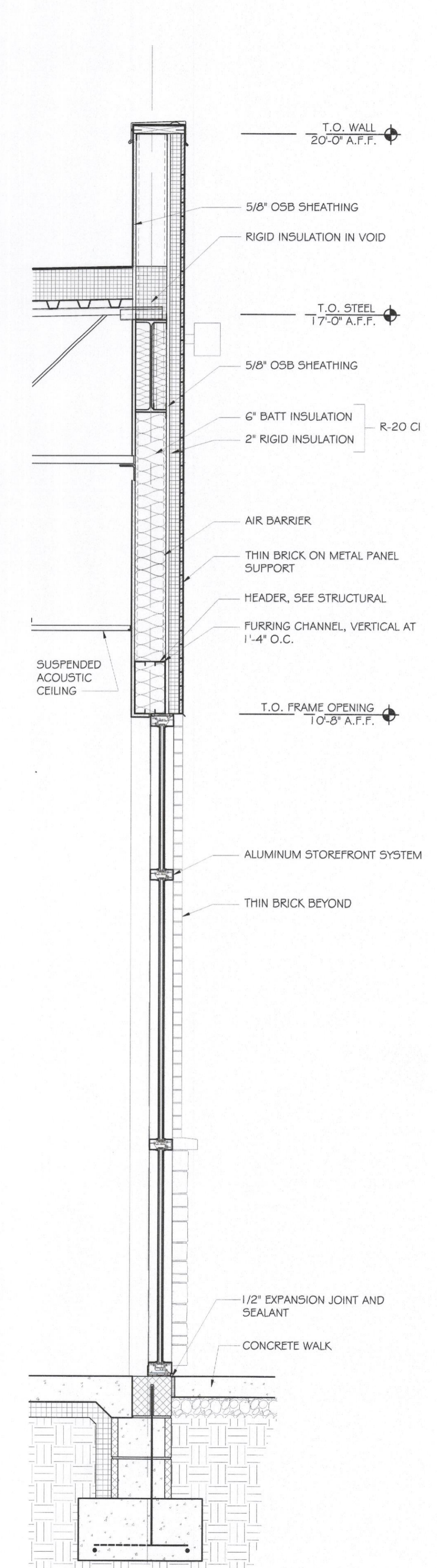
FILE NAME:
15.108 - A-401 .dwg



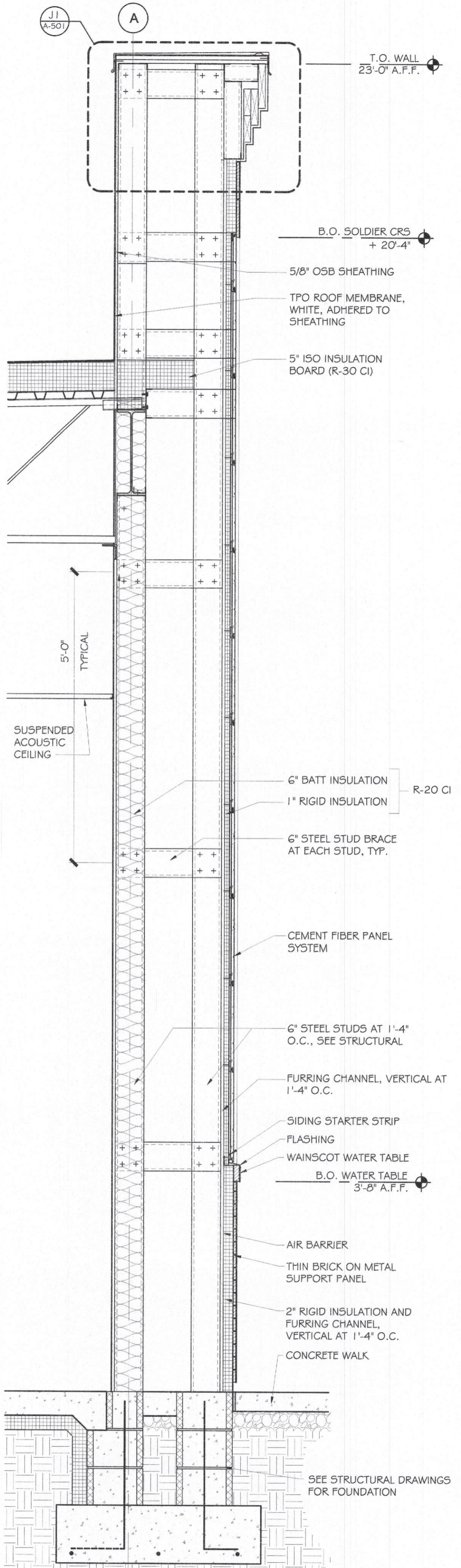
A1 WALL SECTION
SCALE: 3/4" = 1'-0"



G1 WALL SECTION
SCALE: 3/4" = 1'-0"



L1 WALL SECTION
SCALE: 3/4" = 1'-0"



P1 WALL SECTION
SCALE: 3/4" = 1'-0"