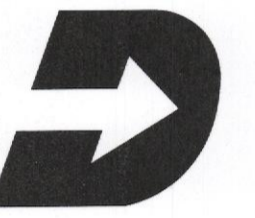




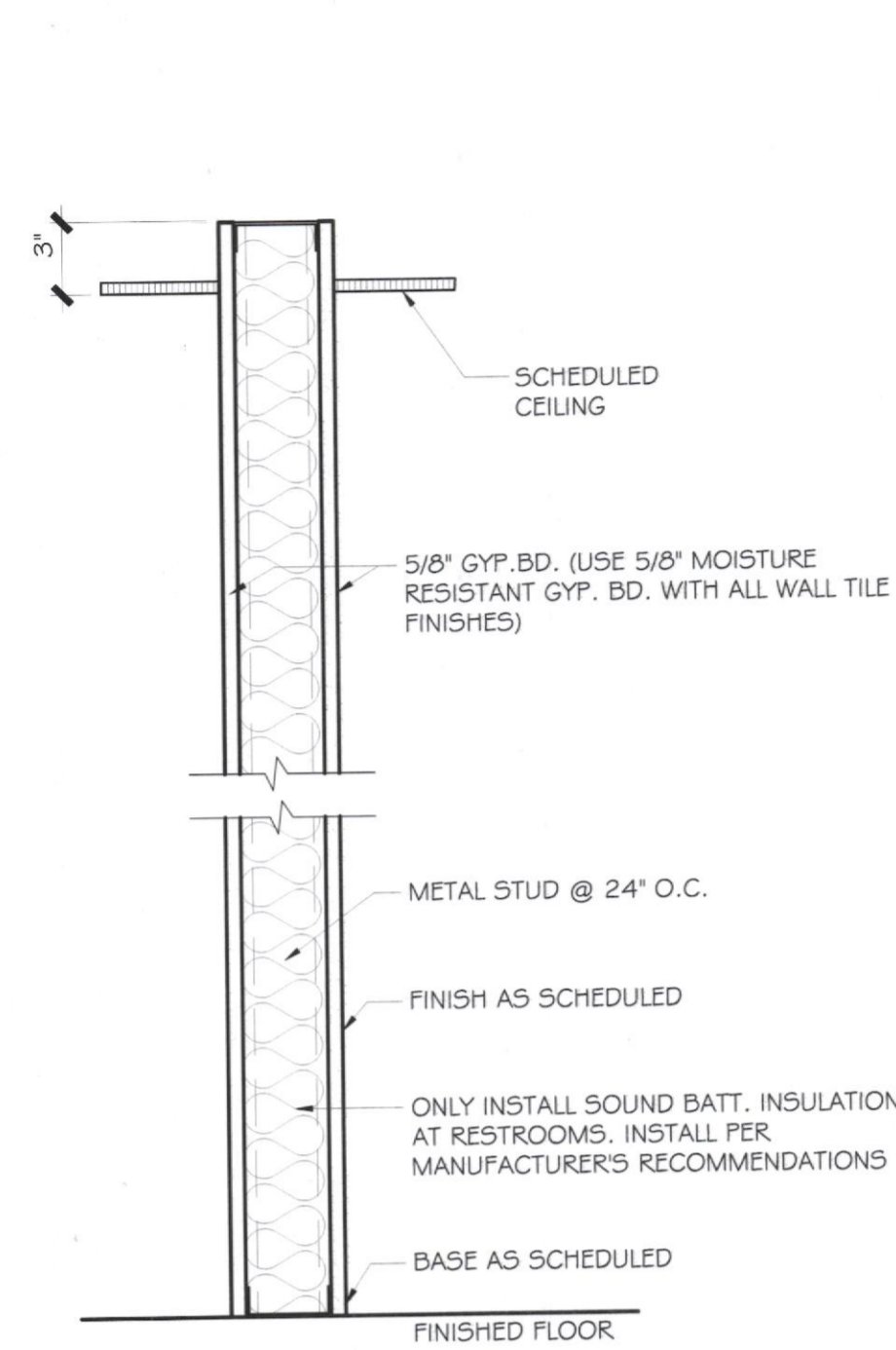
L2M
811 Cromwell Park Drive, Suite 113
Cromwell Business Park at BWI
Glen Burnie, Maryland 21061
L2M@L2M.com 410.863.1302
Phone Fax 410.863.1308

L2M
ARCHITECTS

I certify that these documents were prepared or approved by me, and that I am a duly licensed architect under the laws of the state of Maryland, Lic. 9839 Exp. 07 December 2017.



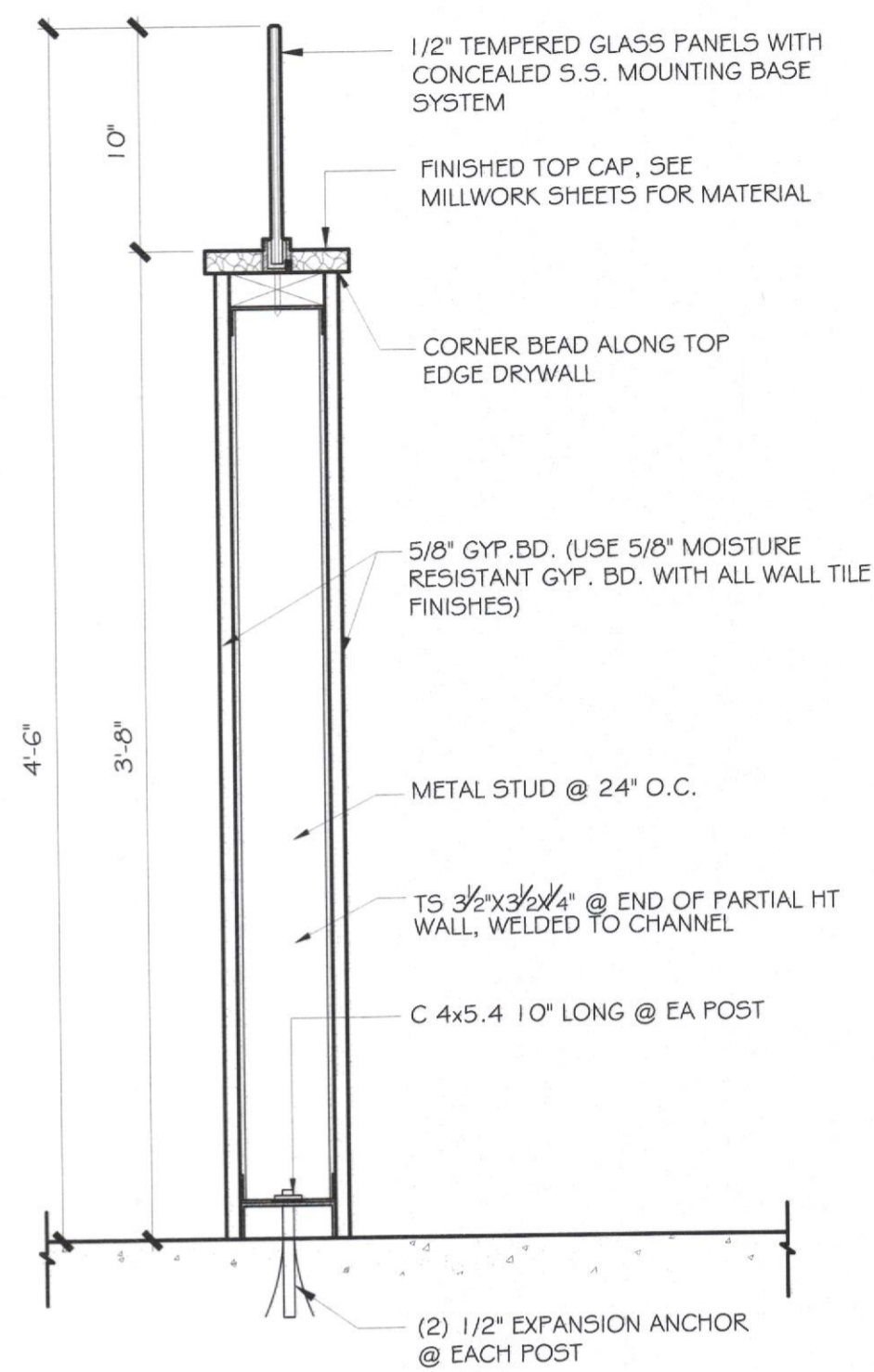
DASH IN
STORE #531
RITCHIE HIGHWAY - PASADENA, MD



NOTE: PROVIDE MOISTURE RESISTANT GYPSUM BOARD AT WET AREAS

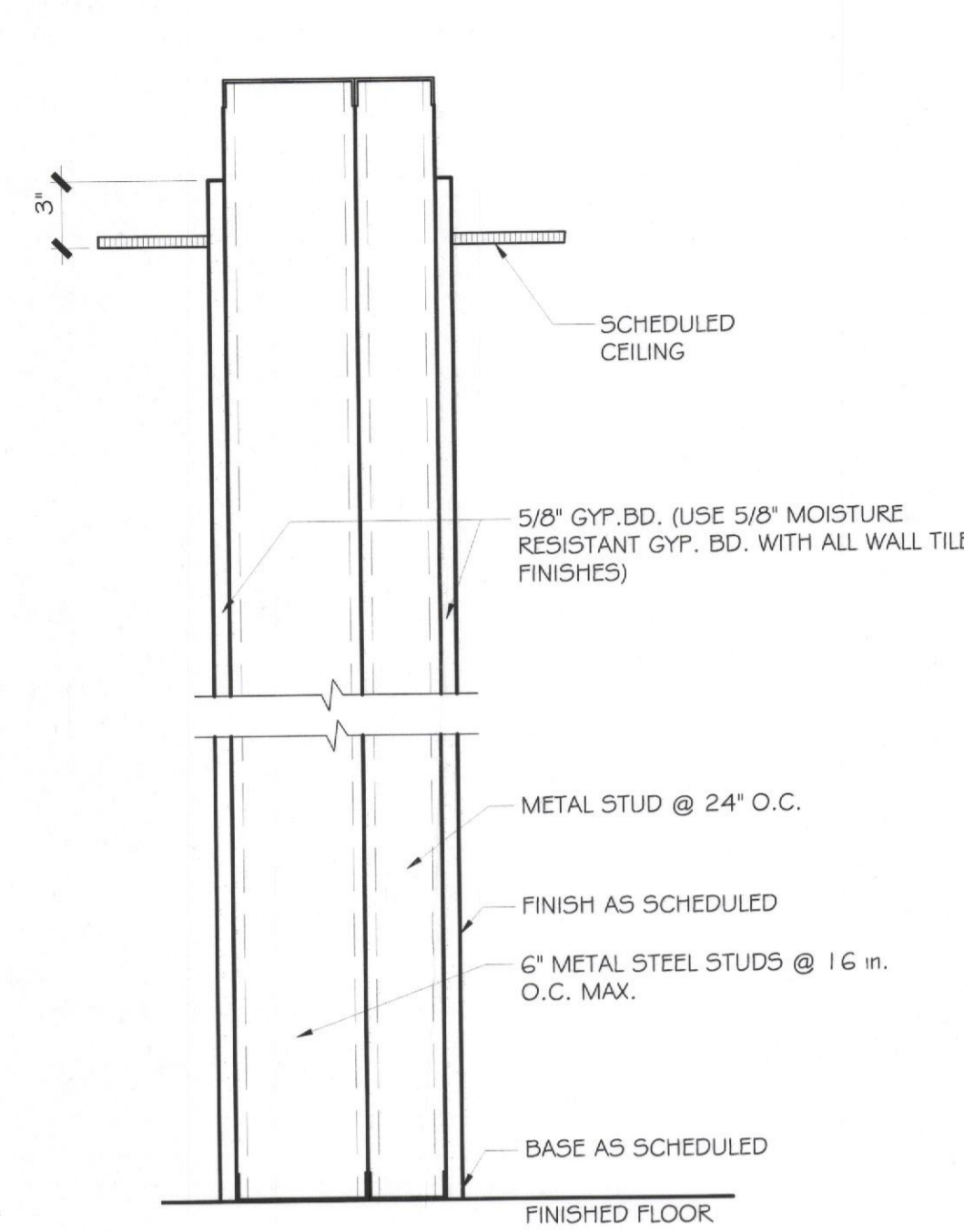
- A SEE PLAN DIMENSION
- A1 USE 1 5/8" MTL STUDS
- A2 USE 2 1/2" MTL STUDS
- A3 USE 3 5/8" MTL STUDS
- AG USE 6" MTL STUDS
- AG1 USE 8" MTL STUDS

A PARTITION TYPE A
NON-RATED SCALE: 1 1/2" = 1'-0"



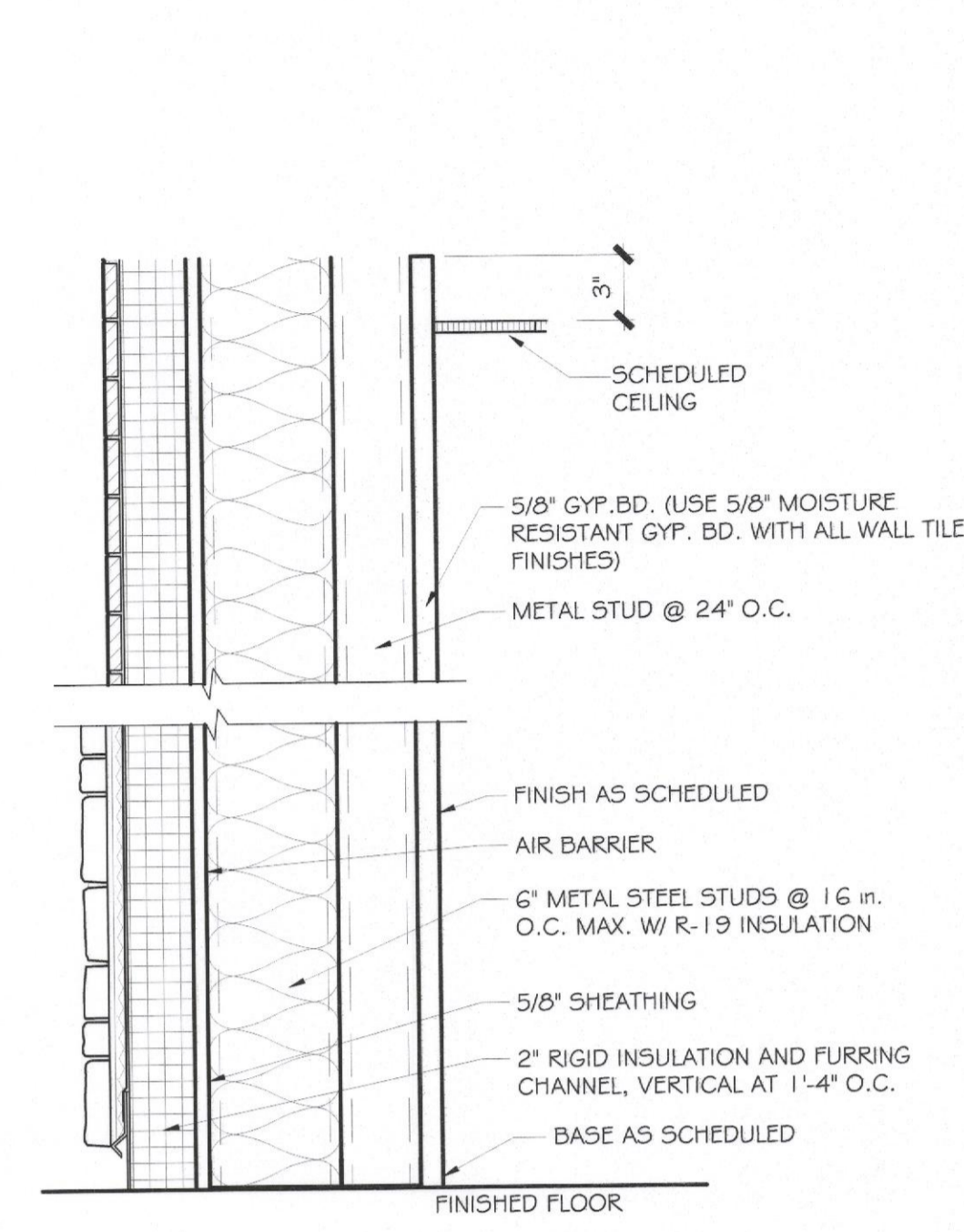
- B NOT USED
- B1 USE 1 5/8" MTL STUDS
- B2 USE 2 1/2" MTL STUDS
- B3 USE 3 5/8" MTL STUDS
- B6 USE 6" MTL STUDS
- B61 8" THICKNESS TO FINISH

B PARTITION TYPE B
NON-RATED SCALE: 1 1/2" = 1'-0"



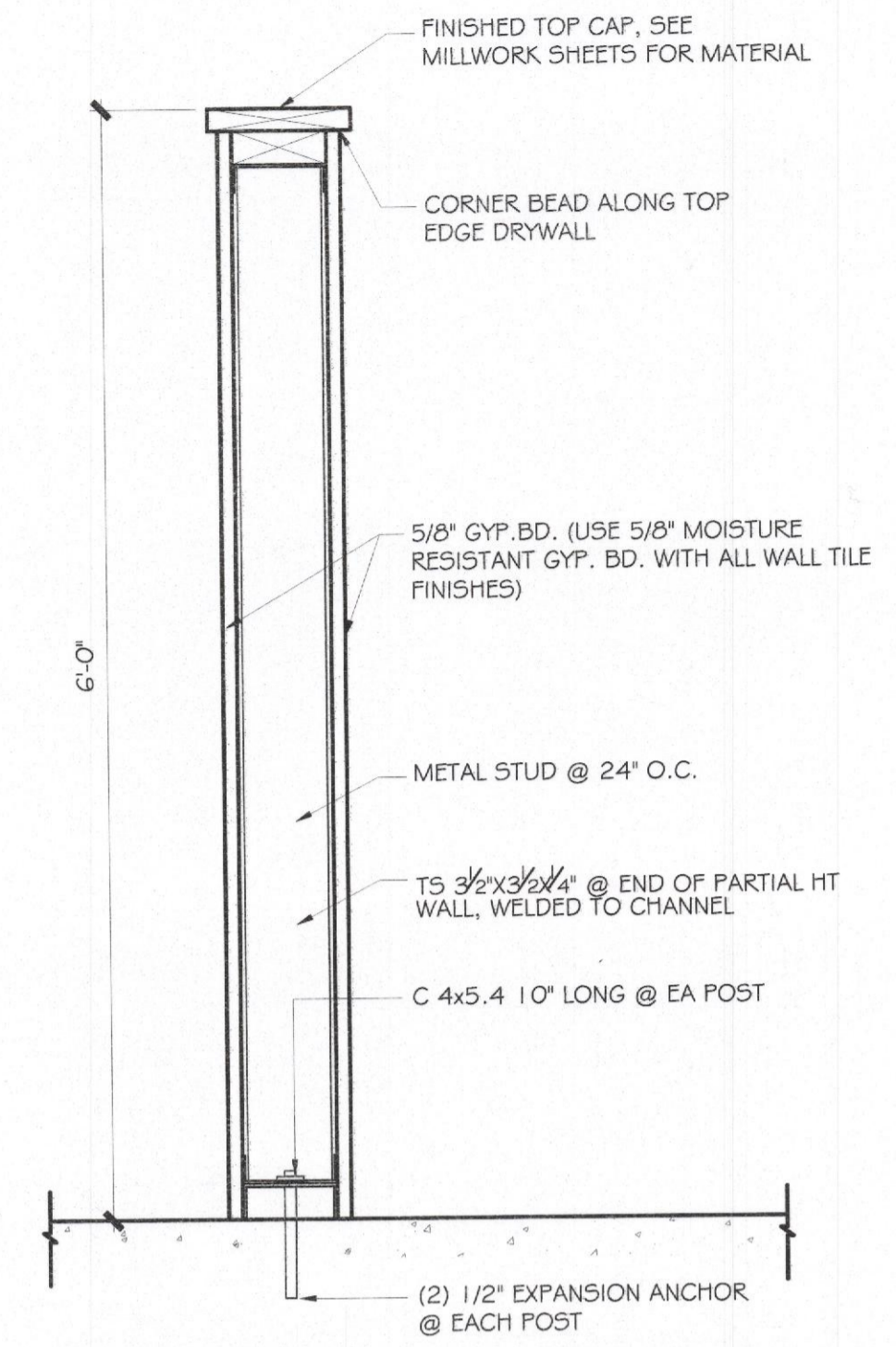
- C USE 3 5/8" MTL STUDS

C PARTITION TYPE C
NON-RATED SCALE: 1 1/2" = 1'-0"



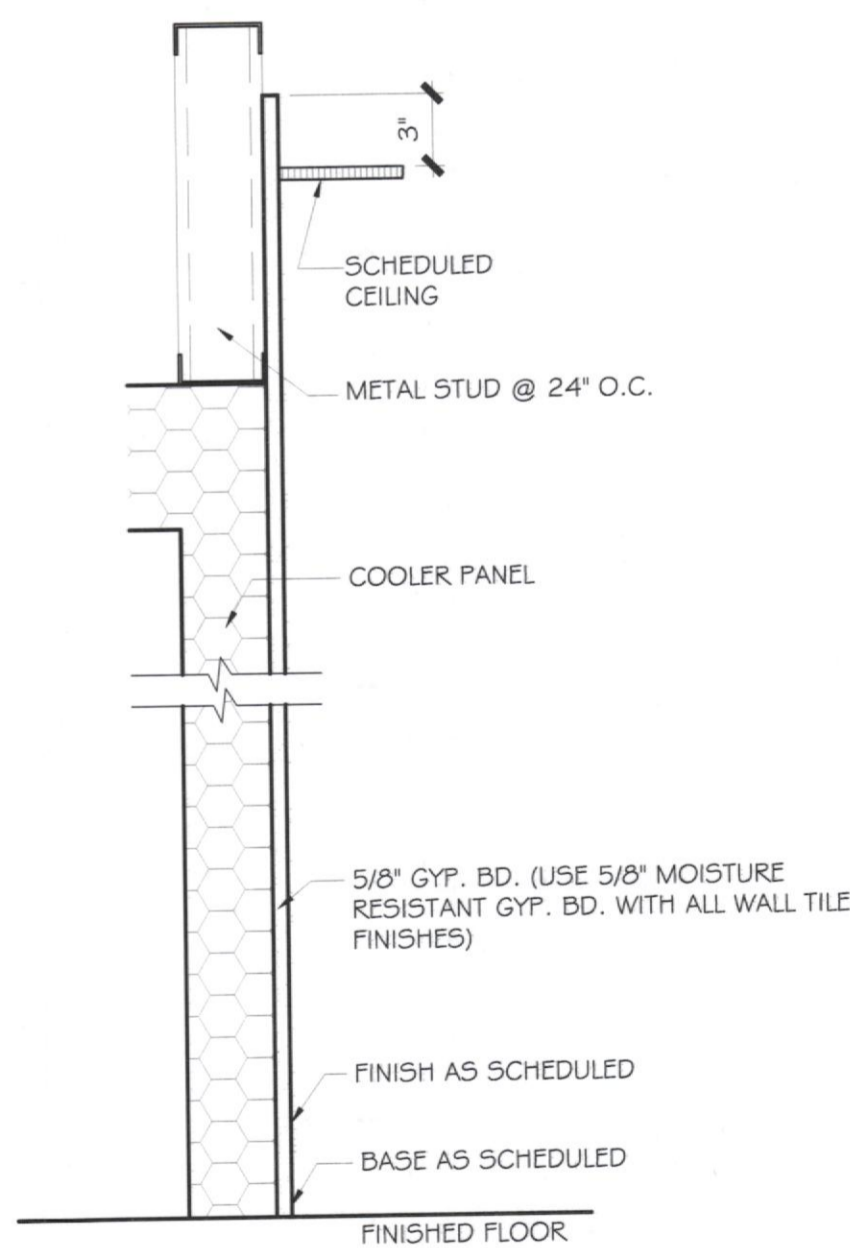
- D USE 3 5/8" MTL STUDS

D PARTITION TYPE D
NON-RATED SCALE: 1 1/2" = 1'-0"



- E NOT USED
- E1 USE 1 5/8" MTL STUDS
- E2 USE 2 1/2" MTL STUDS
- E3 USE 3 5/8" MTL STUDS
- E6 USE 6" MTL STUDS
- E61 8" THICKNESS TO FINISH

E PARTITION TYPE E
NON-RATED SCALE: 1 1/2" = 1'-0"



- F USE 3 5/8" MTL STUDS

F PARTITION TYPE F
NON-RATED SCALE: 1 1/2" = 1'-0"

GENERAL GYPSUM BOARD FINISH NOTES.

ALL GYPSUM BOARD SHALL BE FINISHED AS INDICATED BELOW & IN ACCORDANCE WITH THE "LEVELS OF GYPSUM BOARD FINISH" TABLE & ASTM C840 LATEST EDITION "STANDARD SPECIFICATION FOR APPLICATION AND FINISH OF GYPSUM BOARD" UNLESS OTHERWISE NOTED IN THE CONTRACT DOCUMENTS.

TEMPORARY CONSTRUCTION & AREAS WHERE WALL FINISH HAS NOT BEEN ESTABLISHED SHALL BE FINISHED TO "LEVEL 0"

PLENUM AREAS ABOVE CEILINGS, ATTIC AREAS, BUILDING SERVICE CORRIDORS, CONCEALED AREAS, & AREAS NOT NORMALLY OPEN TO PUBLIC VIEW SHALL BE FINISHED TO "LEVEL 1"

AREAS WHERE WATER RESISTANT GYPSUM BACKING BOARD (ASTM C630) IS USED AS A SUBSTRATE FOR TILE, GARAGES & STORAGE AREAS SHALL BE FINISHED TO "LEVEL 2"

ALL AREAS TO RECEIVE HEAVY OR MEDIUM TEXTURED FINISHES BEFORE FINAL PAINTING OR WHERE HEAVY GRADE WALL COVERINGS ARE SCHEDULED SHALL BE FINISHED TO "LEVEL 3"

ALL AREAS TO RECEIVE LIGHT TEXTURED FINISH OR FLAT PAINTS & ALL AREAS NOT LISTED ABOVE & VIEWED BY THE PUBLIC SHALL BE FINISHED TO "LEVEL 4"

"LEVEL 5" FINISH SHALL BE USED WHERE SPECIFICALLY NOTED TO RECEIVE "LEVEL 5" FINISH IN THE CONTRACT DOCUMENTS

ALL AREAS TO RECEIVE 3/8" PLYWOOD BLOCKING TO BE COVERED WITH 1/4" GYPSUM BOARD.

GENERAL WALL TYPE SCHEDULE NOTES.

1. INTERIOR SUBSTRATES:
THE FOLLOWING SUBSTRATES SHALL BE USED AS INDICATED BELOW FOR ALL INTERIOR PARTITIONS UNLESS NOTED OTHERWISE ELSEWHERE IN THE CONTRACT DOCUMENTS.

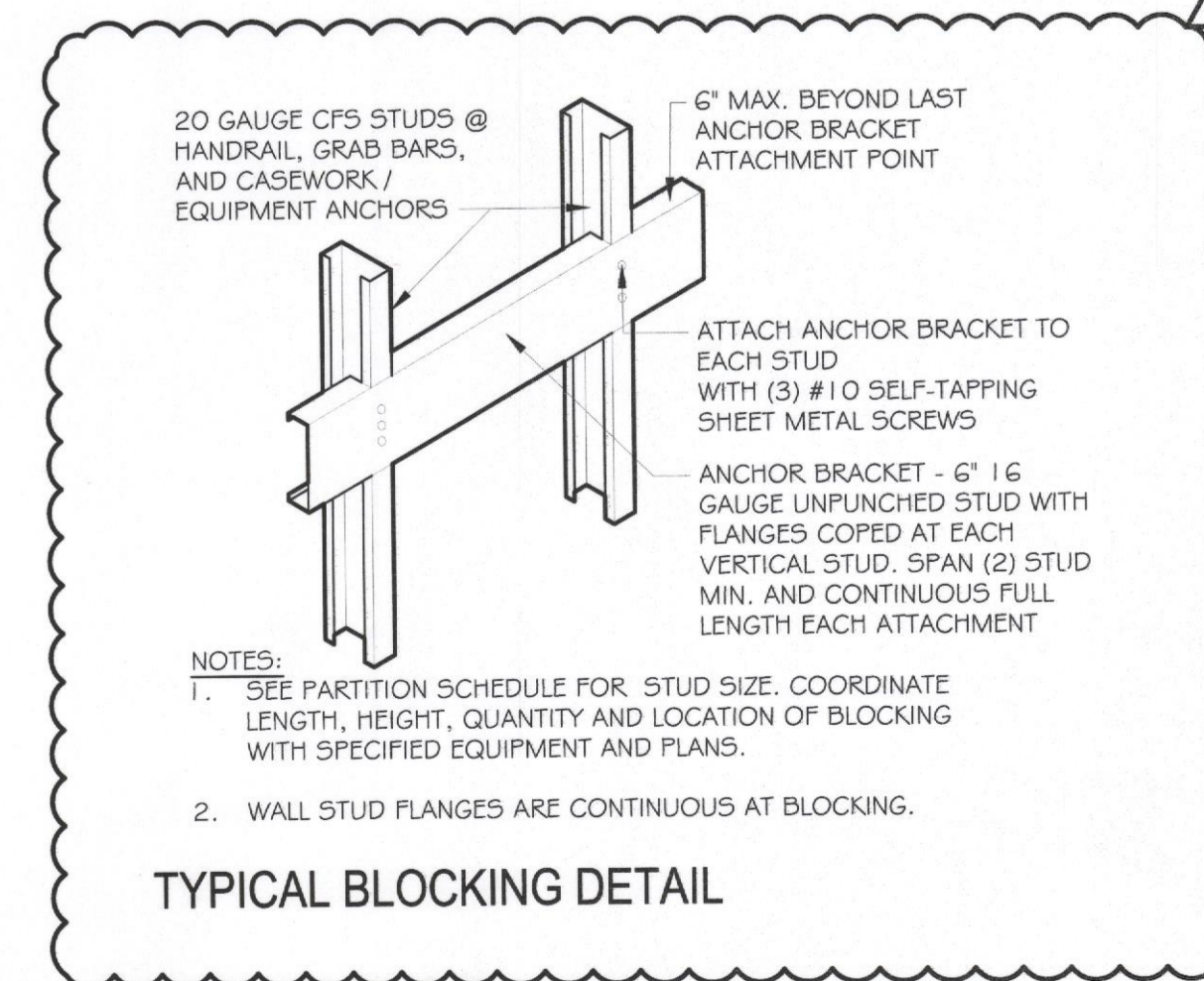
GWB AS MANUFACTURED BY USG "SHEETROCK" BRAND OR EQUAL 5/8" THICK UNLESS NOTED OTHERWISE FOR ALL ROOMS & AREAS SCHEDULED TO RECEIVE PAINT FINISH. ALL WALLS SHALL BE FINISHED TO LEVEL 4 IN ACCORDANCE W/CA 216-961 "RECOMMENDED LEVELS OF GYPSUM WALLBOARD FINISH".

WATER RESISTANT GWB AS MANUFACTURED BY USG "SHEETROCK" BRAND OR EQUAL 5/8" THICK UNLESS NOTED OTHERWISE FOR ALL WET AREAS AND AREAS TO RECEIVE WALL TILE FINISH INCLUDING:

2. INSULATION:
FURNISH AND INSTALL INSULATION WITHIN THE SCHEDULED PARTITIONS AS INDICATED BELOW UNLESS OTHERWISE NOTED ELSEWHERE WITHIN THE CONTRACT DOCUMENTS.

SOUND ATTENUATION BATT AS MANUFACTURED BY OWINGS CORNING "SOUND ATTENUATION BATTS FIBERGLASS" 3 1/2" THICK, UNFACED, OR EQUAL. REFERENCE FLOOR PLANS AND BUILDING SECTIONS FOR ROOMS AND AREAS TO RECEIVE 3" S.A.B.B.

3. BLOCKING:
BLOCKING SHALL BE PROVIDED PER TYPICAL BLOCKING DETAIL. SEE BLOCKING PLAN A-101A, EQ-101, MILLWORK AND INTERIOR ELEVATIONS FOR BLOCKING LOCATIONS.



NOTES:
1. SEE PARTITION SCHEDULE FOR STUD SIZE, COORDINATE LENGTH, HEIGHT, QUANTITY AND LOCATION OF BLOCKING WITH SPECIFIED EQUIPMENT AND PLANS.
2. WALL STUD FLANGES ARE CONTINUOUS AT BLOCKING.

TYPICAL BLOCKING DETAIL

REV. #	ISSUE / DESCRIPTION	DATE
1	OWNER COMMENTS	5/10/2017

SHEET TITLE	
INTERIOR PARTITIONS	
DRAWING DATE:	01 APRIL 2017
DRAWN BY:	STAFF
REVIEWED BY:	SDL
PROJECT #	15.107
SHEET #	A-402
FILE NAME:	15.107 - A-401.dwg